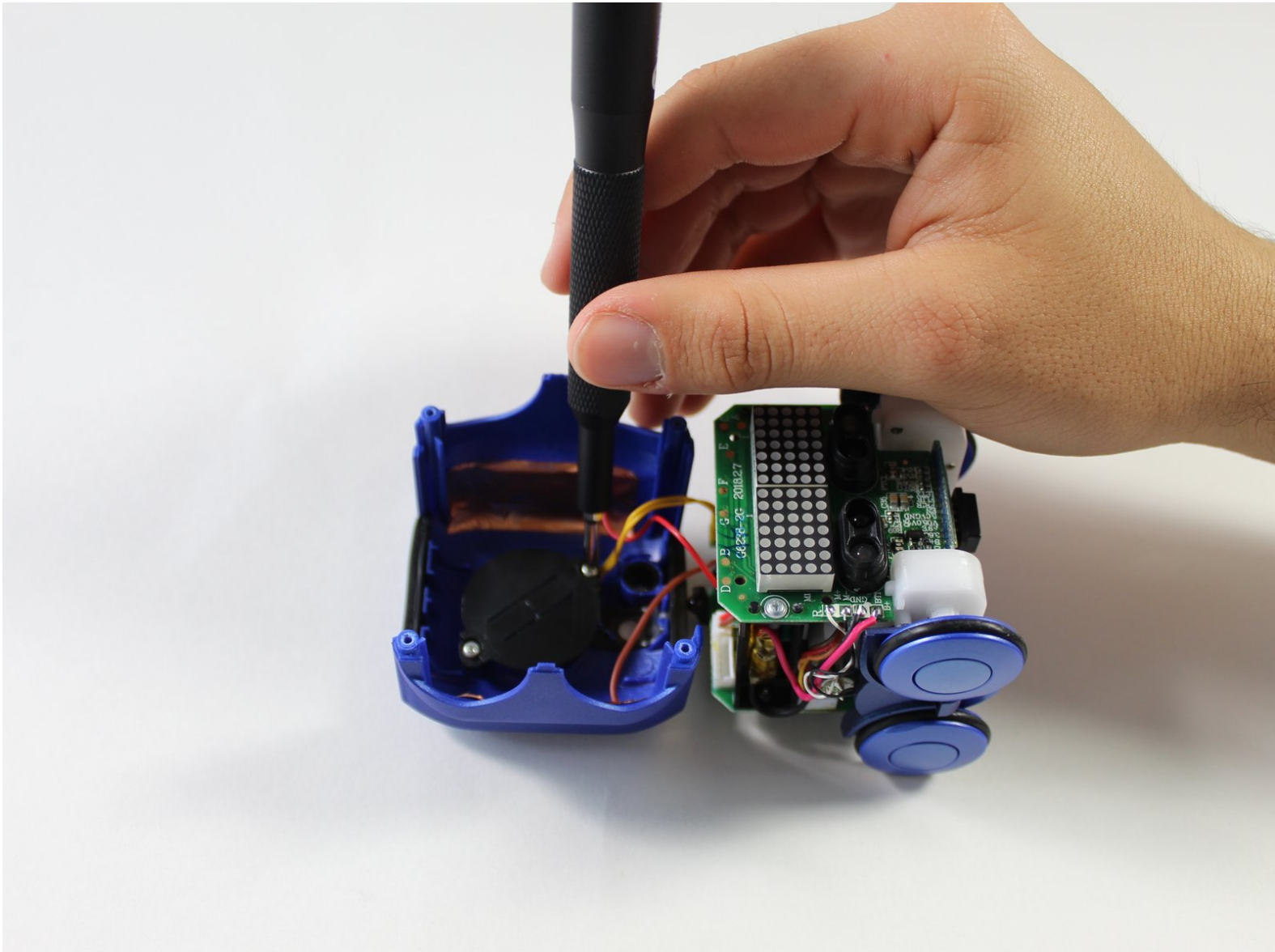




Spin Master Boxer Robot Speaker Replacement

If the Spin Master Boxer is not making any noises, follow this guide to replace speaker.

Written By: Lauren Roide



INTRODUCTION

If Spin Master Boxer is not making any noises, follow this guide to replace speaker. The speaker is located inside of robot, and requires a Size 00 Philips Screwdriver to complete replacement, and requires soldering to remove the speaker.



TOOLS:

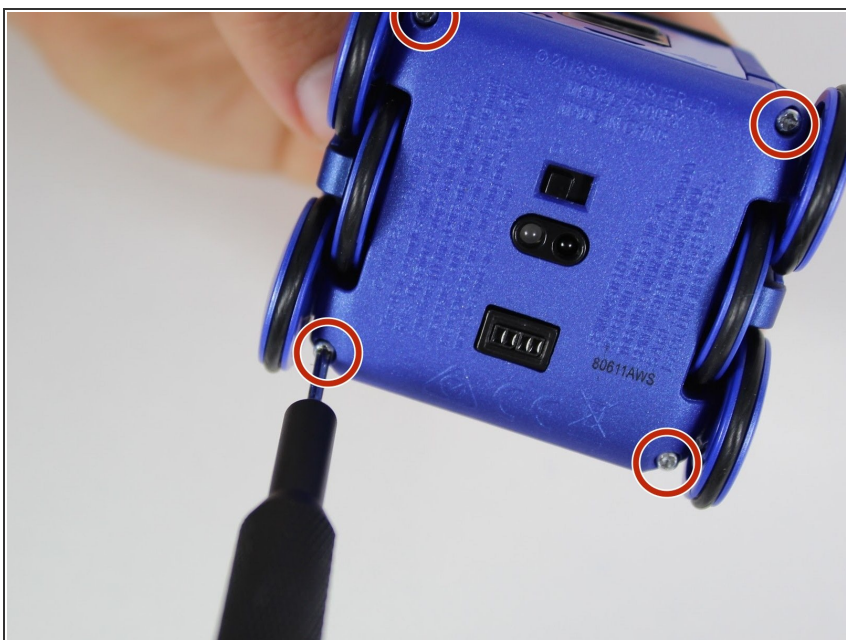
- [Phillips #00 Screwdriver](#) (1)
-

Step 1 — Robot Screen



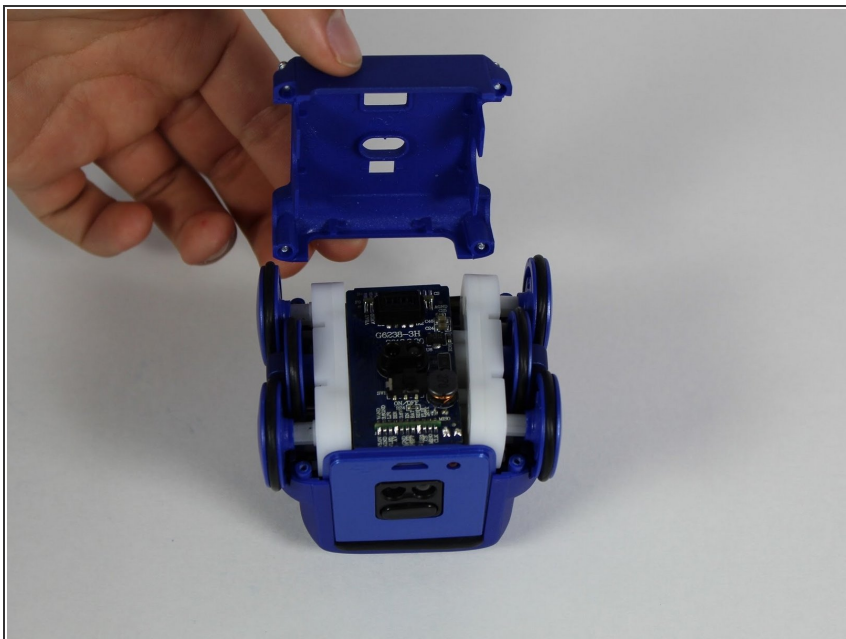
- Set Spin Master Boxer on your workspace so that the bottom panel faces upwards.

Step 2



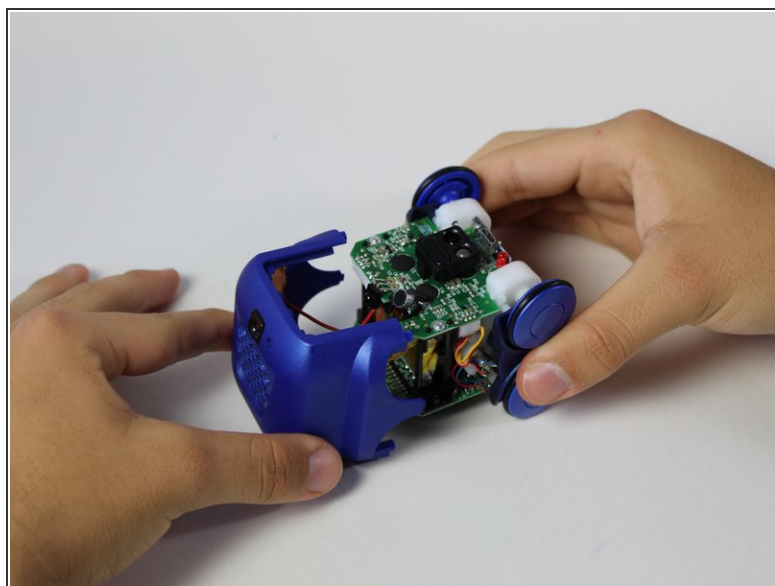
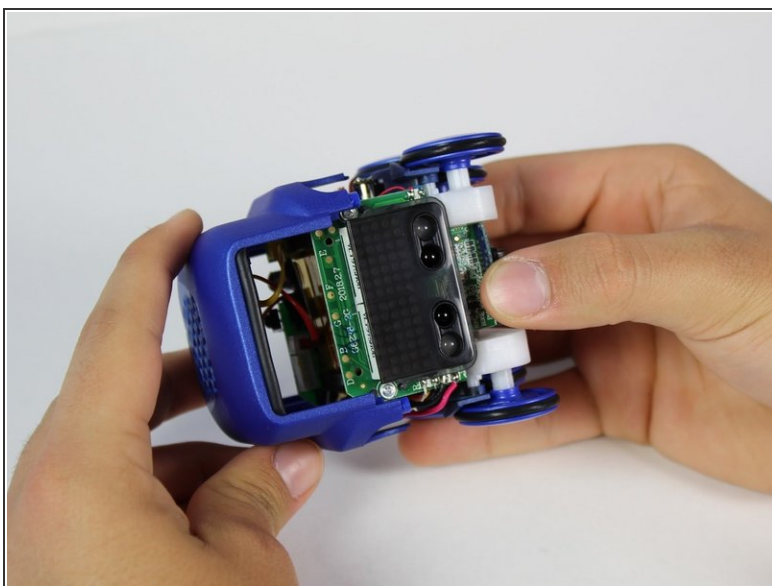
- Using a Phillips #00 screw driver, unscrew the four 4mm screws in each corner of the bottom panel.

Step 3



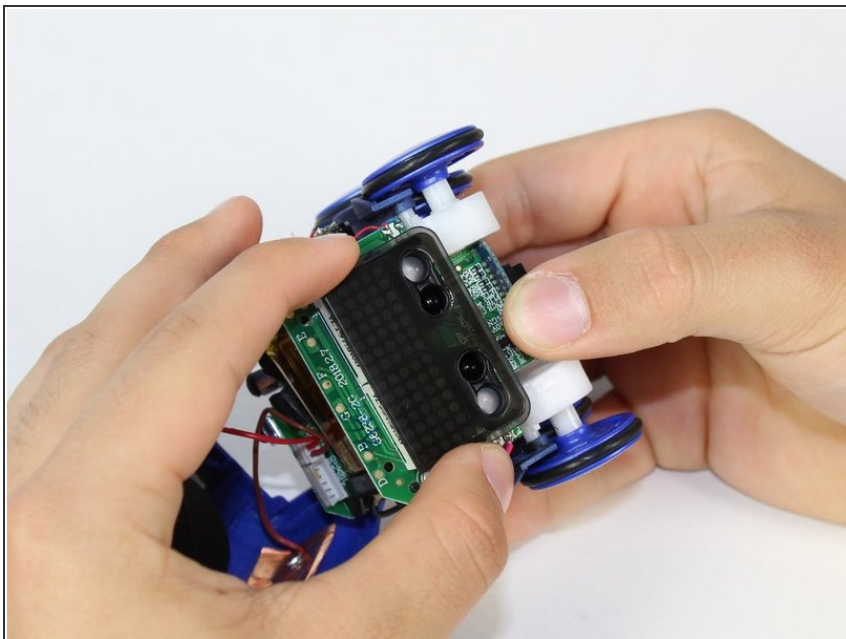
- Carefully remove the bottom panel of the Spin Master Boxer by lifting up, away from the main body of robot.

Step 4



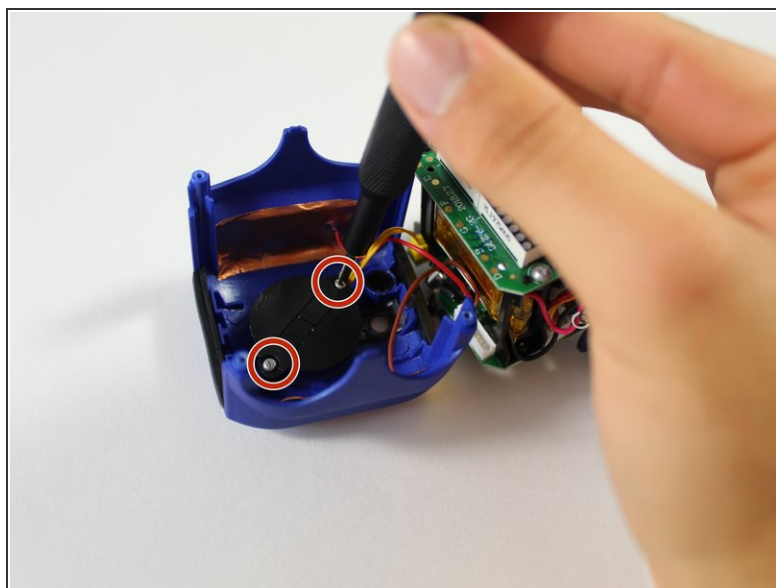
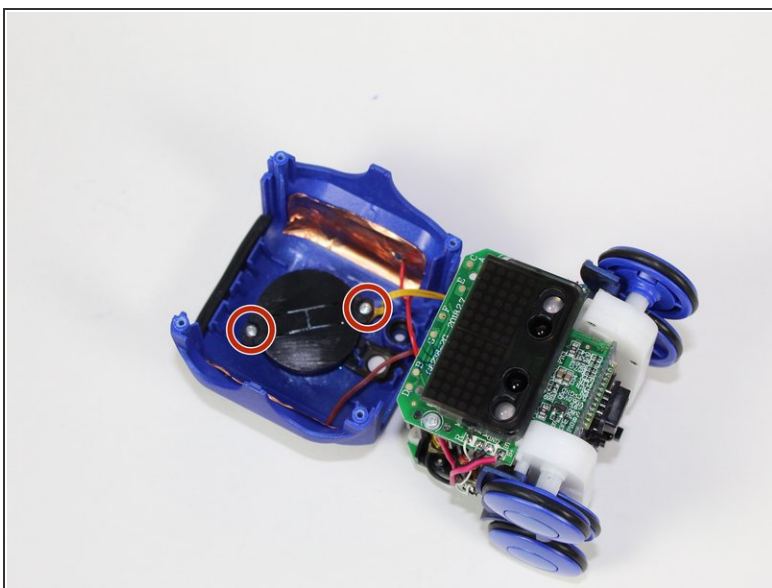
- While holding onto the axels of the wheels, gently pull the top panel of the robot away from its body.
- ⓘ Be aware when removing the panel that multiple wires connect it to the body of the Spin Master Boxer.

Step 5



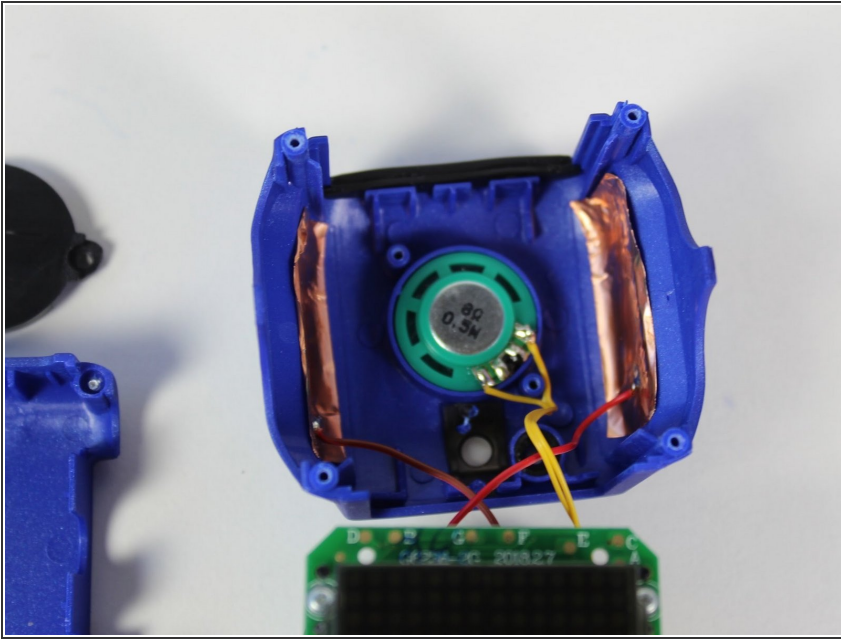
- Remove the plastic screen from the body of the robot. It should come off easily as it is not attached by anything.

Step 6 — Robot Speaker



- Using a Phillips #00 screwdriver, unscrew the two 3mm screws connecting the black speaker cover to the top panel.

Step 7



- Remove the speaker cover and you will be left looking at the speaker.
- ⓘ The speaker is soldered onto the top panel so additional measures must be taken to completely remove it. See [How To Solder and Desolder Connections](#)

To reassemble your device, follow these instructions in reverse order.