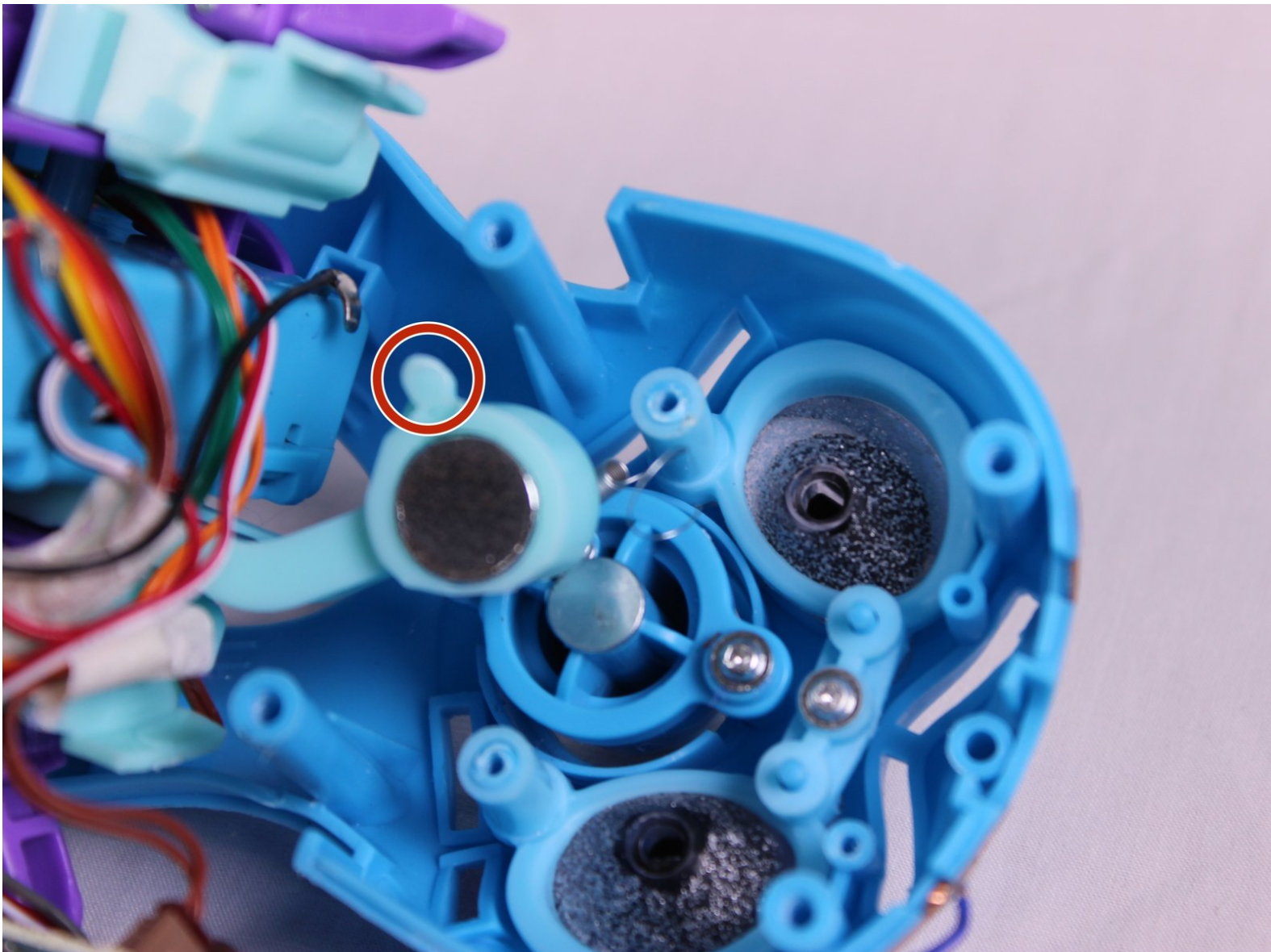




Spin Master Hatchimal Draggie Nose Replacement

In this guide the spring that makes the nose automatically pop out is the assembly piece that will be replaced.

Written By: Hector Lopez



INTRODUCTION

This guide will demonstrate how to properly replace the nose spring for the Hatchimal Draggie. The nose spring can be accessed by first removing the wings and fur .

TOOLS:

- [iFixit Opening Tools](#) (1)
 - [Utility Scissors](#) (1)
 - [Spudger](#) (1)
 - [iFixit Angled Tweezers](#) (1)
 - [Phillips #00 Screwdriver](#) (1)
-

Step 1 — Plastic Wing Replacement



- lay the Hatchimal on its side.

Step 2



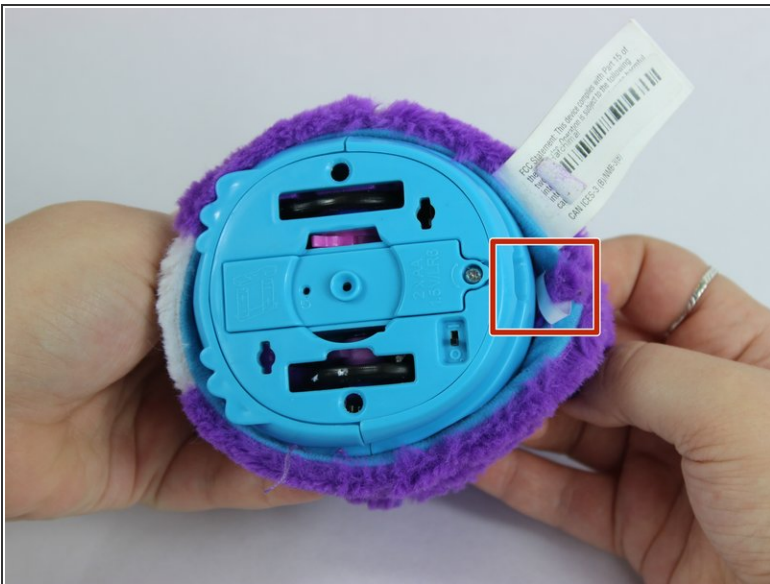
- Using the plastic opening tool, push in on the purple clip.

Step 3



- Pull the wing off of the hatchimal.
- ⓘ The wing should come off with little resistance.

Step 4 — Fur Replacement



- Cut the fur retaining zip-tie with a pair of scissors.

Step 5



- Lift the fur up until it can't go further.

Step 6



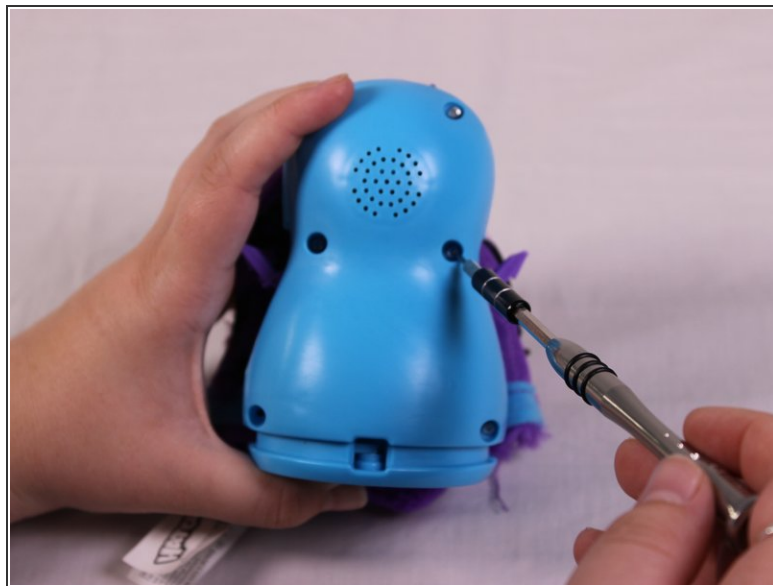
- Use the spudger tool to push up on the black clip to free it.
- Pull the clip out.

Step 7



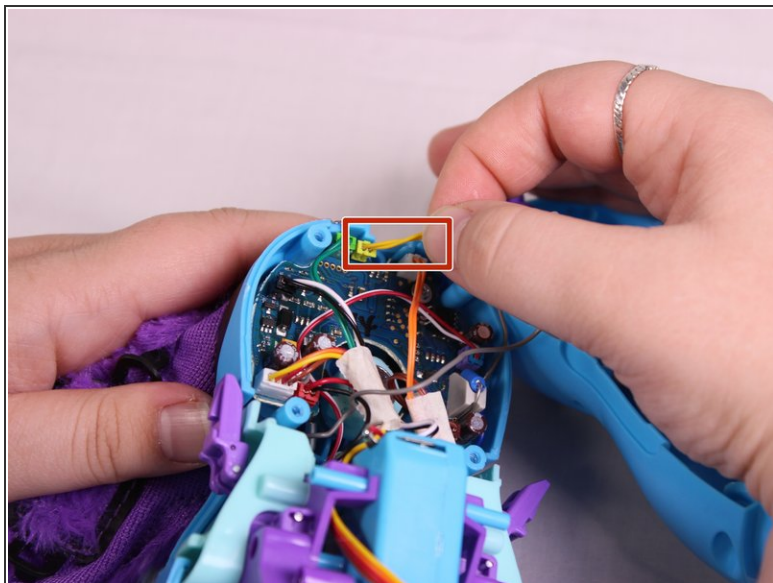
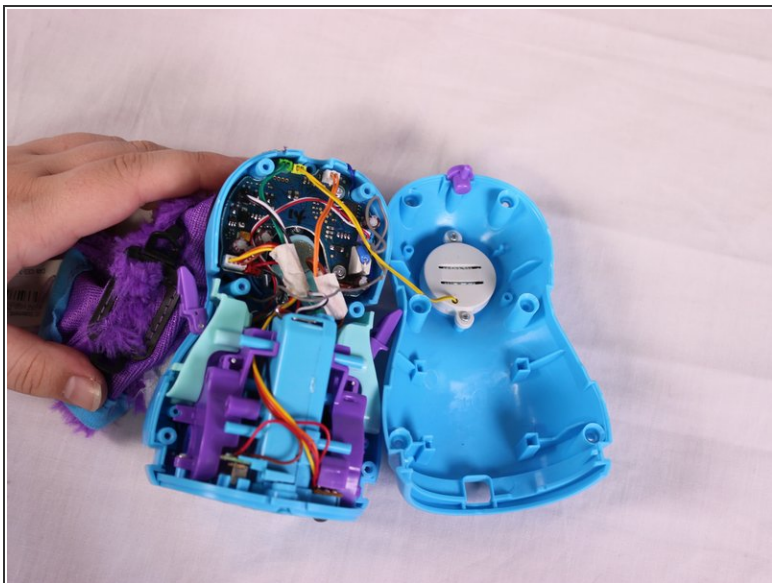
- Lift fur up to reveal the next set of clips.
- Insert a spudger to push up on the black clip to free it.
- Pull out the clip.

Step 8



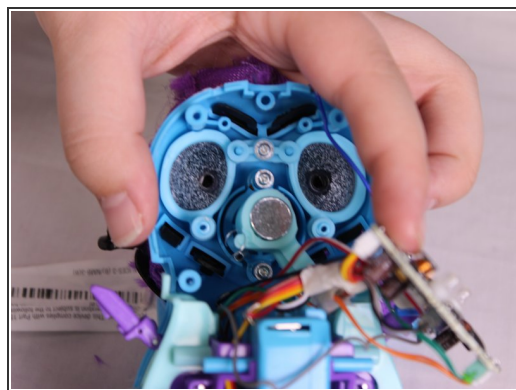
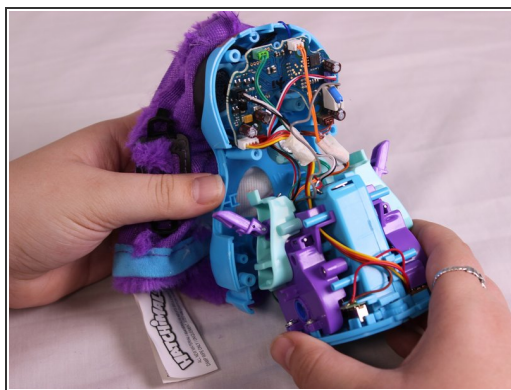
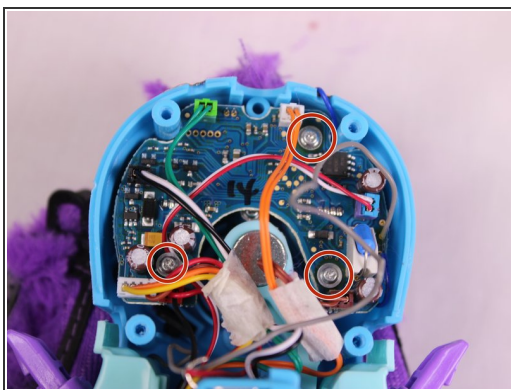
- Lift the fur up and over the Hatchimals Head.
- Remove the six 12mm Phillips #00 screws from then body.

Step 9



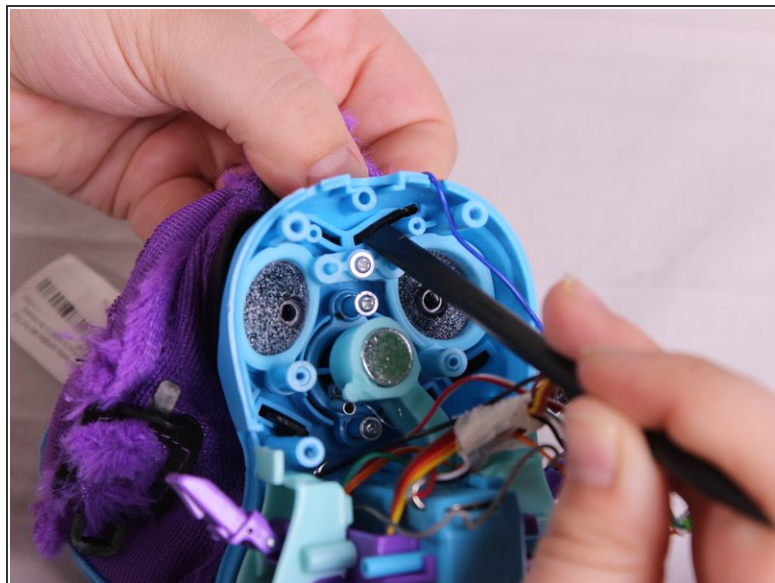
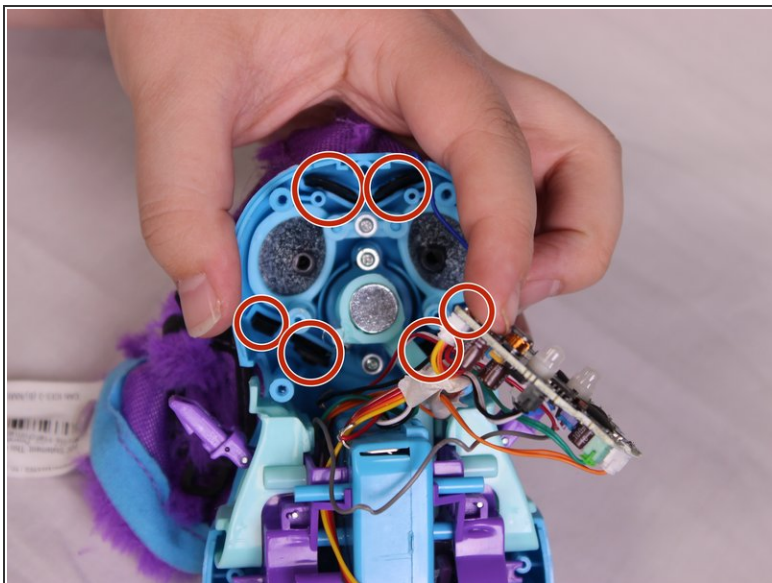
- Pull the casing apart.
- Remove the yellow speaker cable.

Step 10



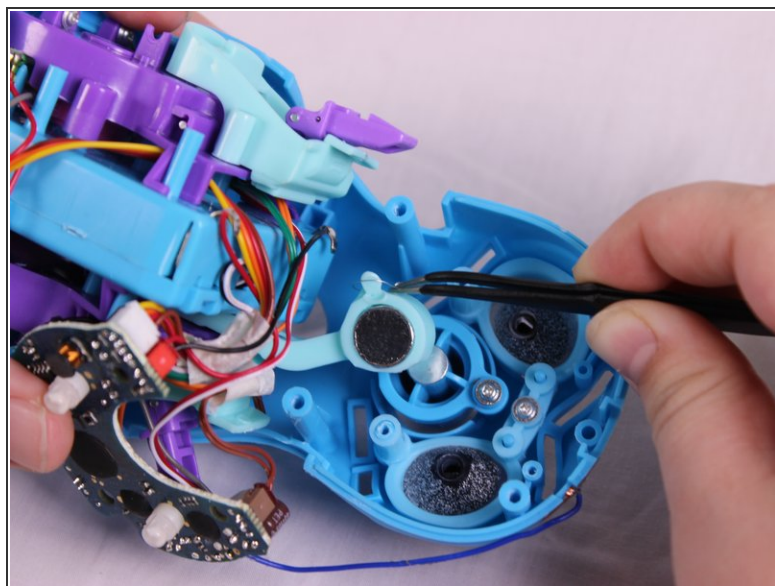
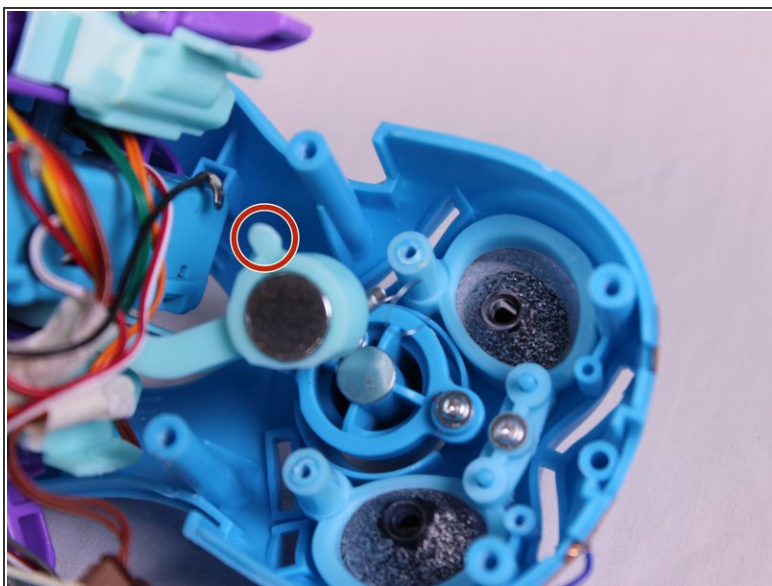
- Remove the three 7mm Phillips #00 screws from the head.
- Remove the wheel base and the circuit board carefully not to damage the spring.

Step 11



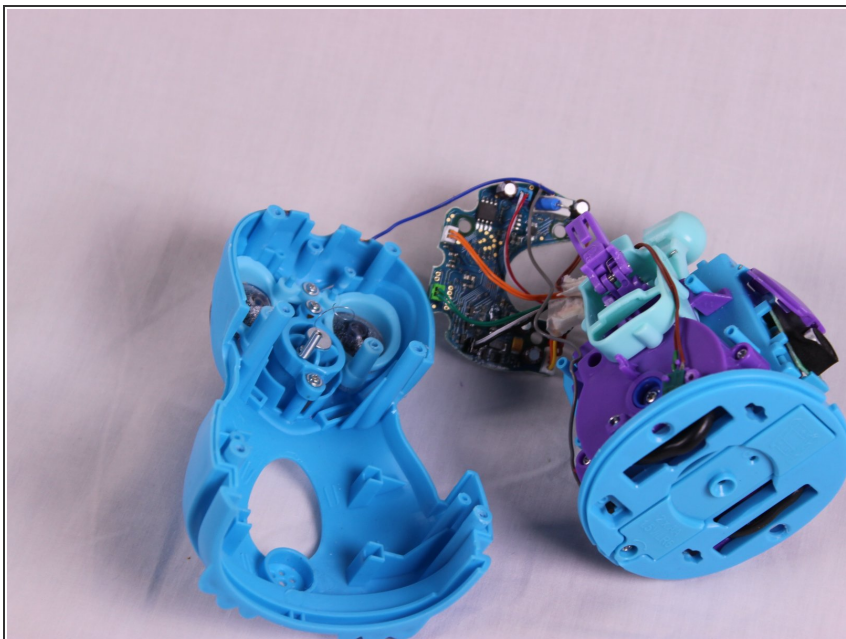
- Push the six black fur clips out using the spudger.
- Remove the fur completely.

Step 12 — Nose Spring Replacement



- Using the angled tweezers tool, disconnect the spring that is attached to the nose from the lever.

Step 13



- Separate the body casing from the core and circuit board.

⚠ Don't damage the small wire connected from the top of the head to the circuit board.

Step 14



- Remove a single 7mm Phillips #00 screw from the break.
- Remove the spring.

To reassemble your device, follow these instructions in reverse order.