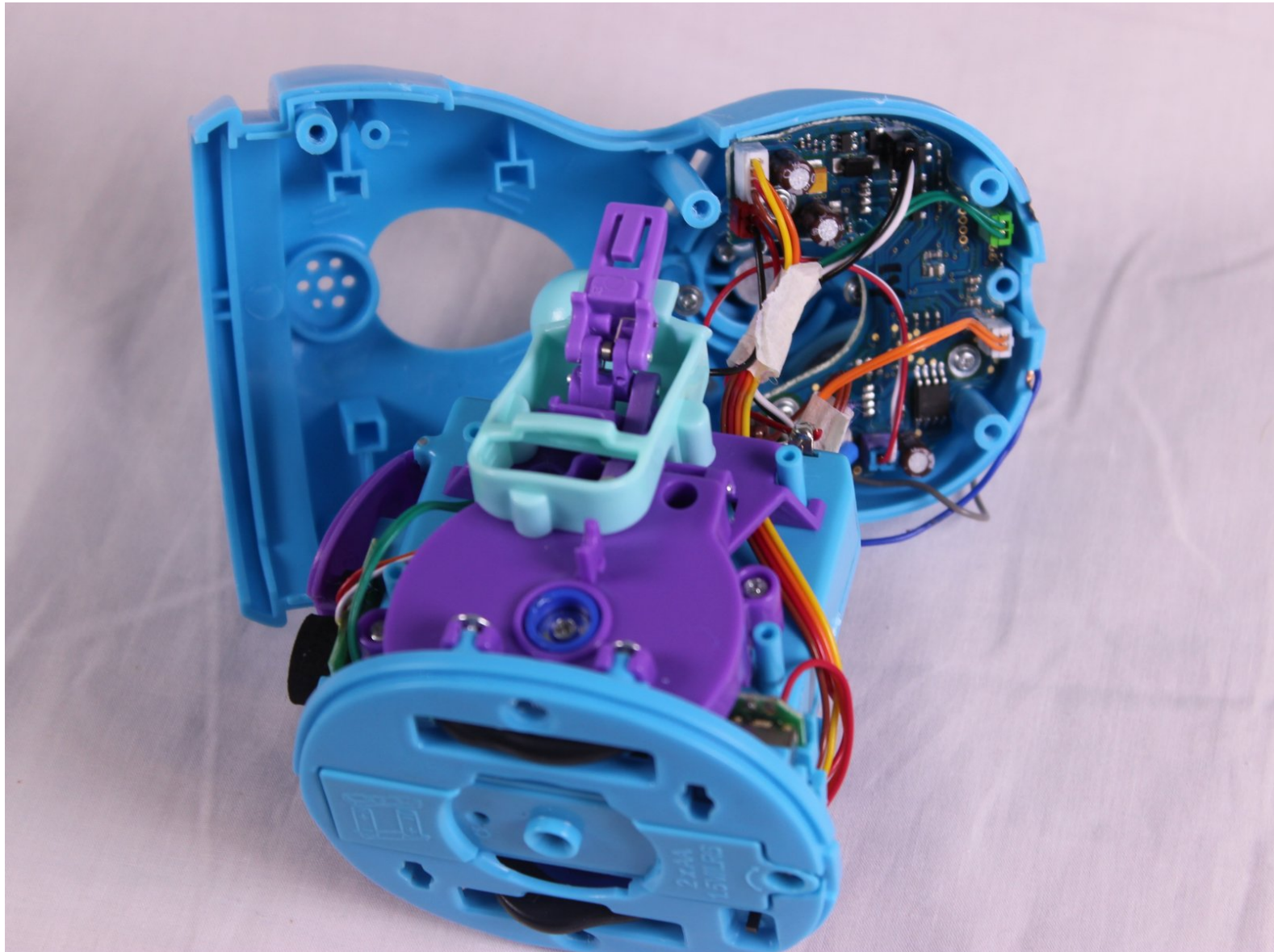




Spin Master Hatchimal Draggie Wheels Replacement

This guide will explain how to replace a wheel on the Spin Master Hatchimal Draggie.

Written By: Humaid Alhajri



INTRODUCTION

Sometimes rough play can cause the wheel to break or not spin anymore. This guide will show you how to remove the wheel.



TOOLS:

- [Phillips #00 Screwdriver](#) (1)
 - [Utility Scissors](#) (1)
 - [Spudger](#) (1)
 - [iFixit Opening Tools](#) (1)
-

Step 1 — Plastic Wing Replacement



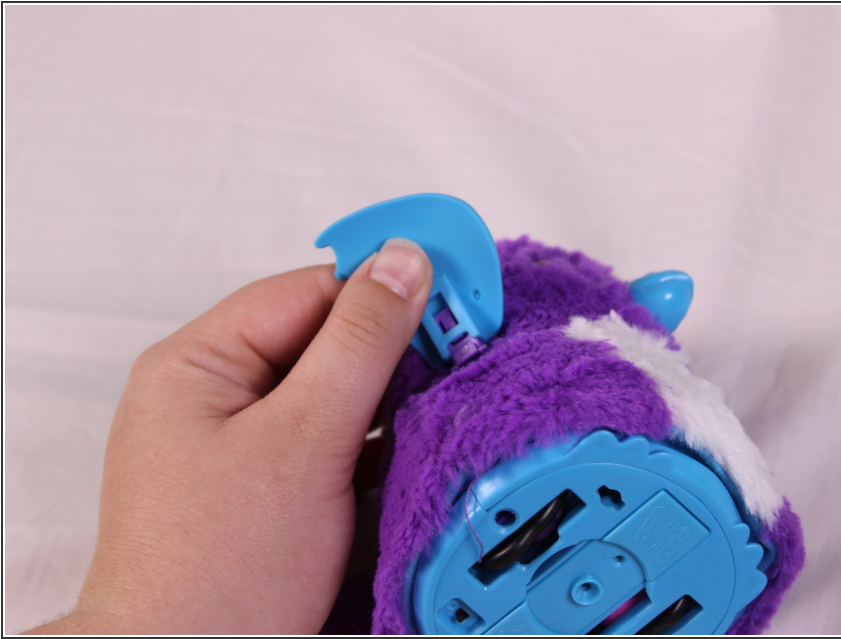
- lay the Hatchimal on its side.

Step 2



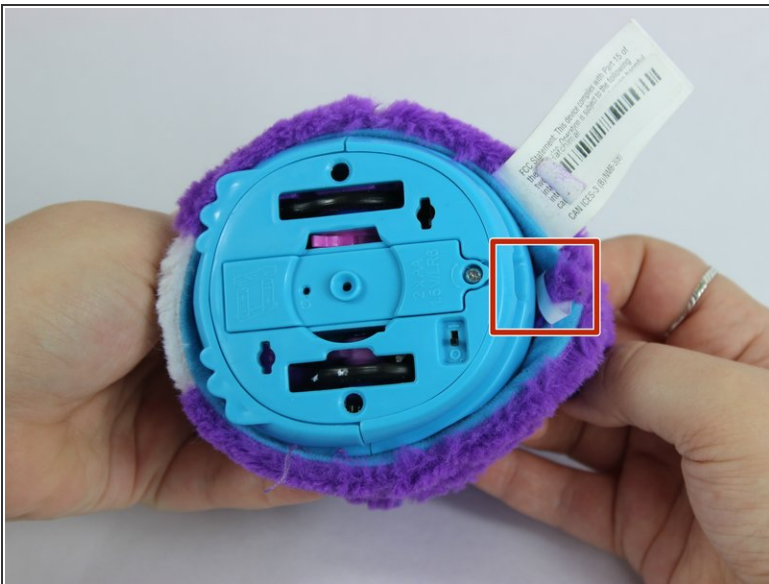
- Using the plastic opening tool, push in on the purple clip.

Step 3



- Pull the wing off of the hatchimal.
- ⓘ The wing should come off with little resistance.

Step 4 — Fur Replacement



- Cut the fur retaining zip-tie with a pair of scissors.

Step 5



- Lift the fur up until it can't go further.

Step 6



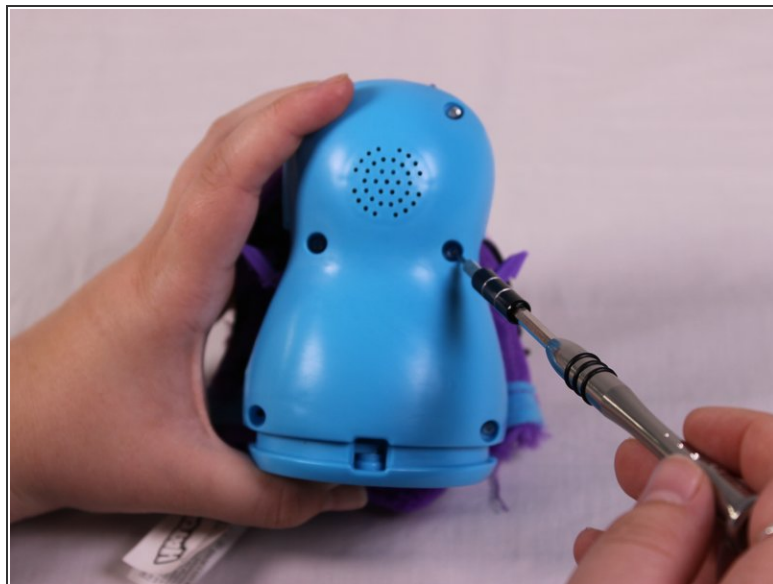
- Use the spudger tool to push up on the black clip to free it.
- Pull the clip out.

Step 7



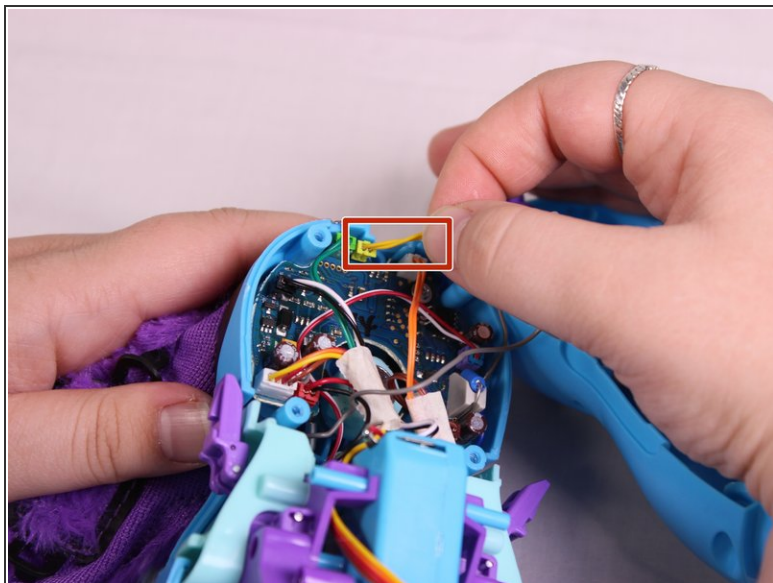
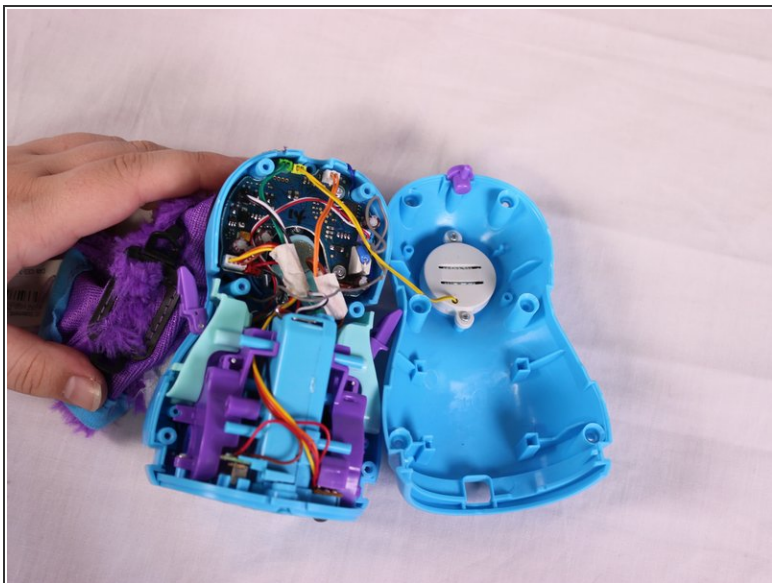
- Lift fur up to reveal the next set of clips.
- Insert a spudger to push up on the black clip to free it.
- Pull out the clip.

Step 8



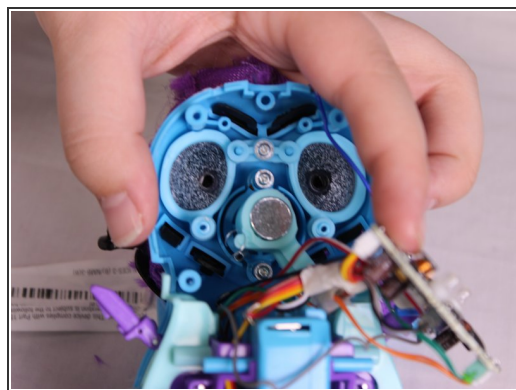
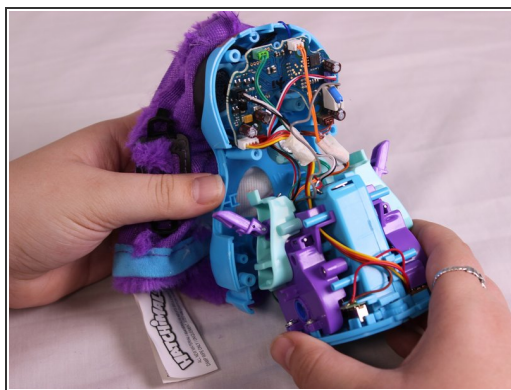
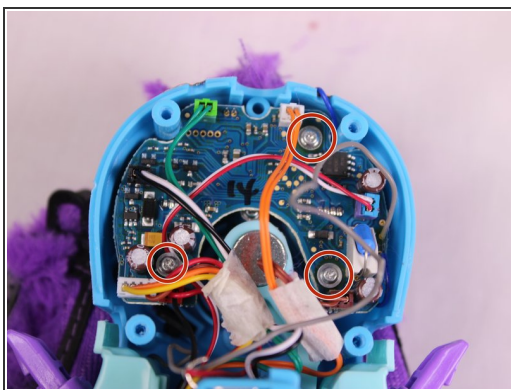
- Lift the fur up and over the Hatchimals Head.
- Remove the six 12mm Phillips #00 screws from then body.

Step 9



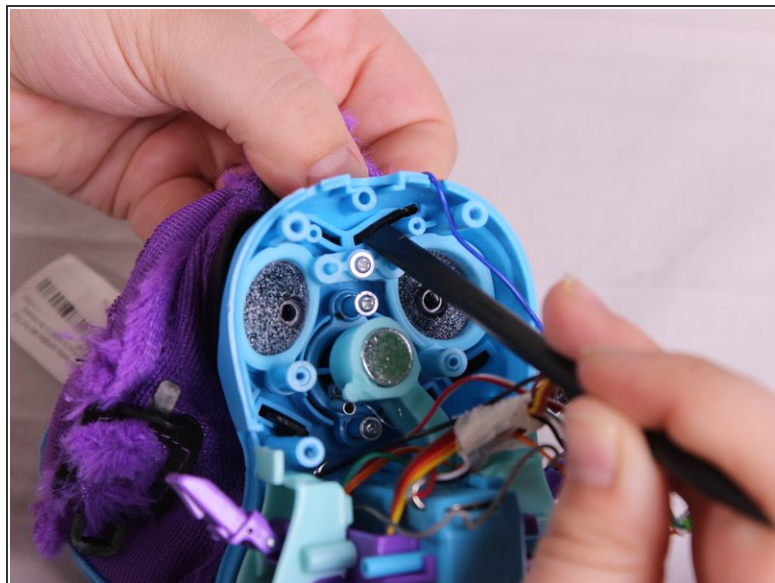
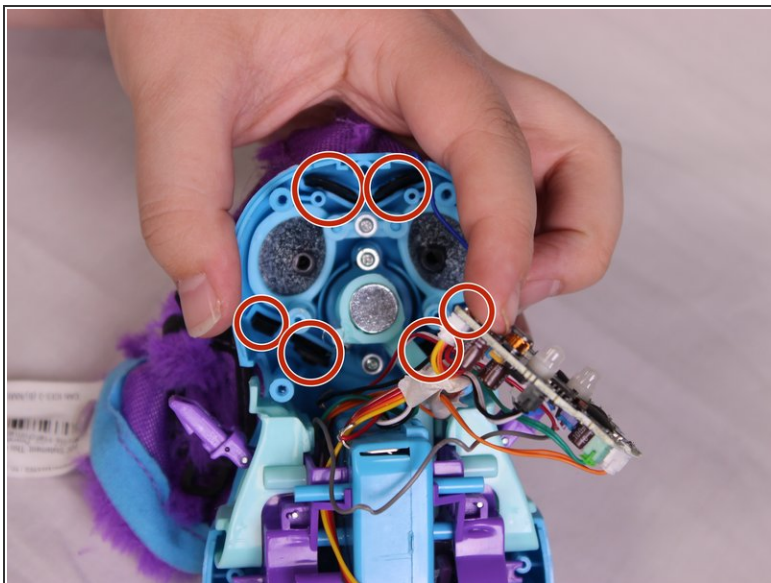
- Pull the casing apart.
- Remove the yellow speaker cable.

Step 10



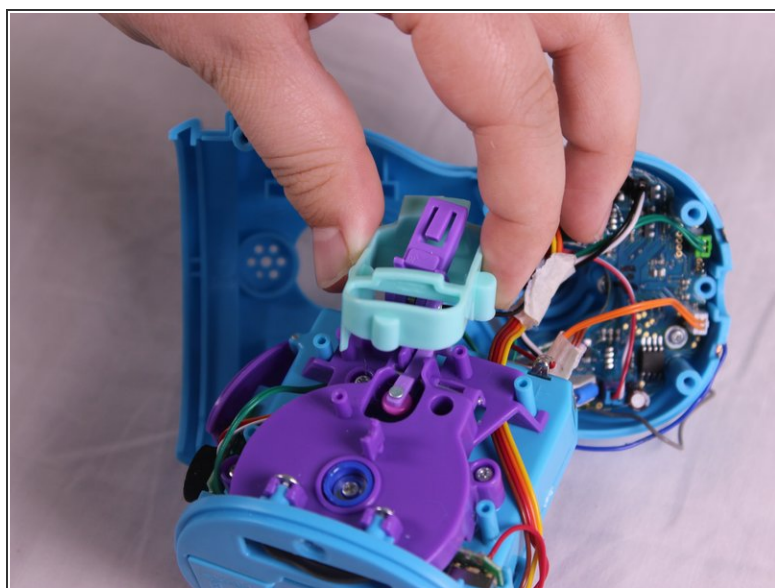
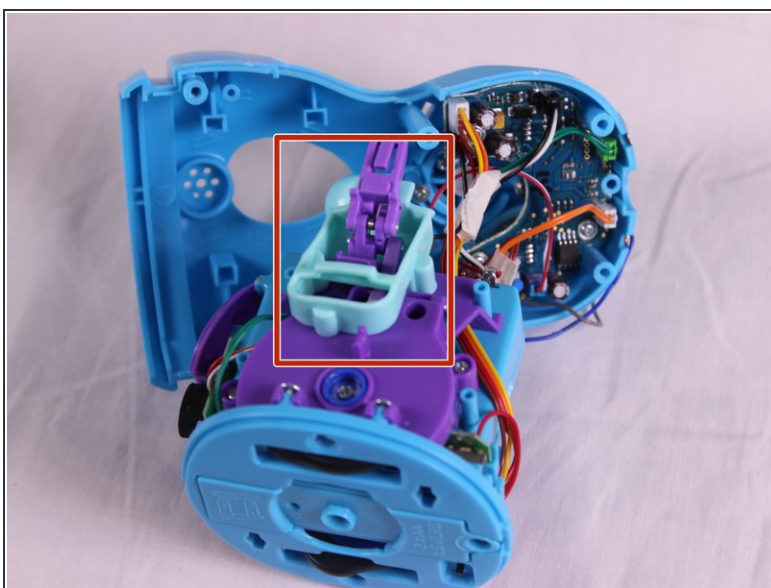
- Remove the three 7mm Phillips #00 screws from the head.
- Remove the wheel base and the circuit board carefully not to damage the spring.

Step 11



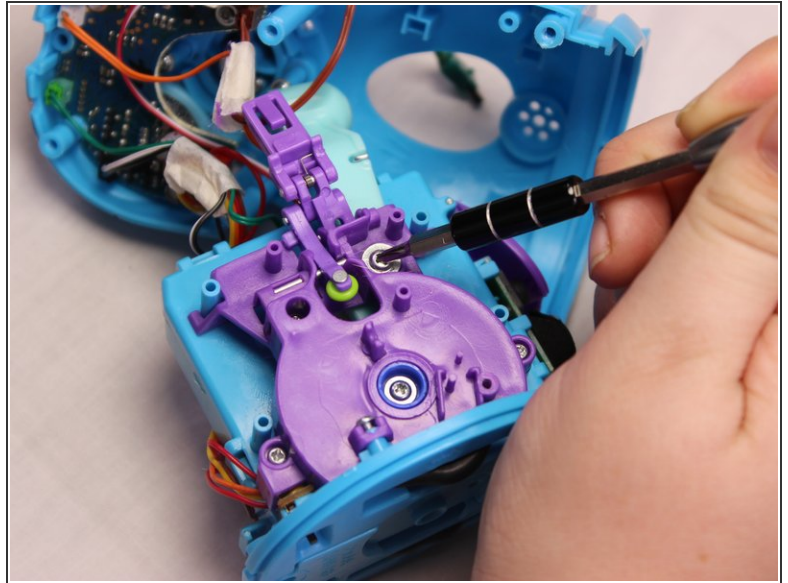
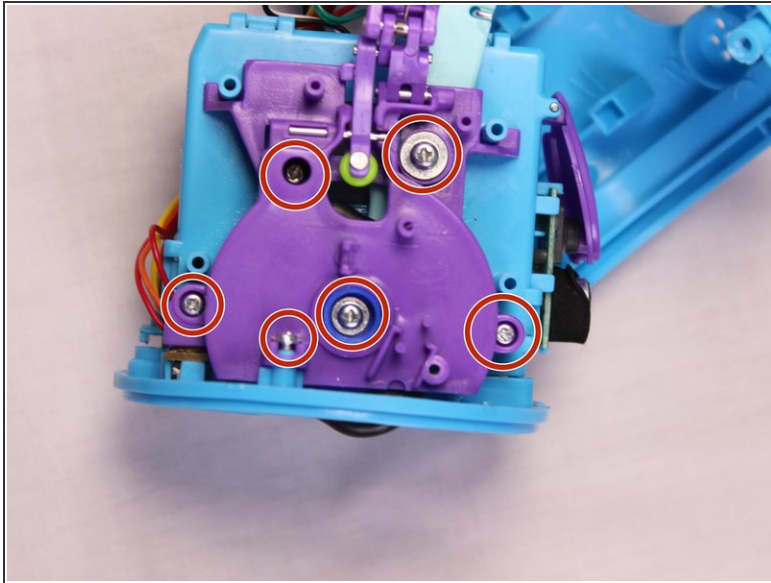
- Push the six black fur clips out using the spudger.
- Remove the fur completely.

Step 12 — Wheel Replacement



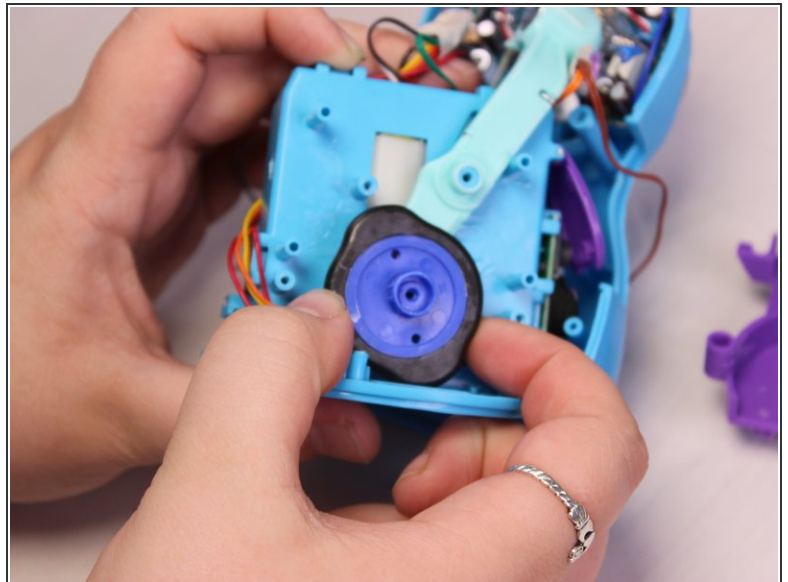
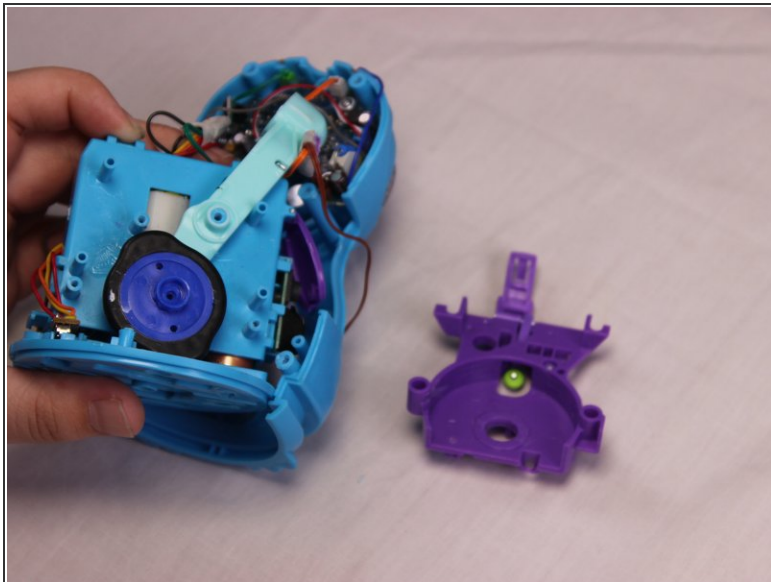
- Lift up and remove the light blue plastic casing.

Step 13



- Remove the six 7mm Phillips #00 screws.

Step 14



- Remove the purple plastic casing. It should come off with little resistance.
- Remove the wheel.

To reassemble your device, follow these instructions in reverse order.