



Sprint Airave SCS-26UC2 Teardown

Teardown of the Samsung Airave for Sprint.

Written By: Erik Leonard



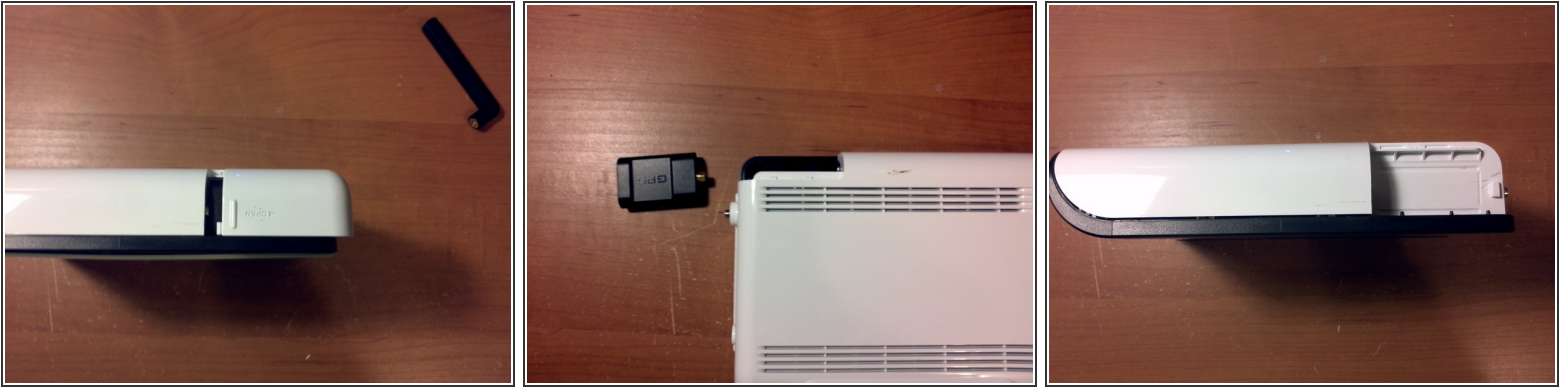
INTRODUCTION

This guide will walk you through the steps to completely disassemble a Sprint Airave.

TOOLS:

- [iFixit Opening Tools](#) (1)
 - [Phillips #00 Screwdriver](#) (1)
 - [Socket 8mm](#) (1)
-

Step 1 — Sprint Airave SCS-26UC2 Teardown



- Remove the external antenna, GPS cover, and GPS module.

Step 2



- Use a pry tool to remove the white outer cover. Pry towards the front of the device. Continue prying down the length of the cover until it pops off.

Step 3



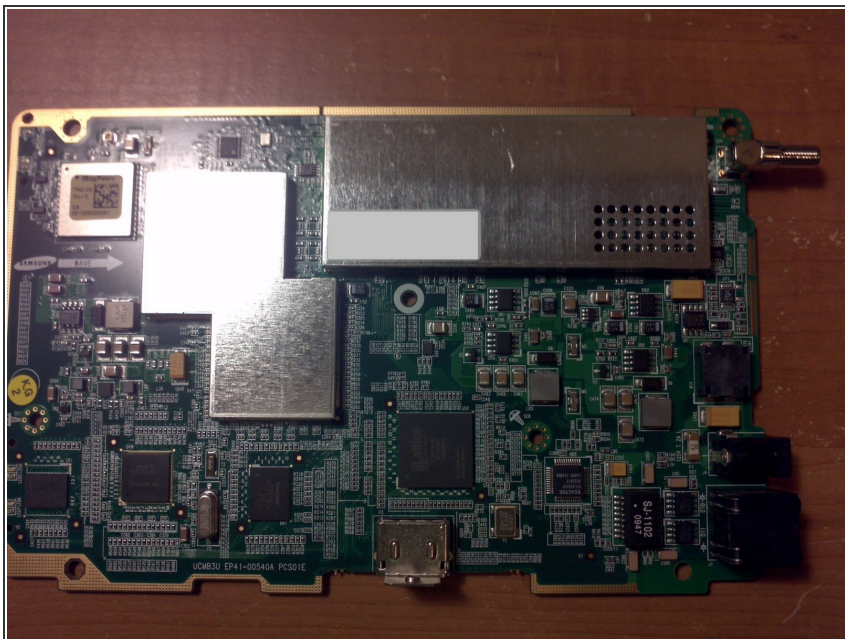
- Locate and remove the four Phillips screws

Step 4



- With the cover removed you now have access to the circuit board.

Step 5



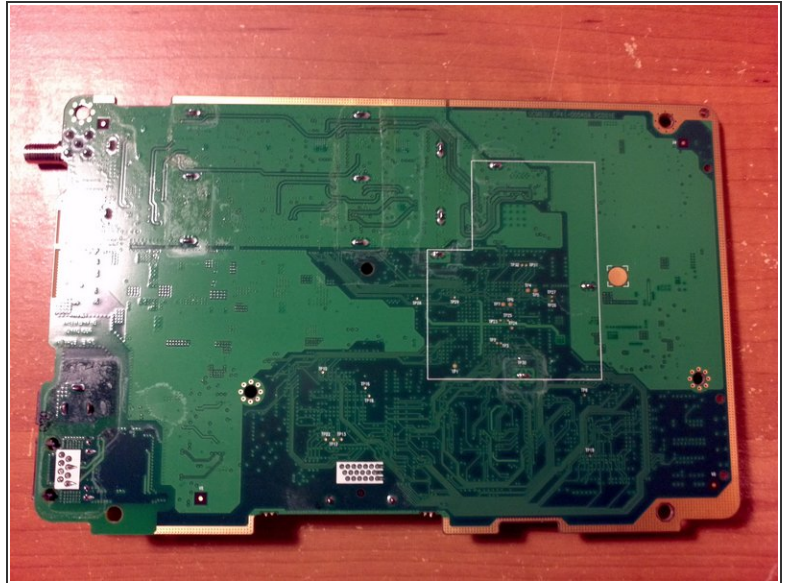
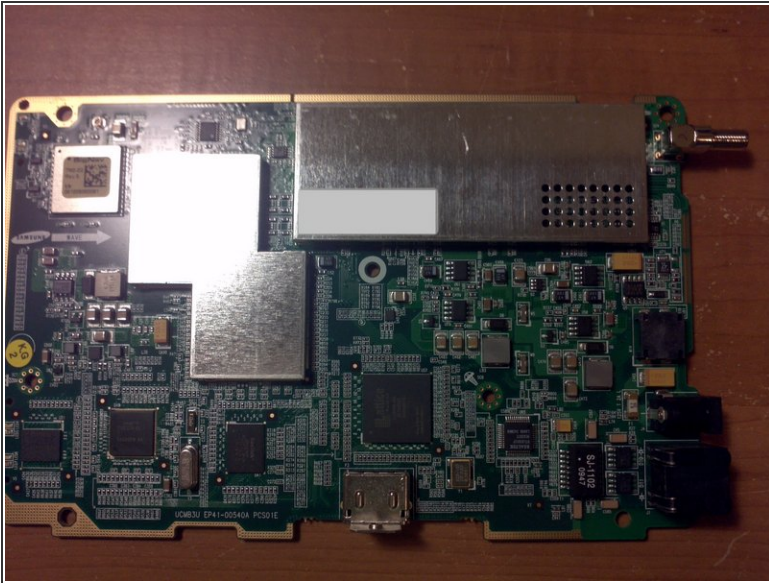
- Using an 8mm socket you can remove the antenna pigtail.

Step 6



- Release the clip indicate to remove the circuit board.

Step 7



- Here is the circuit board fully removed.

To reassemble your device, follow these instructions in reverse order.