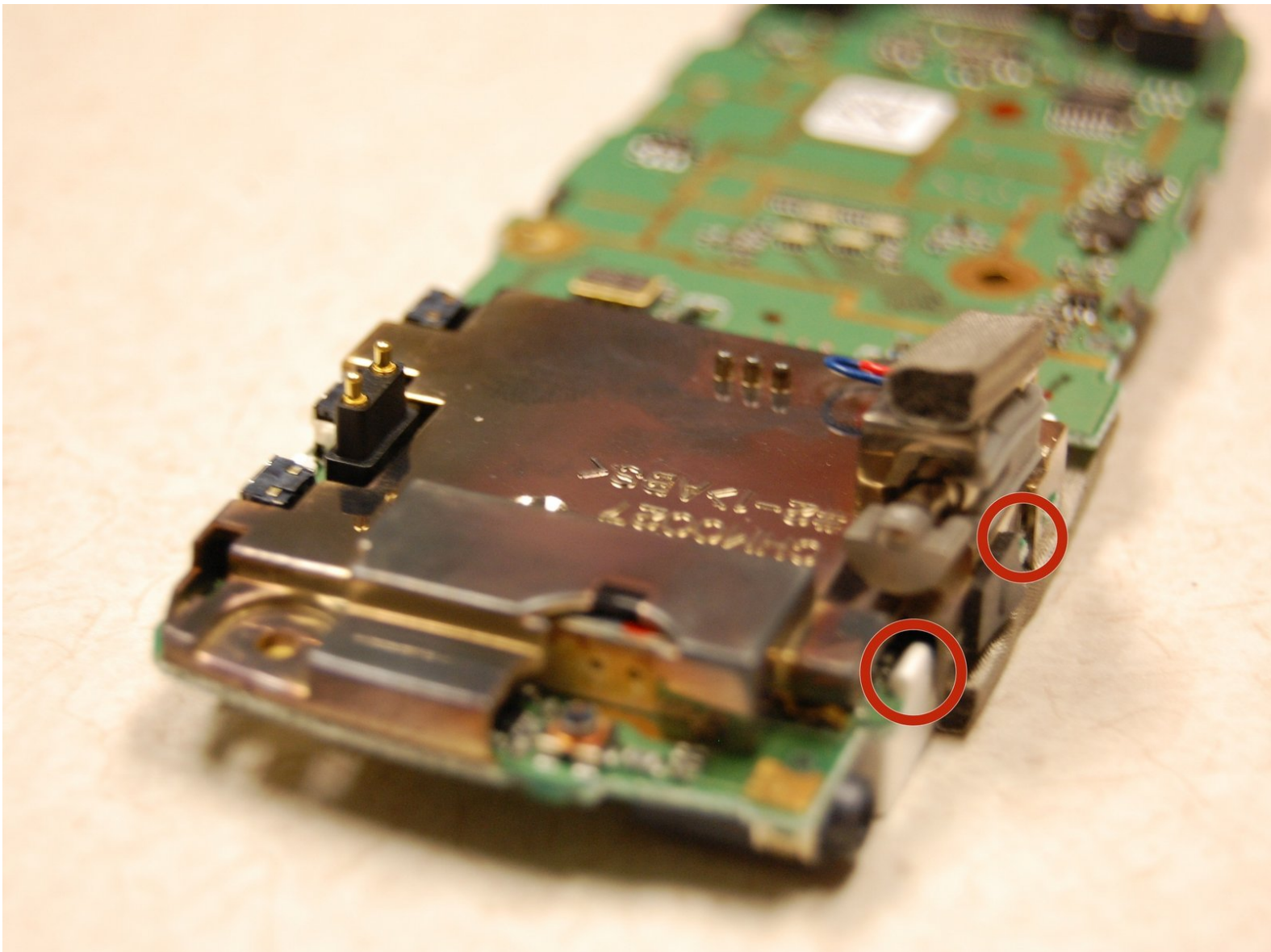




Sprint Sanyo RL-4920 Display Replacement

This guide will show you how to replace the screen on the Sprint Sanyo RL-4920.

Written By: Patrick Olmstead



 **TOOLS:**

- [64 Bit Driver Kit](#) (1)
 - [iFixit Opening Tools](#) (1)
-

Step 1 — Back of Phone



- Flip the phone over so that the screen is facing down.

Step 2 — Remove Battery Pack



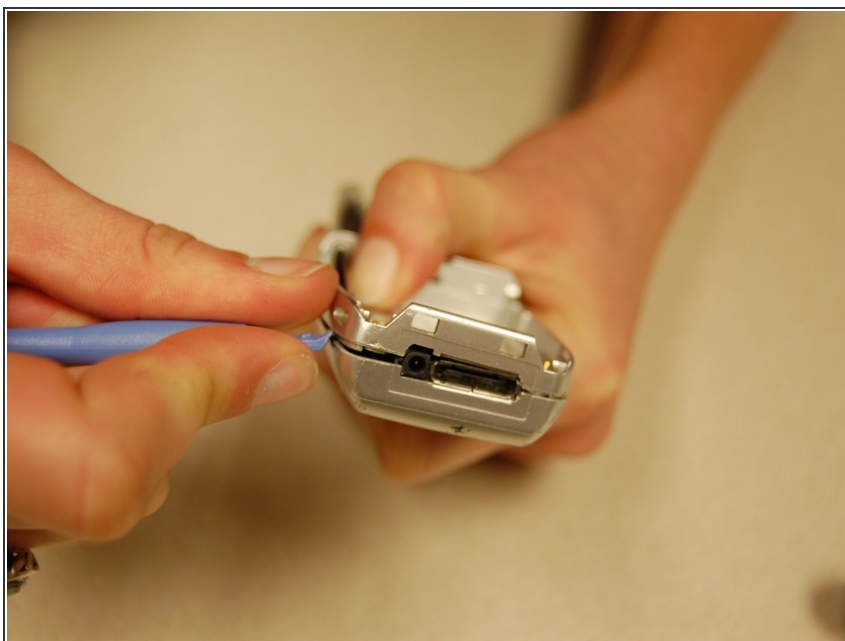
- Push the gray lever up towards the top of the phone.
- Pull up on the battery pack and completely separate it from the phone.

Step 3 — Screws



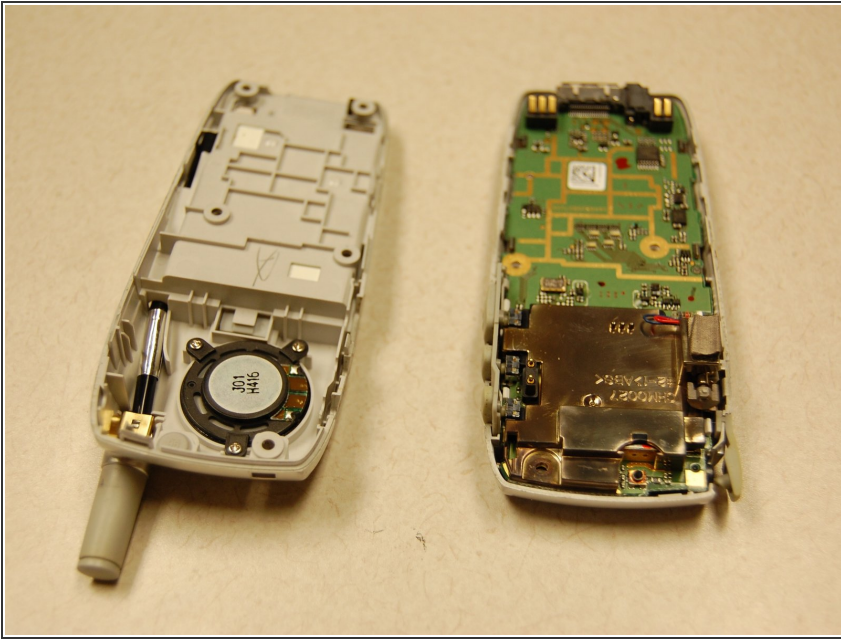
- Locate the five screws around the back casing.
- Use a three-prong screw bit to remove all five screws.

Step 4 — Separate Cases



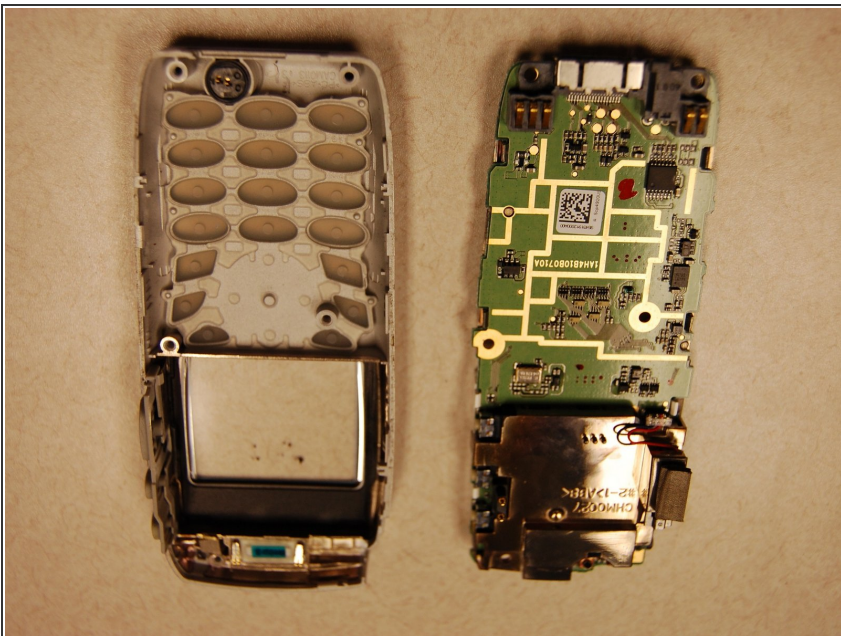
- Use the plastic opening tool and slide it around the phone to pull apart the front and back casing.

Step 5 — Separate Cases



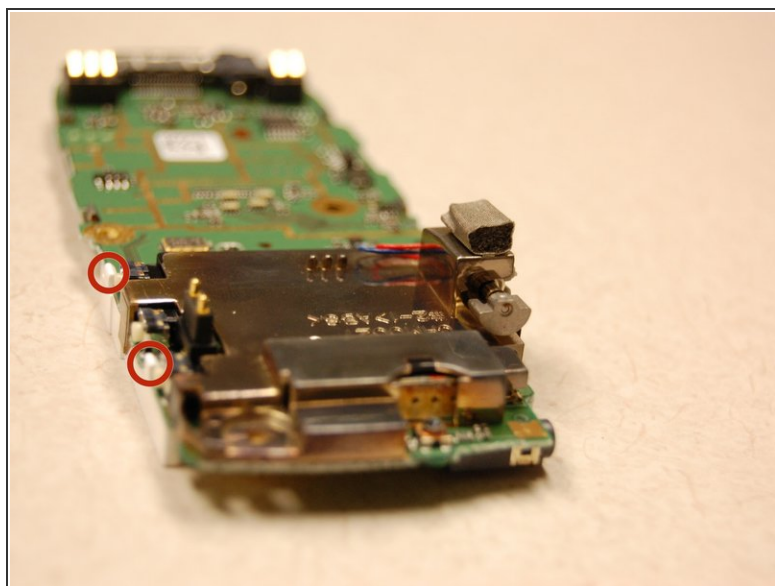
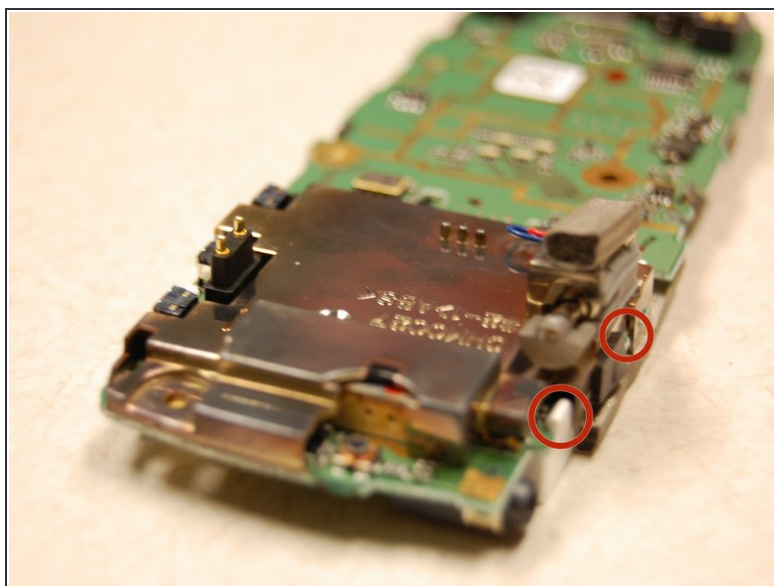
- Separate the two cases.

Step 6 — The Front Case



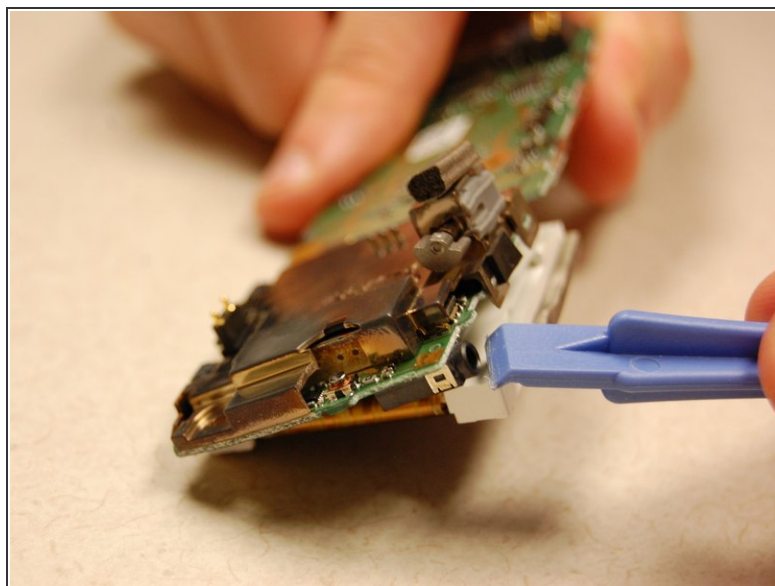
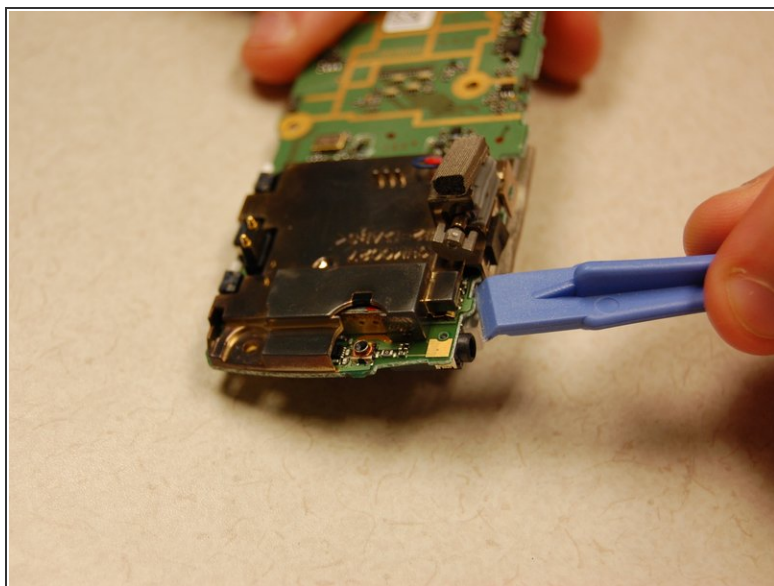
- Use the plastic opening tool to remove the motherboard from the front case.

Step 7 — Display



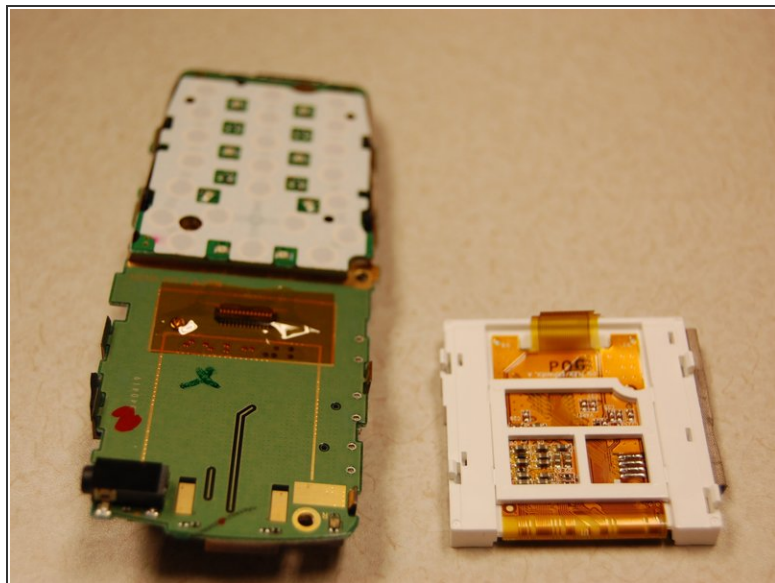
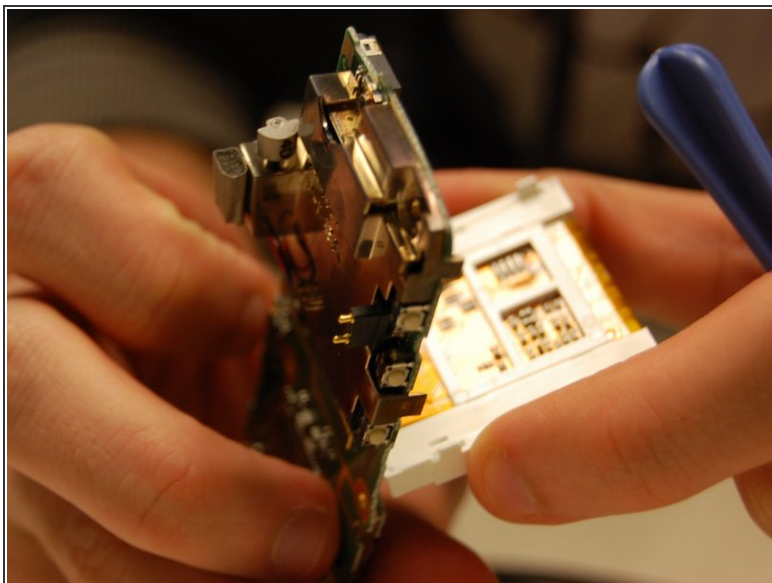
- Locate the 4 white clips of the display.

Step 8



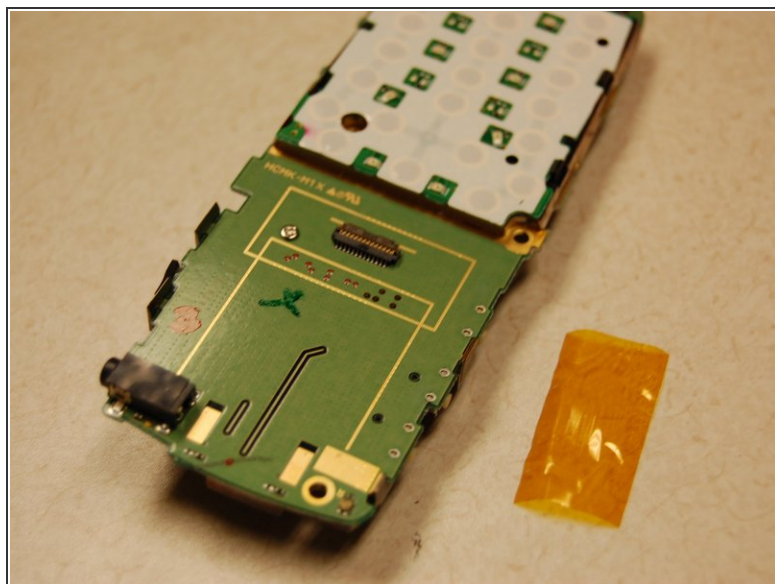
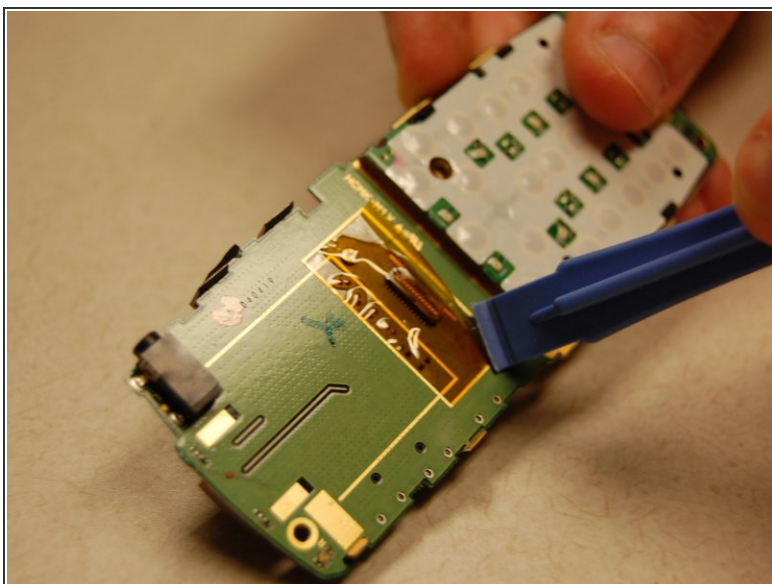
- Using the plastic opening tool, pull the white clips of the display away from the printed circuit board to unclip display.

Step 9



- Grasp the display on both sides and carefully pull the display off of the printed circuit board.

Step 10



- Using the plastic opening tool, carefully remove the yellow film covering the display connector.
(i) Do not damage the yellow film. Ensure that it stays in one piece and does not tear.

To reassemble your device, follow these instructions in reverse order.