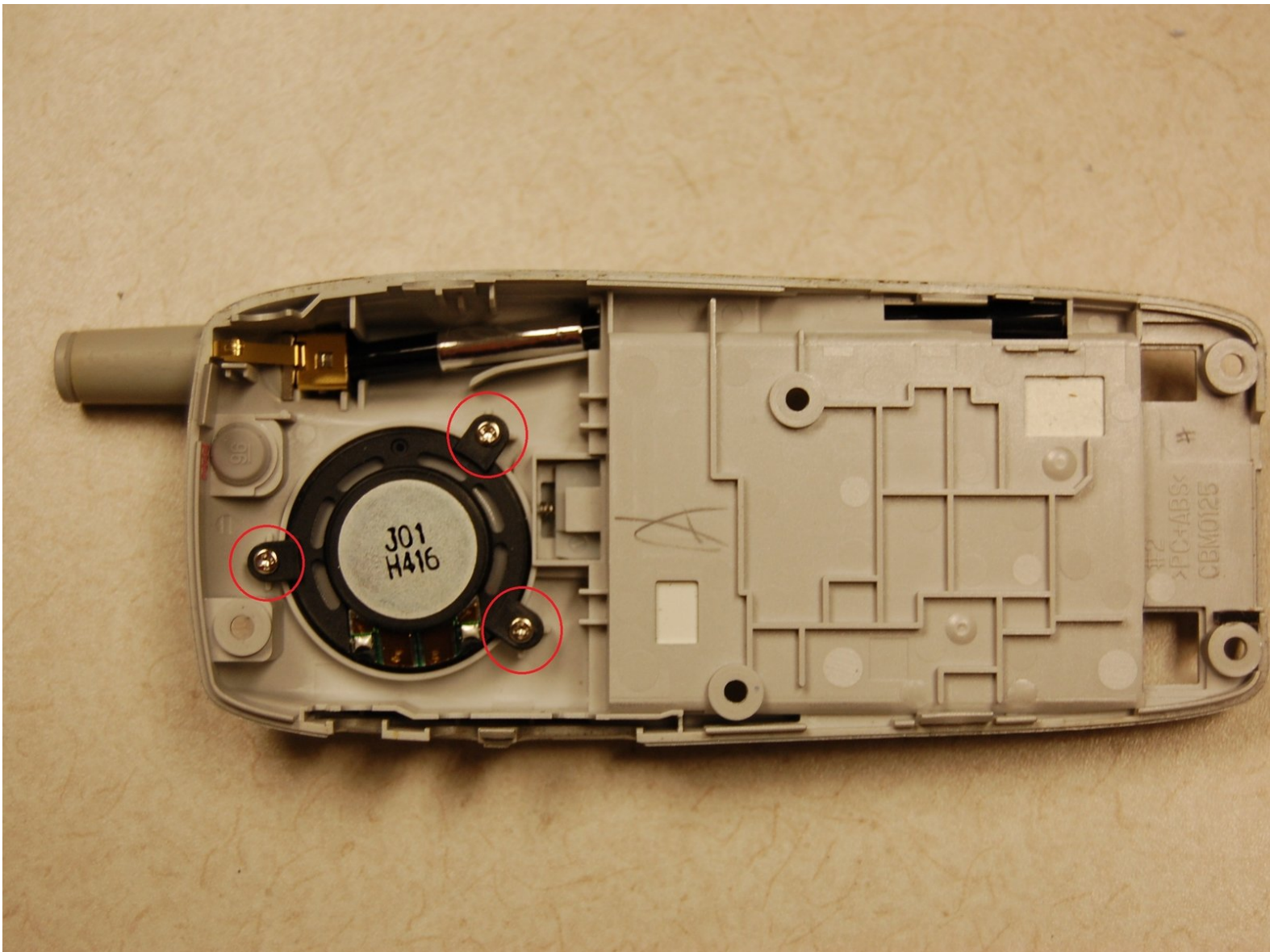




Sprint Sanyo RL-4920 Speaker Replacement

Replace the speaker on the phone.

Written By: Austin Shores





TOOLS:

- [64 Bit Driver Kit](#) (1)
-

Step 1 — Back of Phone



- Flip the phone over so that the screen is facing down.

Step 2 — Remove Battery Pack



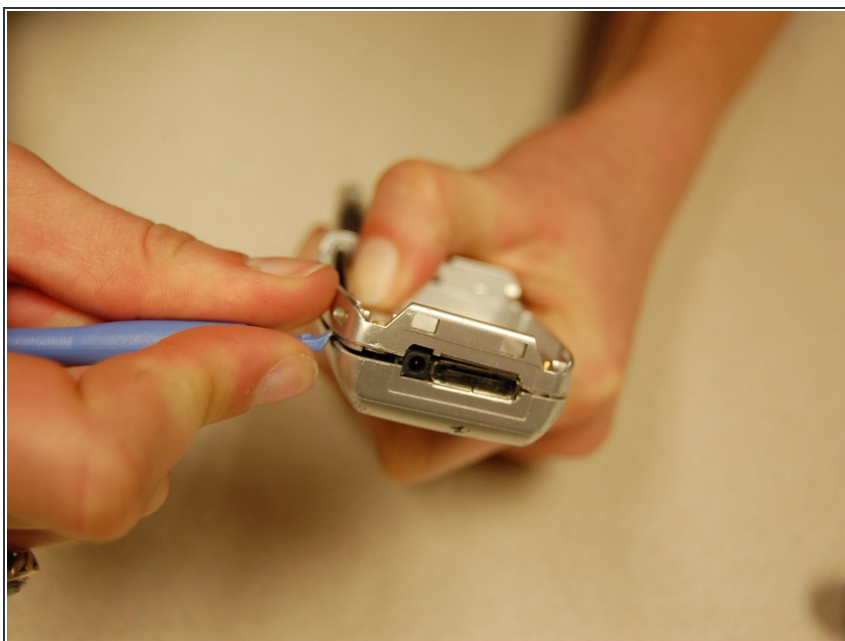
- Push the gray lever up towards the top of the phone.
- Pull up on the battery pack and completely separate it from the phone.

Step 3 — Screws



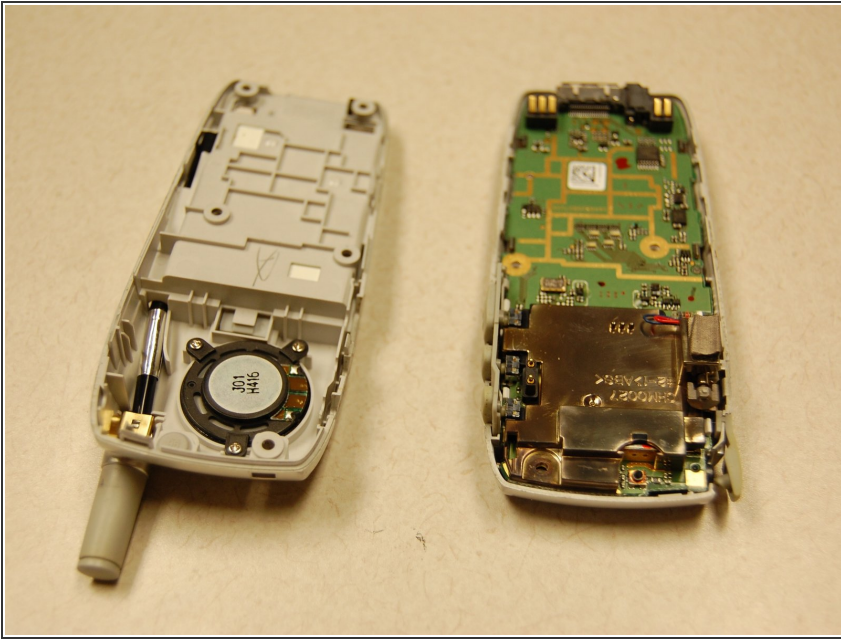
- Locate the five screws around the back casing.
- Use a three-prong screw bit to remove all five screws.

Step 4 — Separate Cases



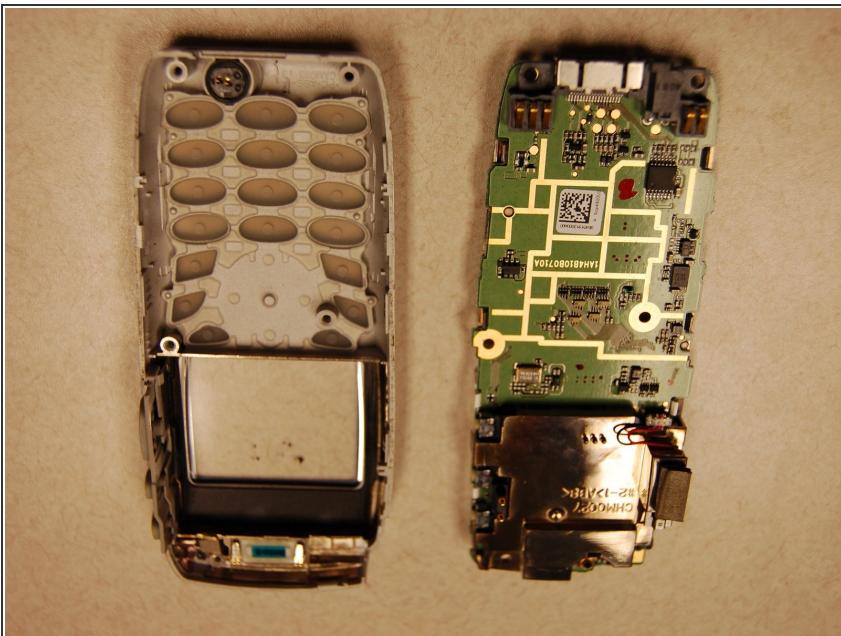
- Use the plastic opening tool and slide it around the phone to pull apart the front and back casing.

Step 5 — Separate Cases



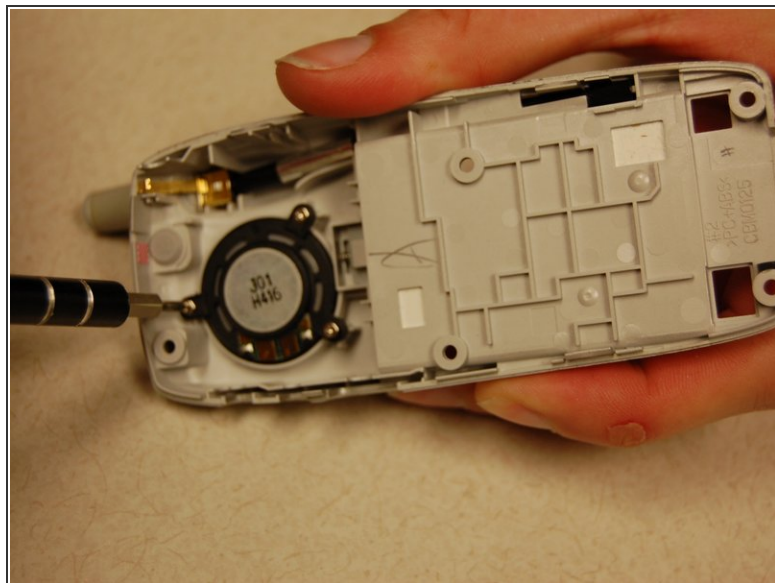
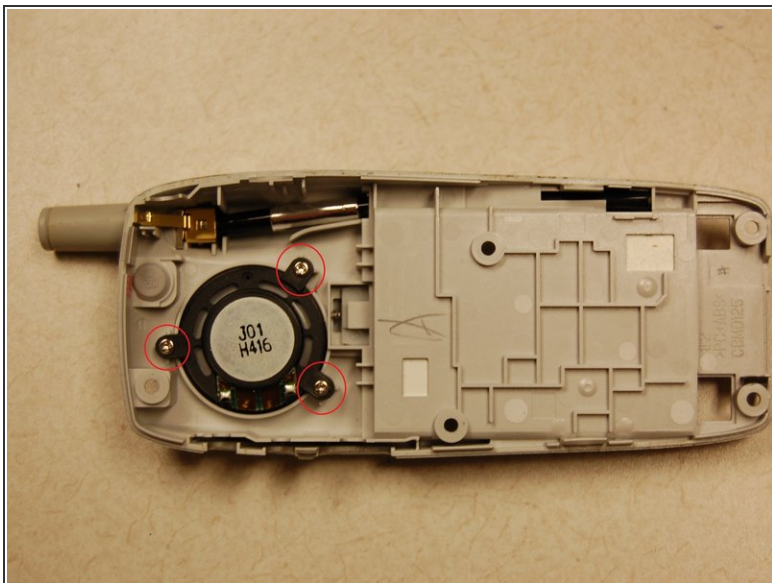
- Separate the two cases.

Step 6 — The Front Case



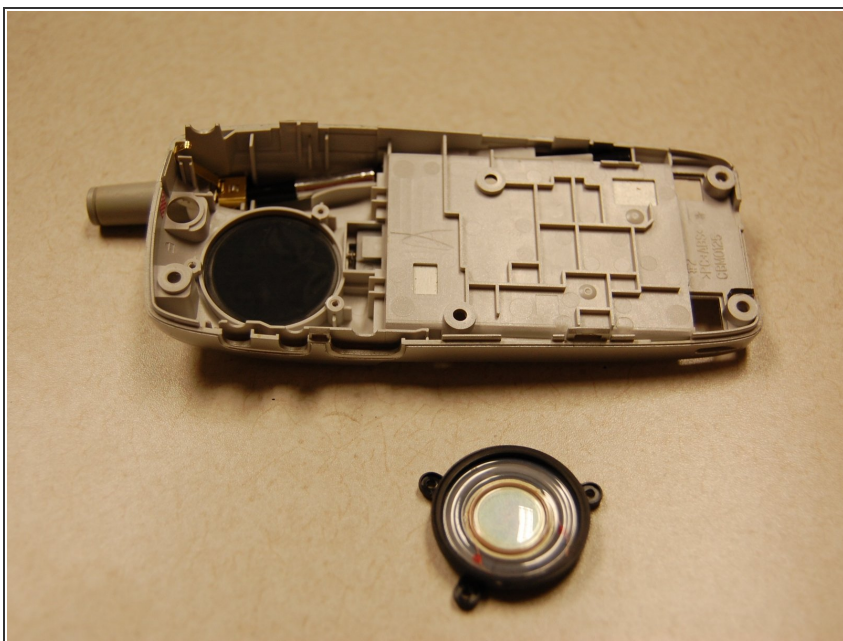
- Use the plastic opening tool to remove the motherboard from the front case.

Step 7 — Screws



- Locate the three screws securing the speaker.
- Use a Phillips-head screw bit to unscrew the screws

Step 8 — Replace Speaker



- Remove the speaker.
- Replace with new speaker.
- Secure new speaker with screws and reassemble phone.

To reassemble your device, follow these instructions in reverse order.