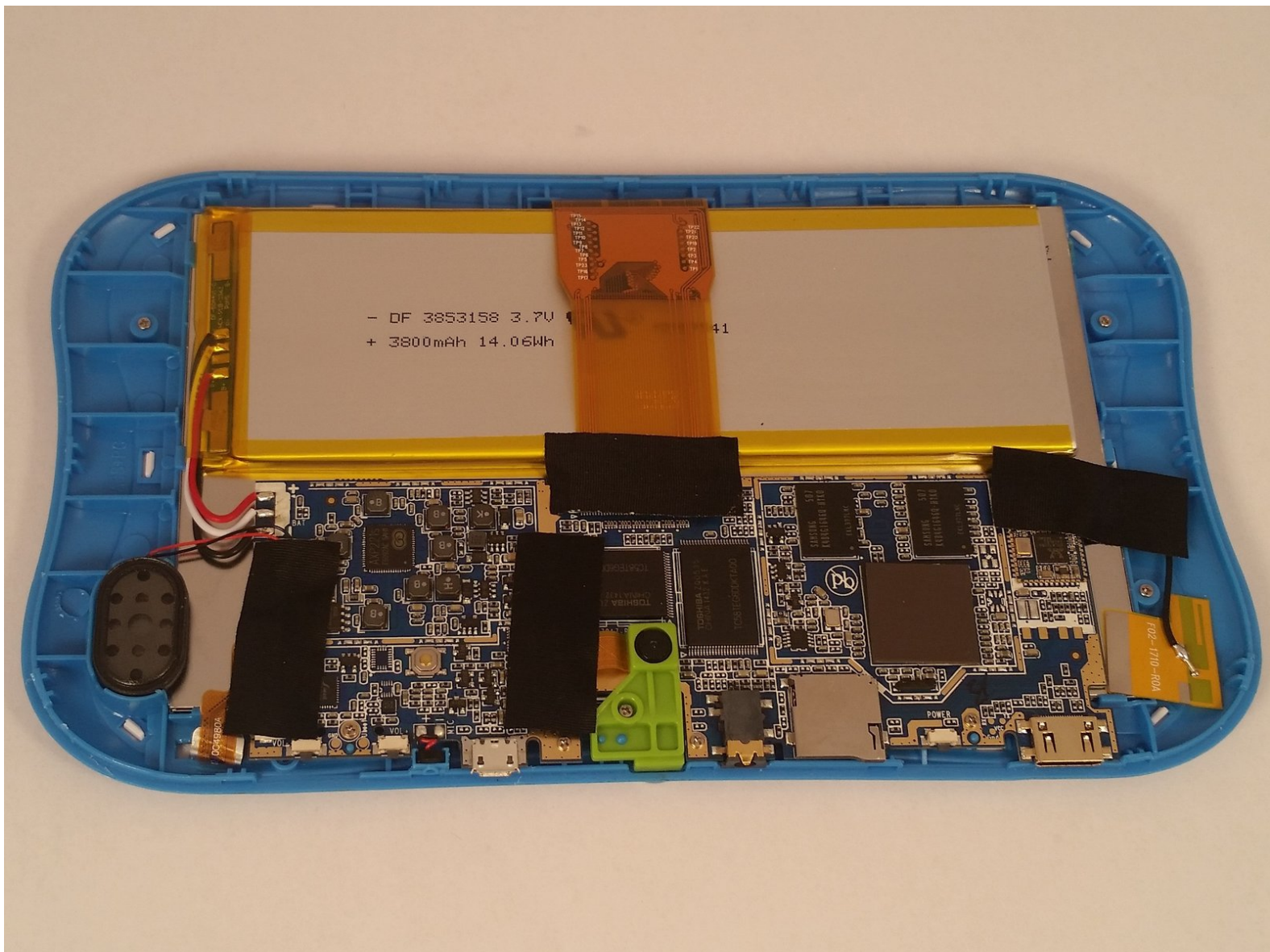




Sprout Channel Cubby Battery Replacement

How to replace a Sprout Channel Cubby battery.

Written By: jasen biggins



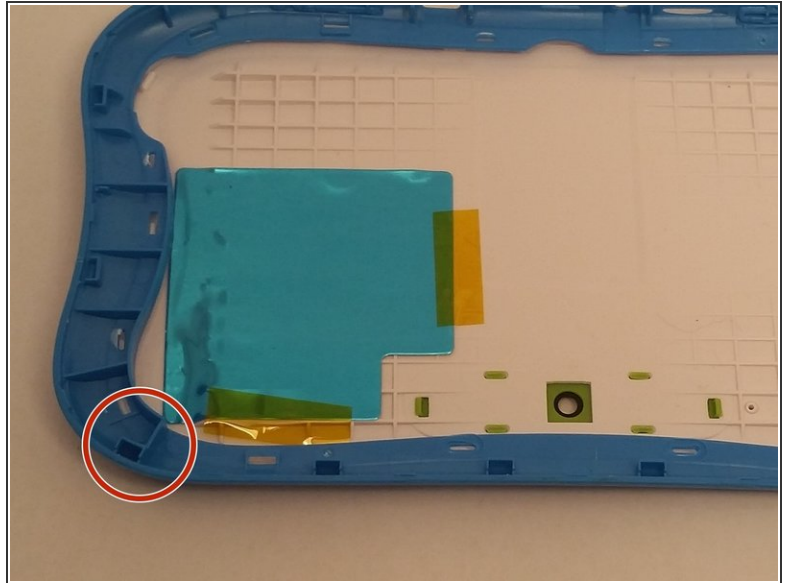
INTRODUCTION

The battery is fairly easy to replace the only issue with taking it out is the adhesive holding it in. the best way to do this is to heat it up, recommended tool is the iopener and the mettle spudger.

TOOLS:

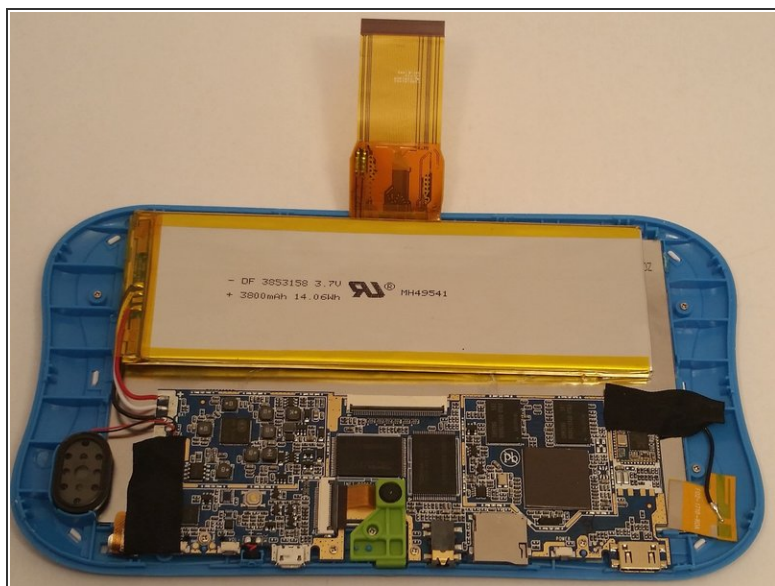
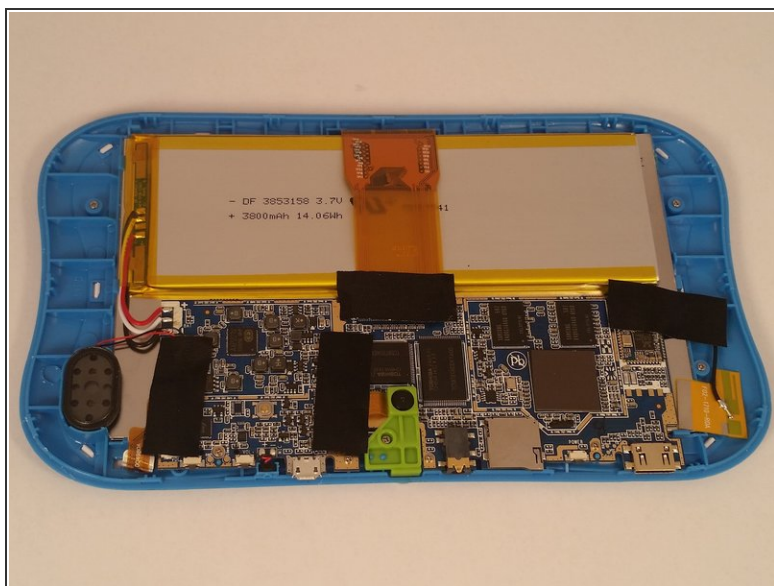
- [iFixit Opening Tools](#) (1)
 - [Spudger](#) (1)
-

Step 1 — Dissassemble the device



- Use an opening tool to push in and release sixteen small plastic clips around the edge of the case. As the clips are released, gradually pry the case apart.
- ⓘ It is easiest to start on the corners.

Step 2 — Battery



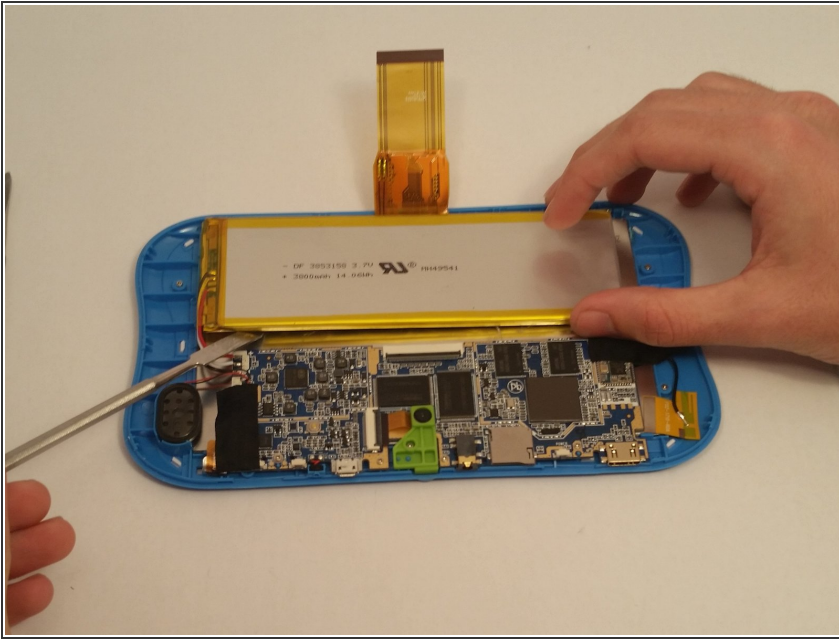
- Remove the black electrical tape over the ribbon connector.
 - Remove the ribbon connector over the battery.
- ⚠ Make sure to be careful of the ribbon connector while working on the device.

Step 3



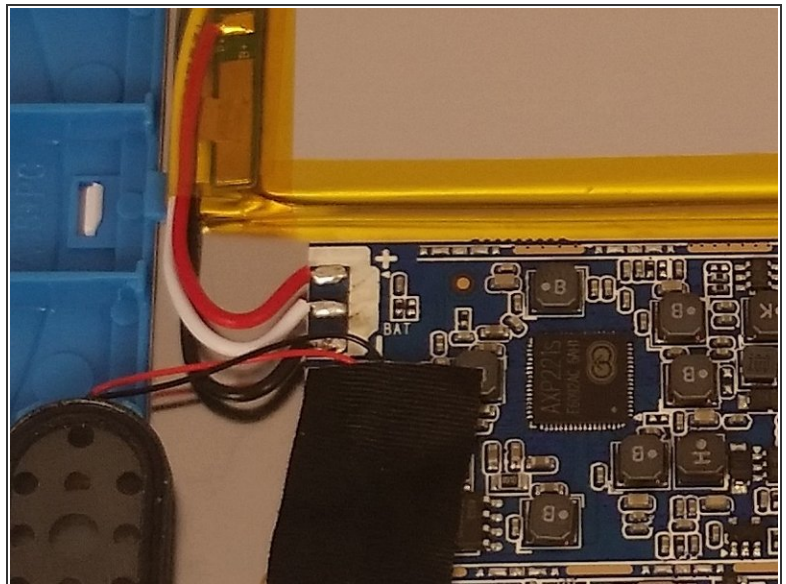
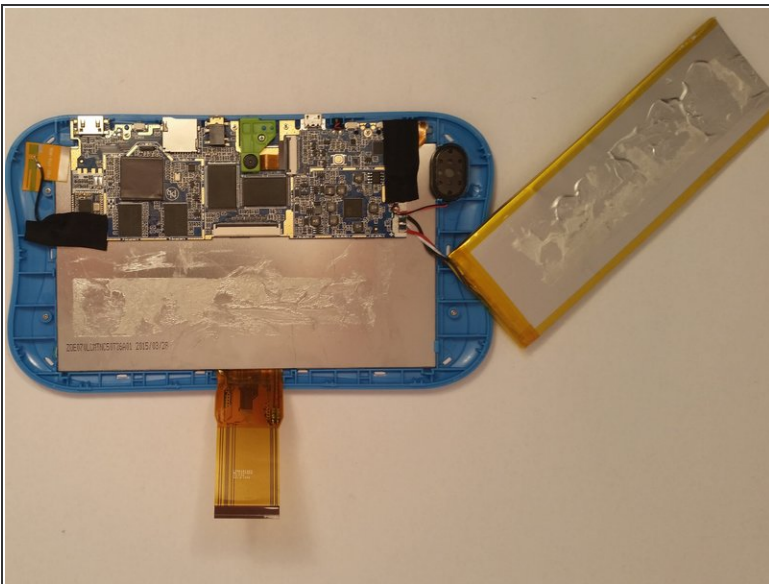
- Next you must heat up the battery to help weaken the adhesive connecting the battery to the device.

Step 4



⚠ Once this is done start to pry the battery away from the device carefully. It helps to start at the corners and move inward.

Step 5



- ☑ Once you remove the battery from the device it is still connected by three wires: red, black, and, white. It is important to remember the order they are in when reconnecting the new battery.

To reassemble your device, follow these instructions in reverse order.

This document was generated on 2020-02-27 06:51:05 AM (MST).

