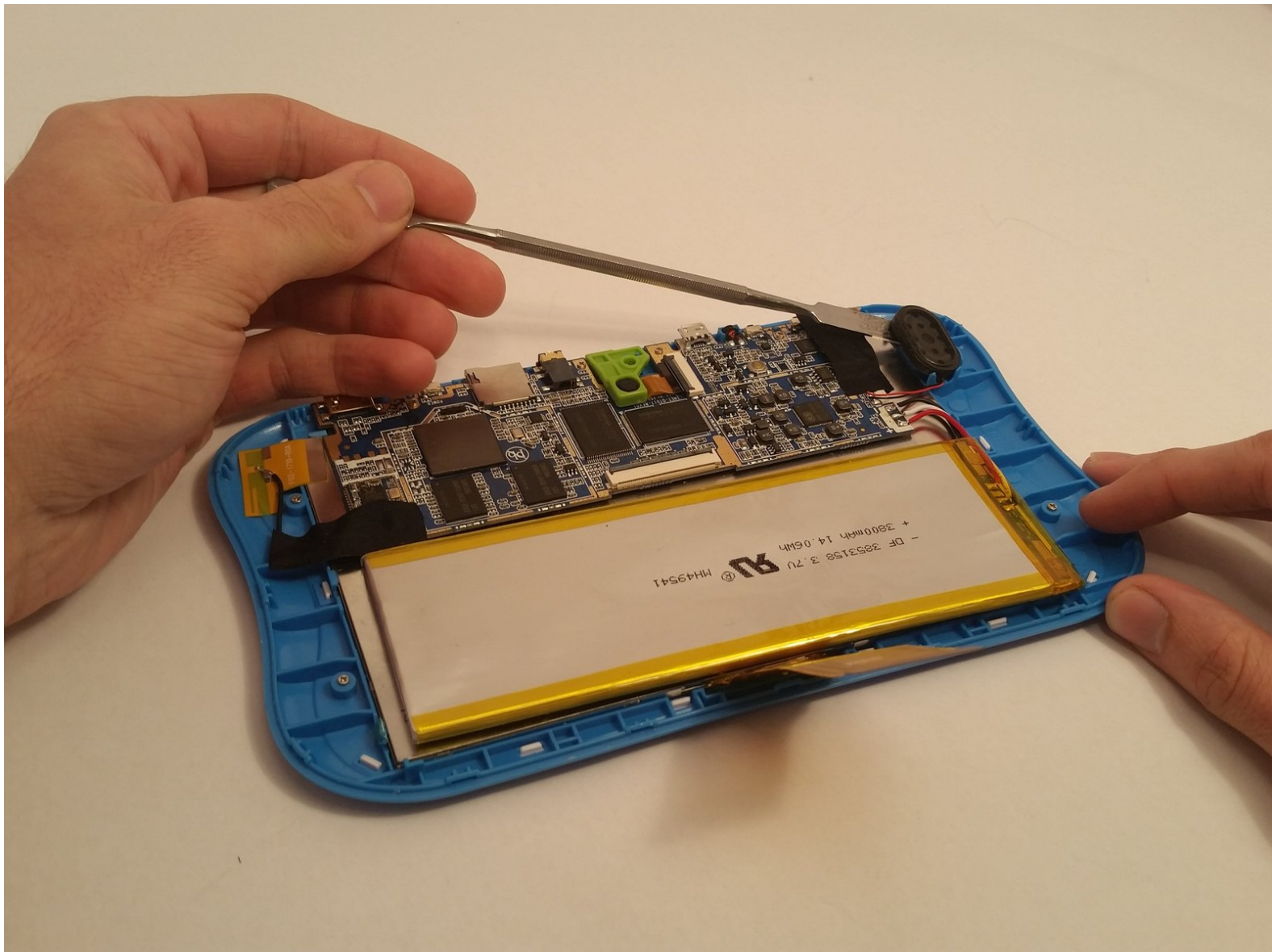




# Sprout Channel Cubby Speaker Replacement

A how-to guide for replacing the speaker on the Sprout Channel Cubby Tablet

Written By: jasen biggins



## INTRODUCTION

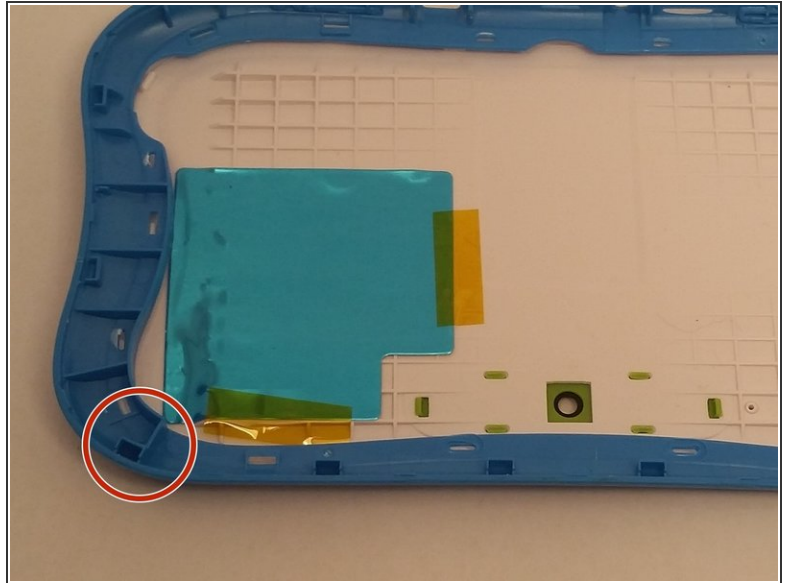
The replacement for the speaker is rather simple. However, soldering is necessary when attaching the new speaker.



### TOOLS:

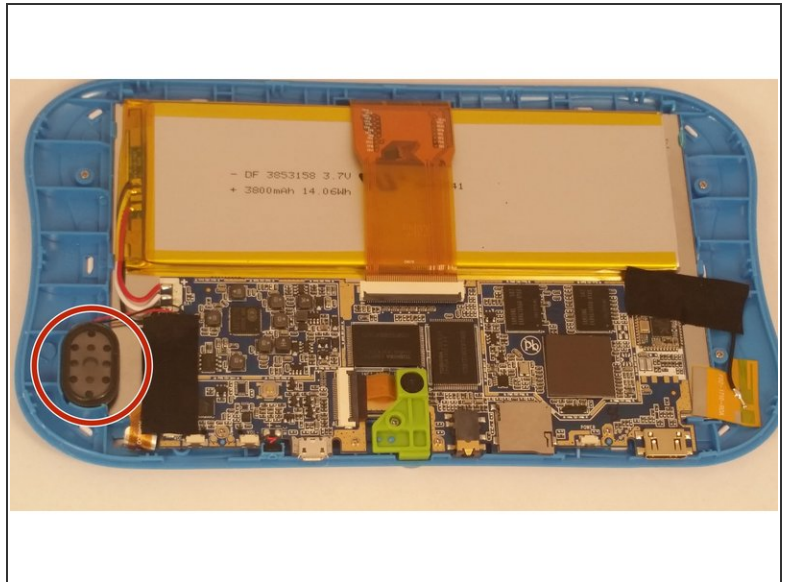
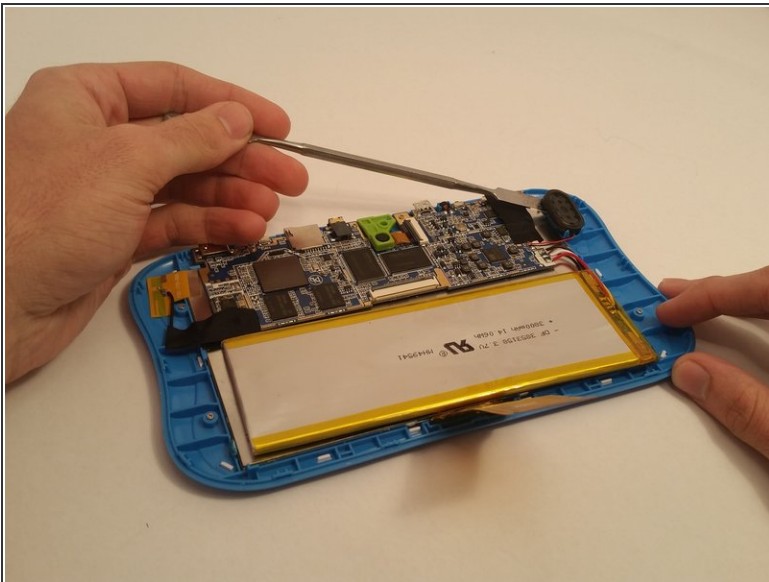
- [iFixit Opening Tools](#) (1)
  - [Spudger](#) (1)
  - [Soldering Iron](#) (1)
  - [Spatula](#) (1)
-

## Step 1 — Dissassemble the device



- Use an opening tool to push in and release sixteen small plastic clips around the edge of the case. As the clips are released, gradually pry the case apart.
- ① It is easiest to start on the corners.

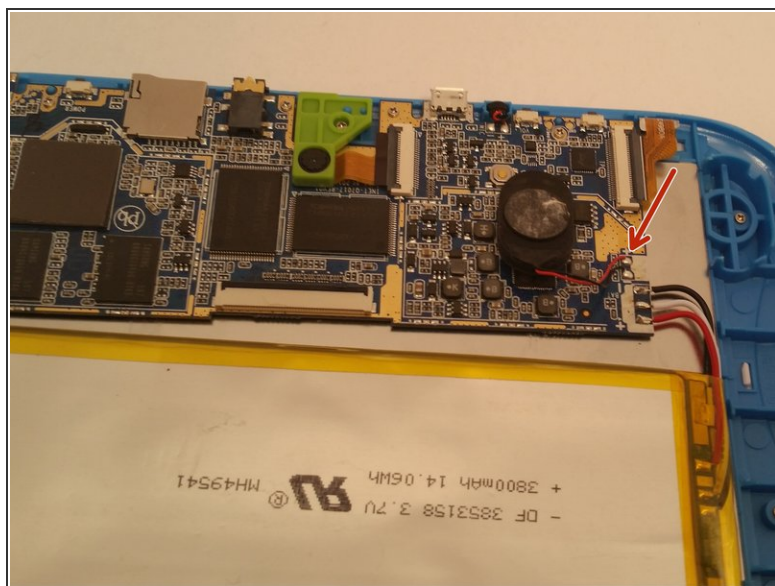
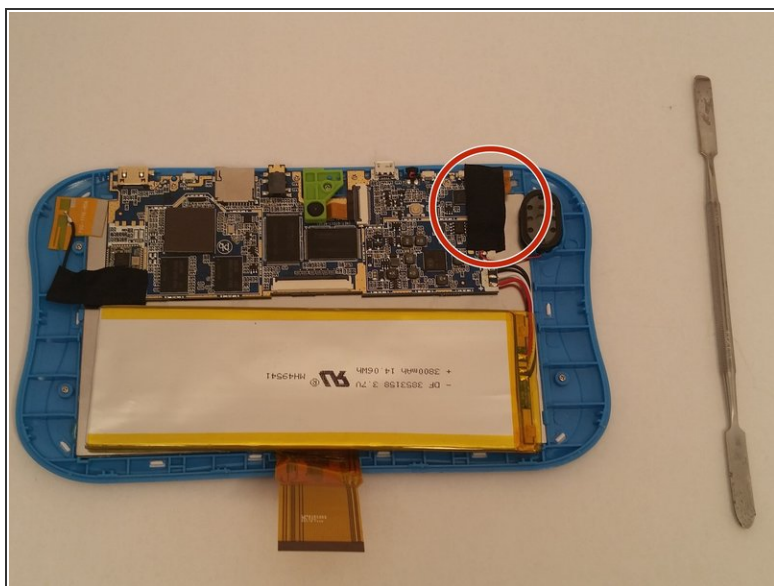
## Step 2 — Speaker



- While using the spatula, slowly get under the top part of the speaker. Then slowly move down the speaker to detach it from the device (there is a small amount of adhesive).



## Step 3



- Remove black tape.
- Disconnect the red and black wires which are soldered to the device. Make sure to not remove the wires that connect to the battery.
- Replace the speaker.
- Follow the steps in reverse order (be sure to solder the wires correctly) to install it.

To reassemble your device, follow these instructions in reverse order.