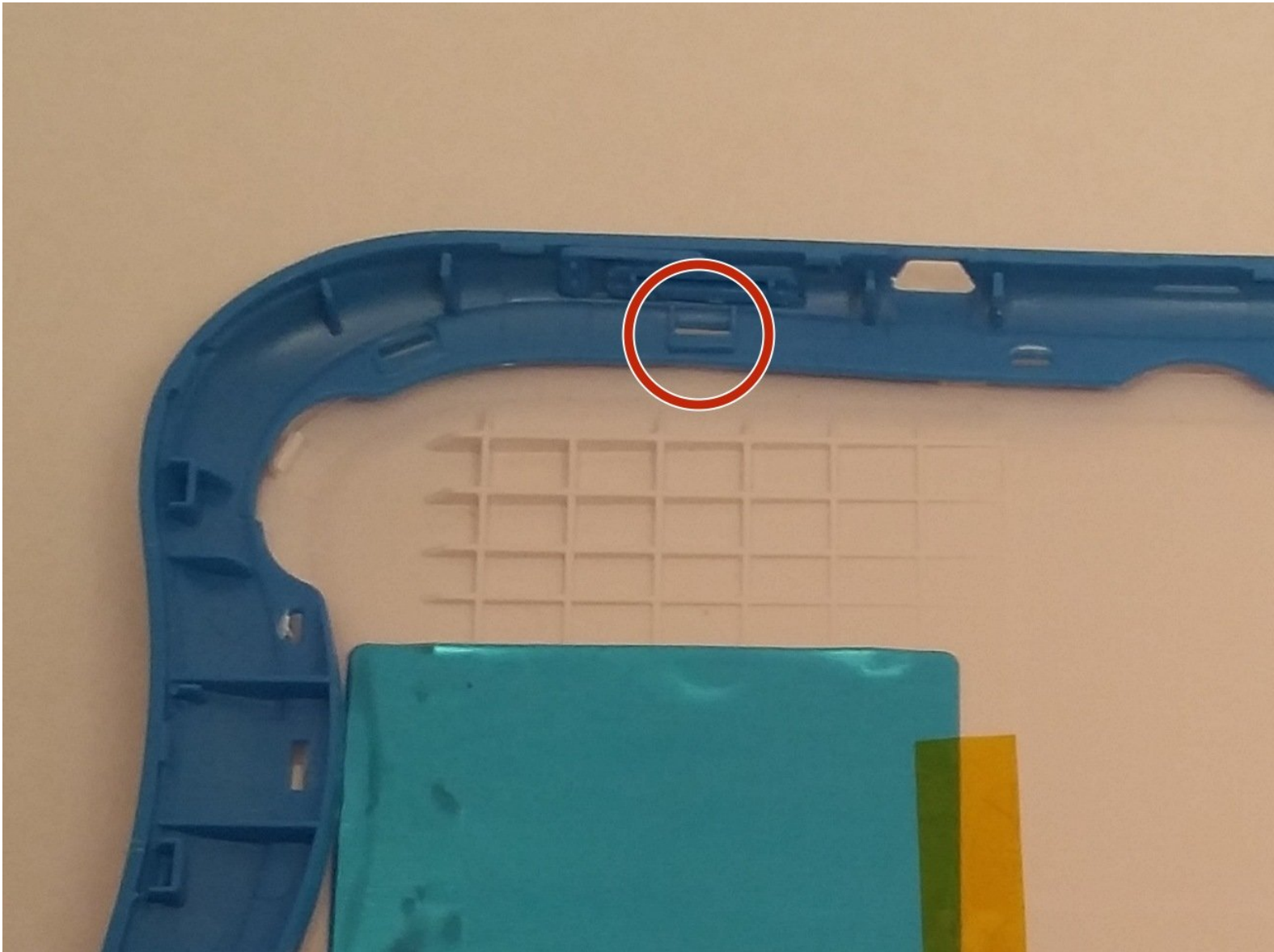




# Sprout channel cubby outer trim Replacement

How to take apart the outer trim of the device for replacement.

Written By: jasen biggins



---

## INTRODUCTION

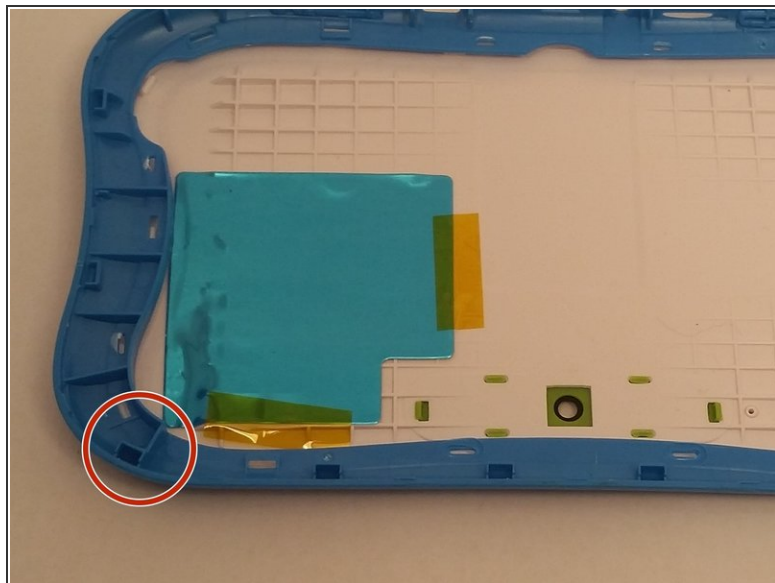
This is a fairly simple guide the only thing that is needed is the plastic spudger. The trim usual gets damaged from drops and will need to be replaced accordingly.

---

### TOOLS:

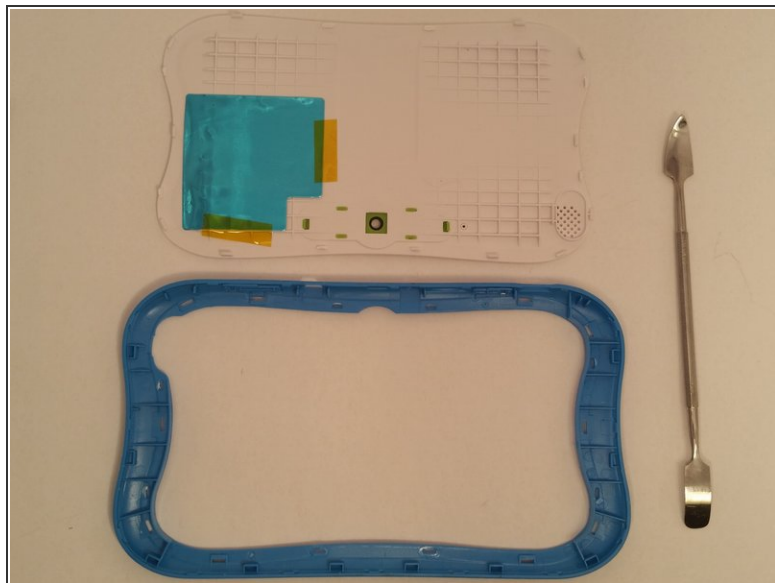
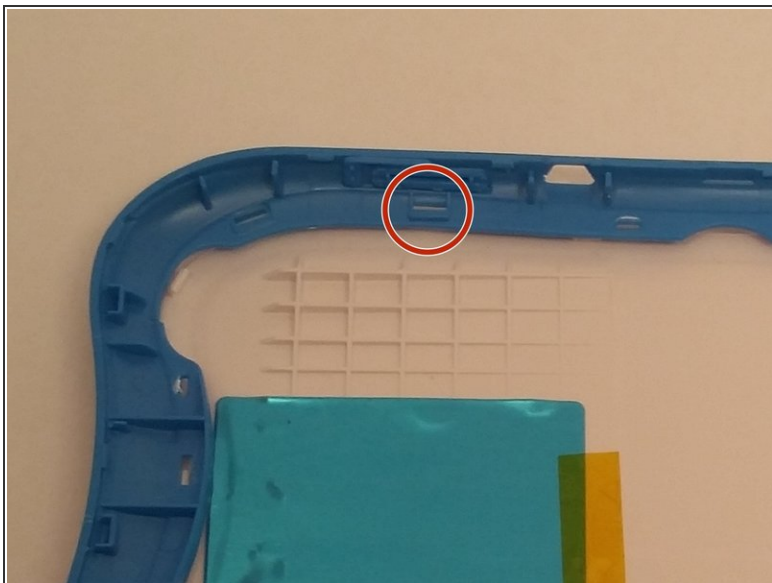
- [iFixit Opening Tools](#) (1)
  - [Metal Spudger](#) (1)
-

## Step 1 — Dissassemble the device



- Use an opening tool to push in and release sixteen small plastic clips around the edge of the case. As the clips are released, gradually pry the case apart.
- ⓘ It is easiest to start on the corners.

## Step 2 — outer trim



- There are 19 tabs that need to be pushed out of the inner trim. The metal spudger works great here.

⚠ Do not push too hard on the tabs or they will break.

To reassemble your device, follow these instructions in reverse order.