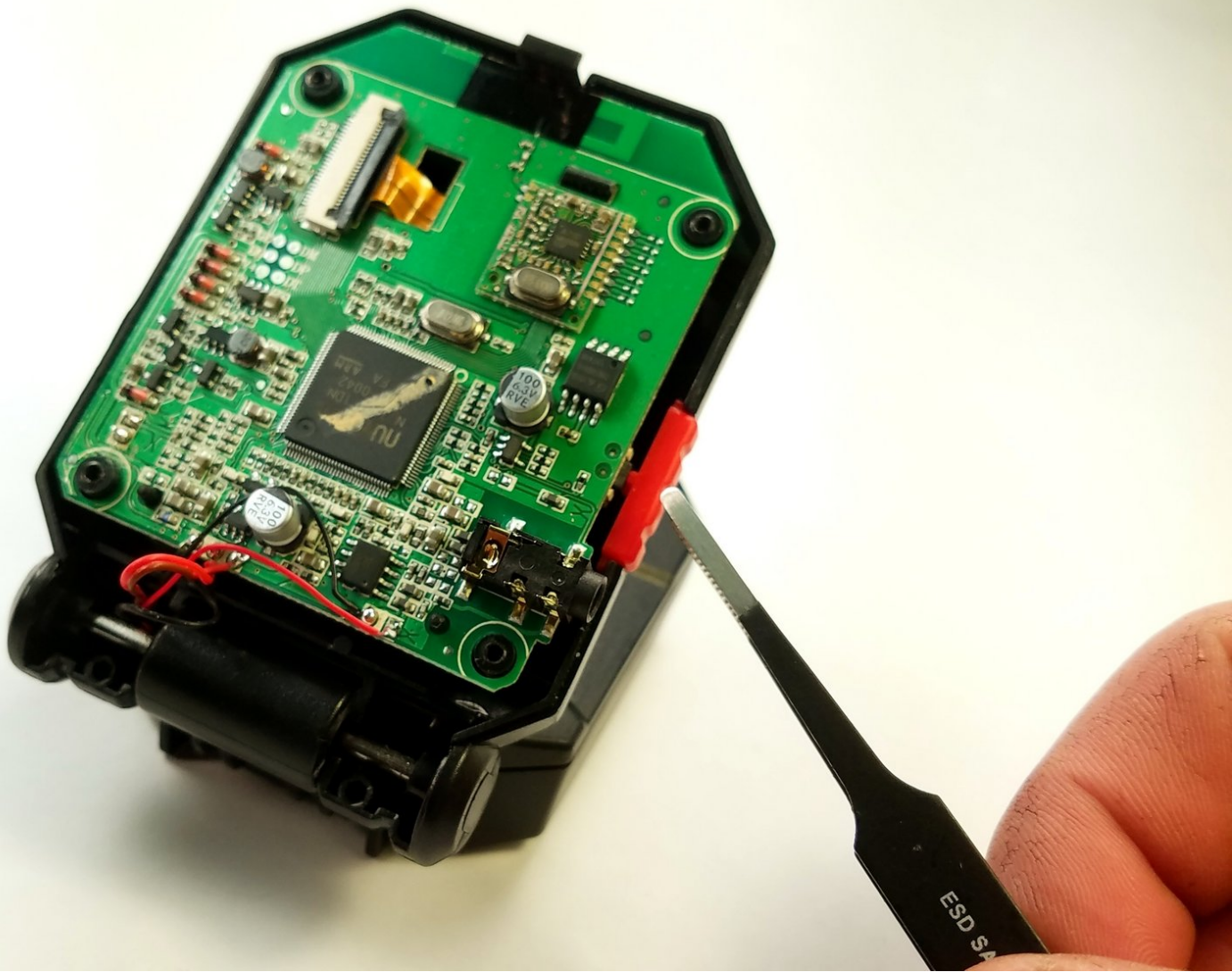




# Spy Gear Video Walkie Talkies Camera Replacement

This guide will help you break down the Spy Gear Video Walkie Talkies, allowing you to replace batteries, and have access to the internal components of the device such as the camera and screen.

Written By: James French



---

## INTRODUCTION

This disassembly will allow you to replace the batteries, and have access to the internal components of the device.



### TOOLS:

- [Metal Spudger](#) (1)
  - [64 Bit Driver Kit](#) (1)
  - [Heavy-Duty Spudger](#) (1)
  - [Tweezers](#) (1)
-

## Step 1 — Top Cover



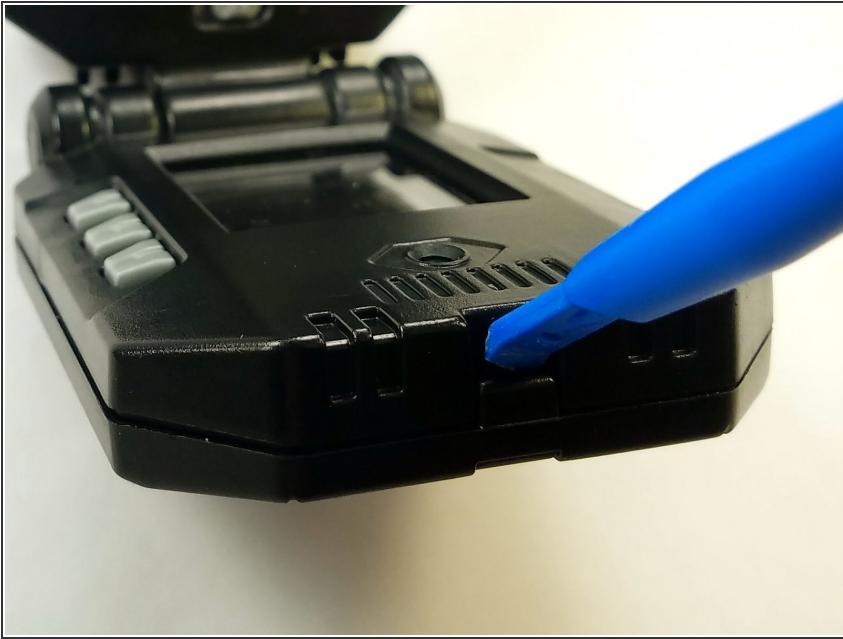
- Remove the battery cover by removing the P1 Philips screw.
- Remove the 3 AA batteries by hand.

## Step 2



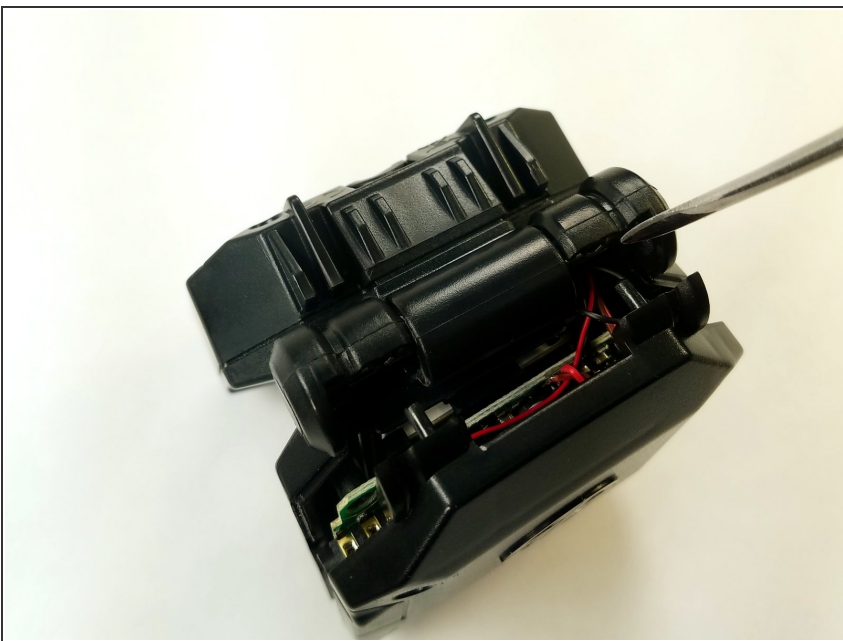
- Unscrew Top Cover with a 3mm Triangle driver bit from the Driver Kit.

### Step 3



- Use Opening Tool to release barbed latch on top cover.

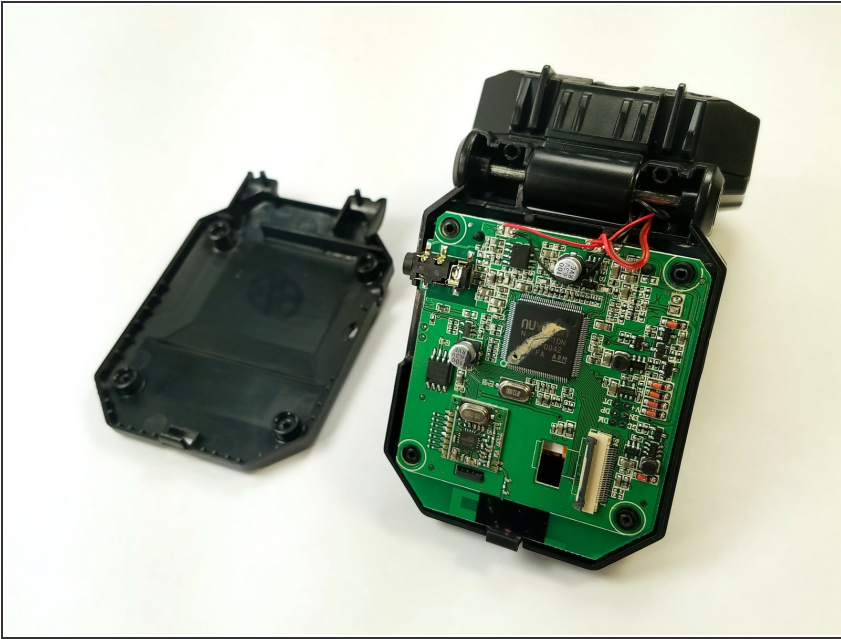
### Step 4



- Release pilot studs near the hinge with Metal Spudger.

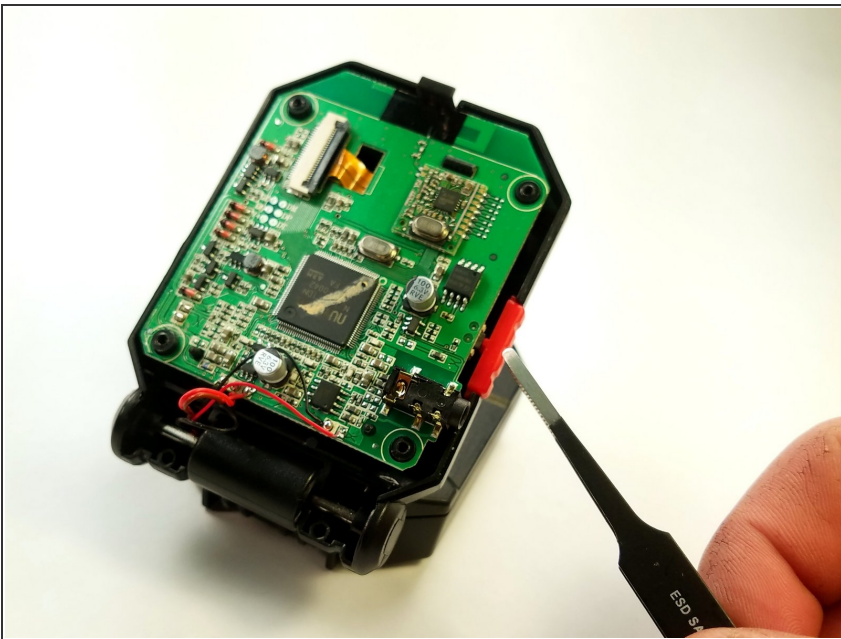


## Step 5



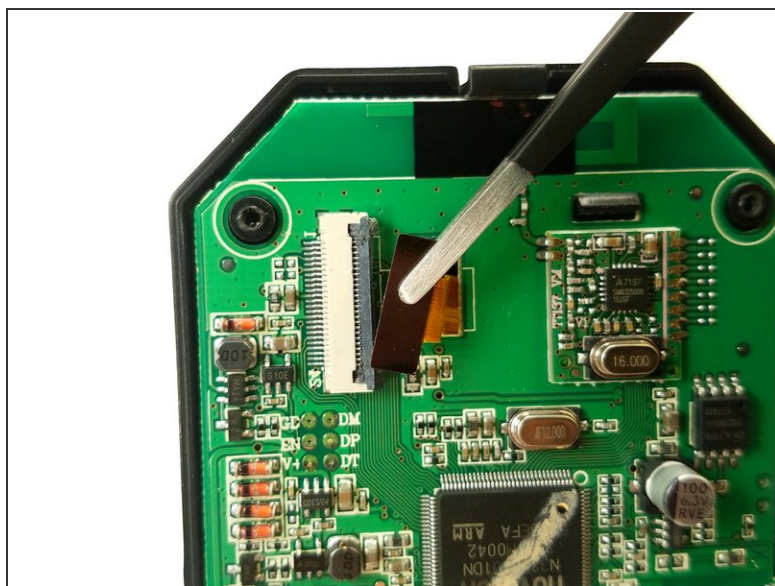
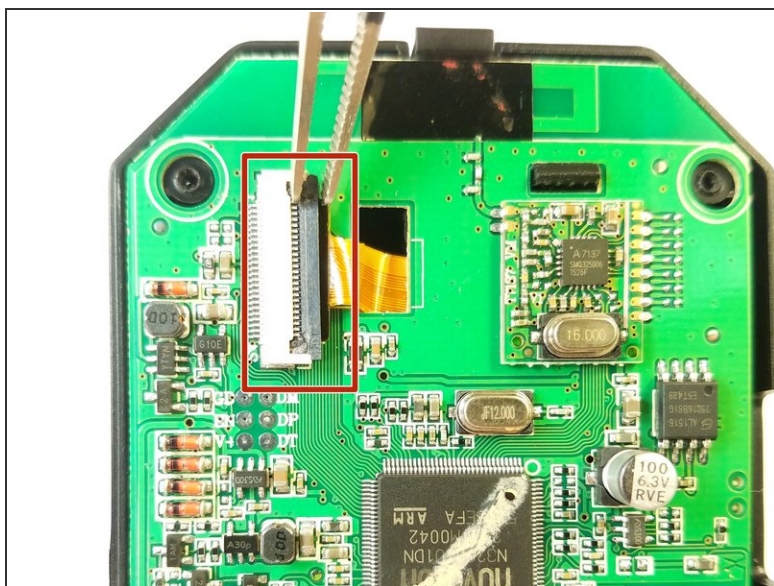
- Once the Top Cover is free, you will have full access to the circuitry.

## Step 6 — Camera



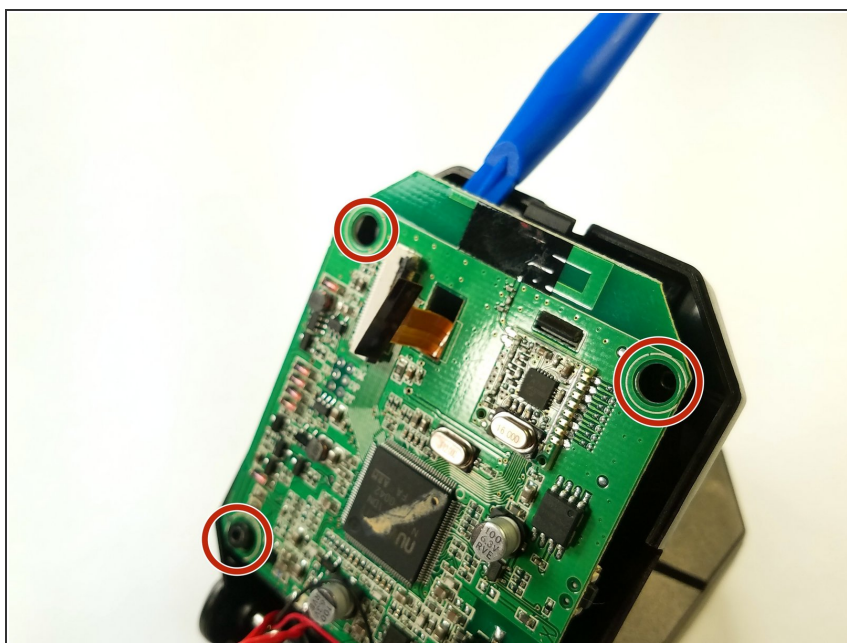
- Use Tweezers to remove the side button.

## Step 7



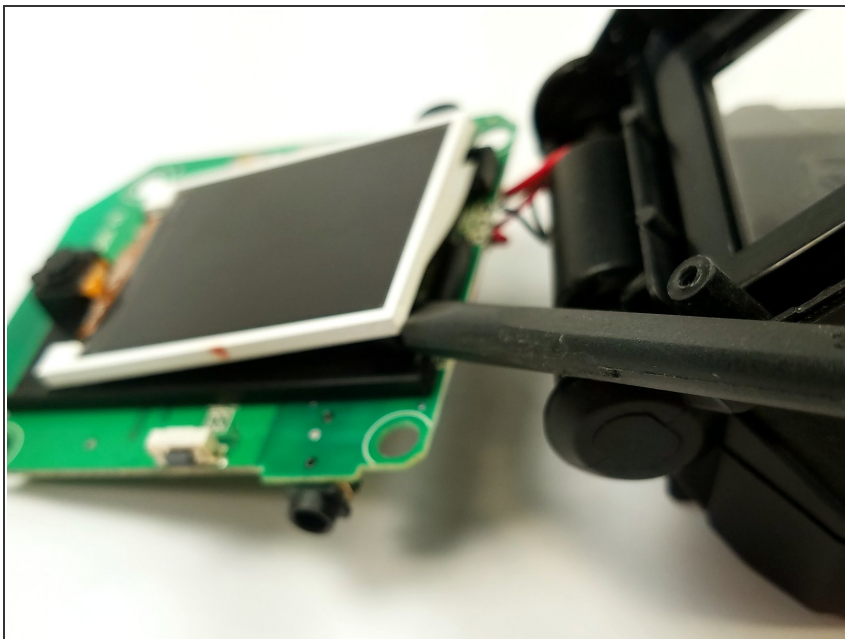
- Release the zero insertion force (ZIF) connector.
- Pull the ribbon cable away carefully.

## Step 8



- With the ribbon cable free from obstructions, use a Prying Tool to release the circuit board from the guide studs.

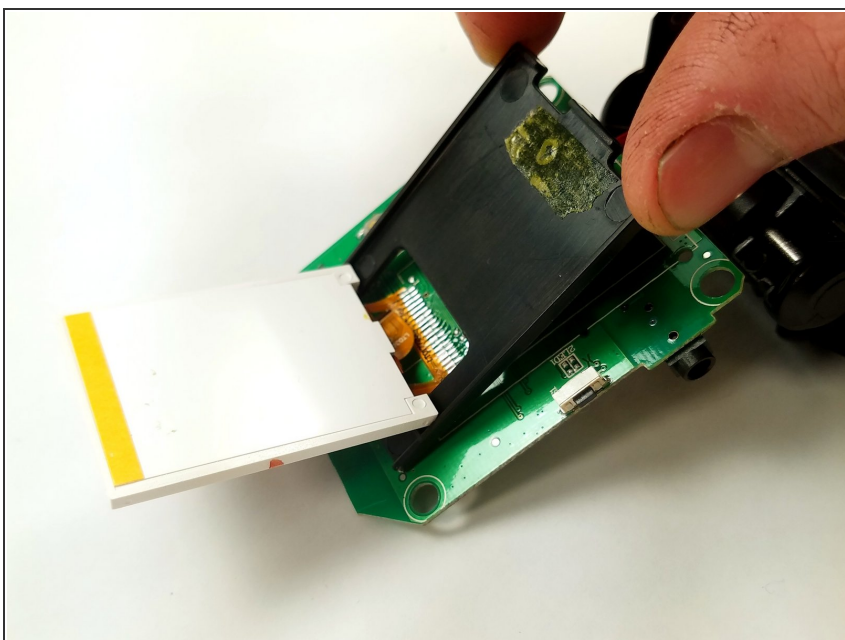
## Step 9



- With a plastic Prying Tool, separate the screen from the mounting tray.

⚠ Adhesive between the layers may provoke damage to the screen or tray. Take your time.

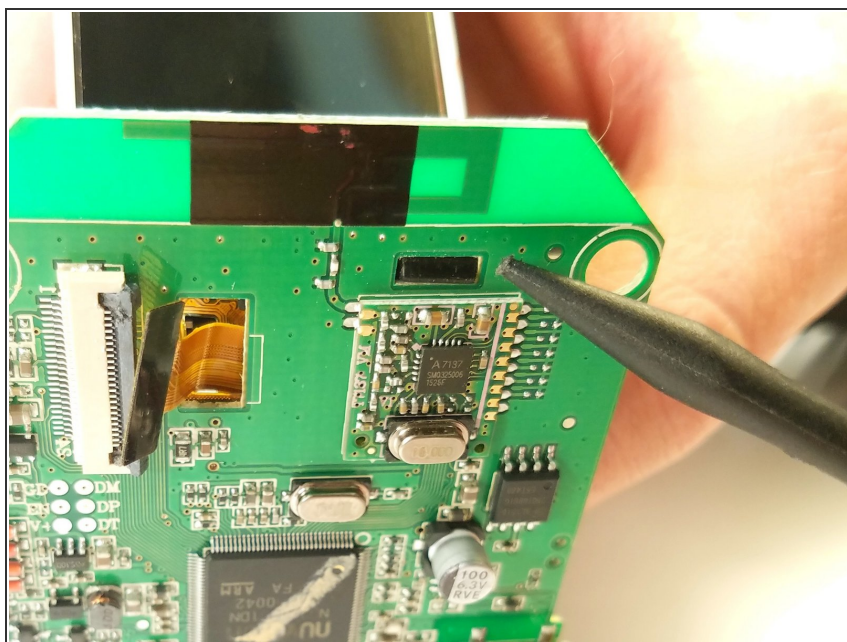
## Step 10



- Once the screen is completely folded away from the mounting tray, release it from the circuit board by hand.

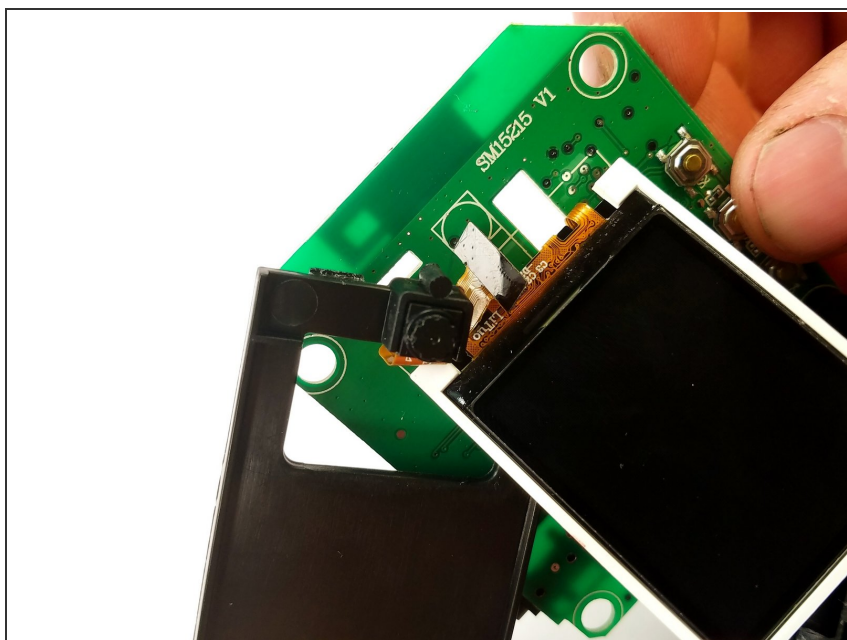


## Step 11



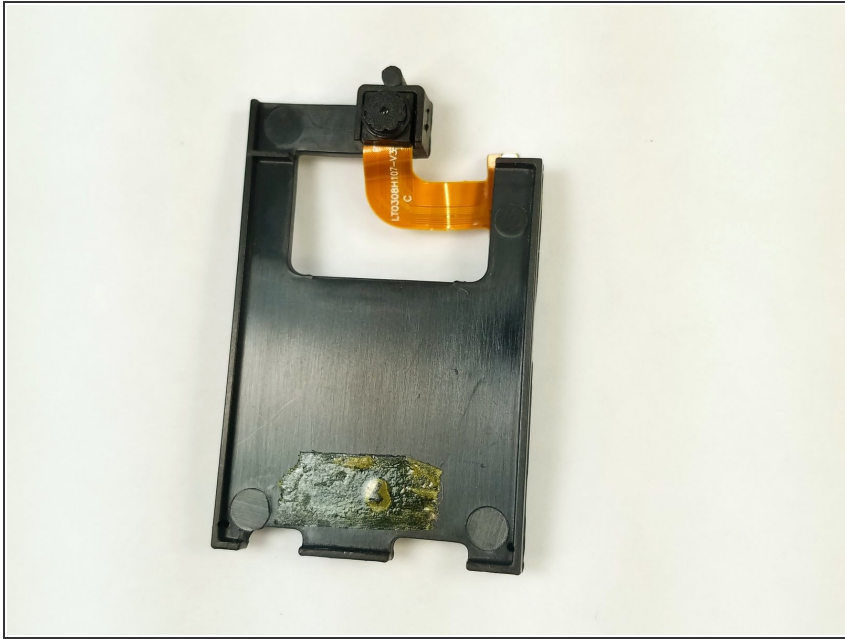
- Release the back of the mounting tray using a plastic Pick to unhook the barb from the circuit board.

## Step 12



- Now remove the mounting tray complete with camera and ribbon cable attached by sliding away from the screen.
- ⚠ You must not damage the screen or screen ribbon cable in this step.

## Step 13



- Discard faulty camera and mounting tray.

To reassemble your device, follow these instructions in reverse order.