



Staples 34462 Electric Pencil Sharpener Cover

This is a prerequisite guide for all of the other guides.

Written By: Jen Hawkins



INTRODUCTION

This is a prerequisite guide for replacing all of the Staples 34462 Electric Pencil Sharpener's parts. Or maybe your cover is just cosmetically damaged and you want to replace it. Follow the steps below to remove the cover for replacement.




TOOLS:

- [Phillips #00 Screwdriver](#) (1)
 - [iFixit Opening Tools](#) (1)
-

Step 1 — Cover



- Pull out the shavings tray from the pencil sharpener.

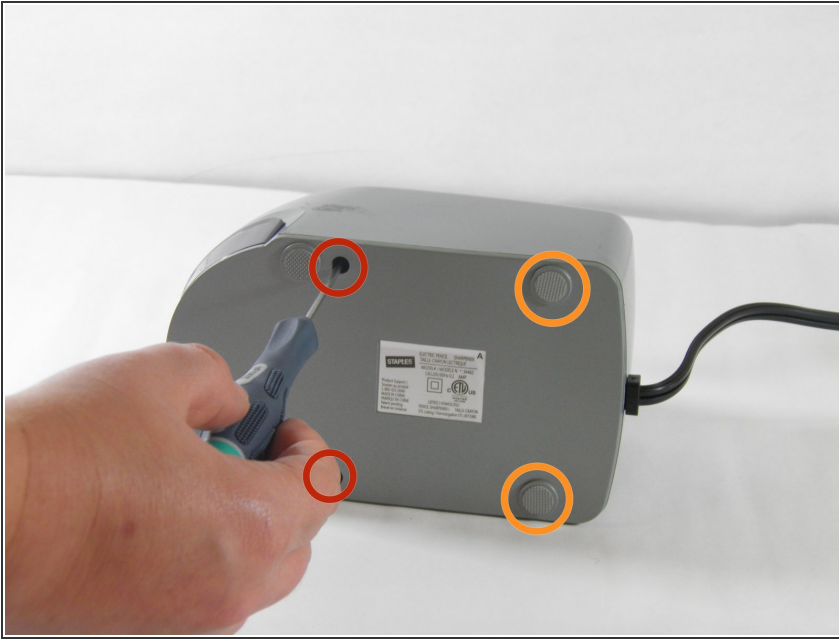
 Beware of loose pencil shavings falling on your workspace.

Step 2



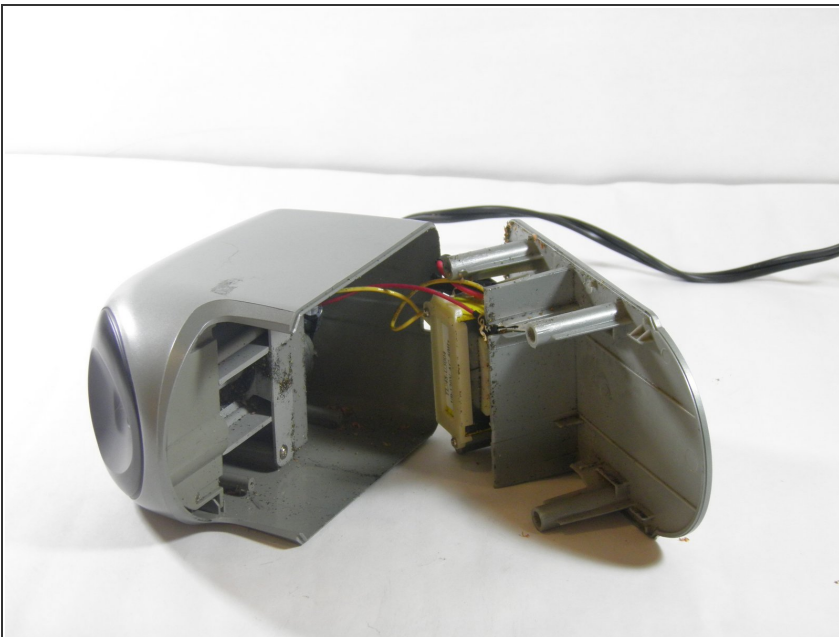
- Turn the pencil sharpener on its side.

Step 3



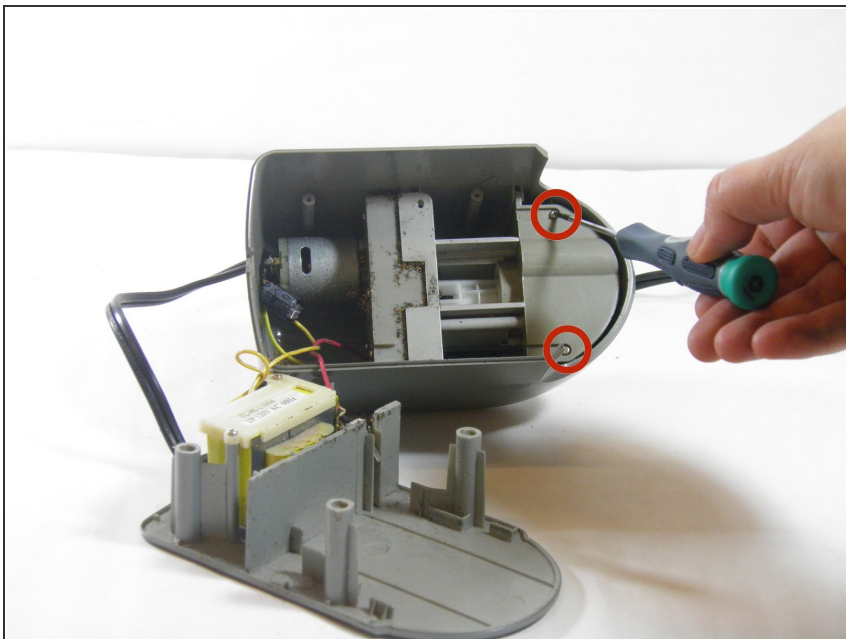
- Using a Phillips00 screwdriver, remove the two front 11.6mm screws.
 - Using the plastic opening tool, remove the back plastic feet.
 - After removing the back plastic feet, using a Phillips 00 screwdriver, remove the two back 11.6mm screws.
- i** The hole is deeper than you may think. It may take some time to get the screwdriver to click in.

Step 4



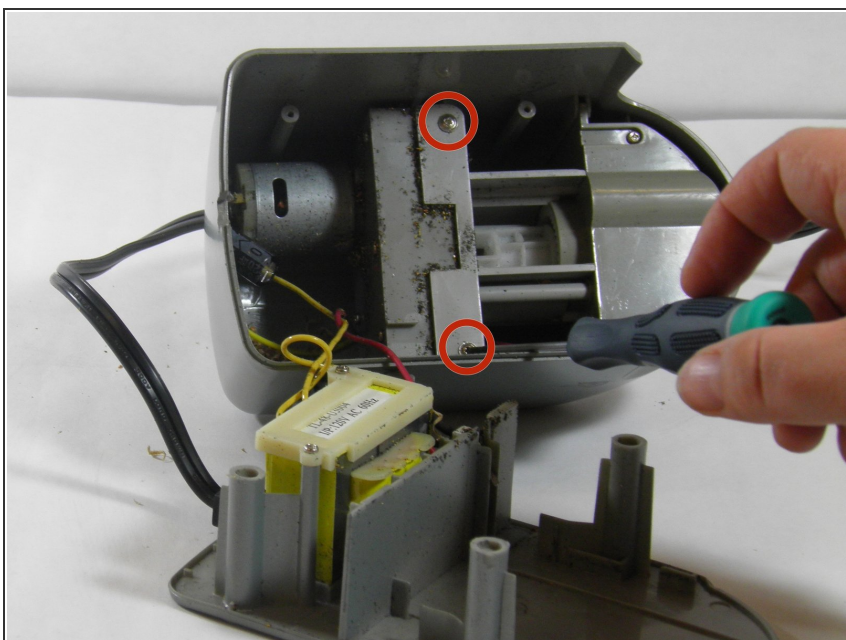
- Carefully pull apart the bottom panel from the top panel.
- !** Be careful not to pull too forcefully as the panels are connected by wires.
- !** Beware of pencil shavings falling out onto your workspace.

Step 5



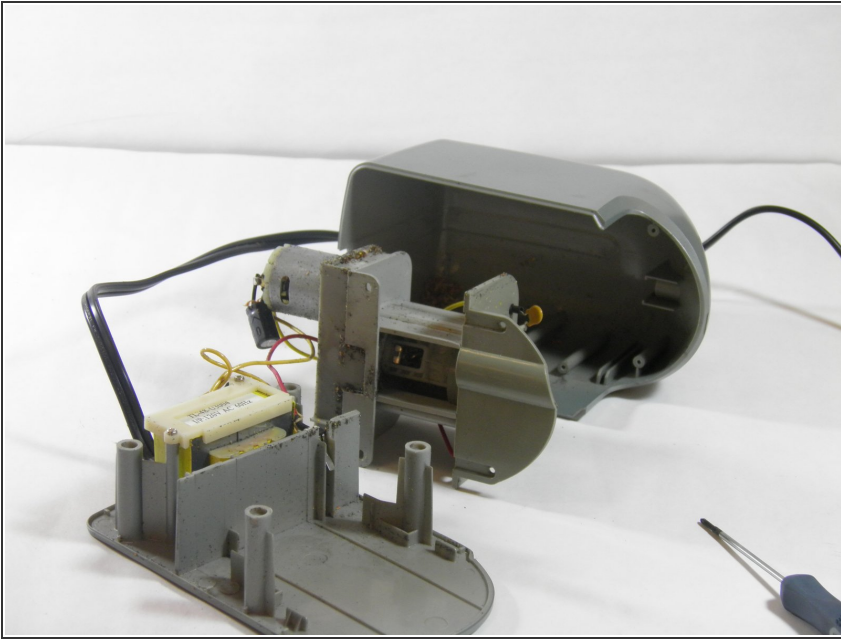
- Using a Phillips00 screwdriver, remove two 8.9mm flat edge screws from the top section of the top panel.

Step 6



- Using a Phillips00 screwdriver, remove two 10.3mm screws from the middle section of the top panel.

Step 7



- Carefully pull the cover from the top panel and set it aside.

To reassemble your device, follow these instructions in reverse order.