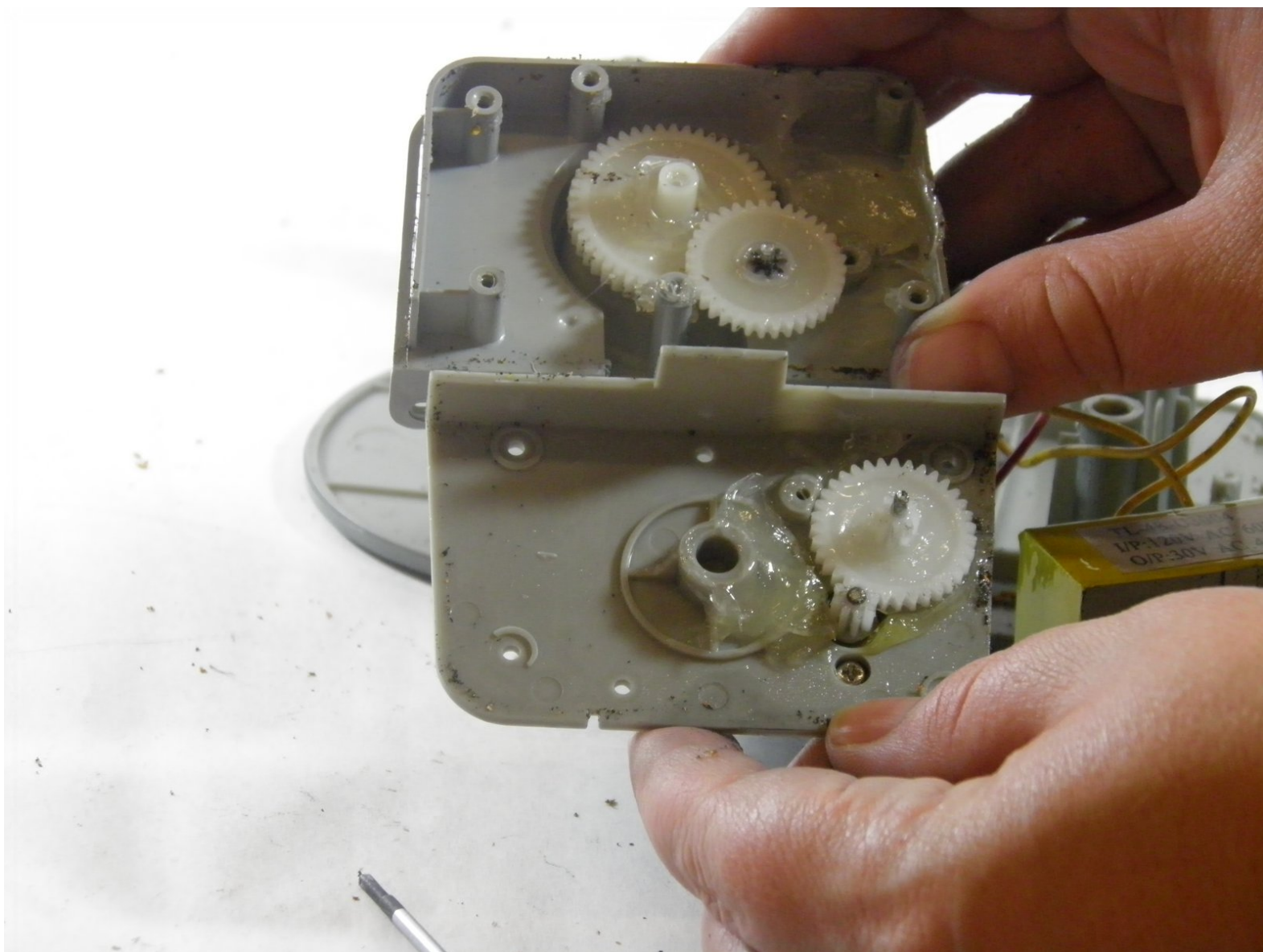




Staples 34462 Electric Pencil Sharpener Gears Replacement

This guide will walk you through the steps for replacing your gears in your Staples 34462 Electric Pencil Sharpener.

Written By: Brian Eliason



INTRODUCTION

If your sharpener is making a loud grinding noise or the electric motor is running but the cutter is not rotating, then follow these steps to replace the gears in your Staples 34462 Electric Pencil Sharpener.




TOOLS:

- [Phillips #00 Screwdriver](#) (1)
 - [iFixit Opening Tools](#) (1)
 - [Spudger](#) (1)
-

Step 1 — Cover



- Pull out the shavings tray from the pencil sharpener.

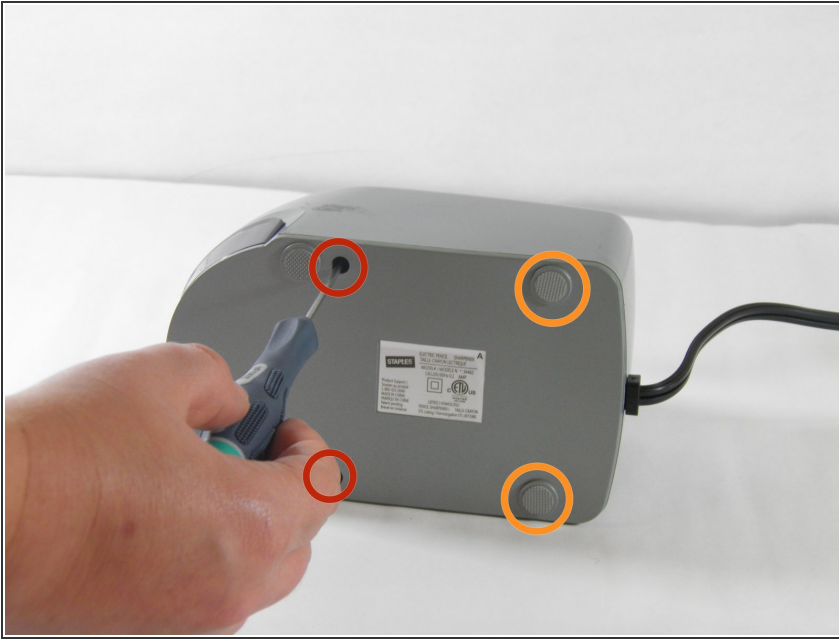
 Beware of loose pencil shavings falling on your workspace.

Step 2



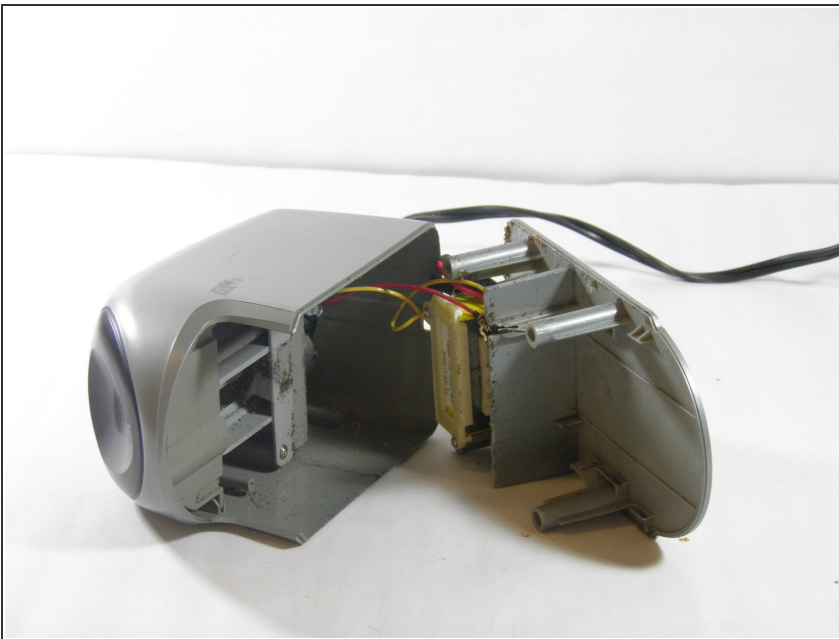
- Turn the pencil sharpener on its side.

Step 3



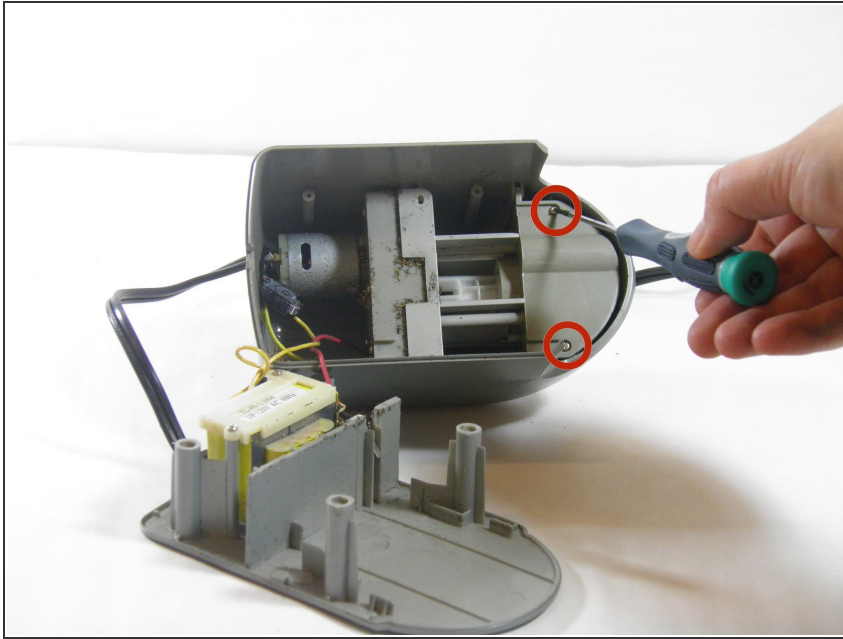
- Using a Phillips00 screwdriver, remove the two front 11.6mm screws.
 - Using the plastic opening tool, remove the back plastic feet.
 - After removing the back plastic feet, using a Phillips 00 screwdriver, remove the two back 11.6mm screws.
- ⓘ The hole is deeper than you may think. It may take some time to get the screwdriver to click in.

Step 4



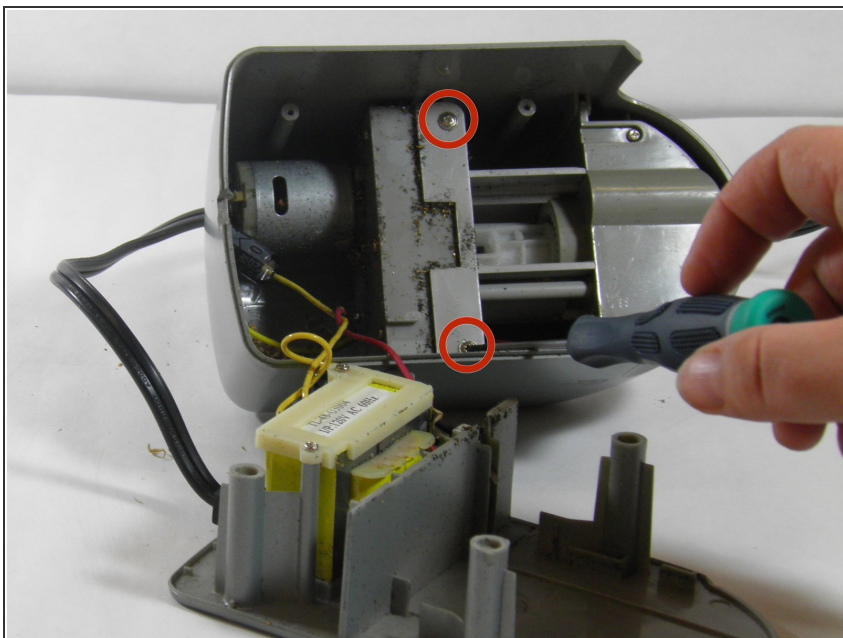
- Carefully pull apart the bottom panel from the top panel.
- ⚠ Be careful not to pull too forcefully as the panels are connected by wires.
- ⚠ Beware of pencil shavings falling out onto your workspace.

Step 5



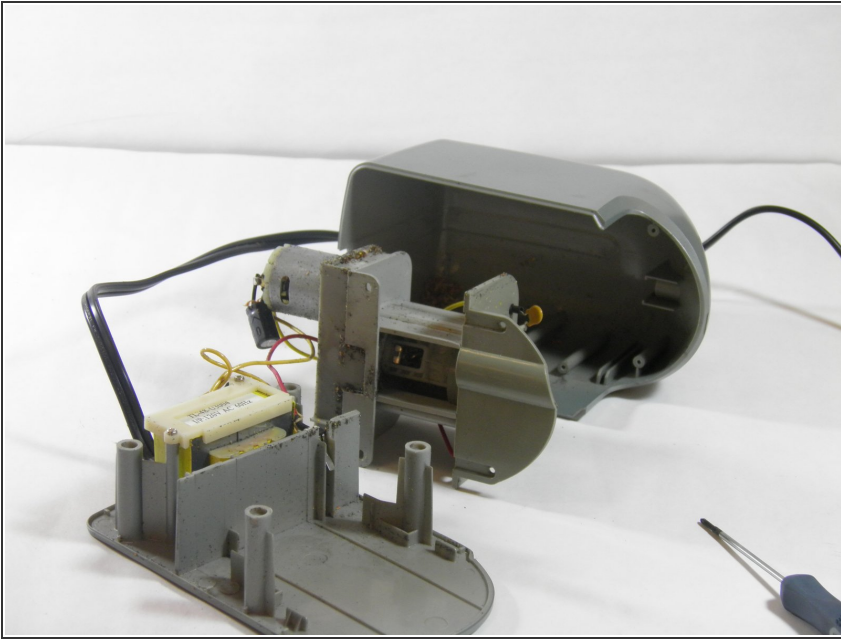
- Using a Phillips00 screwdriver, remove two 8.9mm flat edge screws from the top section of the top panel.

Step 6



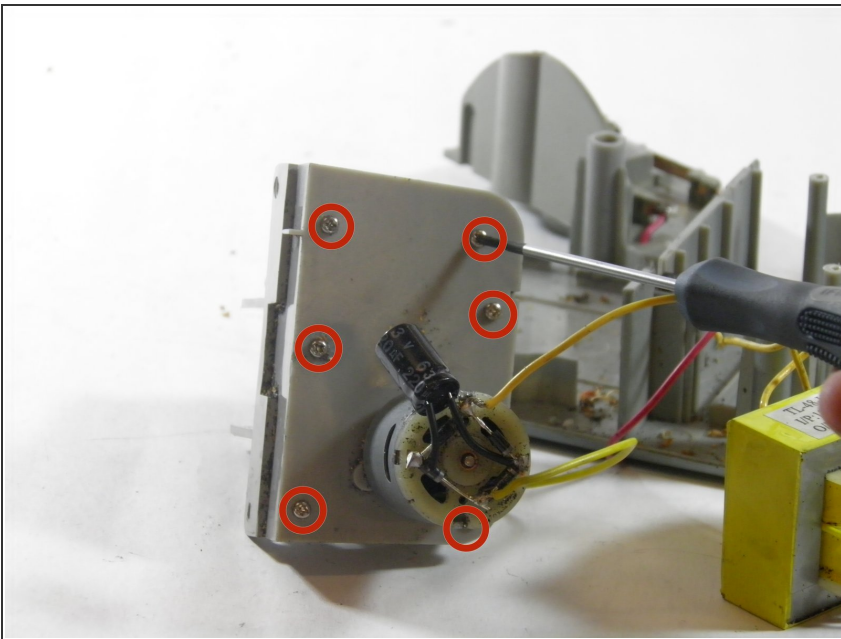
- Using a Phillips00 screwdriver, remove two 10.3mm screws from the middle section of the top panel.

Step 7



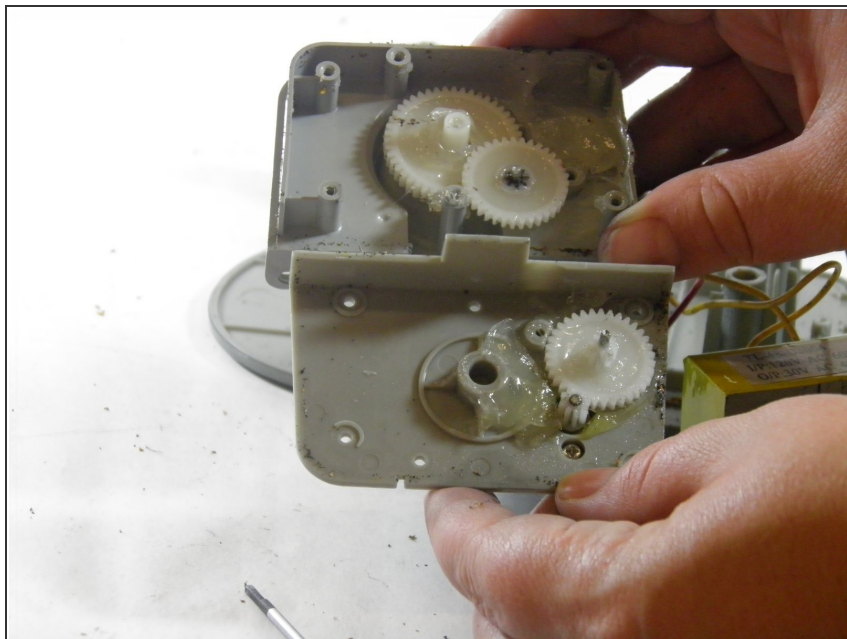
- Carefully pull the cover from the top panel and set it aside.

Step 8 — Gears



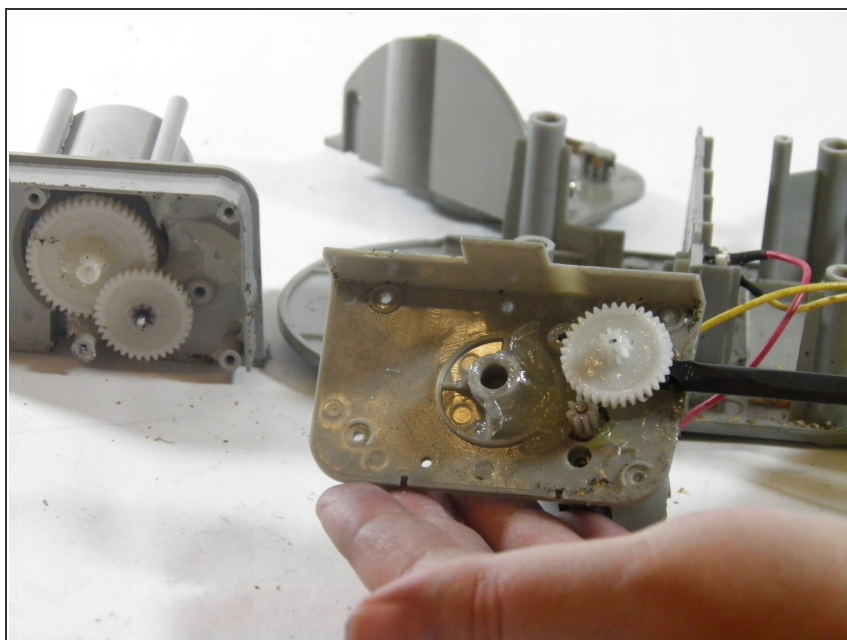
- Using a Philips 00 screwdriver, remove the six 9.87mm screws securing the gear housing.

Step 9



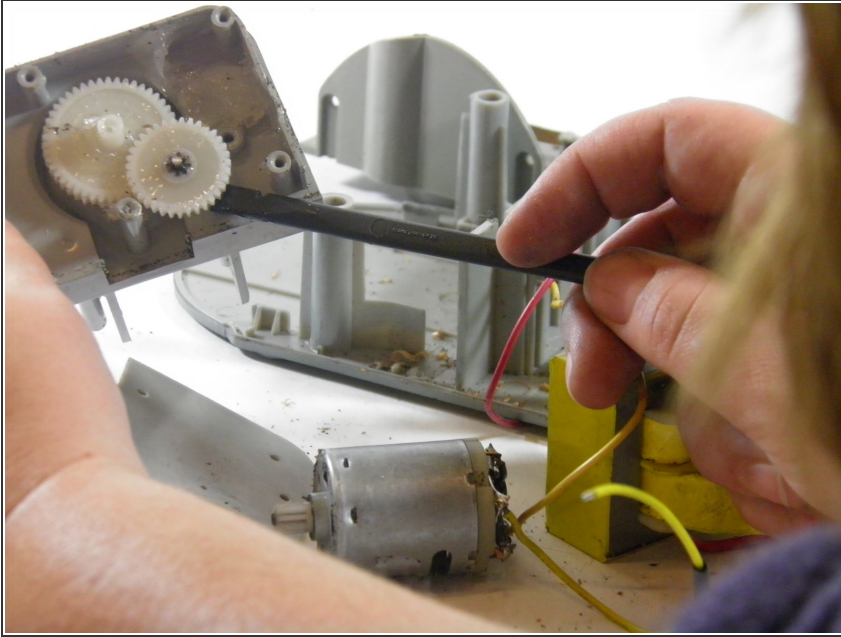
- Carefully pull apart the gear housing's panels.
- ⓘ The gears are lubricated by petroleum jelly.

Step 10



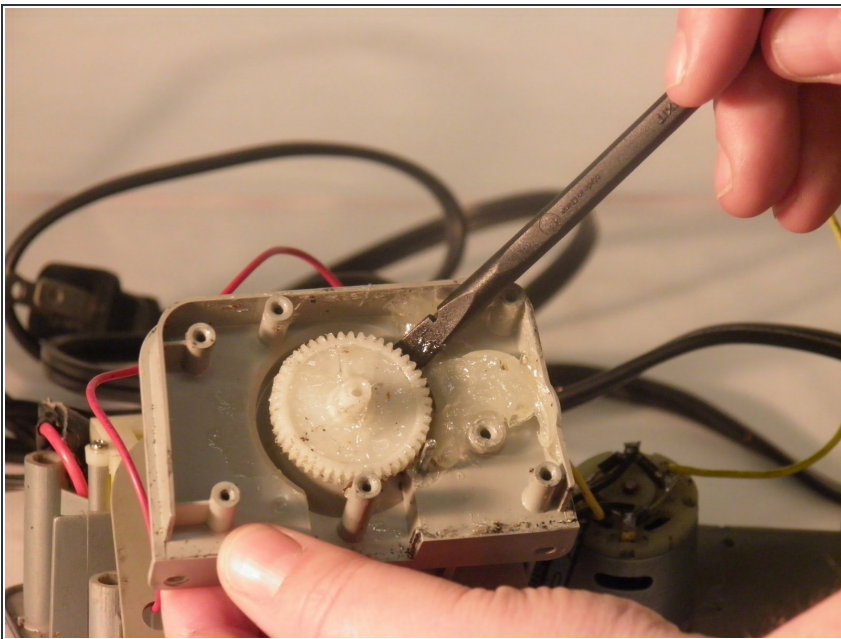
- Gently pry the first gear out of the gear housing with a spudger.
- ★ To ease reassembly, note the orientation of the gear as you pry it free.

Step 11



- Gently pry the second gear out of the gear housing with a spudger.
- ☑ To ease reassembly, note the orientation of the gear before you pry it free.

Step 12



- Gently pry the third gear out of the housing with a spudger.
- ☑ To ease reassembly, note the orientation of the gear as you pry it free.

To reassemble your device, follow these instructions in reverse order.