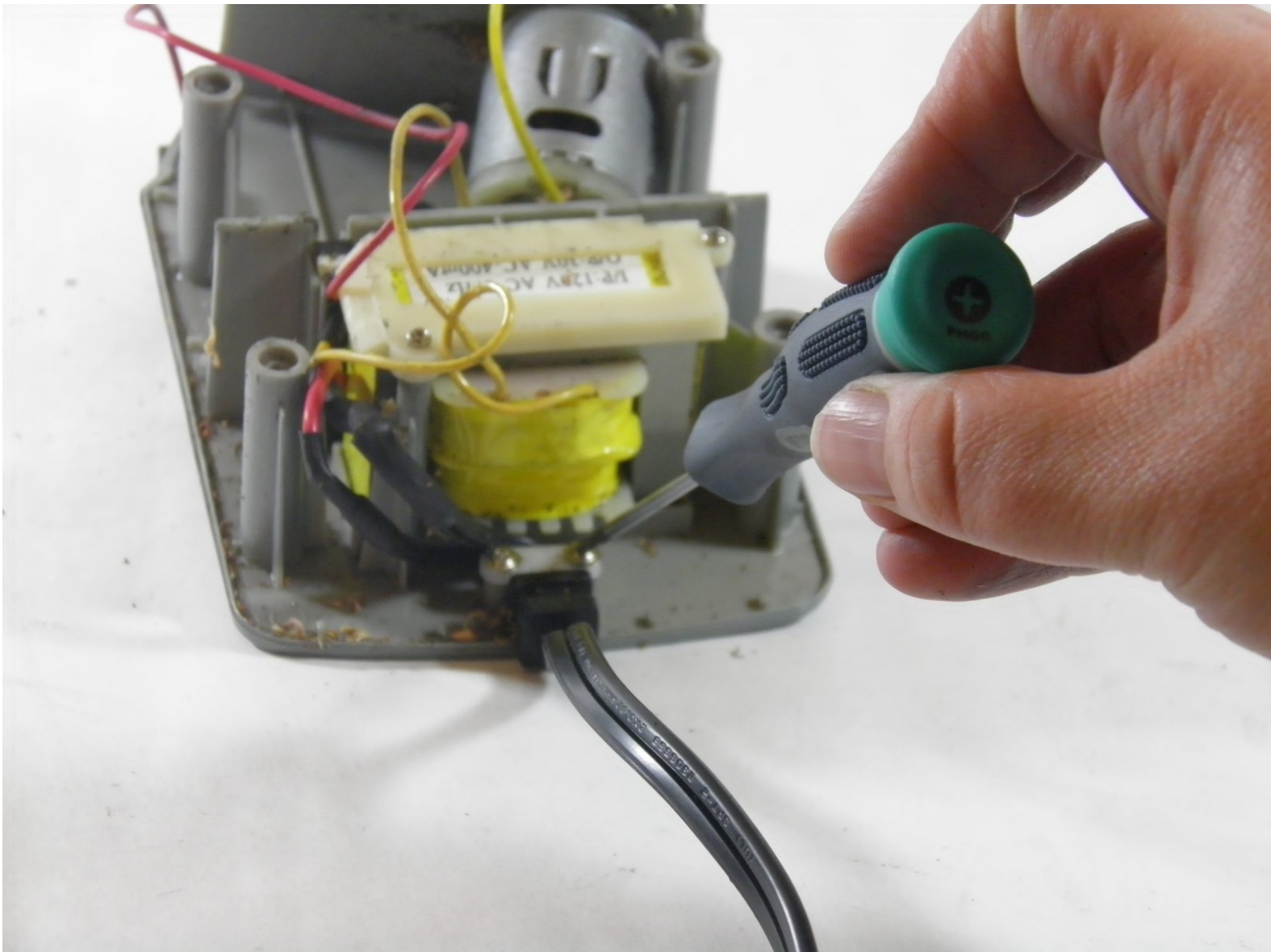




Staples 34462 Electric Pencil Sharpener Power Cord Replacement

This guide will walk you through the steps to replace the power cord in your Staples 34462 Electric Pencil Sharpener.

Written By: Jen Hawkins



INTRODUCTION

If your pencil sharpener will not power on, there may be an issue with the power cord. See our [troubleshooting guide](#) for more information on this problem. If your power cord turns out to be the problem, then follow these steps to replace it.


TOOLS:

- [Phillips #00 Screwdriver](#) (1)
 - [Utility Knife](#) (1)
-

Step 1 — Cover



- Pull out the shavings tray from the pencil sharpener.

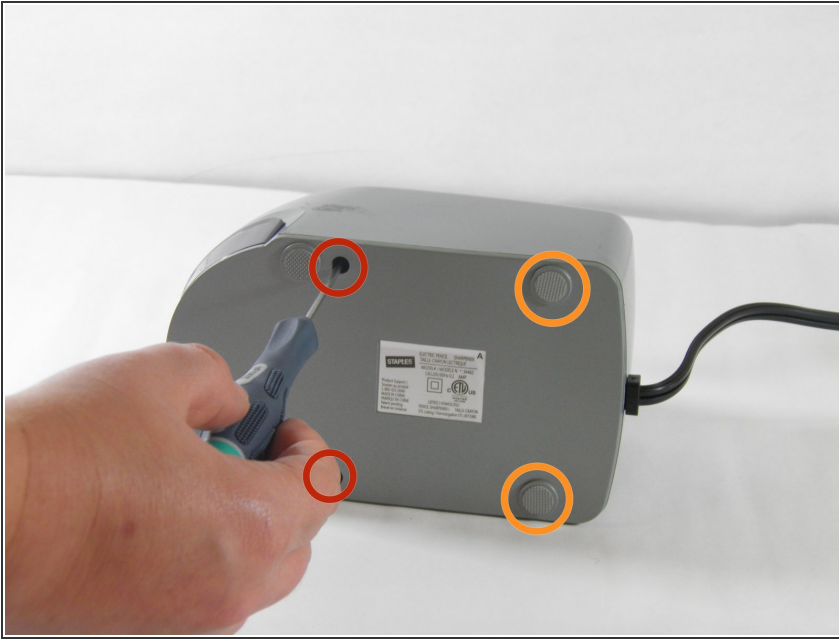
 Beware of loose pencil shavings falling on your workspace.

Step 2



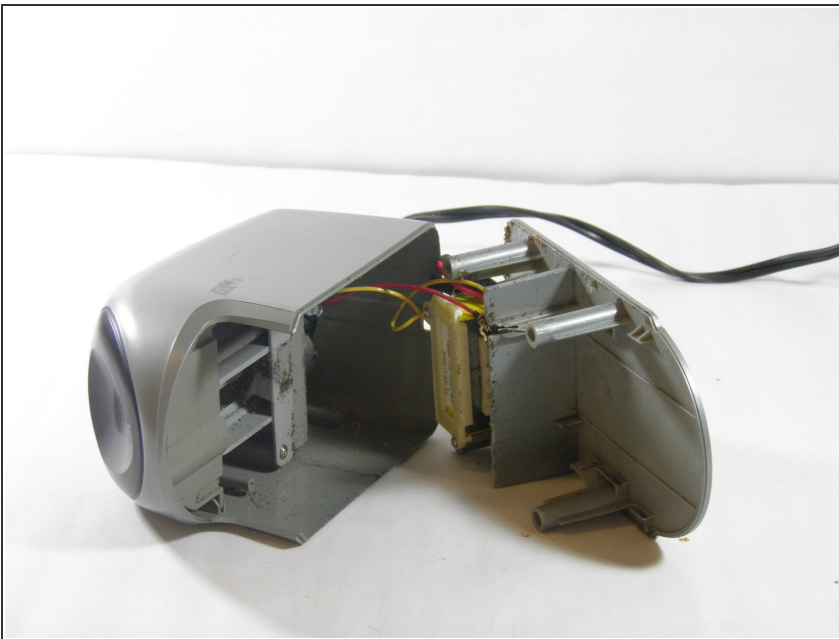
- Turn the pencil sharpener on its side.

Step 3



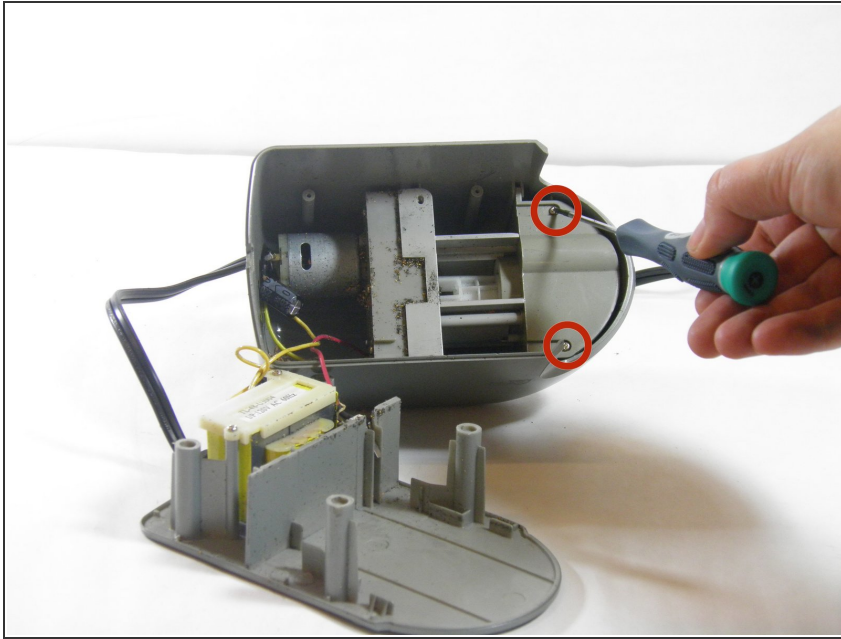
- Using a Phillips00 screwdriver, remove the two front 11.6mm screws.
 - Using the plastic opening tool, remove the back plastic feet.
 - After removing the back plastic feet, using a Phillips 00 screwdriver, remove the two back 11.6mm screws.
- i** The hole is deeper than you may think. It may take some time to get the screwdriver to click in.

Step 4



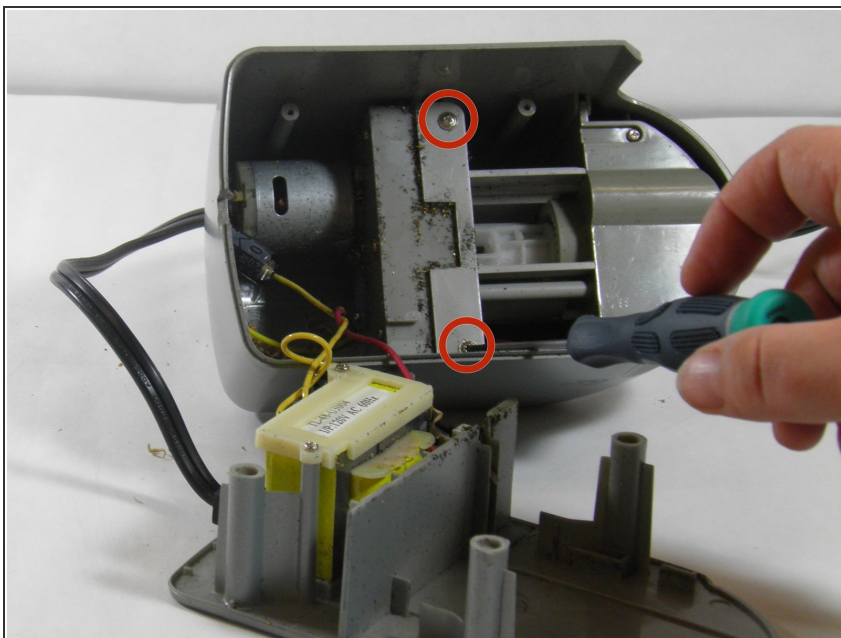
- Carefully pull apart the bottom panel from the top panel.
- !** Be careful not to pull too forcefully as the panels are connected by wires.
- !** Beware of pencil shavings falling out onto your workspace.

Step 5



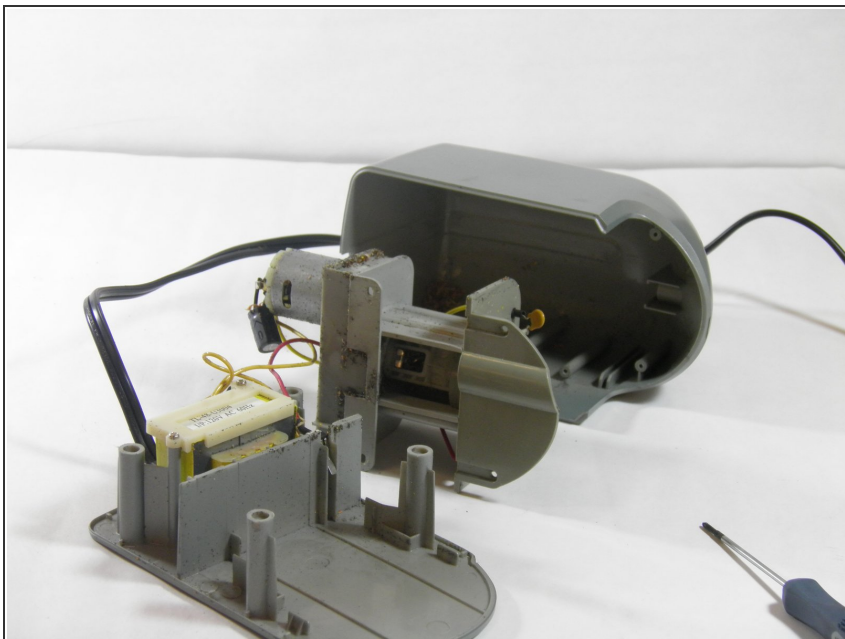
- Using a Phillips00 screwdriver, remove two 8.9mm flat edge screws from the top section of the top panel.

Step 6



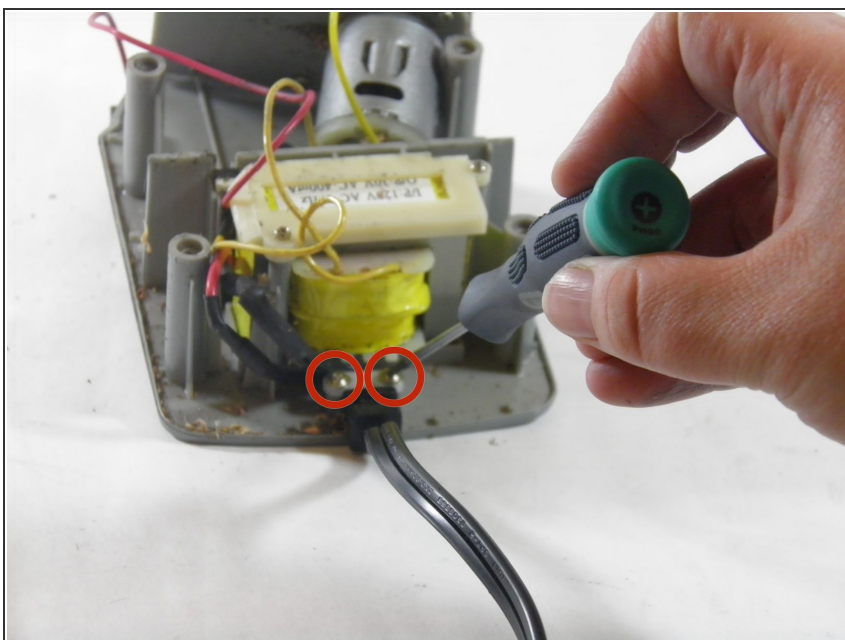
- Using a Phillips00 screwdriver, remove two 10.3mm screws from the middle section of the top panel.

Step 7



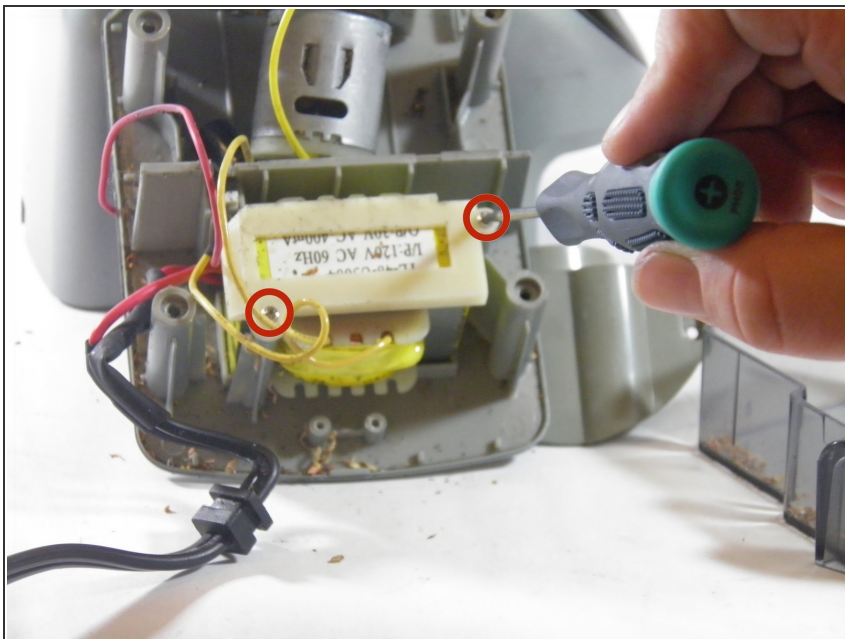
- Carefully pull the cover from the top panel and set it aside.

Step 8 — Power Cord



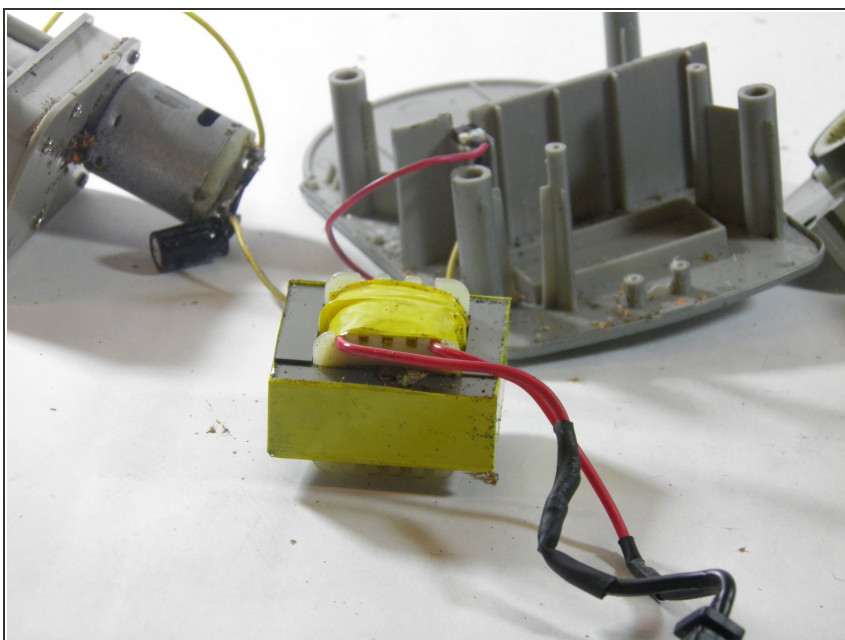
- Orient the panel with the power cord so that it is facing you.
- Using a Phillips00 screwdriver, remove the two flat head 8.95mm screws securing the cord.

Step 9



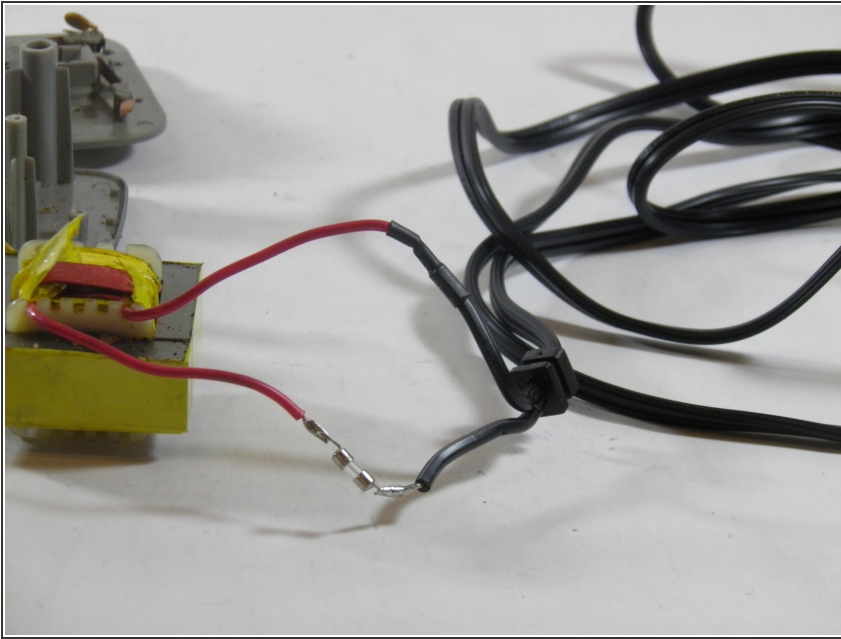
- Using a Phillips00 screwdriver, remove the two 10.42mm screws on the plastic frame securing the power component.

Step 10



- Carefully lift out the power component from the panel.

Step 11



- Use a utility knife to cut the black insulation tape from the wire.
- Cut the power cord from the wires to remove it.

To reassemble your device, follow these instructions in reverse order.