

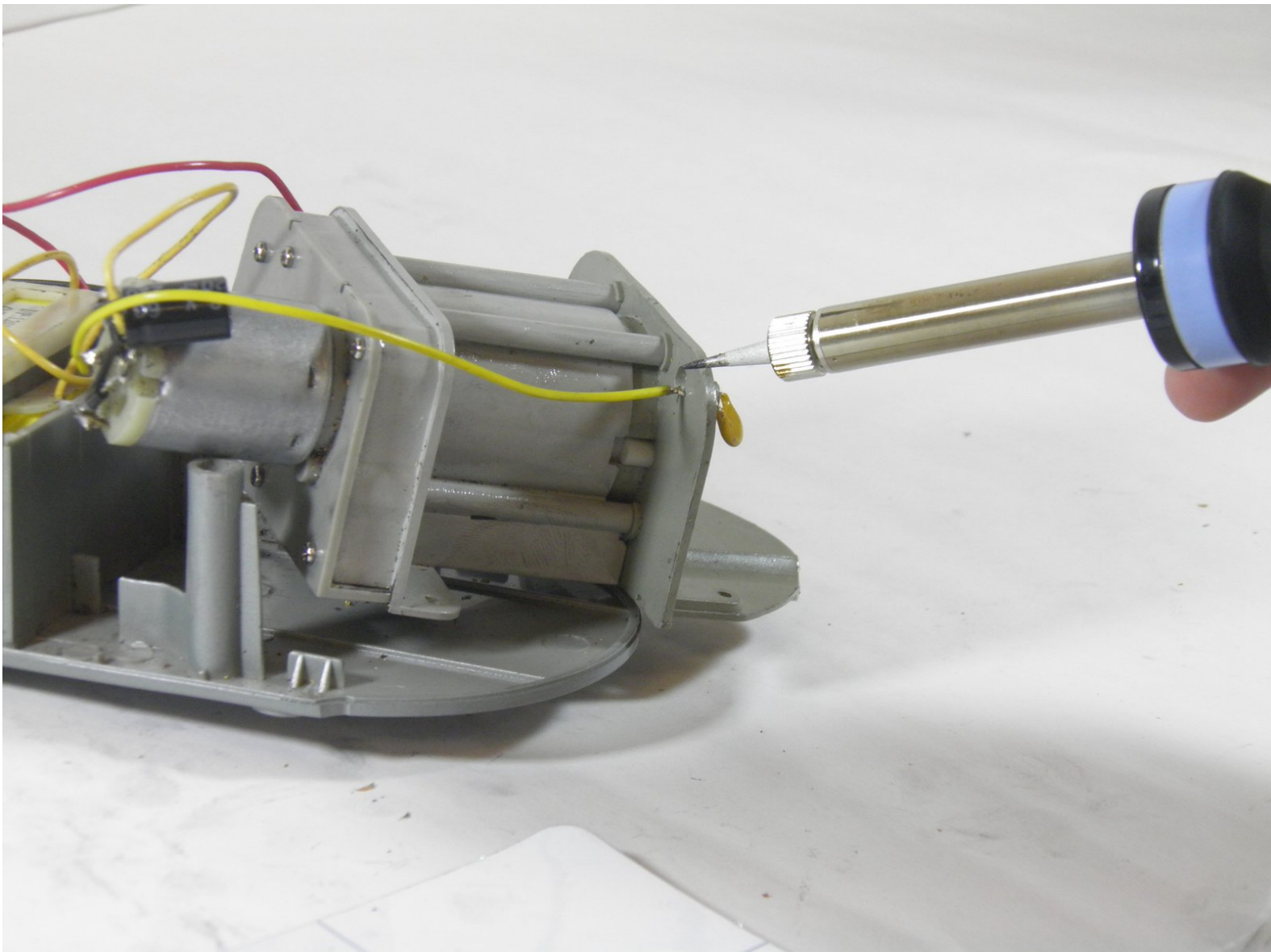


Staples 34462 Electric Pencil Sharpener

Sensor Wire Replacement

This guide will walk you through repairing the sensor wire in your Staples 34462 Electric Pencil Sharpener.

Written By: Jen Hawkins



INTRODUCTION

If your pencil sharpener is not turning on when you insert a pencil, you may have a faulty sensor wire. See our [troubleshooting guide](#) for more information on this problem. If the problem is your sensor wire, then follow these steps to replace the it. This guide may require some soldering to complete. For more tips and information on soldering see iFixit's [soldering guide](#).




TOOLS:

- [Phillips #00 Screwdriver](#) (1)
 - [iFixit Opening Tools](#) (1)
 - [Soldering Iron](#) (1)
-

Step 1 — Cover



- Pull out the shavings tray from the pencil sharpener.

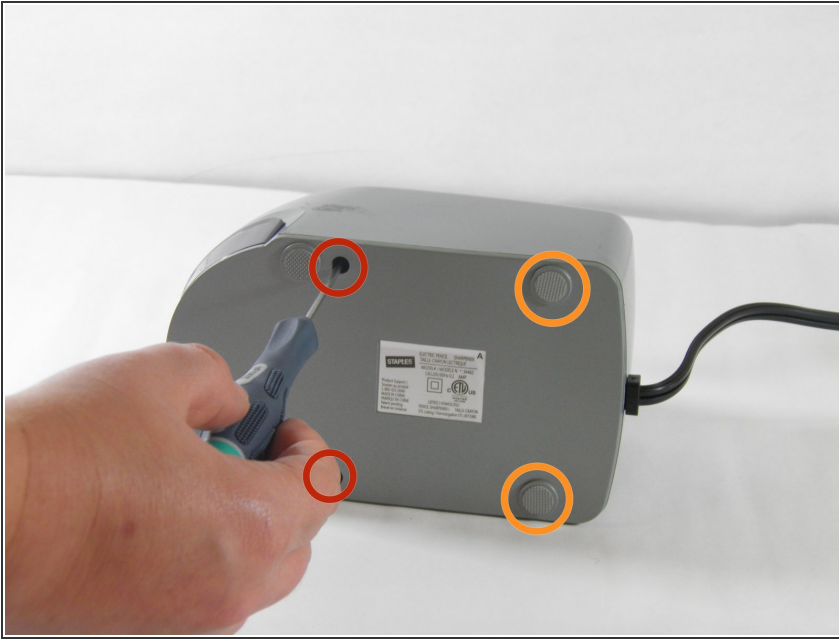
 Beware of loose pencil shavings falling on your workspace.

Step 2



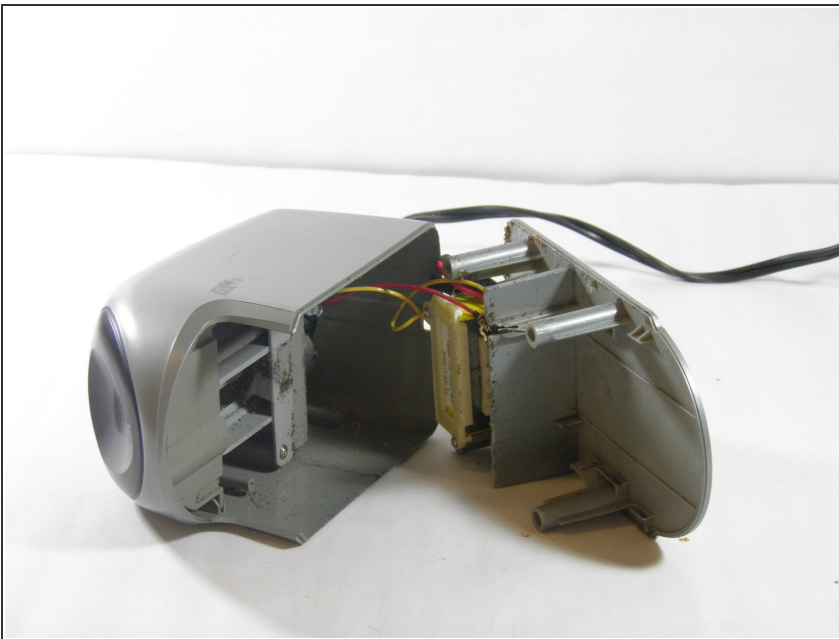
- Turn the pencil sharpener on its side.

Step 3



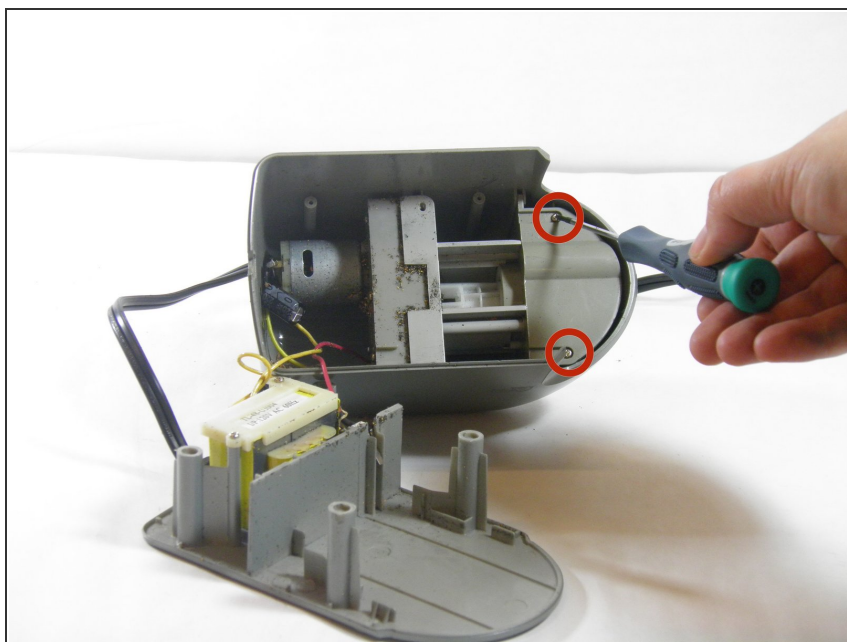
- Using a Phillips00 screwdriver, remove the two front 11.6mm screws.
 - Using the plastic opening tool, remove the back plastic feet.
 - After removing the back plastic feet, using a Phillips 00 screwdriver, remove the two back 11.6mm screws.
- i** The hole is deeper than you may think. It may take some time to get the screwdriver to click in.

Step 4



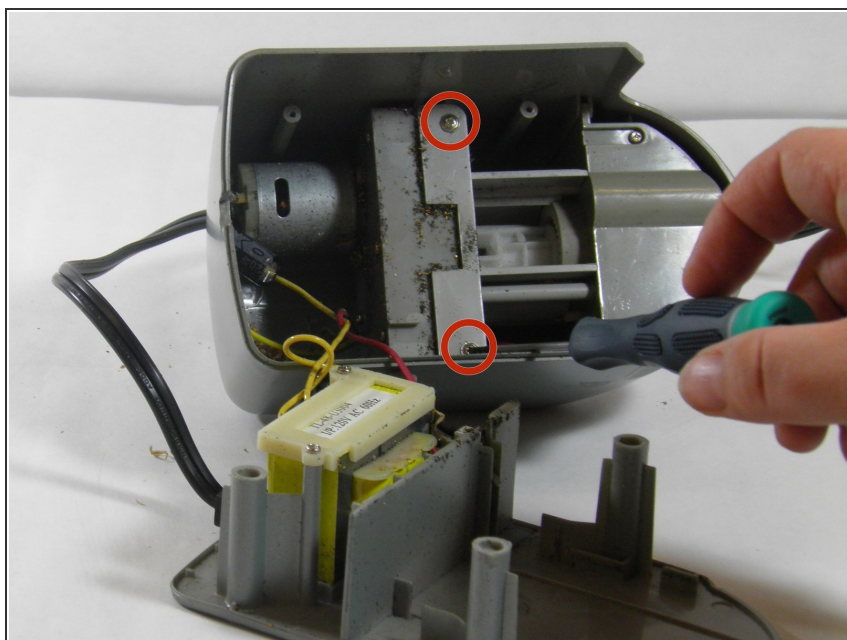
- Carefully pull apart the bottom panel from the top panel.
- !** Be careful not to pull too forcefully as the panels are connected by wires.
- !** Beware of pencil shavings falling out onto your workspace.

Step 5



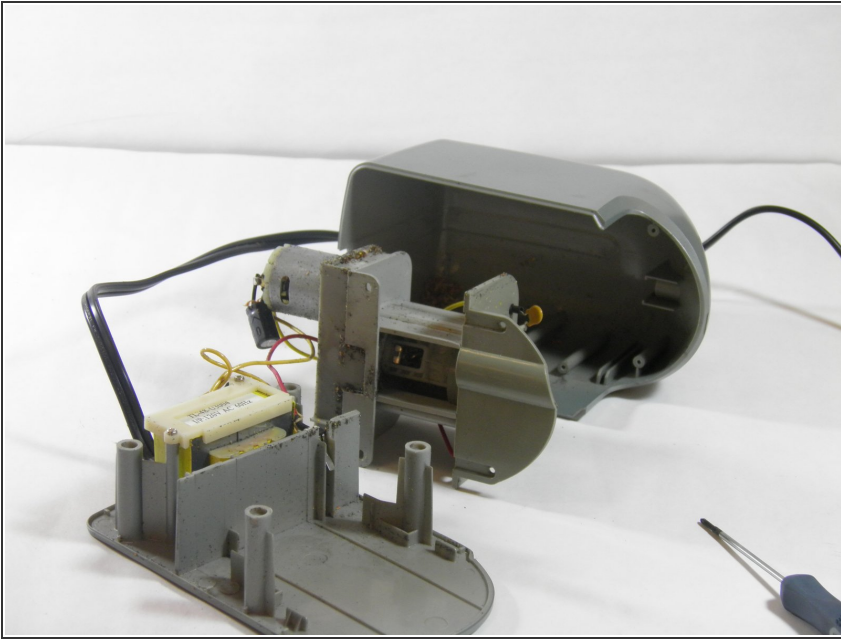
- Using a Phillips00 screwdriver, remove two 8.9mm flat edge screws from the top section of the top panel.

Step 6



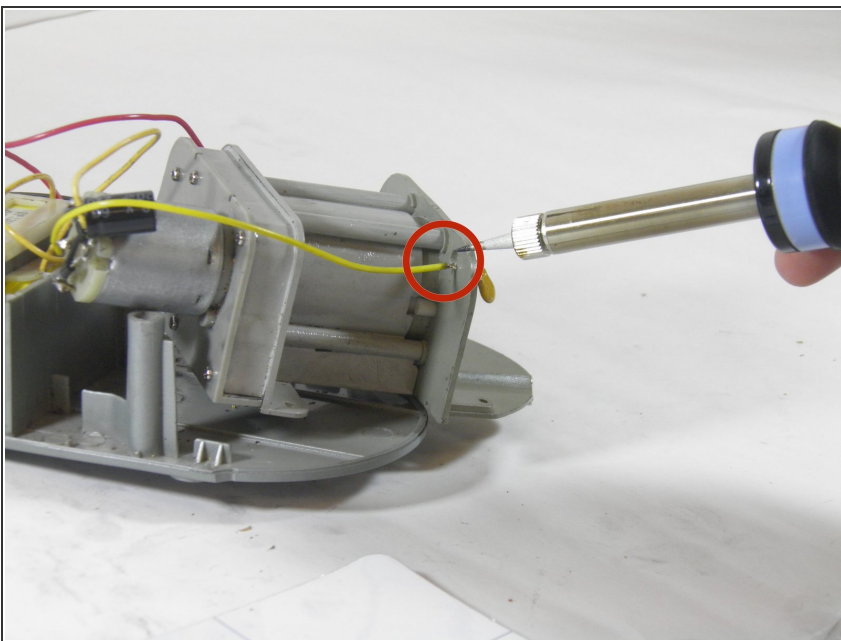
- Using a Phillips00 screwdriver, remove two 10.3mm screws from the middle section of the top panel.

Step 7



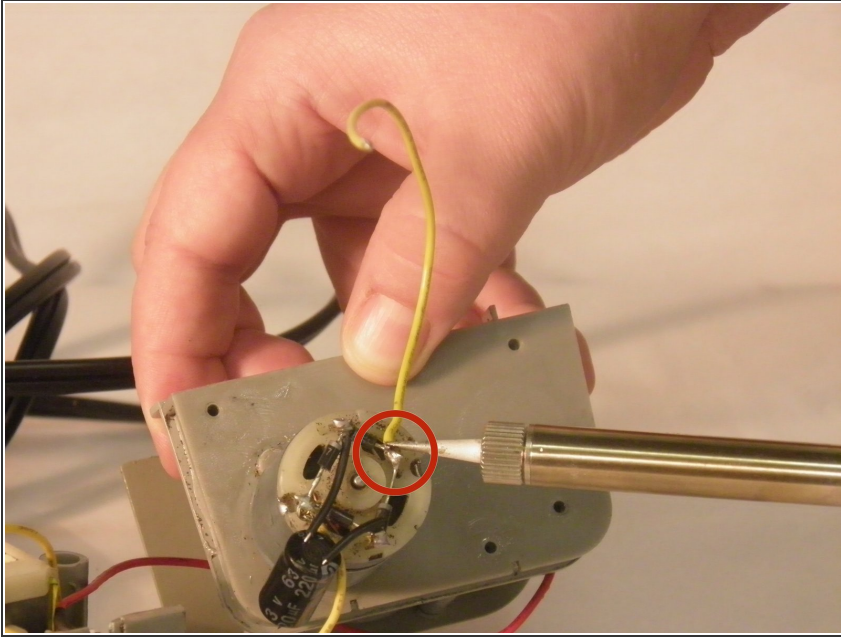
- Carefully pull the cover from the top panel and set it aside.

Step 8 — Sensor Wire



- Orient the top panel so the sensor wire's electrical connection is visible.
- Using a soldering iron, de-solder the sensor wire from the sensor bracket. Be careful to avoid melting the plastic components while soldering.
- ⓘ This step requires soldering. See iFixit's [soldering guide](#) for more tips and information.

Step 9



- Using a soldering iron, de-solder the sensor wire from the electric A/C motor.
- ⓘ Follow the wire back to the motor so you do not de-solder the incorrect wire.

To reassemble your device, follow these instructions in reverse order.