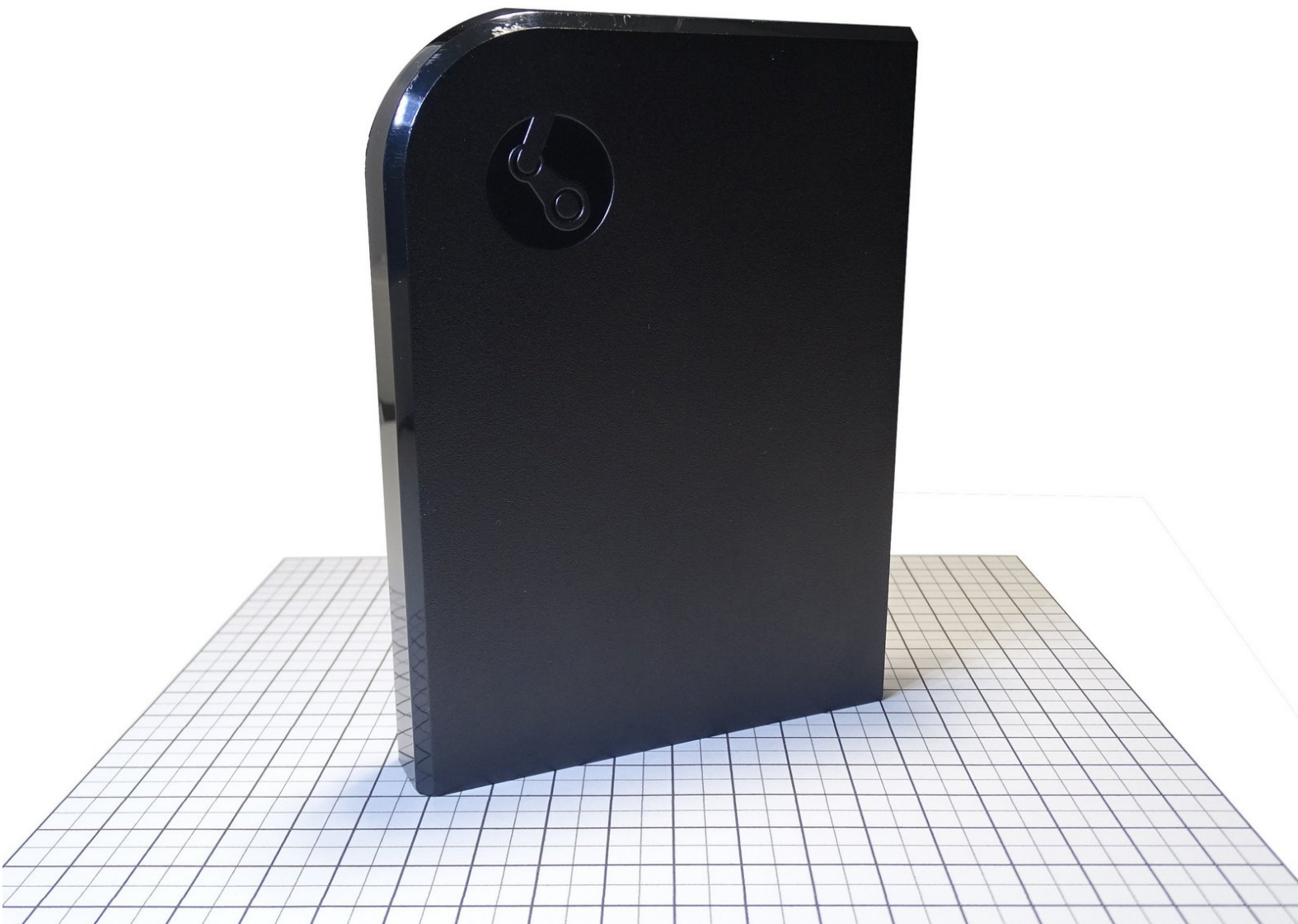




Steam Link Disassembly

We'll disassemble the Steam Link to see what's inside

Written By: Jorys Paulin (Jorys_Paulin)



INTRODUCTION

This guide will walk you through the disassembly of the Steam Link device made by Valve from 2015 to 2018

TOOLS:

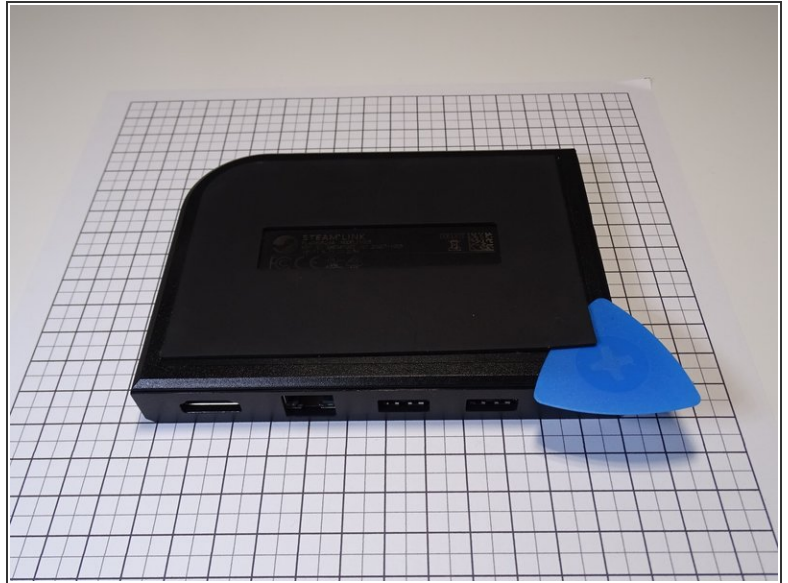
- [iFixit Opening Picks set of 6](#) (1)
 - [T6 Torx Screwdriver](#) (1)
-

Step 1 — Starting up



- Start by unplugging your device
 - Power cord
 - Ethernet
 - HDMI

Step 2 — Removing the rubber bottom



- Start by removing the rubber bottom using the **Guitar Pick** or the **Jimmy**

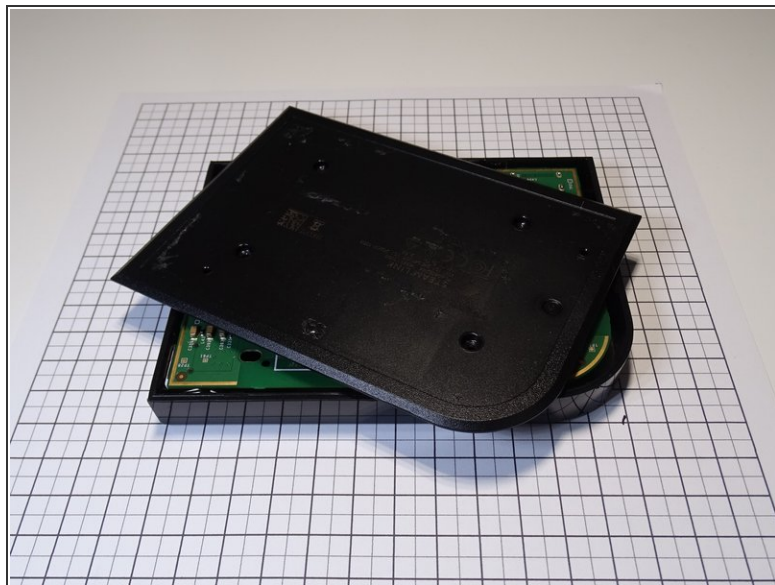
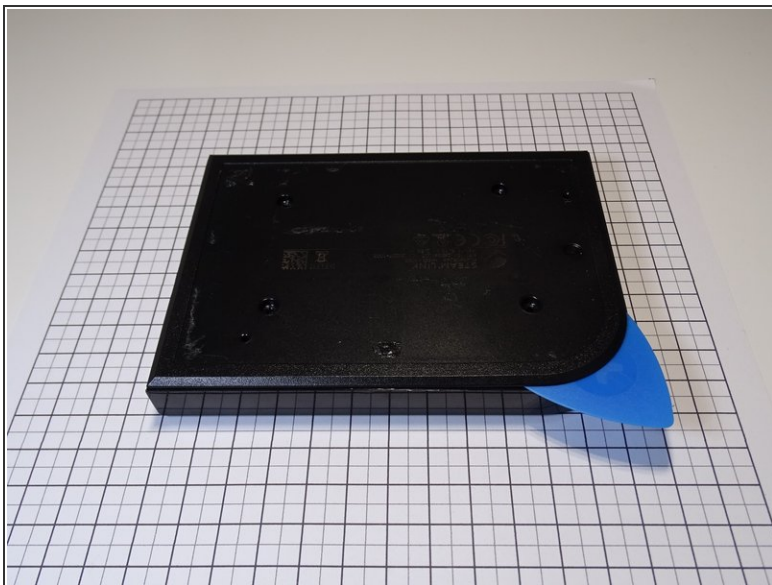
i The first time, the adhesive may be difficult to remove

Step 3 — Removing the screws



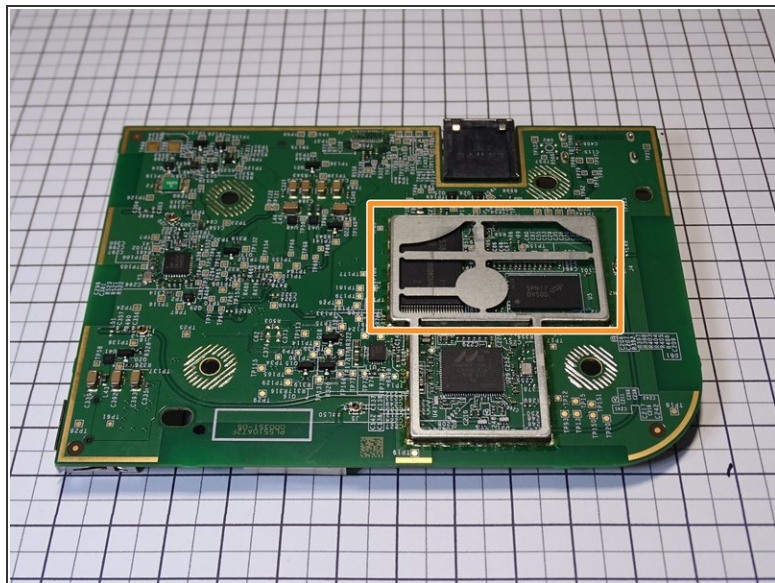
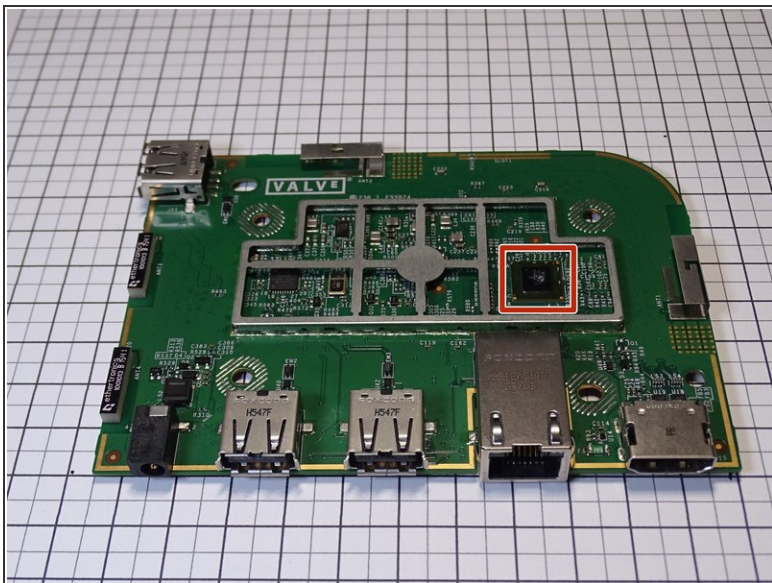
- Remove the screws using a Torxx 6 bit

Step 4 — Opening the lid



- Open-up the bottom lid using guitar pics
- ⓘ The first time you open it, it might be difficult to open. Start by reaching the rounded, bottom-right corner

Step 5 — Main board inspection



- Marvel ArmV7 CPU
- Vivante GC1000 GPU

To reassemble your device, follow the steps in the opposite order