



SteelSeries Apex 64145 Gel Membrane Replacement

Replace your gel membrane to reinstall full functionality of your keyboard and fix keys that doesn't respond.

Written By: Zwe Phone Shein



INTRODUCTION

The gel membrane is crucial to the responsiveness of the keys so the functionality of the keyboard itself relies heavily on the gel membrane. You will be removing the back of the keyboard in order to remove and replace the gel membrane.

TOOLS:

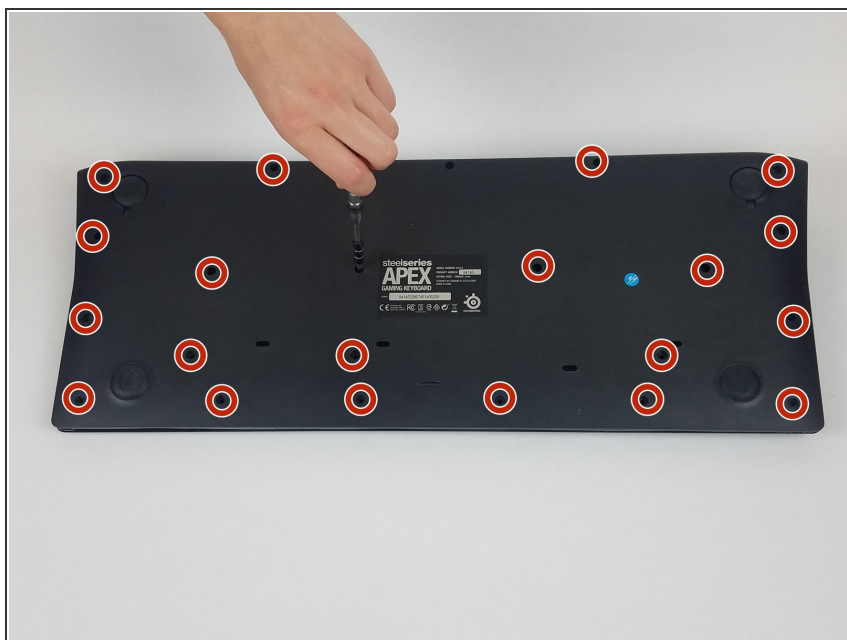
- [64 Bit Driver Kit](#) (1)
 - [Metal Spudger](#) (1)
-

Step 1 — Gel Membrane



- Unplug the keyboard from the computer.

Step 2



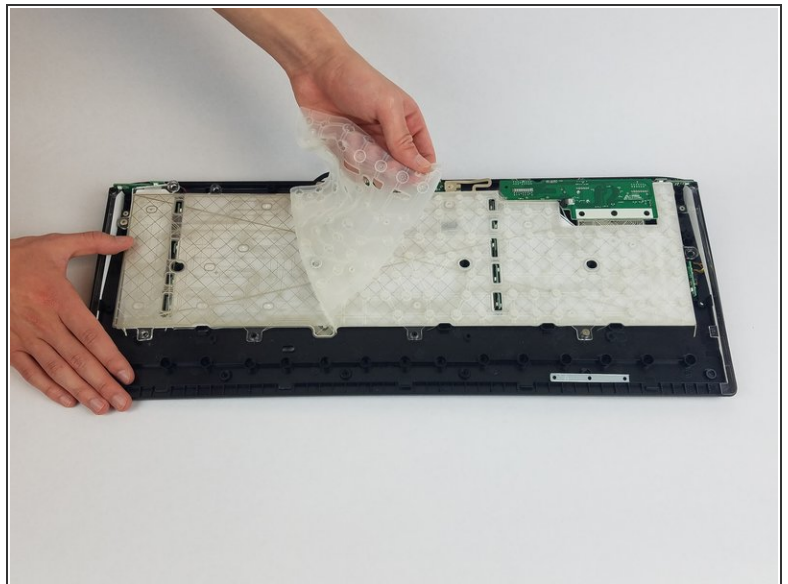
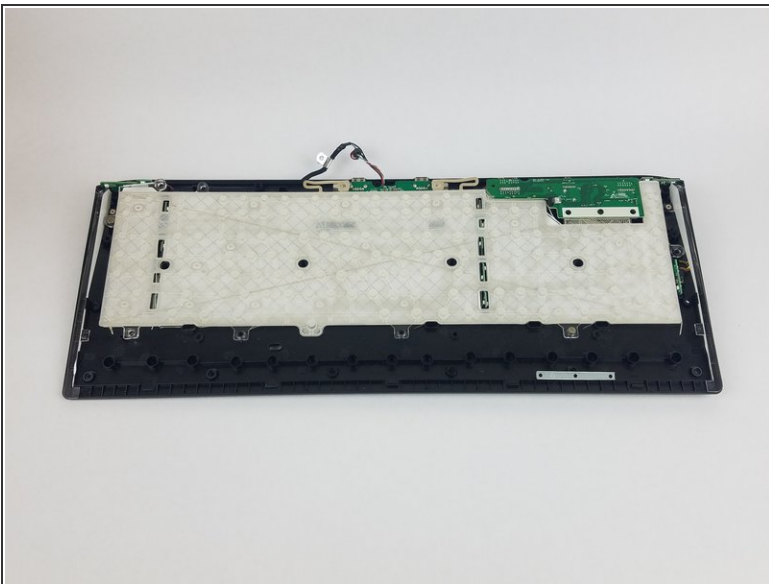
- Unscrew the twenty black 4.5 mm Phillips #1 screws on the back of the keyboard.

Step 3



- Pry open the back of the keyboard.

Step 4



- Remove the gel membrane.

To reassemble your device, follow these instructions in reverse order.