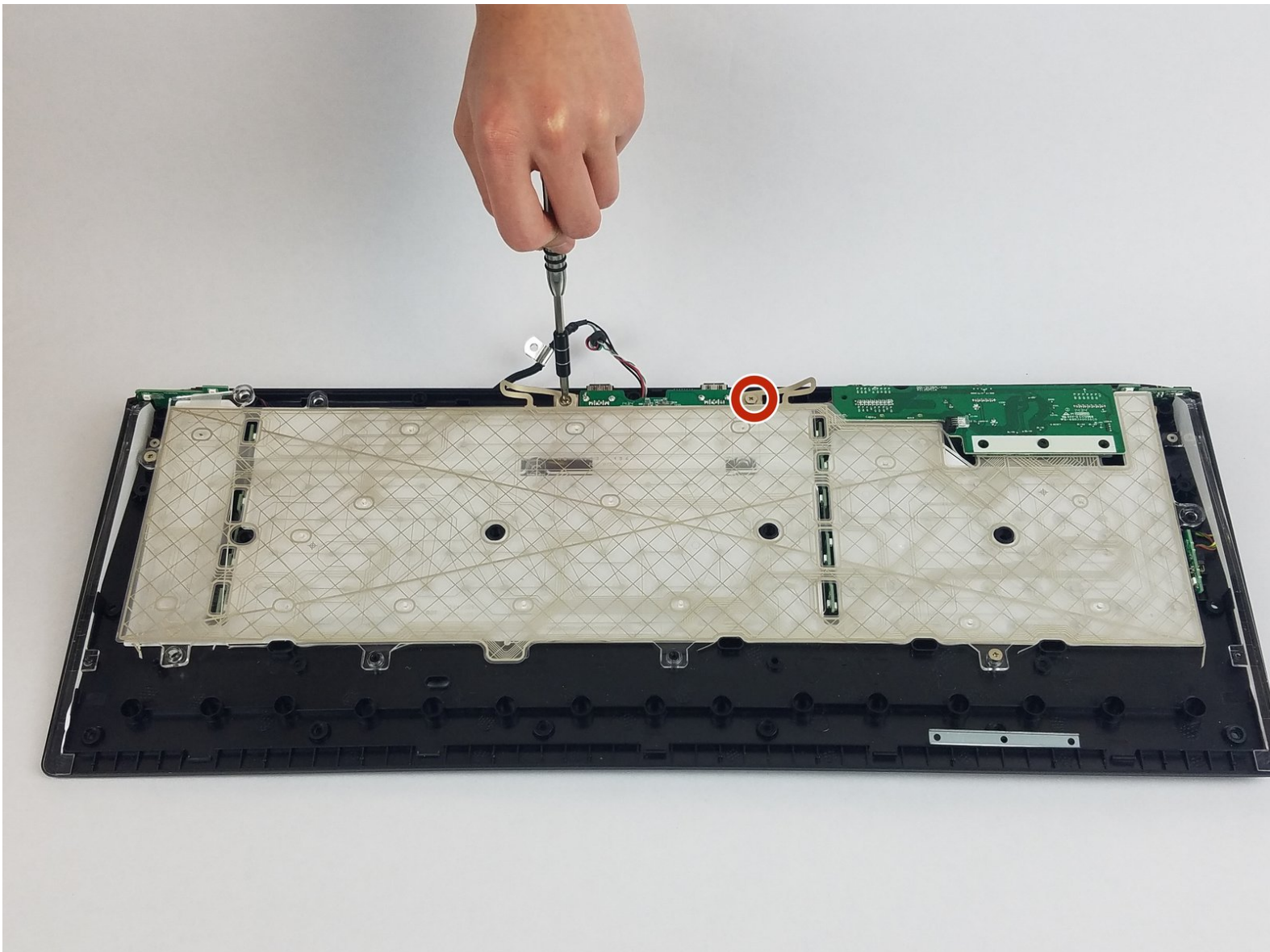




SteelSeries Apex 64145 LED Replacement

Replace your broken LED lights in order for them to light up again.

Written By: Zwe Phone Shein



INTRODUCTION

You will be removing the back of the keyboard in order to replace broken LED lights. This is to ensure the keys from lighting up as this is one of the key attraction of the SteelSeries keyboard.

TOOLS:

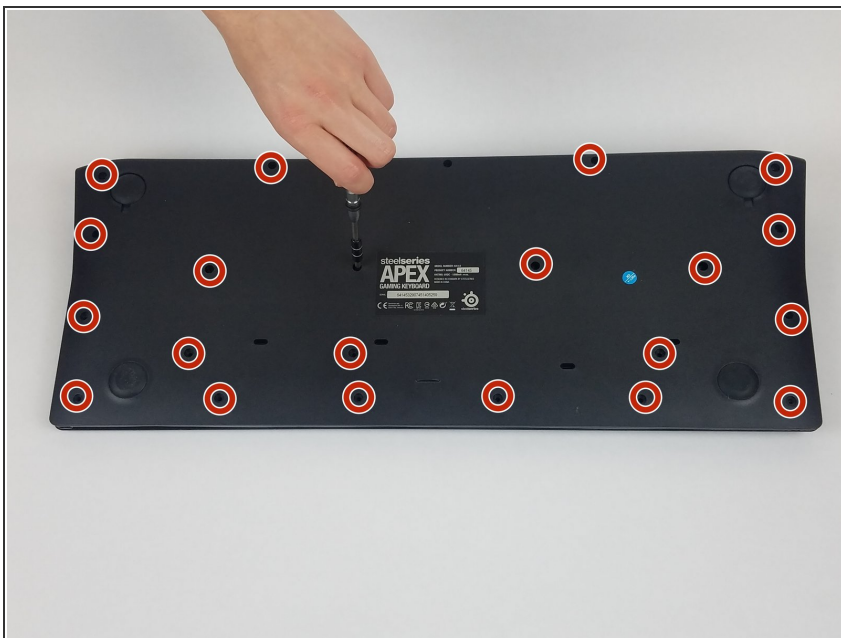
- [64 Bit Driver Kit](#) (1)
 - [Metal Spudger](#) (1)
 - [J1 Screwdriver Bit](#) (1)
-

Step 1 — Gel Membrane



- Unplug the keyboard from the computer.

Step 2



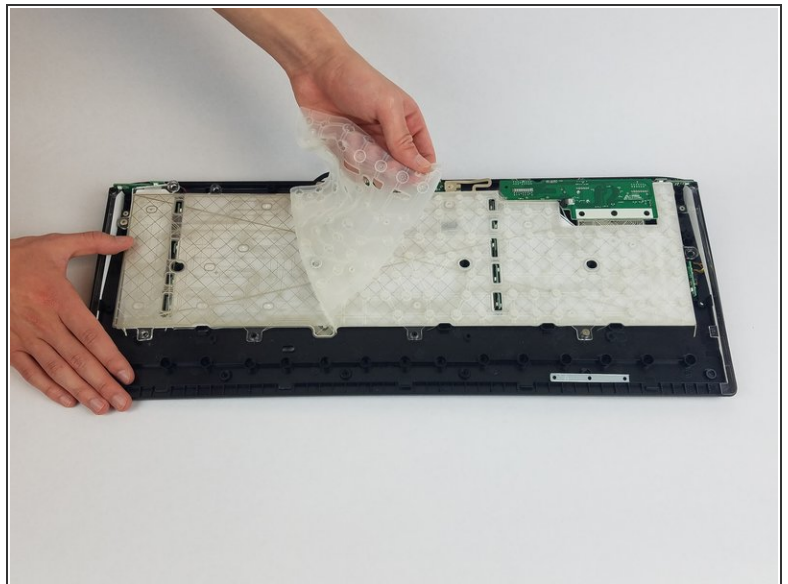
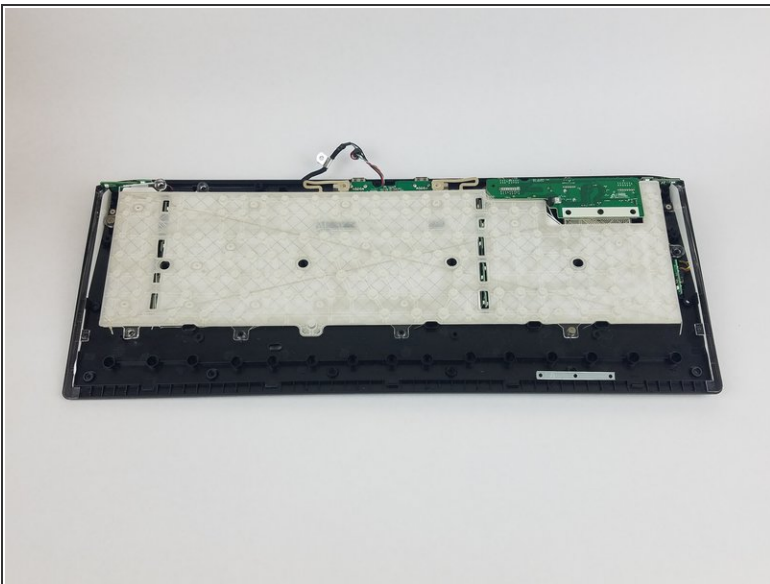
- Unscrew the twenty black 4.5 mm Phillips #1 screws on the back of the keyboard.

Step 3



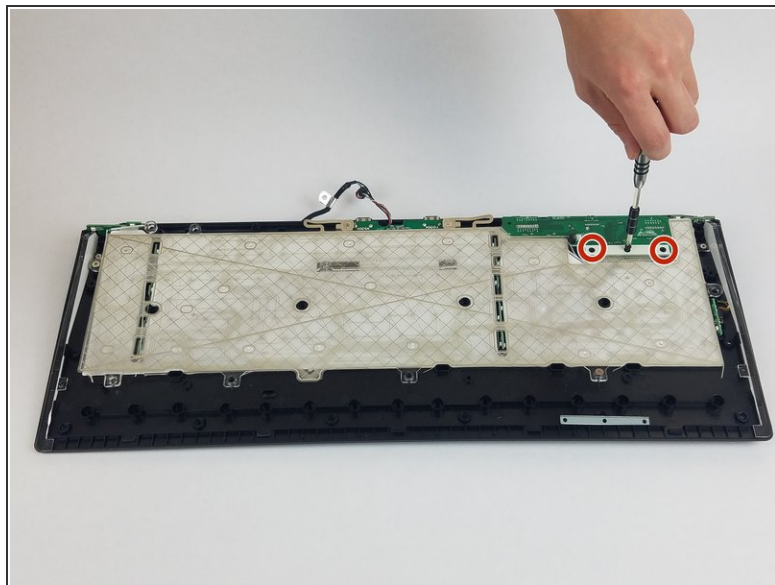
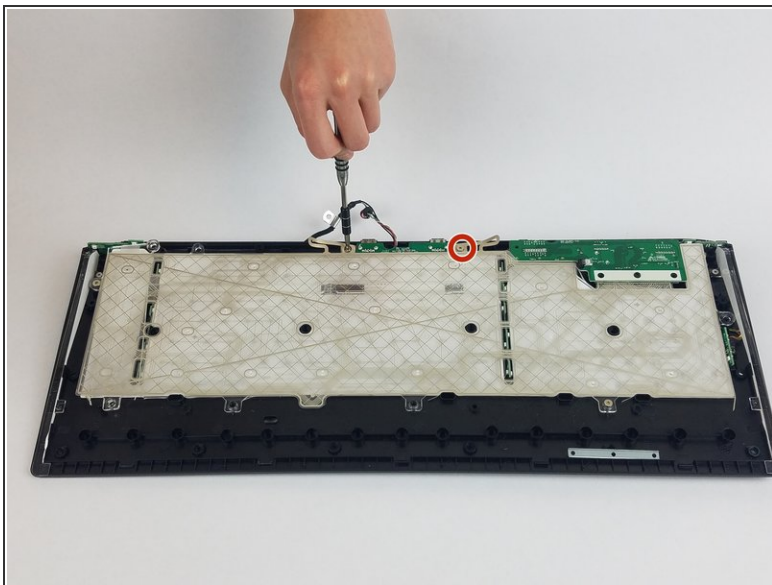
- Pry open the back of the keyboard.

Step 4



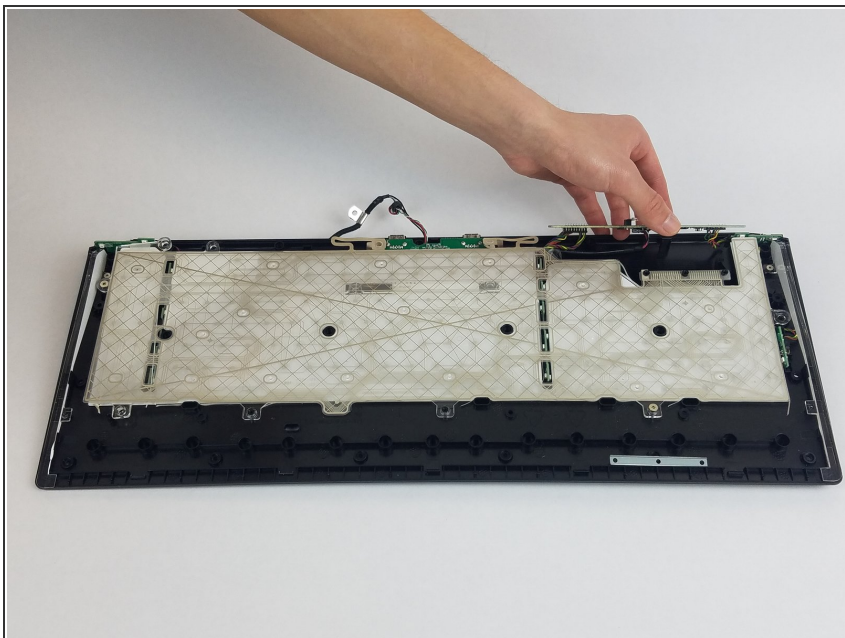
- Remove the gel membrane.

Step 5 — LED



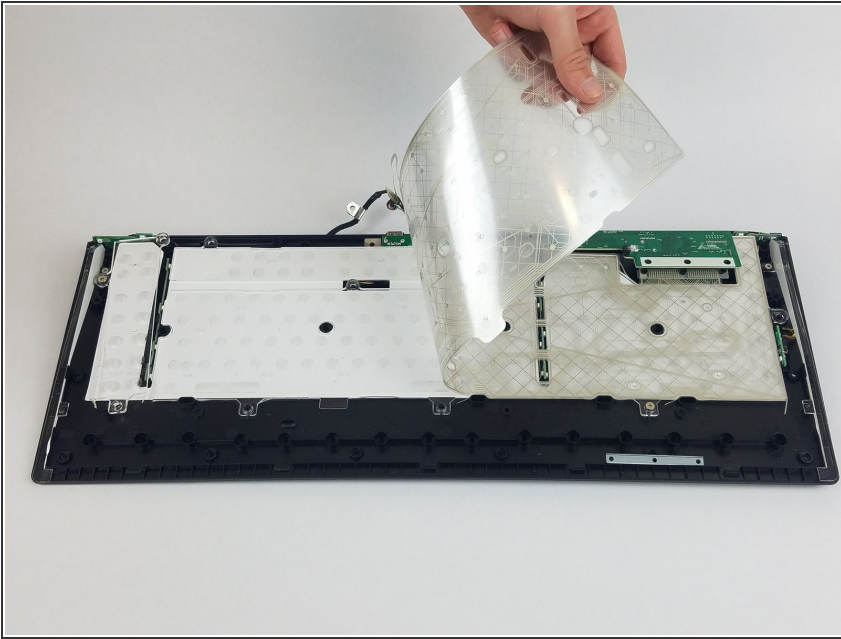
- Unscrew the two silver 4.0 mm Phillips #1 screws and the three black 6.5 mm Phillips #1 screws holding the silicone sheets.

Step 6



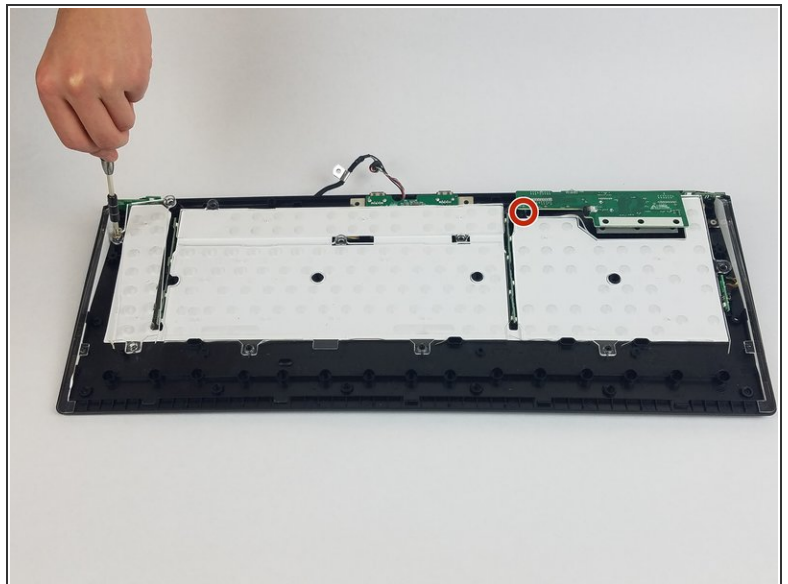
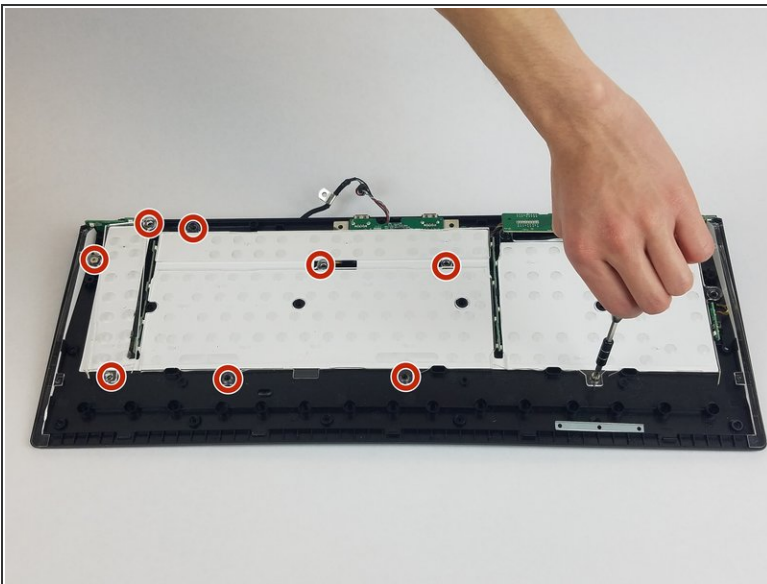
- Flip the chip slightly in order to remove the sheets.

Step 7



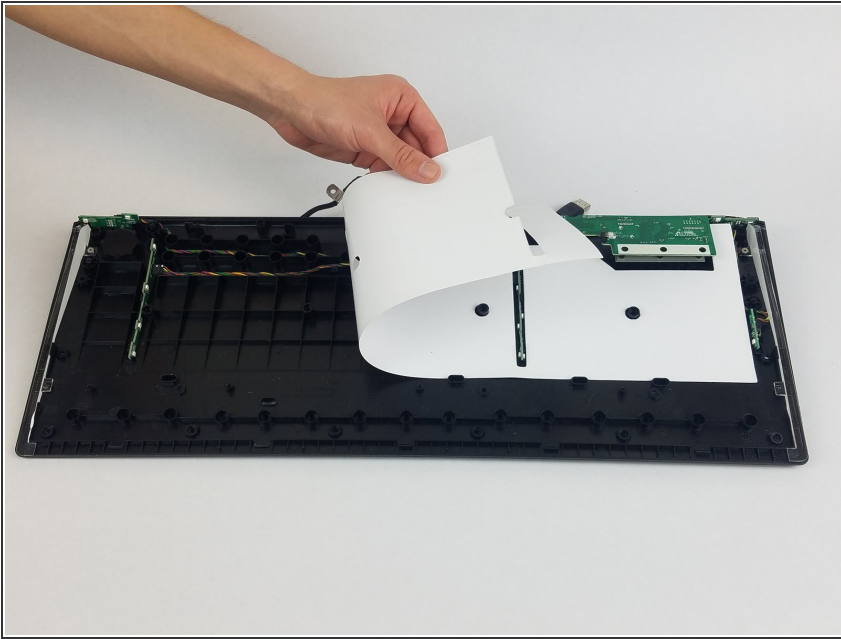
- Remove the sheets.

Step 8



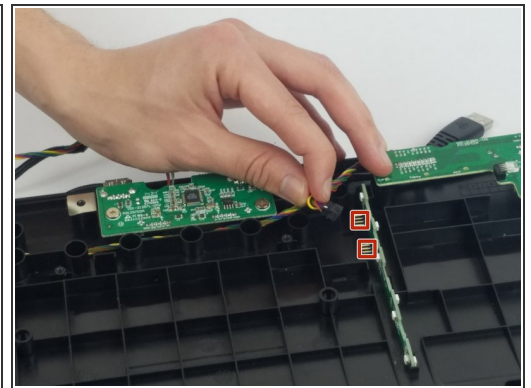
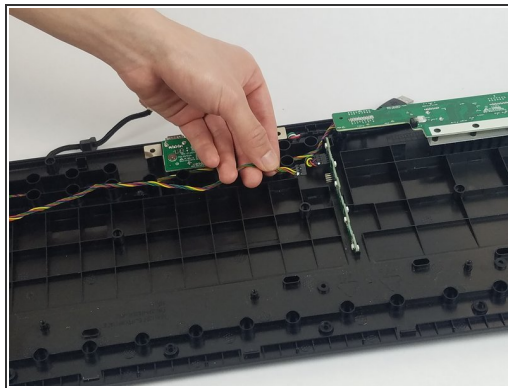
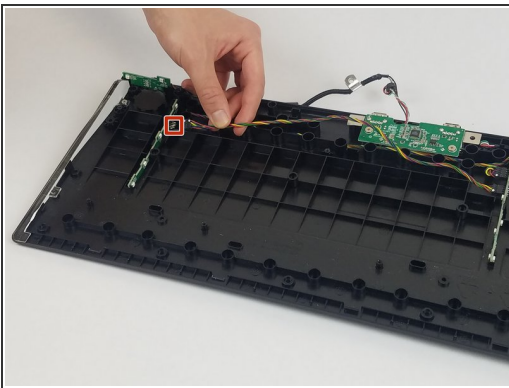
- Unscrew the two silver 4.5 mm Phillips #1 screws and the seven 5.0 mm Phillips #1 screws that deter the plastic panel from removal.

Step 9



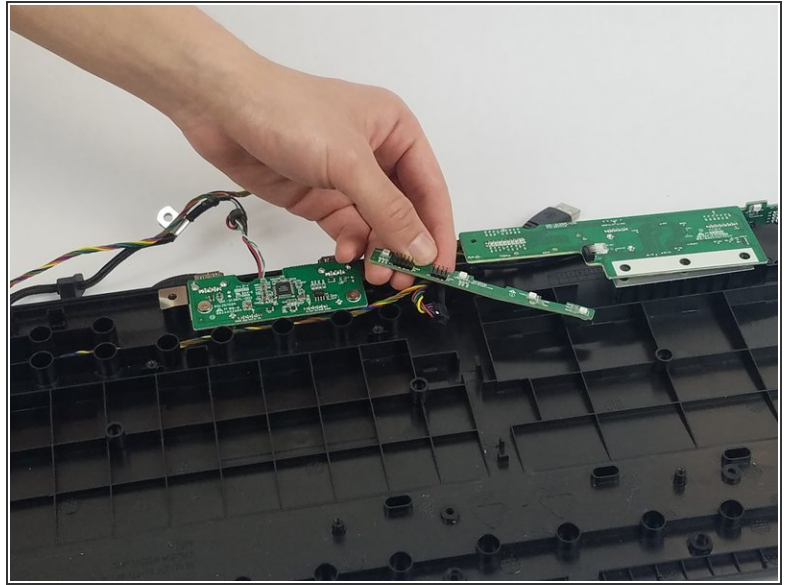
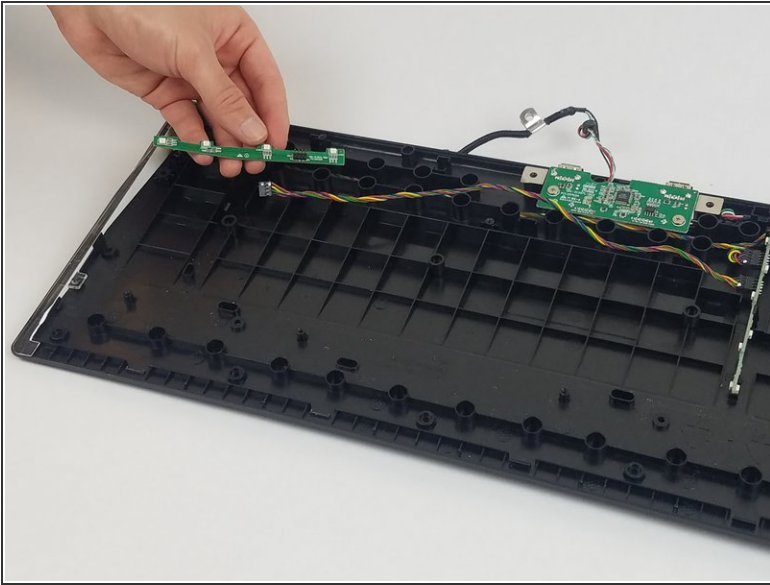
- Remove the plastic panel and the white sheet.

Step 10



- Unplug the wires connected to the LEDs.

Step 11



- Remove the LEDs.

To reassemble your device, follow these instructions in reverse order.