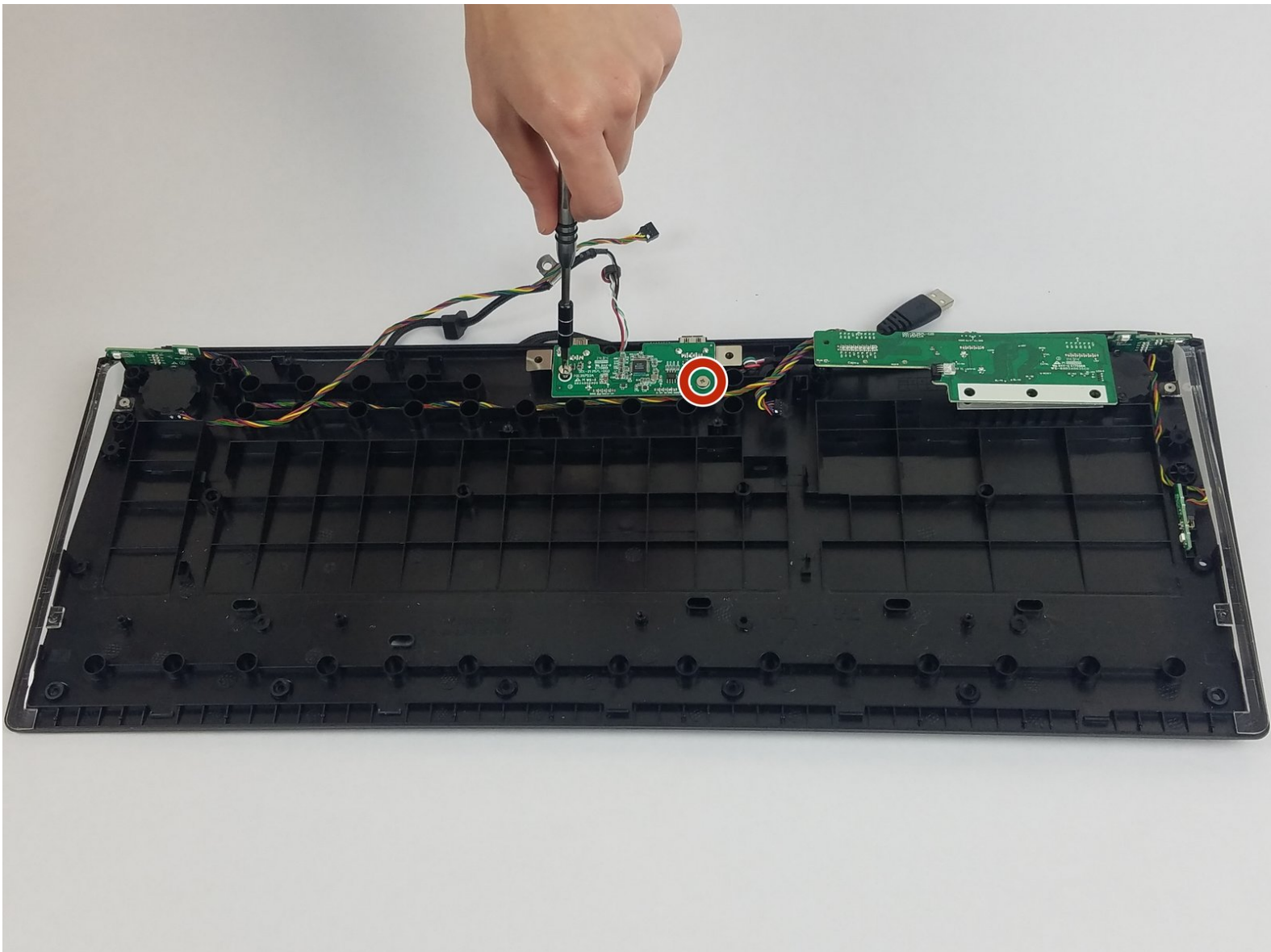




SteelSeries Apex 64145 USB Port Connector Replacement

Replace your damaged USB Port Connector to reinstate the keyboard's ability to let USB devices connect to the keyboard.

Written By: Zwe Phone Shein



This document was generated on 2019-09-22 08:09:35 AM (MST).

INTRODUCTION

The USB Port Connector allows devices such as mice and headset to connect to the keyboard instead of the computer itself. You will be removing the back of the keyboard and also the LED reflective panel in order to remove and replace the port connector.

TOOLS:

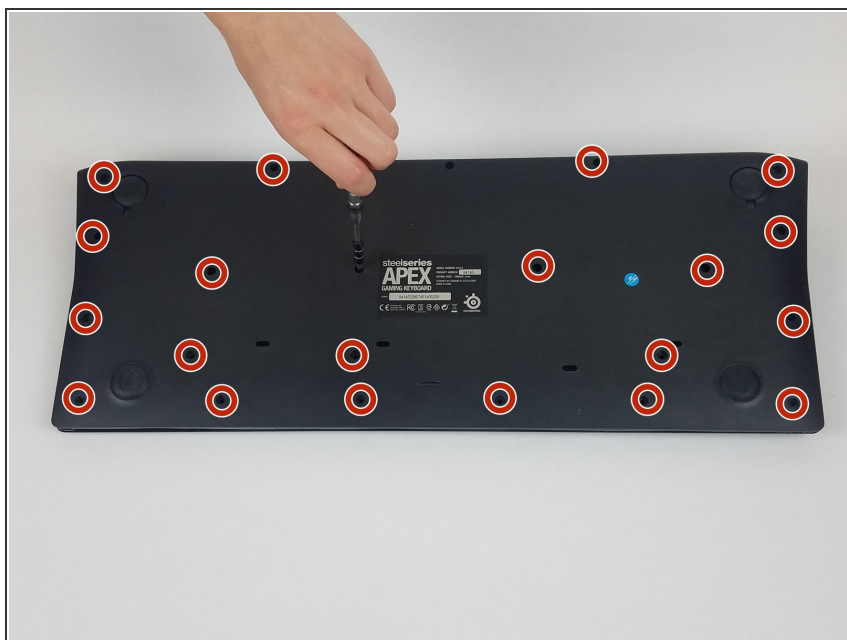
- [64 Bit Driver Kit](#) (1)
 - [Metal Spudger](#) (1)
-

Step 1 — Gel Membrane



- Unplug the keyboard from the computer.

Step 2



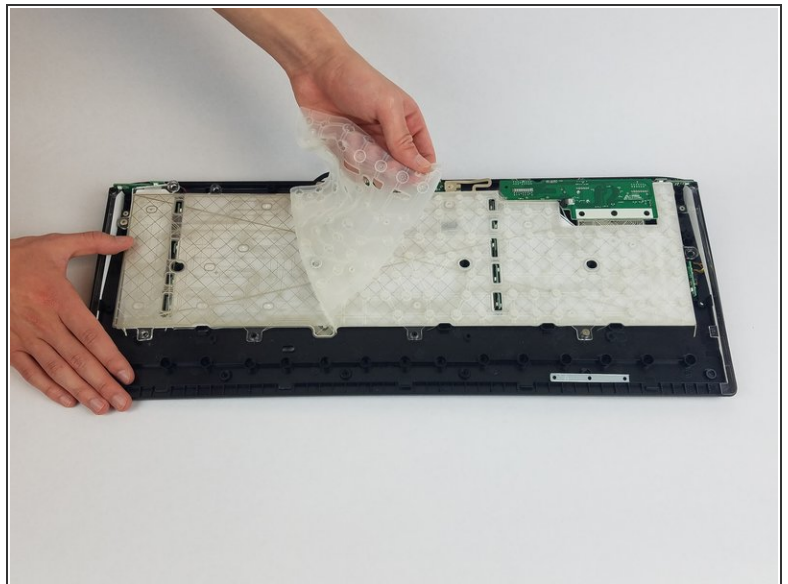
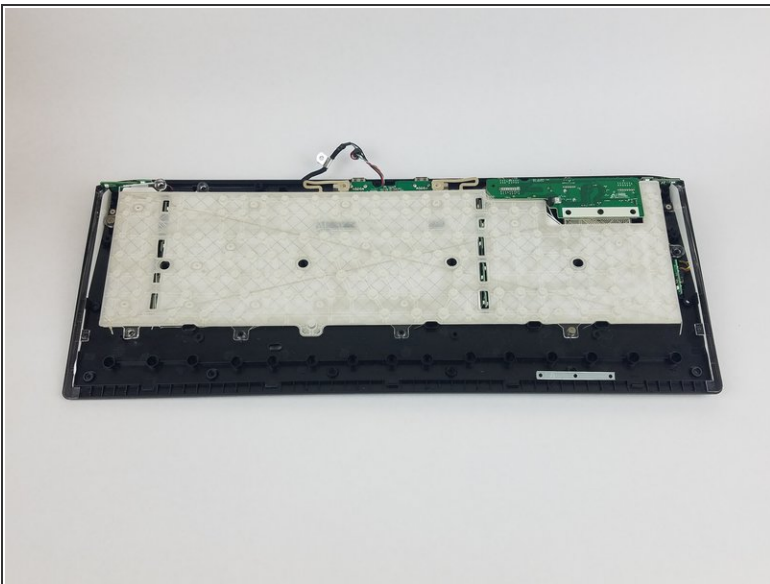
- Unscrew the twenty black 4.5 mm Phillips #1 screws on the back of the keyboard.

Step 3



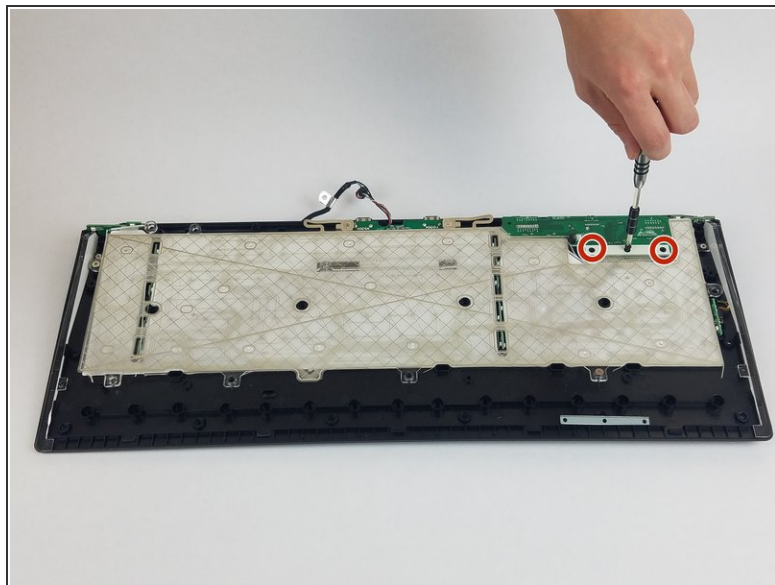
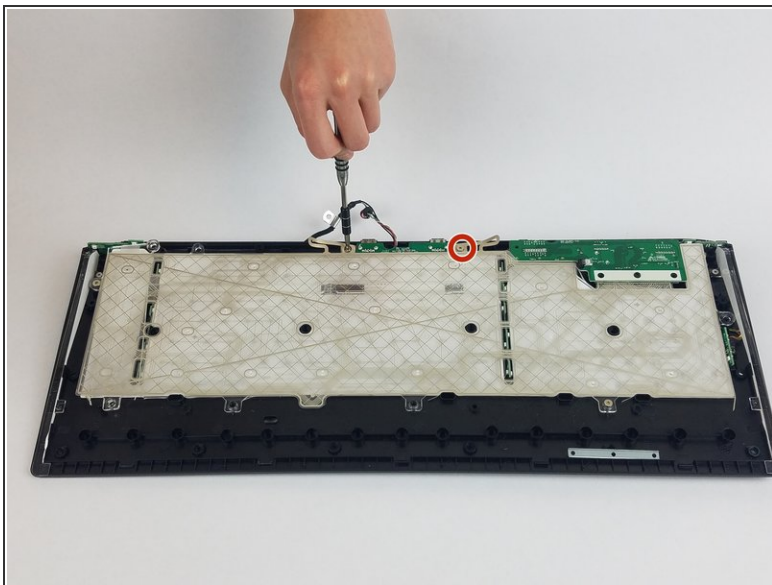
- Pry open the back of the keyboard.

Step 4



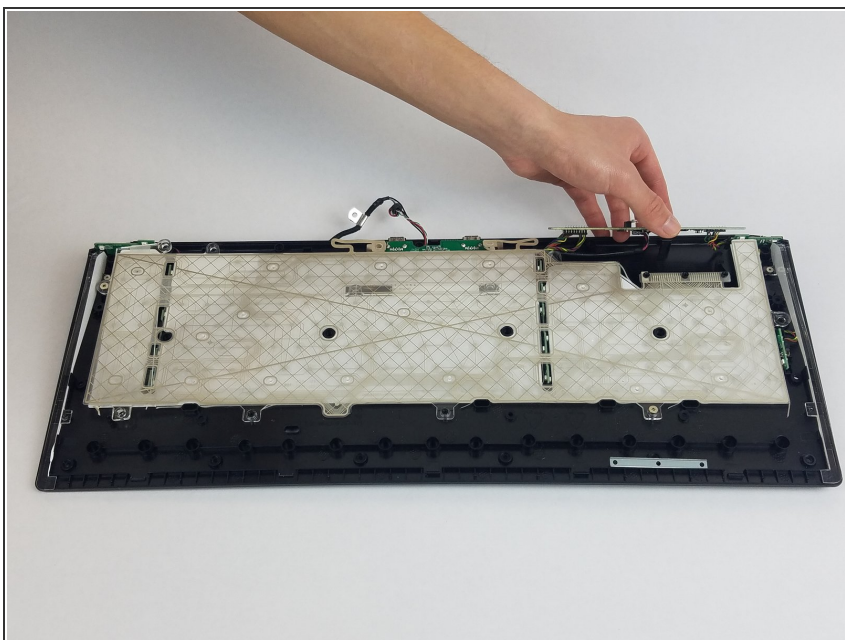
- Remove the gel membrane.

Step 5 — LED



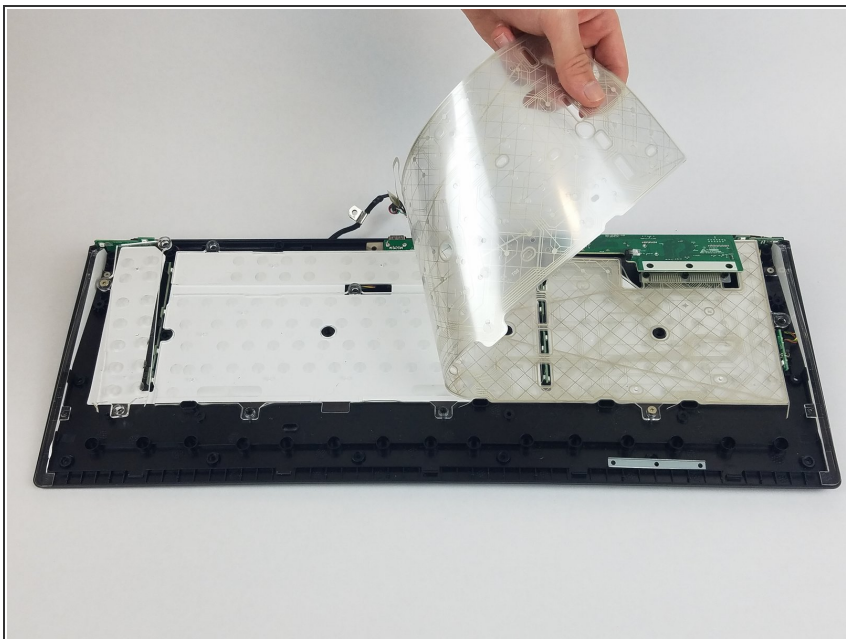
- Unscrew the two silver 4.0 mm Phillips #1 screws and the three black 6.5 mm Phillips #1 screws holding the silicone sheets.

Step 6



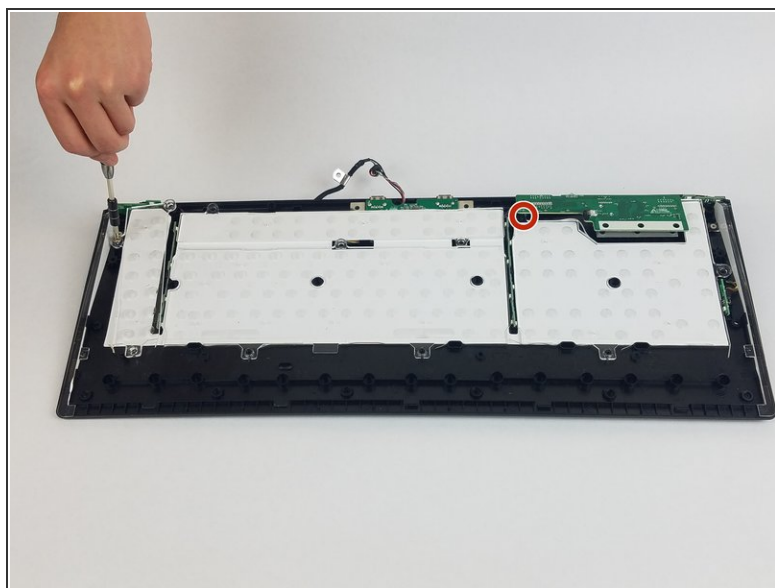
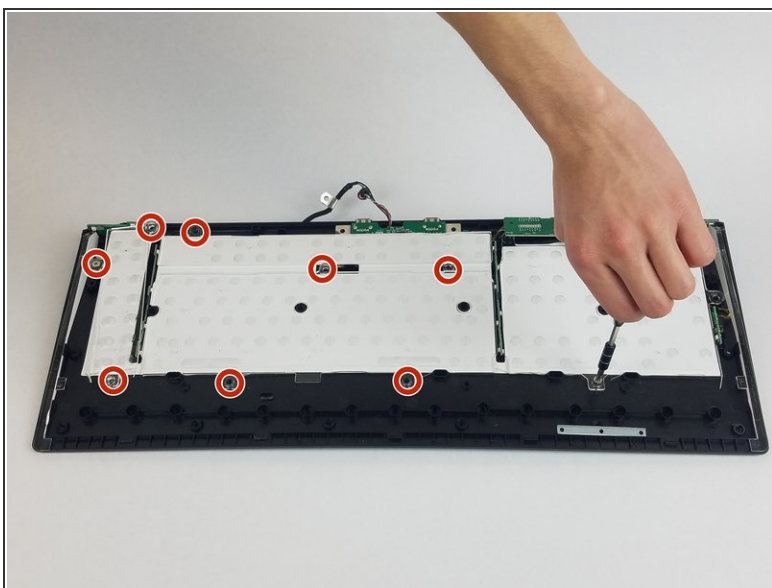
- Flip the chip slightly in order to remove the sheets.

Step 7



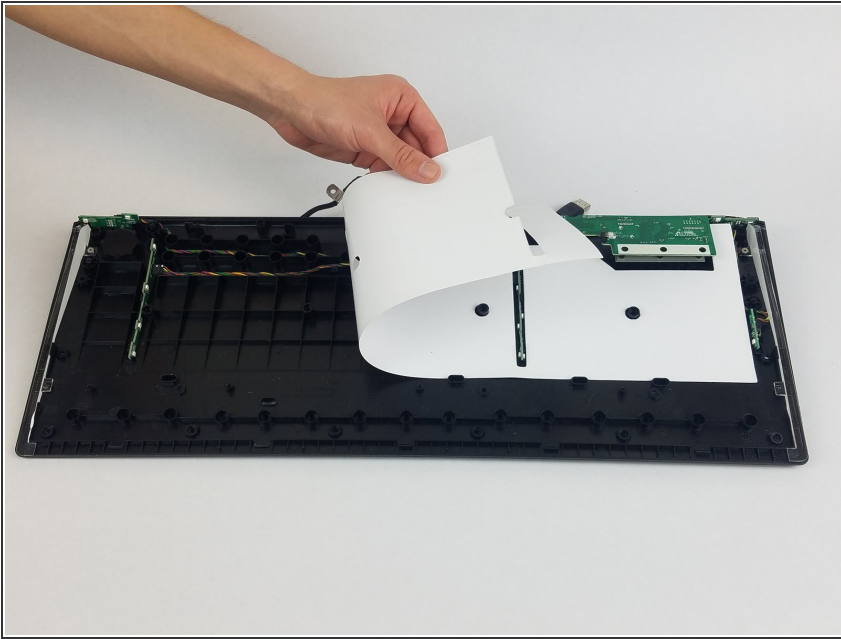
- Remove the sheets.

Step 8



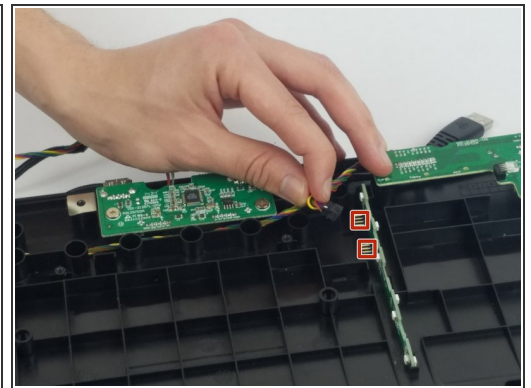
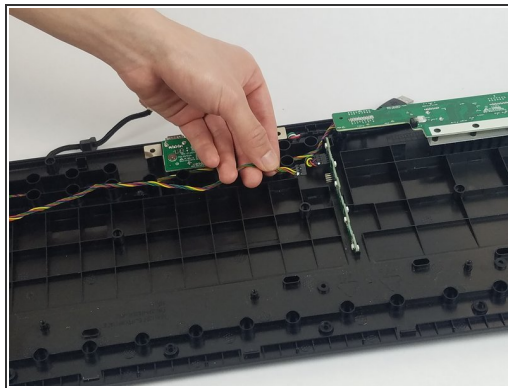
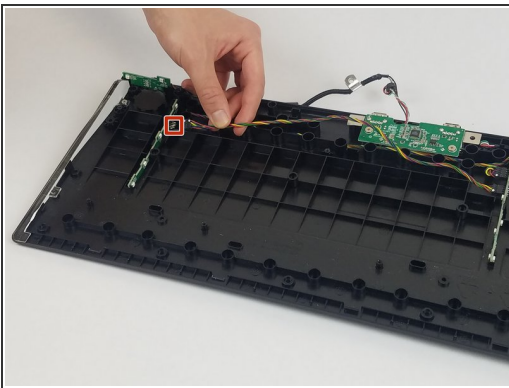
- Unscrew the two silver 4.5 mm Phillips #1 screws and the seven 5.0 mm Phillips #1 screws that deter the plastic panel from removal.

Step 9



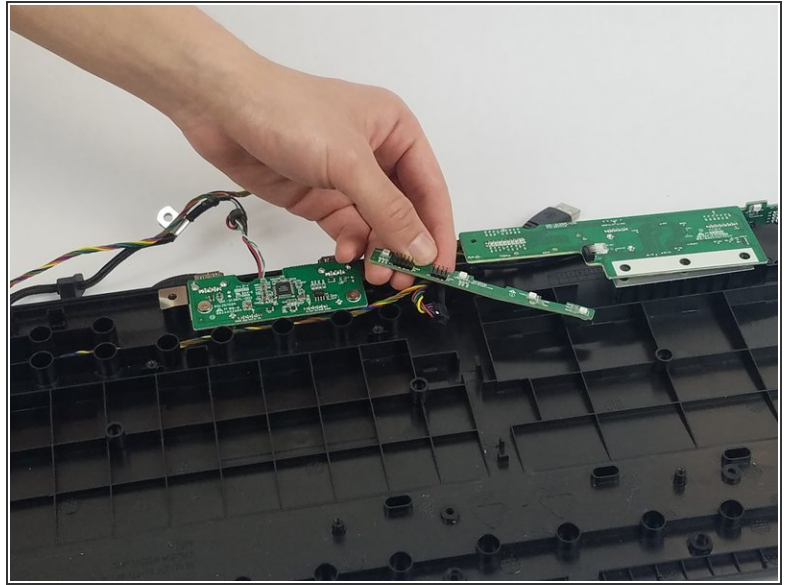
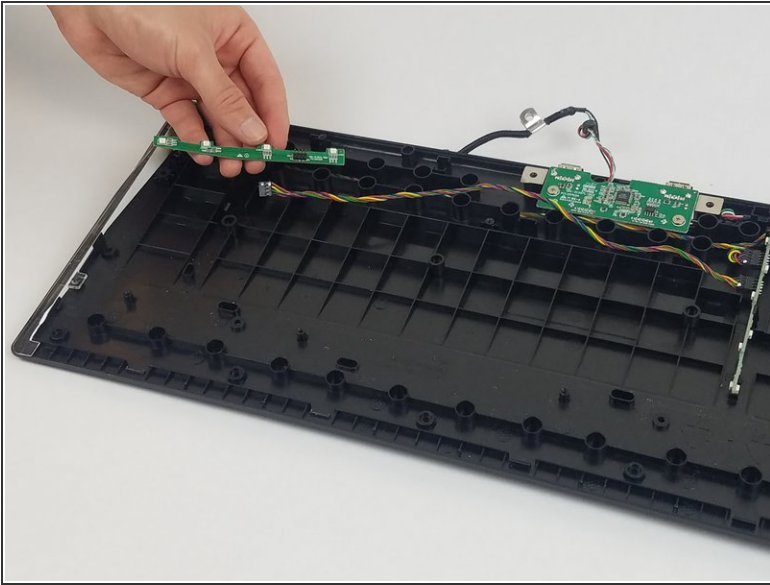
- Remove the plastic panel and the white sheet.

Step 10



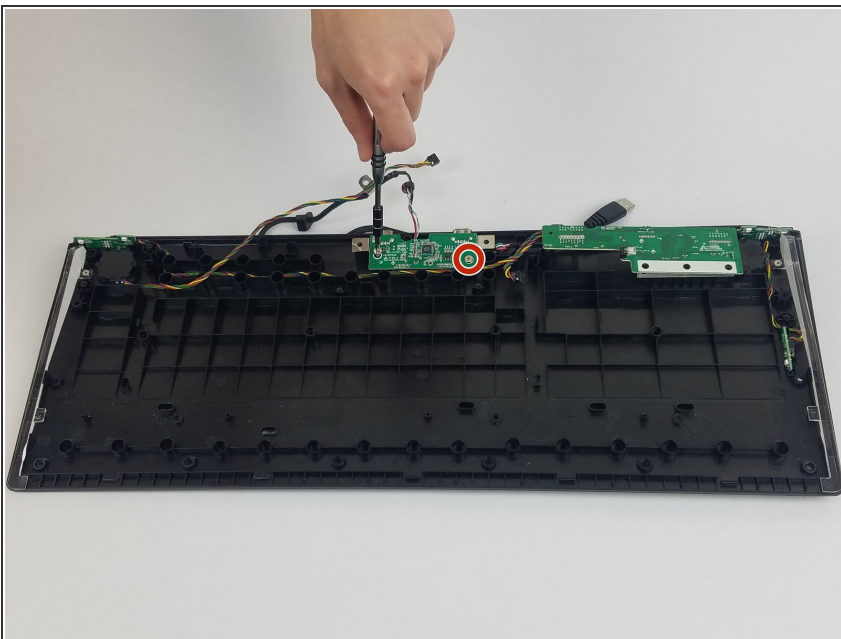
- Unplug the wires connected to the LEDs.

Step 11



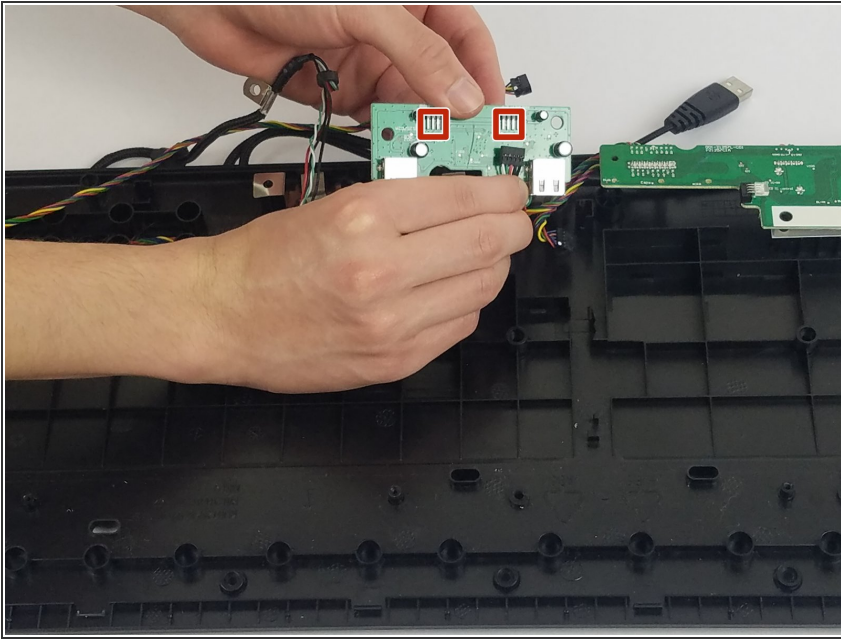
- Remove the LEDs.

Step 12 — USB Port Connector



- Unscrew the two 4.5 mm silver Phillips #1 screws that hold the USB port connector.

Step 13



- Unplug the wires and remove the USB port connector.

To reassemble your device, follow these instructions in reverse order.