



# Steelseries Rival 700 Gaming Mouse Top cover Replacement

Replacing the cover is an easy operation. It can be useful when yours is damaged or if you purchased a new one at Steelseries, such as anti-sweat coating cover.

Written By: Vincent Monteil



---

## INTRODUCTION

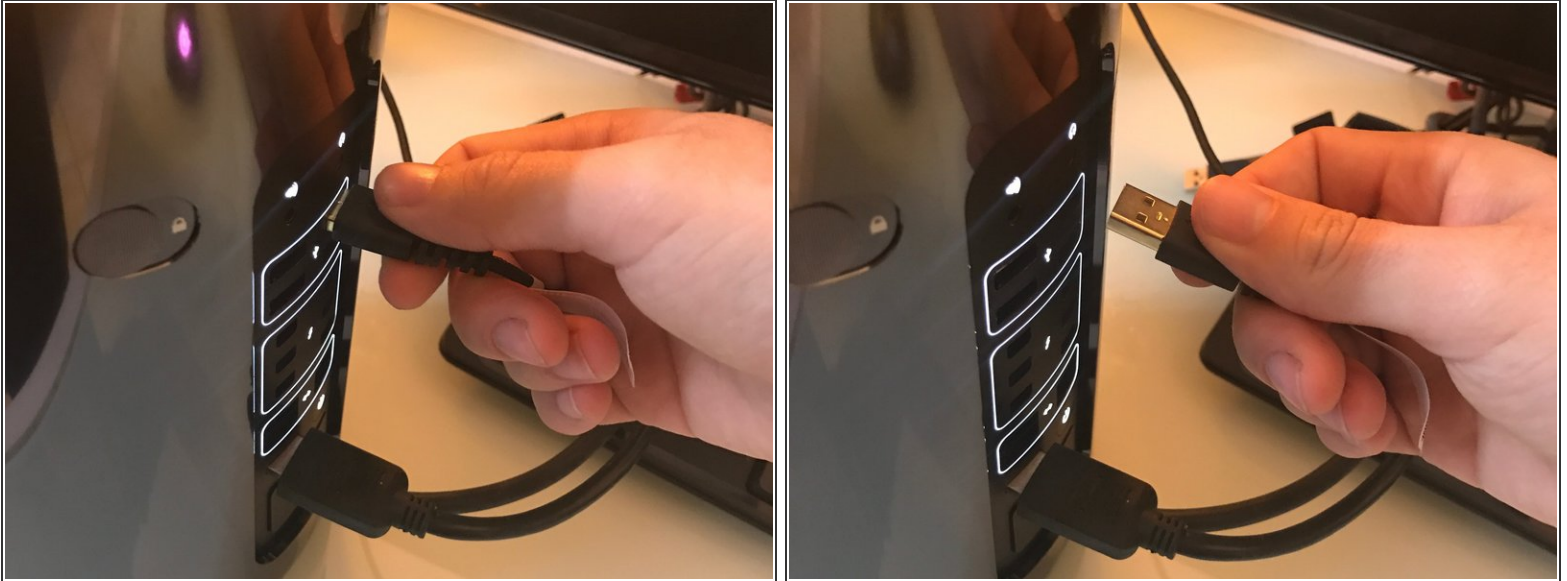
Replacing the cover is an easy operation. It can be useful when yours is damaged or if you purchased a new one at Steelseries, such as anti-sweat coating cover.



### PARTS:

- [Steelseries Rival 700 Top Cover](#) (1)
-

## Step 1 — Disconnect the mouse from your computer



- To avoid electronically damaging either your computer or your mouse, unplug the usb cable from its socket.

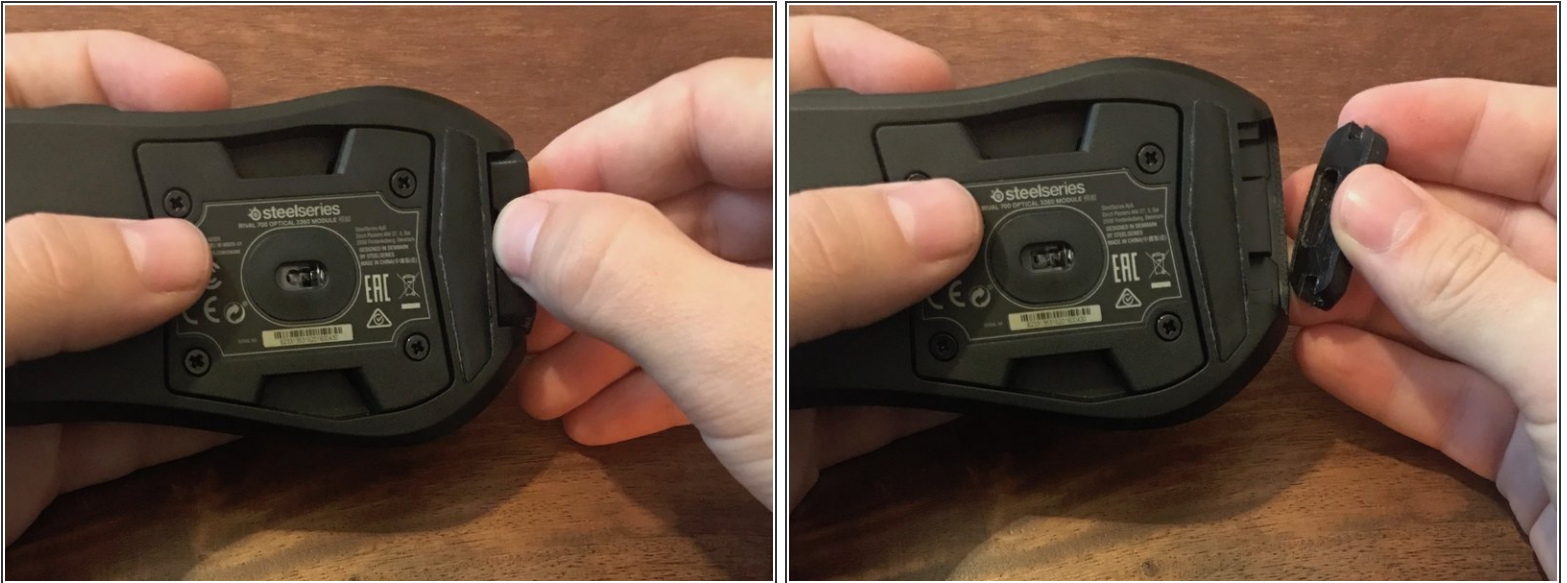
## Step 2 — Disconnect the cable from the mouse



- The Rival 700 mouse is a non wireless mouse. The micro-USB cable end is an elbow socket, secured by a plastic clip.
- To **disconnect** the cable from the mouse, firmly press the plastic clip using your thumb



### Step 3 — Nameplate removal



- The original nameplate is a soft rubber one that can be removed just by pulling it softly out of its socket.
- **WARNING:** When reassembling, if you're using a custom nameplate that may not be as stretchable as the original one, insert it softly, and use a lime tool on the new part to avoid damaging the mouse socket.

## Step 4 — Nameplate printing



- You will be able to download the 3D files to design a custom nameplate on the Steelseries website. The link is also provided in the part description.
- On this picture, the original "RIVAL" nameplate will be replaced with a new one on which i just had my Twitch ID printed.
- Be creative, use colored plastic, put logos and drawings on your mouse.

## Step 5 — Top cover removal



- Use both your index and thumb to gently pry the top cover out from the mouse.
- This part is a thin plastic one which needs a certain amount of strength to be removed. Be careful not to break it.

## Step 6 — Top cover replacement



- Steelseries sells a set of two different covers to replace the original one, with a sweat-resistant one f.e.
- Check the parts section for the purchase link.
- On the left, you can see on the wide led slot that is used to color the Steelseries logo on your mouse.

To reassemble your device, follow these instructions in reverse order.