



Subwoofer Rubber Surround Repair

This guide shows you how to fix any nicks or tears in your subwoofer's rubber surround!

Written By: Miroslav Djuric



INTRODUCTION

I realized — a little too late — that a couple of retaining clips were rubbing against the top of the subwoofer/enclosure in my car. One clip was (thankfully) scratching the subwoofer enclosure carpet, but the other one had poked a hole on the subwoofer's rubber surround.

I removed the retaining clips so there would be no issues in the future, but the damage had already been done. So I figured what the heck — might as well make a guide!



TOOLS:

- [Phillips #2 Screwdriver](#) (1)
- [Latex or nitrile gloves](#) (1)
- [Flashlight](#) (1)



PARTS:

- [Black RTV Silicone](#) (1)

Step 1 — Subwoofer Rubber Surround Repair



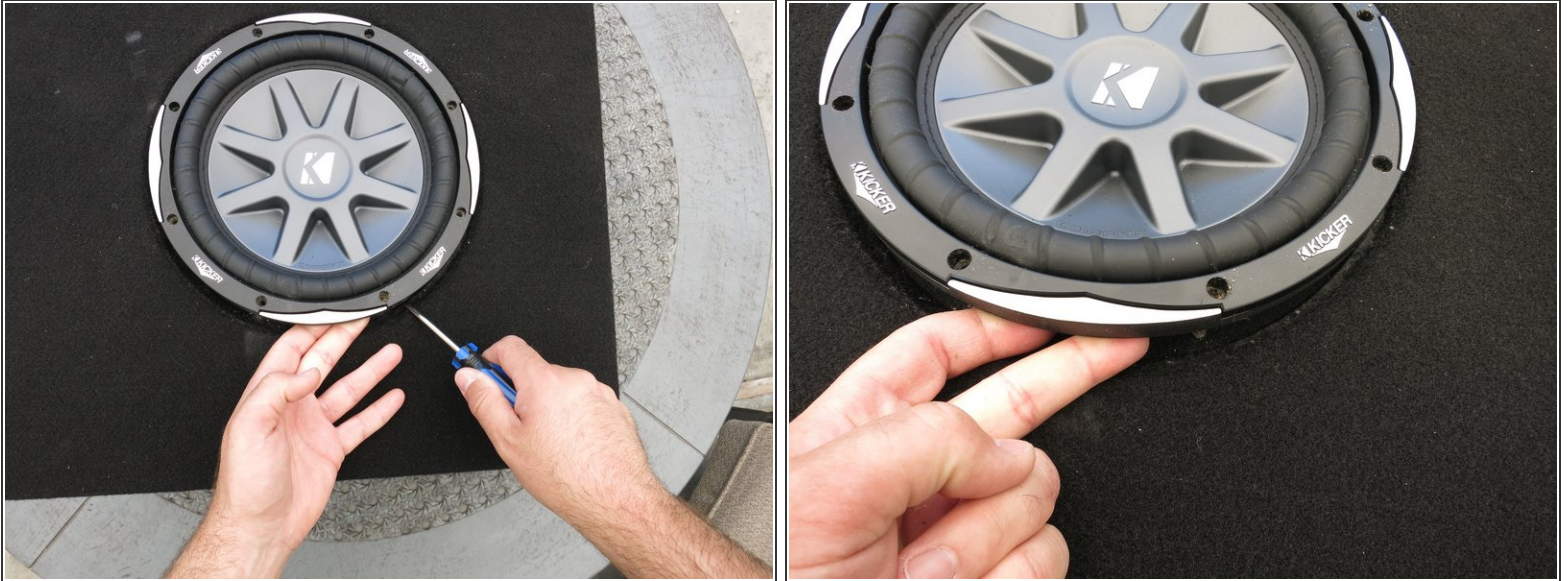
- Assess the damage. Depending on the severity of the cut, you may need some other scaffolding material (aside from RTV silicone) to enclose the hole.
 - ⓘ This is especially true if a chunk of the rubber material is completely missing from the rubber surround.
- In this case, all we need to do is cover up the tear with RTV silicone in order to make the subwoofer almost as good as new — functionally, at least.

Step 2



- Unscrew the eight #2 Phillips screws using either a screwdriver or cordless driver.
 - ★ Be careful if you use a cordless driver for either screwing or unscrewing — you don't want to strip the screws or the enclosure's holes. You also don't want to accidentally create *another* hole in the rubber surround with either tool.

Step 3



- Use a flat pry tool (such as a flat-blade screwdriver) to prop up an edge of the subwoofer.
 - ❗ In my case, I just used the Phillips #2 screwdriver I had on-hand.
- Slide your fingers underneath the sub so that you get a good grip on its edge.
- Carefully lift the subwoofer out of the enclosure, minding any wires that may be tethering the sub to the enclosure.

Step 4



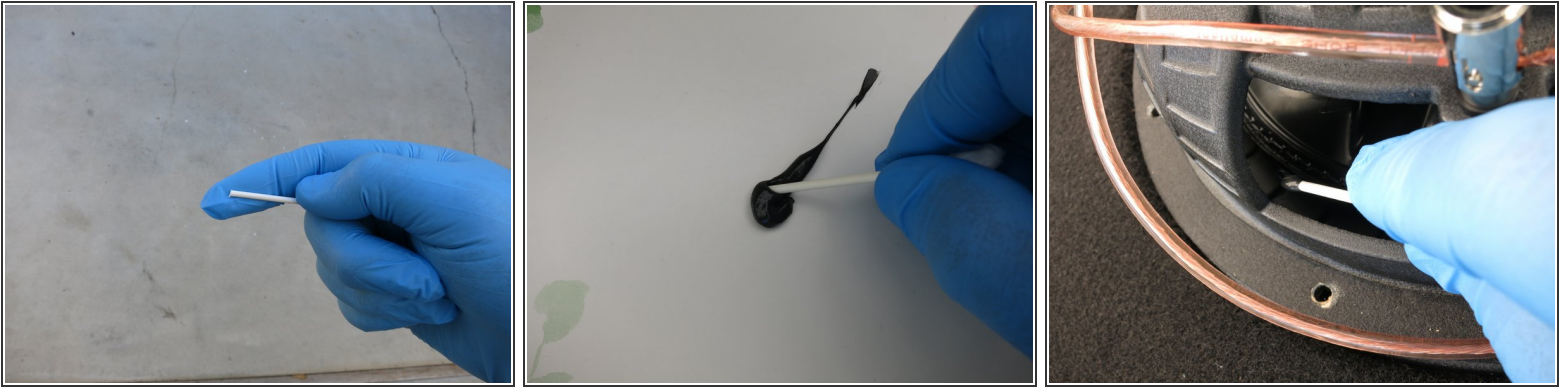
- Use a clean, lint-free cloth to wipe away any dirt/grease/grime that would otherwise tarnish the bond between the rubber and RTV silicone.
- Inspect the underside of the tear and also gently clean it with a cloth, if needed.

Step 5



- Time to get dirty. Put on your favorite brand of nitrile or latex gloves.
- Put a dab of RTV silicone on a disposable plate, or some other clean, non-essential surface.

Step 6



- Cut the end off a cotton swab in order to transform it into an RTV applicator.
 - ❗ Alternatively you can try removing all of the cotton from the swab, but you certainly *do not want* any cotton fibers to remain on the swab.
- Dip the swab into the RTV silicone, and use it to apply the RTV silicone to the underside of the subwoofer tear.
- You do not need a huge amount of RTV silicone on either side of the rubber surround — just enough to form a very thin layer.


Step 7



- With the underside coated, put a dab of RTV silicone onto your gloved finger.
- Gently spread the RTV silicone across the front of the torn subwoofer surround.
- Again, you don't need gobs of RTV silicone in order to make a strong bond — just enough to form a thin layer.

Step 8



 Perform this action at your own risk -
- you may inadvertently open up the
hole again, depending on its size.

- Push down a couple of times on the center of the subwoofer to ensure that the RTV silicone doesn't accidentally impede the movement of the sub.

Step 9 — Optional Step



- After you're done applying the RTV silicone and testing the subwoofer's excursion, shine a strong flashlight

through the now-covered hole, and ensure that no light bleeds through.

- Ensure the sub wires are still connected properly, and reinstall the subwoofer back into the enclosure.
-