



Sunbeam Snow Cone Maker Dasher Replacement

Sunbeam Snow Cone Maker Dasher Replacement. The “Dasher” is the spinning plastic piece in the middle. It moves the ice around.

Written By: Thomas Falcon





TOOLS:

- [Phillips #00 Screwdriver](#) (1)
-

Step 1 — Dasher



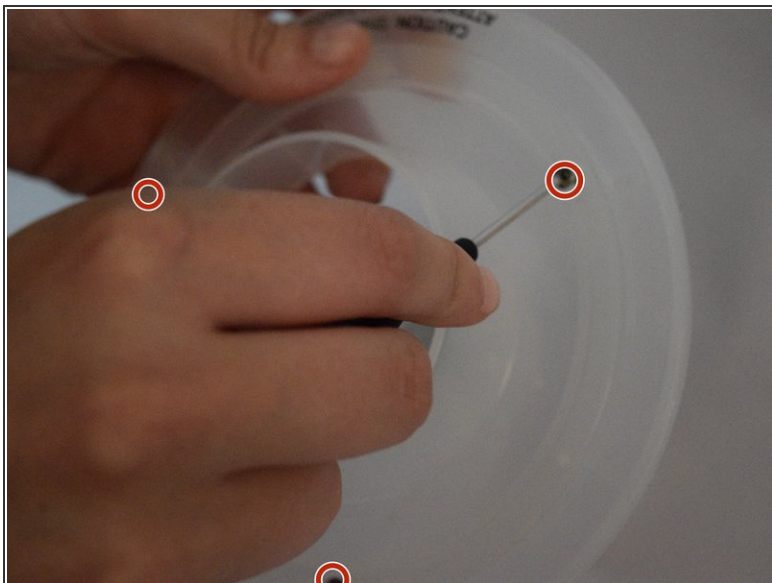
- Push the button on the back to release the lid. (Missing on this example device.)
- In the photo on the device page it is red.

Step 2



- Unscrew the dasher by holding it in the middle and turning clockwise.
 - You will have to spin it quite a bit.
- From here, you can now replace the dasher entirely.
 - Alternately, you can continue to step 3 to further disassemble the dasher components.
- To reassemble the device, follow these instructions in reverse order.

Step 3



- To take the dasher apart, remove the three 5.5 mm Phillips #00 screws embedded in the plastic.
**The 3rd screw is behind the hand in the picture
- Carefully pull the two pieces apart.
- When you've finished taking apart the dasher, you should have two parts that are shown in the second picture in this step.

To reassemble your device, follow these instructions in reverse order.