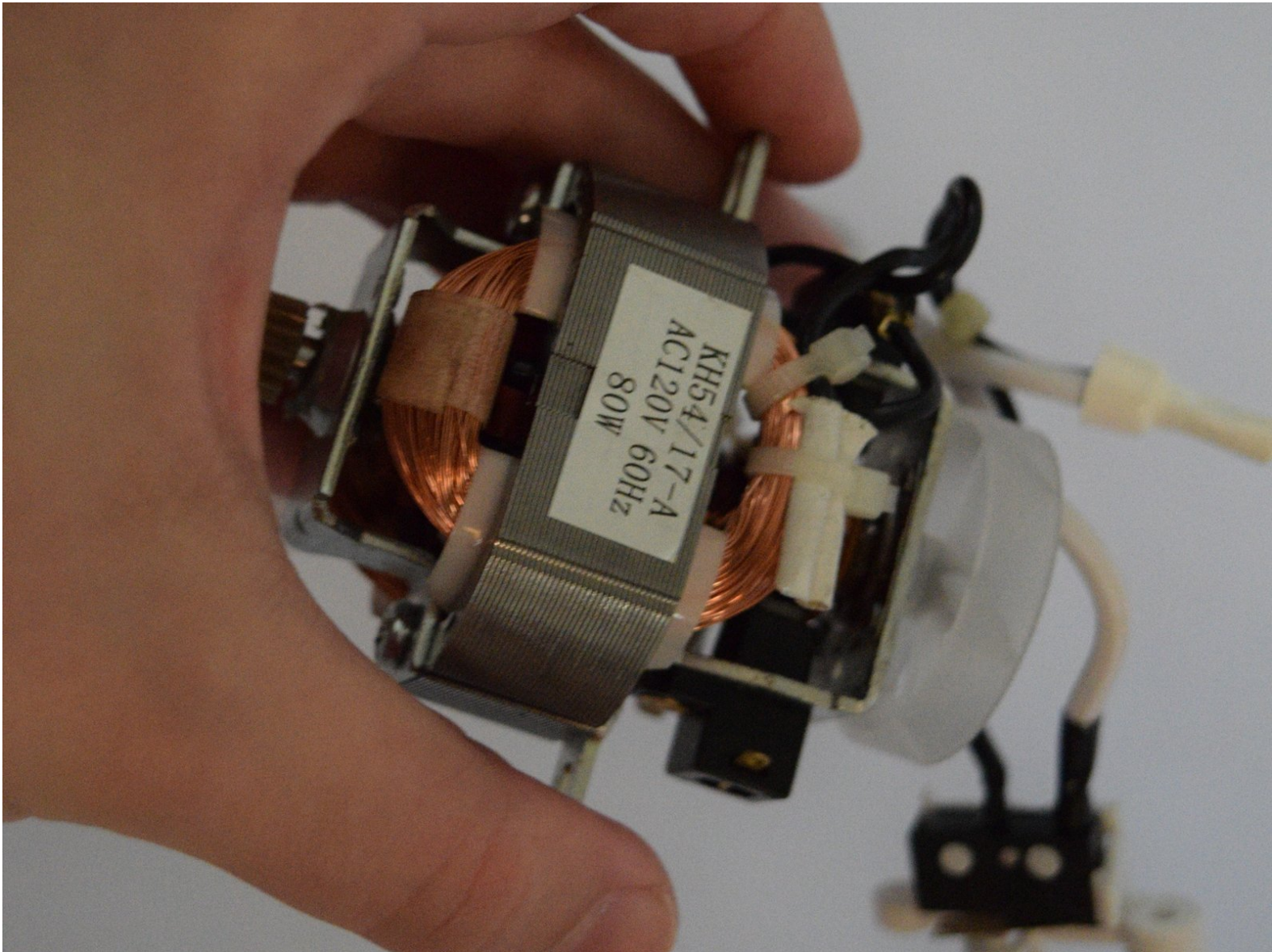




Sunbeam Snow Cone Maker Motor Replacement

This guide will show you how to dismantle the snow cone maker, remove the motor, and replace it.

Written By: Kirsty van Dam



INTRODUCTION

Replacing the motor is not difficult. It should take about ten minutes.



TOOLS:

- [T8 Torx Screwdriver](#) (1)
 - [Spudger](#) (1)
-

Step 1 — Dasher



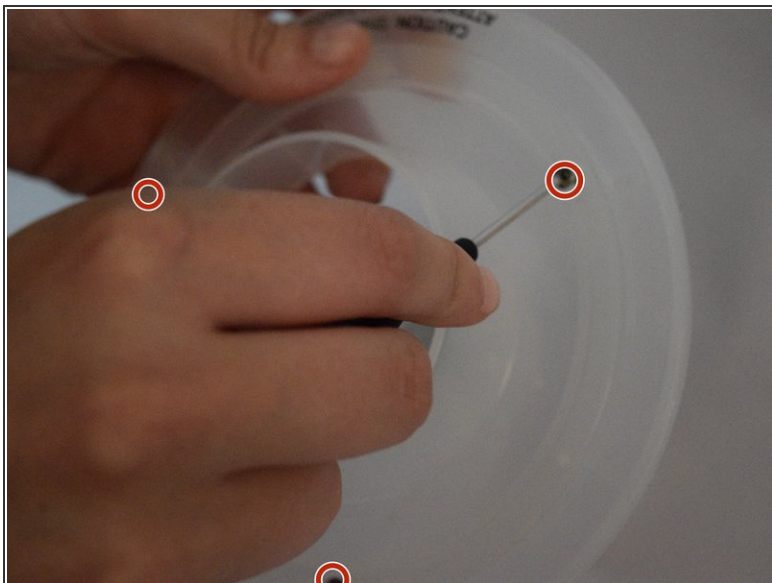
- Push the button on the back to release the lid. (Missing on this example device.)
- In the photo on the device page it is red.

Step 2



- Unscrew the dasher by holding it in the middle and turning clockwise.
 - You will have to spin it quite a bit.
- From here, you can now replace the dasher entirely.
 - Alternately, you can continue to step 3 to further disassemble the dasher components.
- To reassemble the device, follow these instructions in reverse order.

Step 3



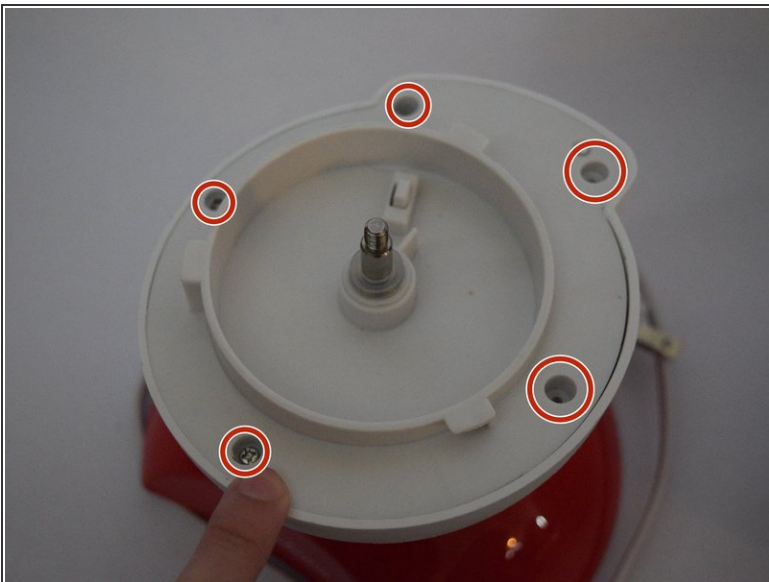
- To take the dasher apart, remove the three 5.5 mm Phillips #00 screws embedded in the plastic.
**The 3rd screw is behind the hand in the picture
- Carefully pull the two pieces apart.
- When you've finished taking apart the dasher, you should have two parts that are shown in the second picture in this step.

Step 4 — Motor



- After removing the dasher, turn the device so that you can see the “lock” and “unlock” symbols on the back.
- Twist the casing so that it is in the unlocked position and remove it from the bottom half of the machine.

Step 5



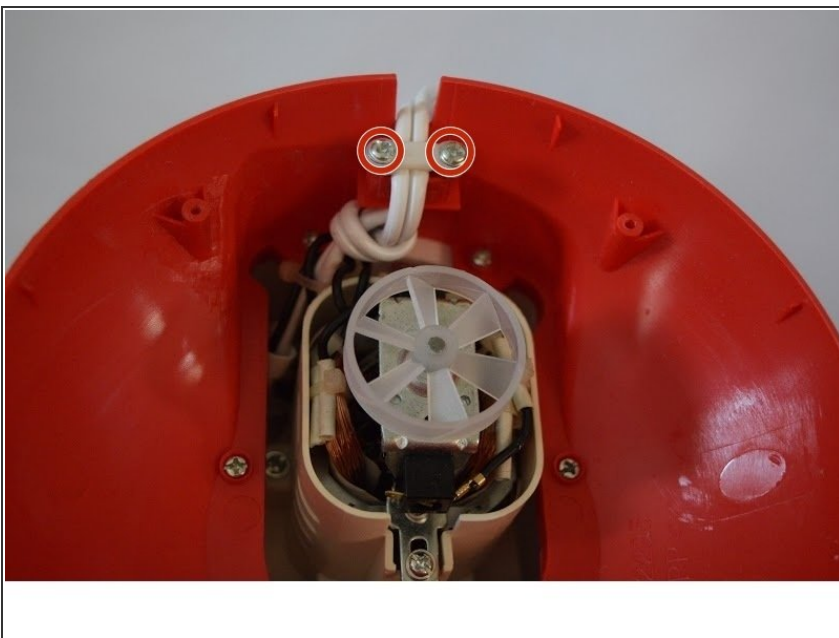
- Unscrew the five screws and remove the piece labeled in the picture. You should now be able to see the motor.

Step 6



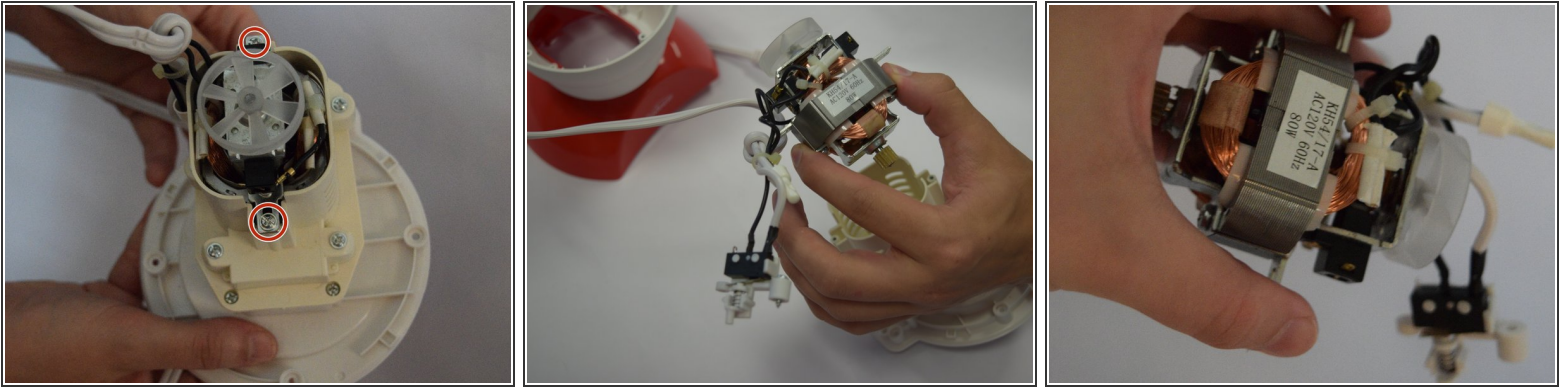
- Lay the device on its side.
- Remove the 4 gray rubber “feet” by pulling them straight outward.
- Remove the four 5.5 mm Phillips #00 screws that are under them.
- Remove the bottom plastic cover.

Step 7



- Remove the two 5.5 mm Phillips #00 screws holding a bracket to keep the cord in place.
- Remove the bracket so the cord has room to move.

Step 8



- Remove the topmost 2 5.5 mm Phillips #00 screws that hold the motor in it's casing.
- Remove and replace the motor.

To reassemble your device, follow these instructions in reverse order.