



# Super Famicom Teardown

This is the teardown guide for a pre-1995 Japanese Super Famicom.

Written By: Raphael Thoulouze



---

# INTRODUCTION

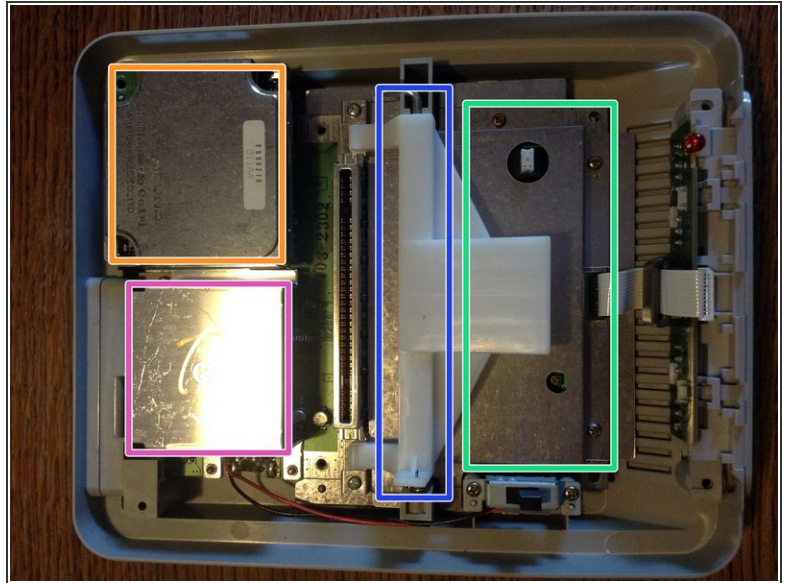
In this guide we'll see how to get to the the console's main board.



## TOOLS:

- [Gamebit 4.5mm](#) (1)
  - [Phillips #2 Screwdriver](#) (1)
-

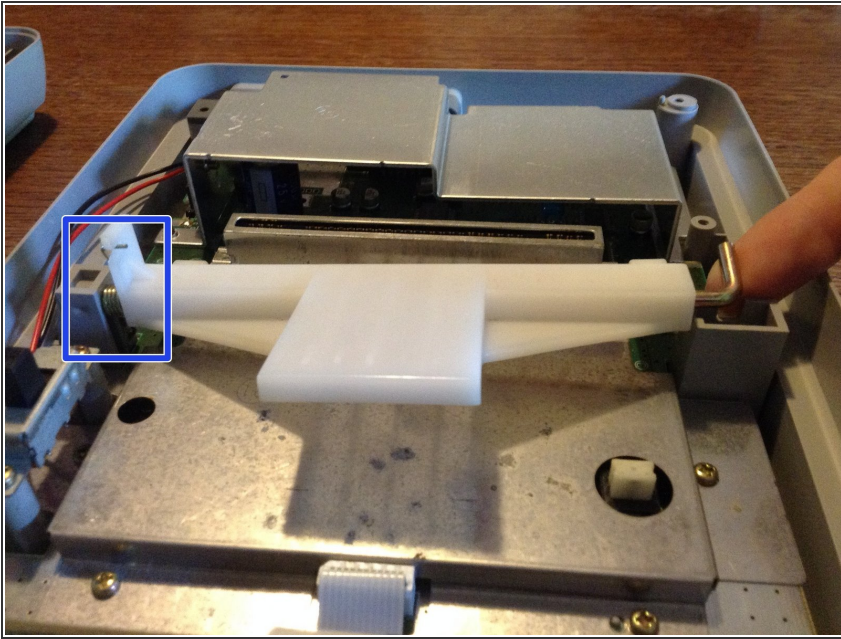
## Step 1 — Opening the Case



- Remove the 6 screws with a 4.5mm Gamebit screwdriver from the back of the unit.
- Turn the unit back up and lift the top cover. You can now admire :
- The ejecting mechanism.
- The sound chip. Present on early models, this is the main difference with the later hardware revisions of the console.
- The main board shield.
- The capacitors guard.

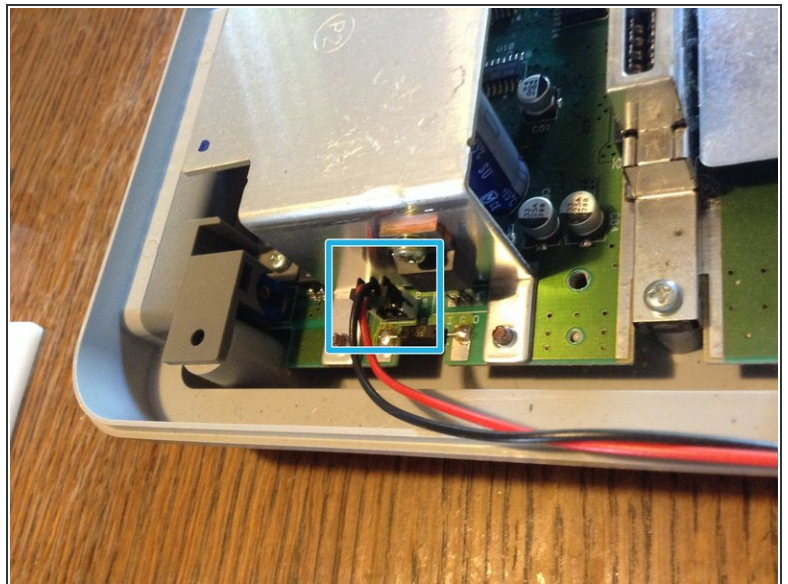
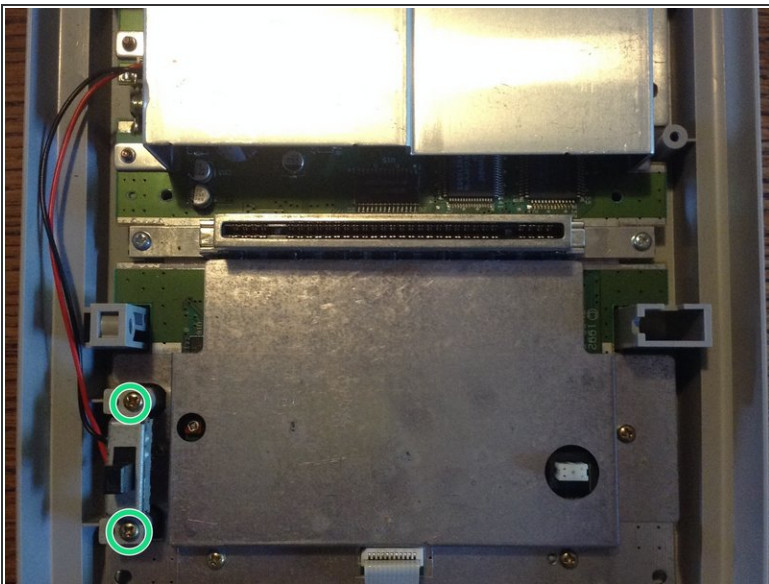


## Step 2 — Removing the Ejecting Mechanism



- The mechanism is held back in place by a small spring. It's not too tense but be careful not to lose it. Also, note how it's placed for future reassembly.
- Remove the mechanism by slightly lifting the axle from the right and pulling it out.

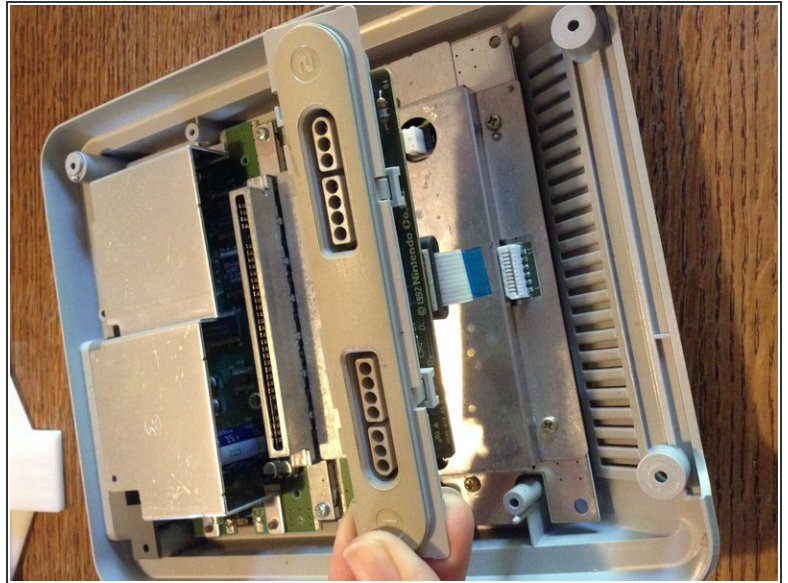
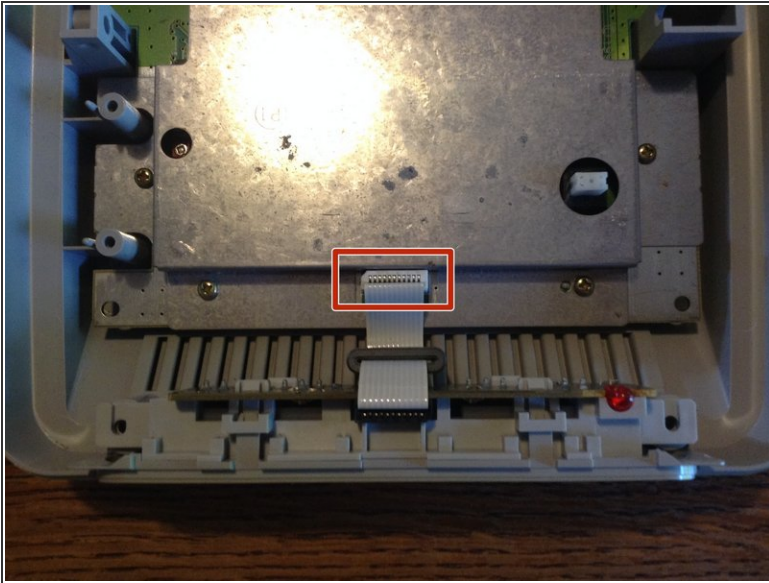
## Step 3 — Removing the Power Switch



- We'll need to remove a couple screws with a Phillips #2 screwdriver.
  - It's plugged to the main board with a small plastic socket. Simply pull on it to set it apart.
- ⚠ Don't pull on the wires to avoid damaging them. Pull on the plastic socket instead.

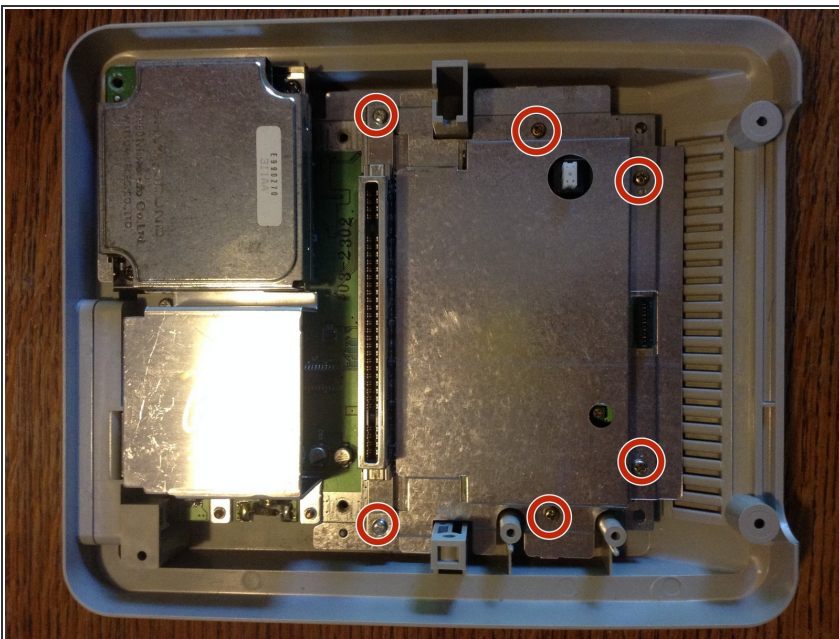


## Step 4 — Removing the Front Panel



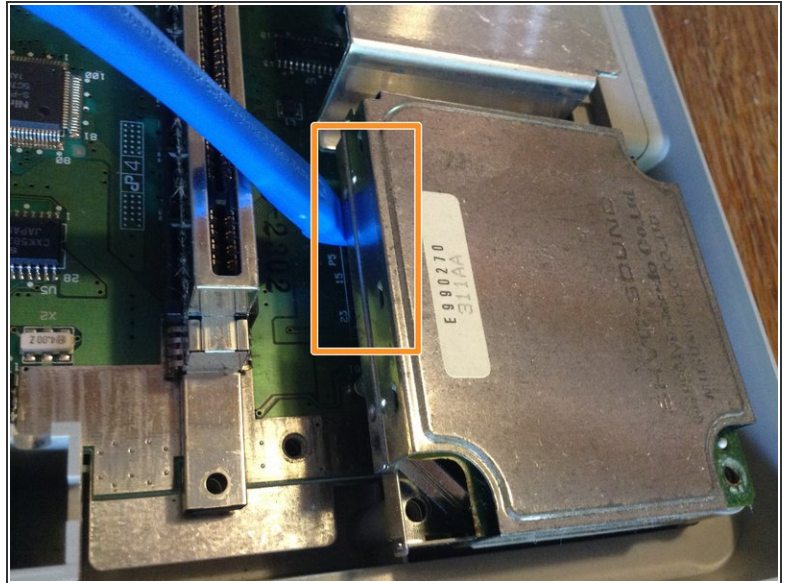
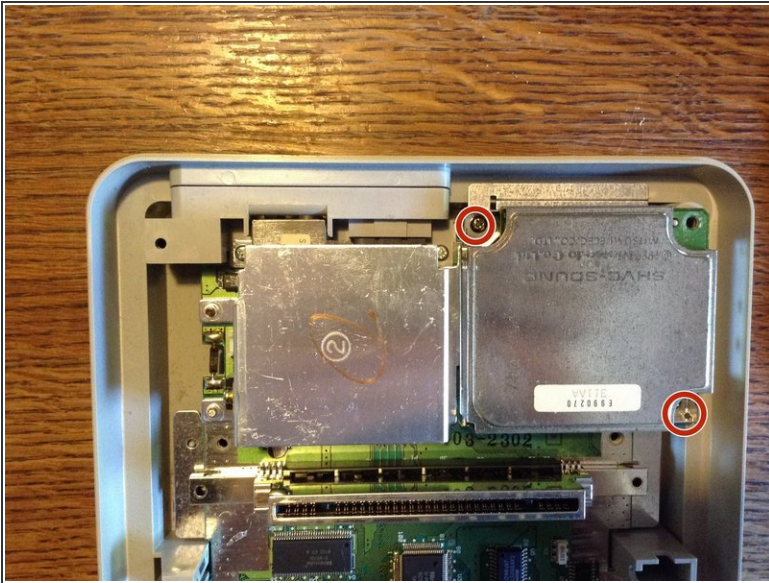
- The front panel is connected to the main board with a ribbon cable. Gently pull it out of its socket.
- The front panel can then be lifted out.

## Step 5 — Removing the Main Board's Shield



- The shield is held by 6 Philips #2 screws.

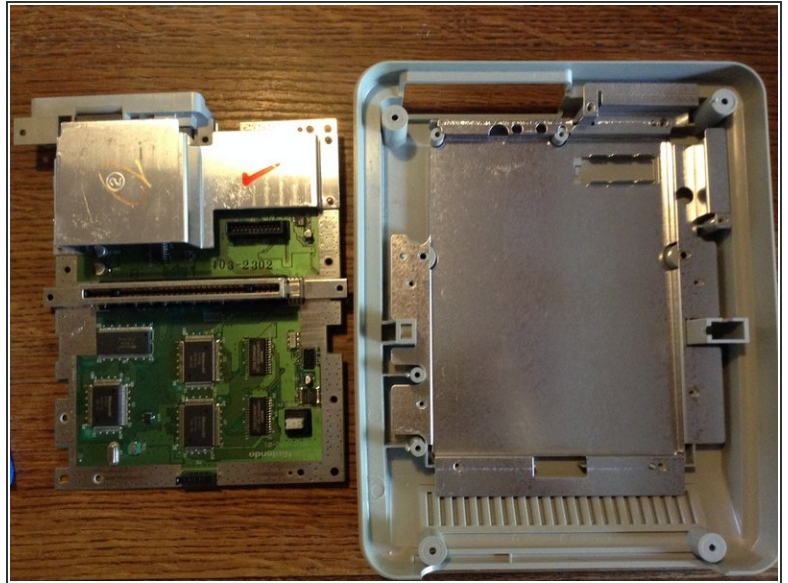
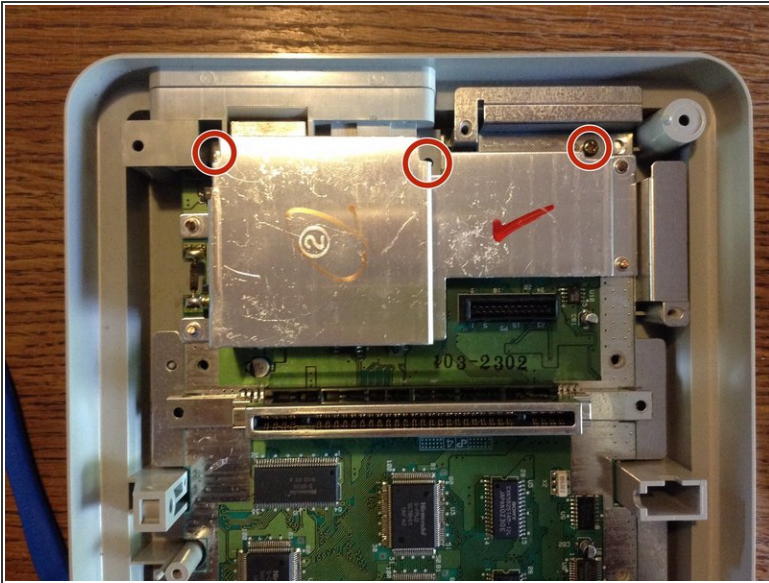
## Step 6 — Removing the Sound Chip



- The chip is held by 2 Philips #2 screws.
- It's then just held by the bus socket on the lower left side of the chip.
- Simply shimmy it out of the socket. You might need the help of a prying tool but don't put too much pressure on the cartridge port.

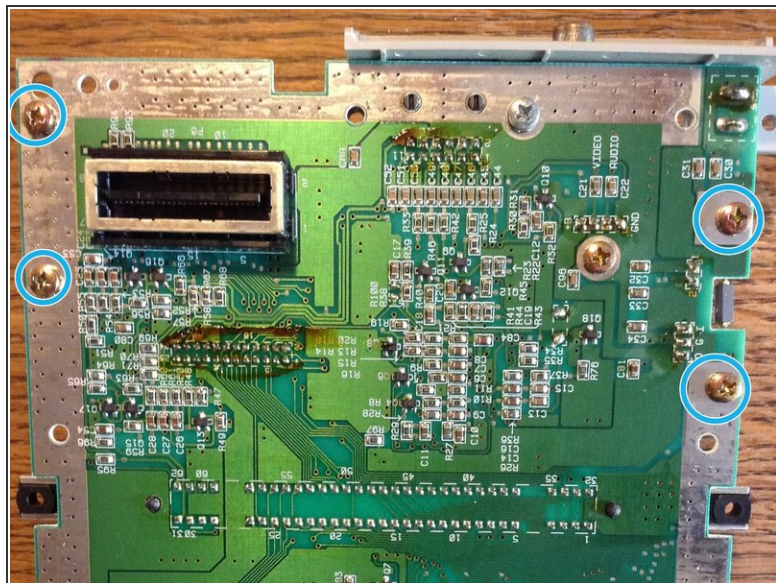
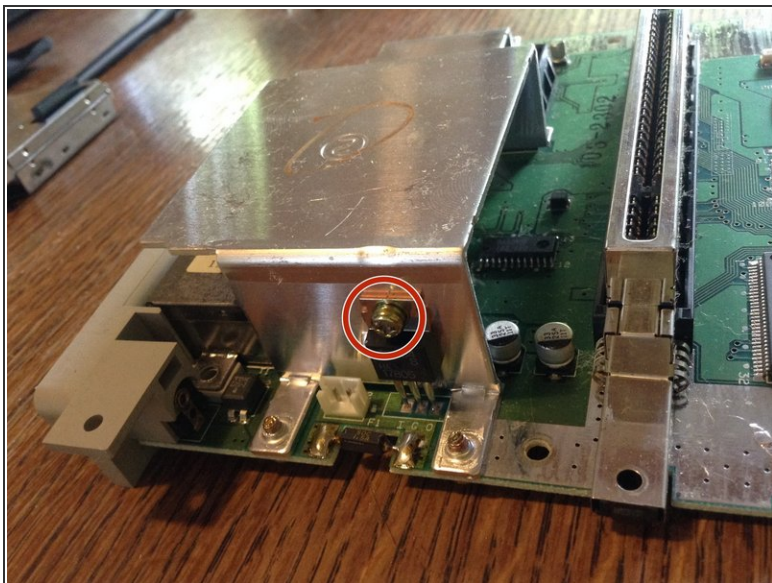


## Step 7 — Lifting the Main Board



- The board is now only held by 3 Philips #2 screws.
- Lifting the main board reveals the lower shield that got scrapped in later hardware revisions of the console.

## Step 8 — Removing the Capacitors Guard



⚠ Capacitors can hold charge for a long time, be careful.

- First, remove the lateral screw (Philips #2, still).
- Turn the board around and unscrew the 4 last screws.