



Super Nintendo Super Nintendo Outer Case Replacement

This guide will show you how to remove the upper half of the Super Nintendo case.

Written By: Cameron Deines



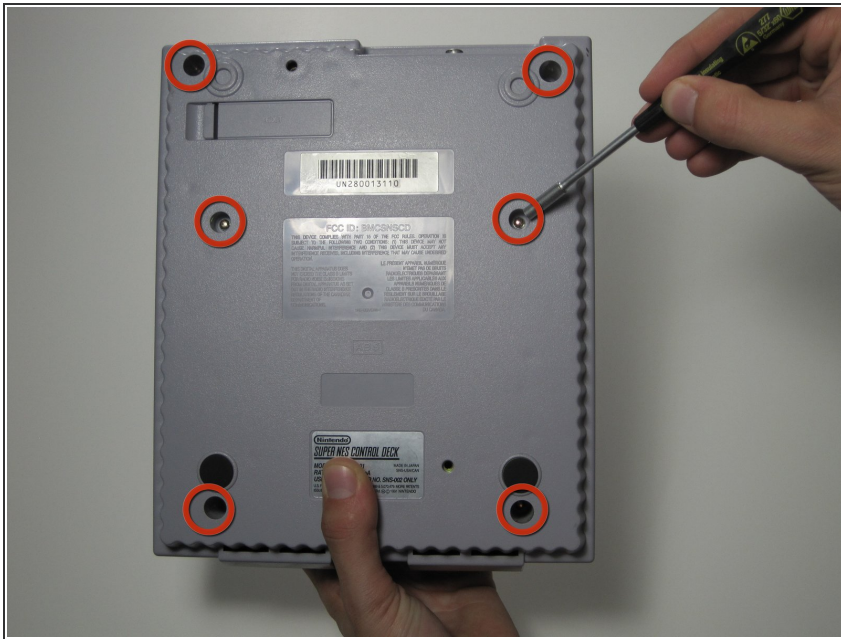
INTRODUCTION

This guide will show you how to open up your Super Nintendo.

TOOLS:

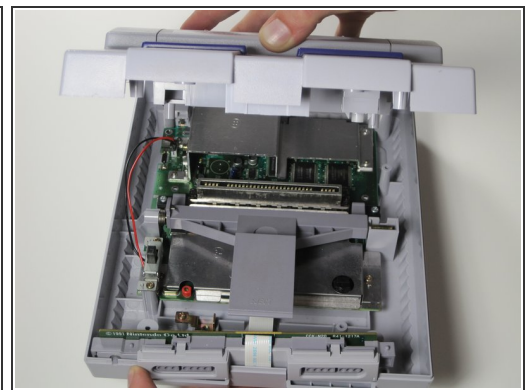
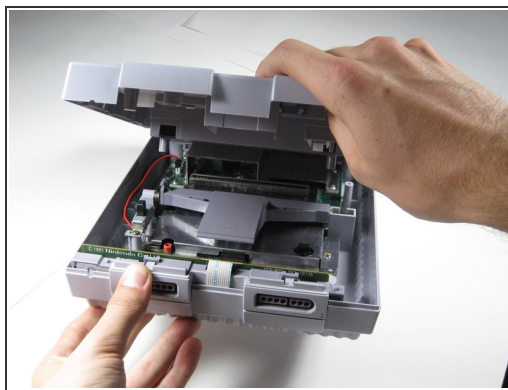
- [Gamebit 4.5mm](#) (1)
-

Step 1 — Outer Case



- Remove the six screws located on the underside of the system using the Gamebit 4.5mm screwdriver.

Step 2



- Carefully flip the unit back over.
- Locate the seam. Lift and separate the upper half of the case from the lower half of the case.

To reassemble your device, follow these instructions in reverse order.