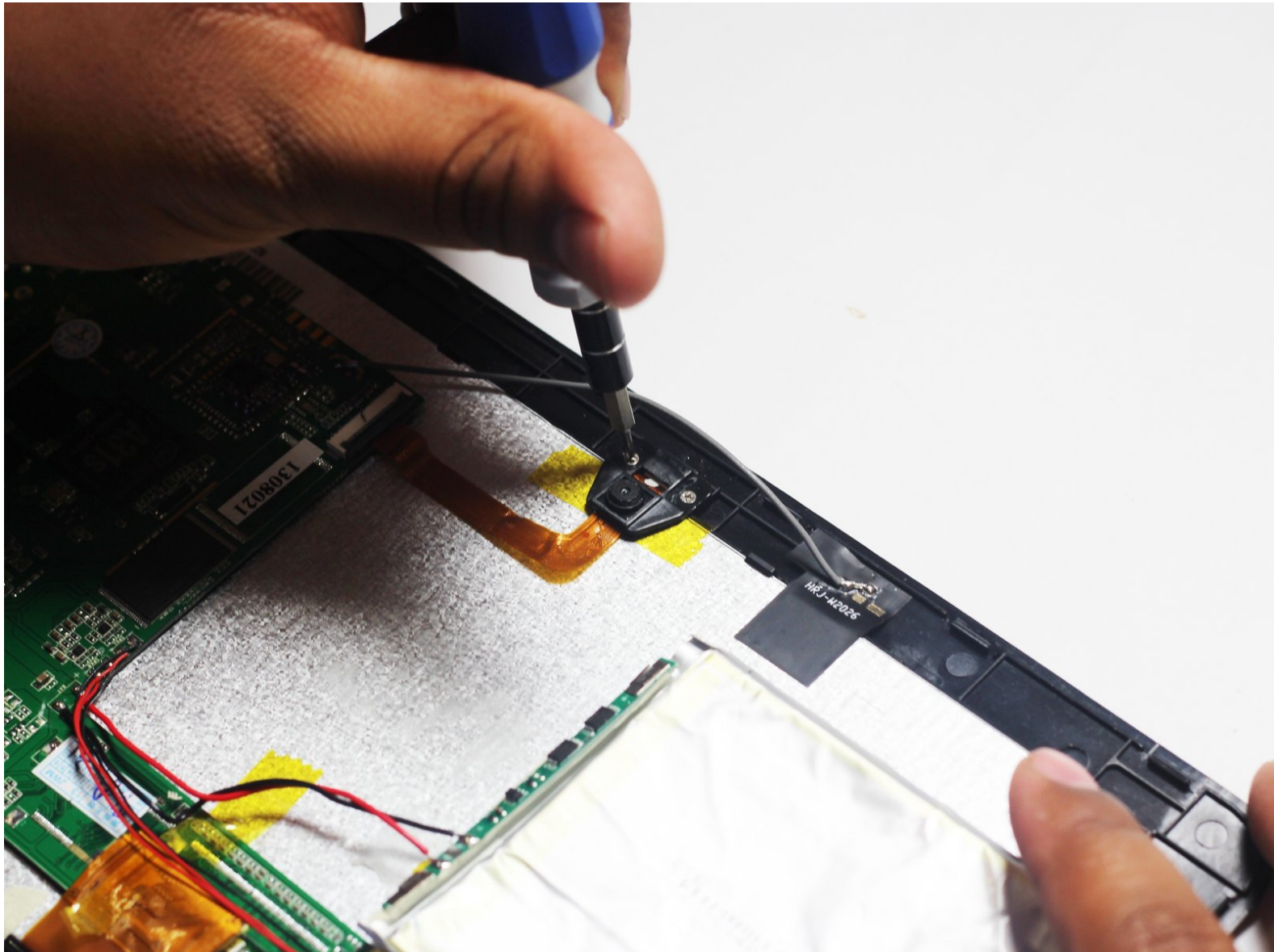




SuperSonic Matrix Mid SC-999 Rear Facing Camera Replacement

This guide will show you how to replace the internal camera.

Written By: Harris Dagha



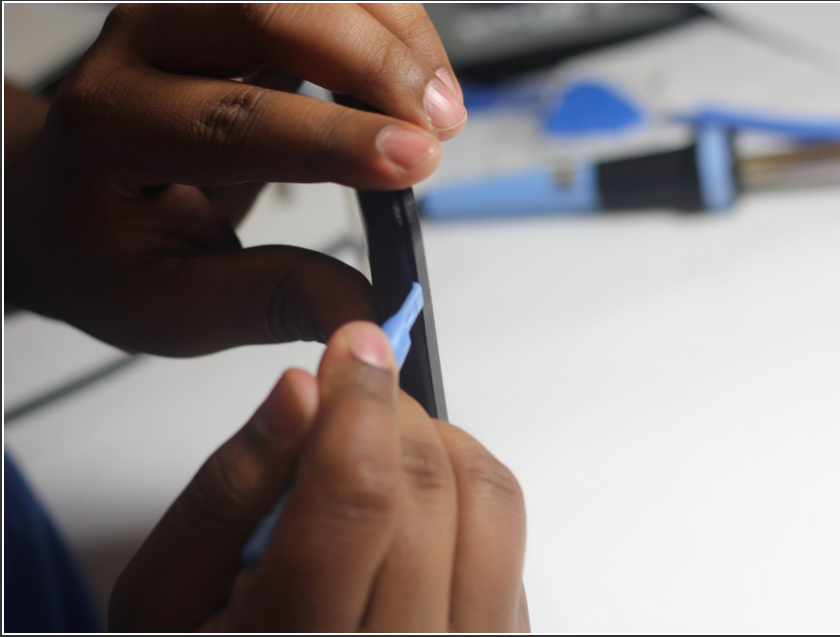
INTRODUCTION

In this guide you will open the back cover and use a screwdriver to remove the camera from its housing.

TOOLS:

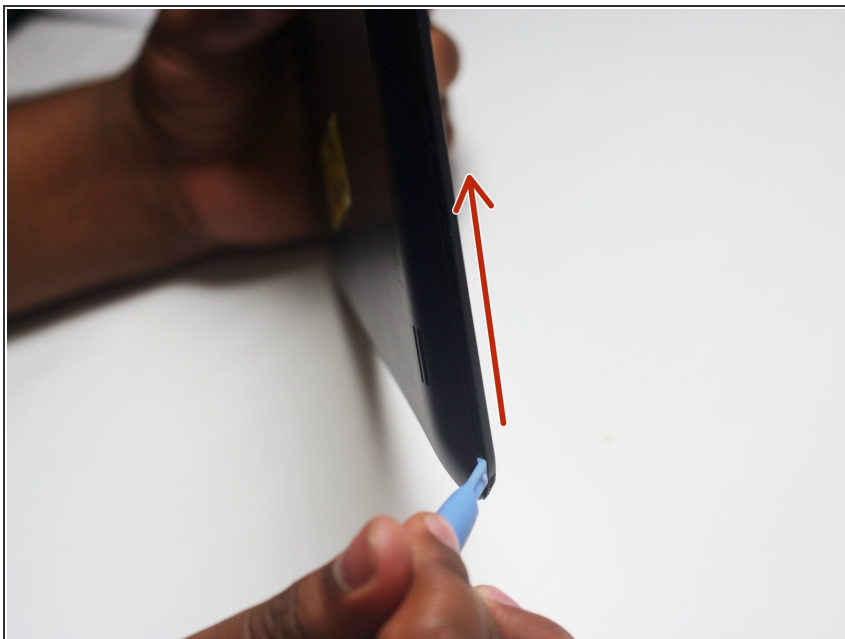
- [iFixit Opening Tools](#) (1)
 - [Phillips #00 Screwdriver](#) (1)
 - [Spudger](#) (1)
 - [iOpener](#) (1)
 - [Safety Glasses](#) (1)
 - [Soldering Iron](#) (1)
-

Step 1 — Back Cover



- Wedge the plastic opening tool between the back cover of the device and the front panel.
- You will hear a *snapping* sound as the cover is separated from the body of the device.

Step 2



- Slide the opening tool along the seam between the front panel and the back cover to un-clip the remaining connections around the device.
- Again, you will hear a *snapping* sound as the cover is separated from the body of the device.

Step 3



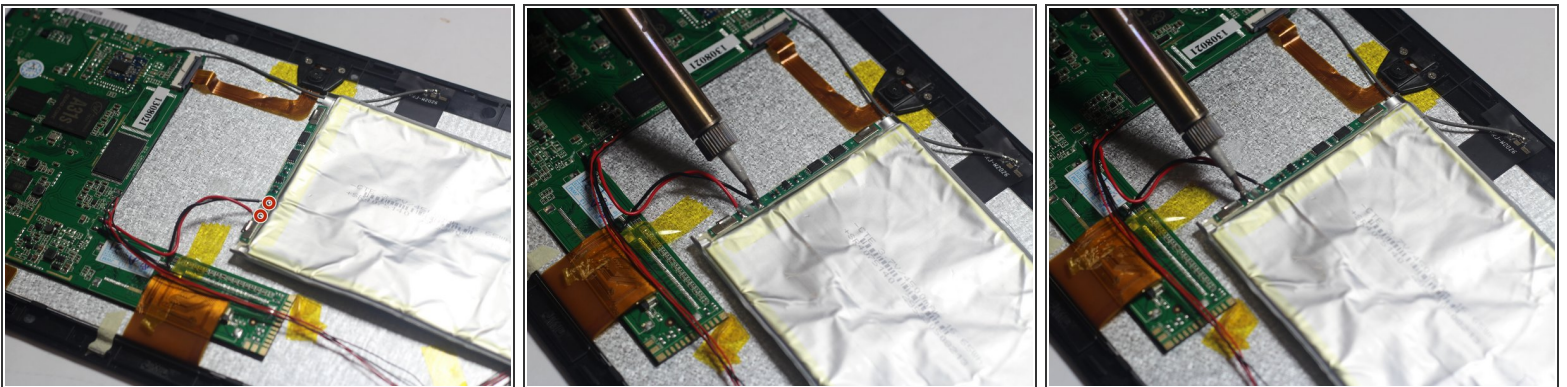
- Lift the back cover from the body of the device to expose the internal components.

Step 4 — Battery



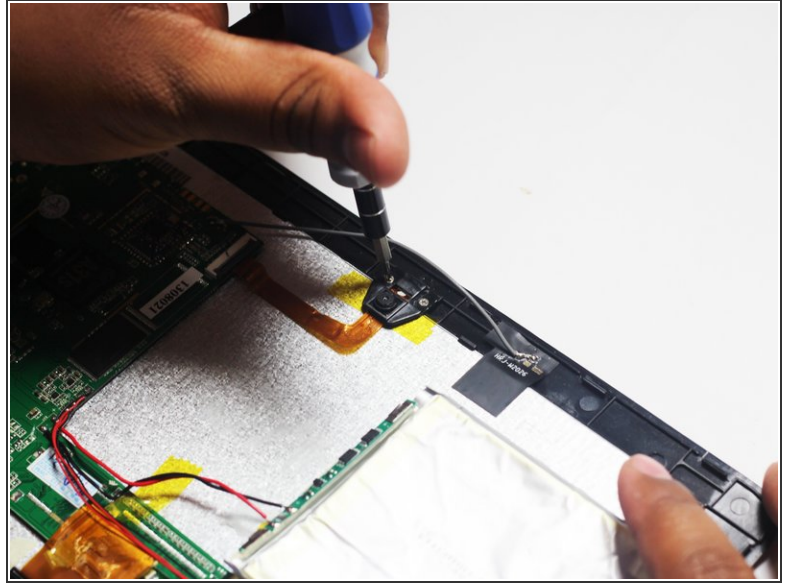
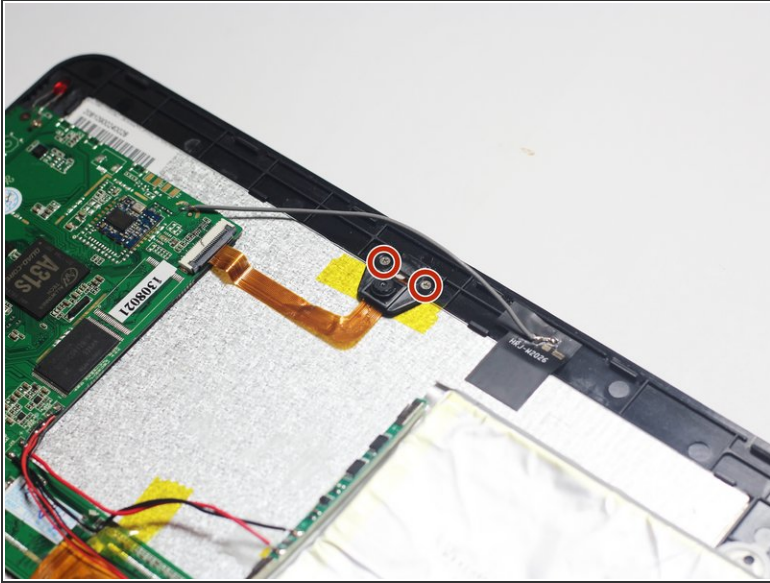
- Remove the Battery
 - The battery is secured to the back panel with tape and glue.
 - Peel back the tape around the battery and discard it.
 - Tear through the adhesive holding the battery by using the spudger tool.

Step 5



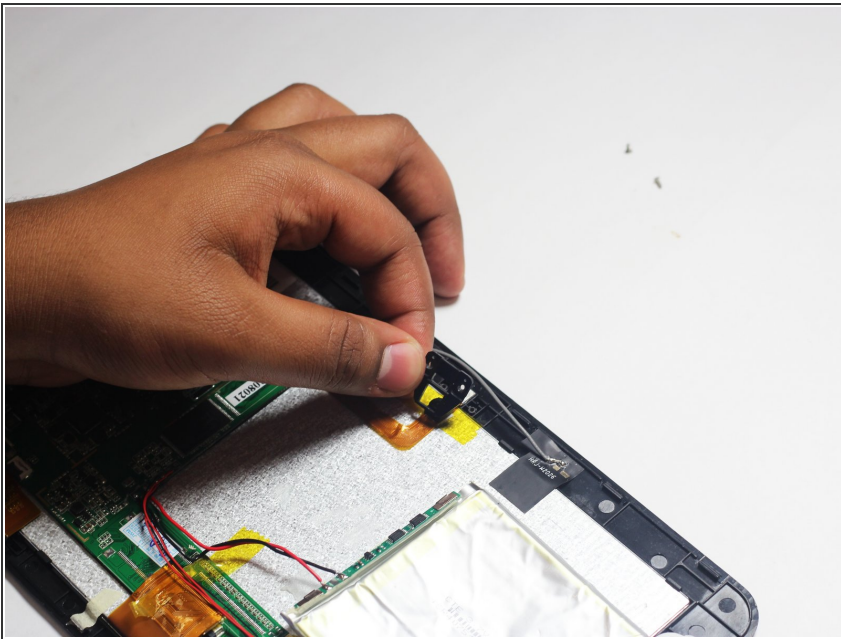
- Desolder the 2 Battery Wires
 - The Battery has two wires connected to the motherboard (one black and one red).
 - ☞ If you're unfamiliar with soldering or desoldering check out [this guide](#).
 - ⚠ Be sure to wear protective eye wear. The soldering iron will become extremely hot and a potential danger, so make sure you are aware of your surroundings.

Step 6 — Rear Facing Camera



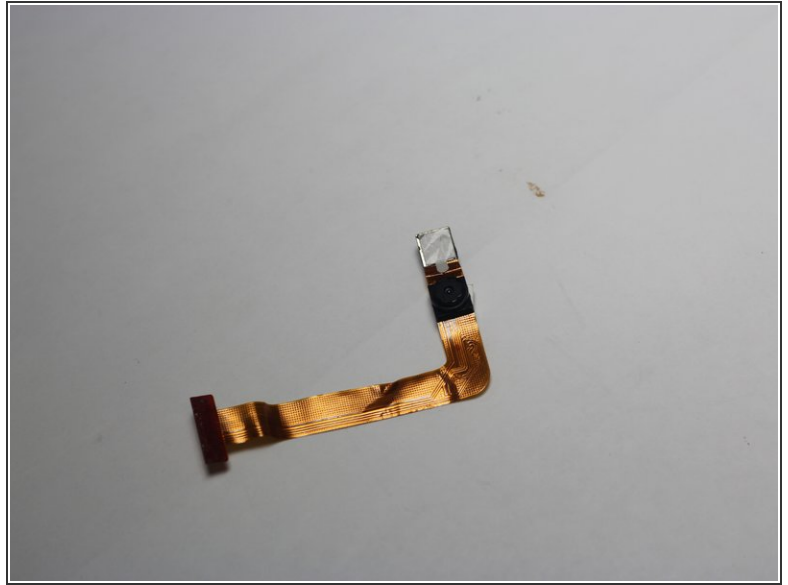
- Remove the two Phillips #00 screws attaching the housing of the camera to the device.

Step 7



- With the screws removed you should easily be able to remove the camera unit.

Step 8



- Follow the camera unit back to the motherboard.
- Use the spudger tool to remove the camera.

To reassemble your device, follow these instructions in reverse order.