



SuperSonic Matrix Mid SC-999 Screen Sensor Replacement

In this guide, you will learn out to replace a screen sensor.

Written By: Logan Robinson





TOOLS:

- [Phillips #0 Screwdriver](#) (1)
-

Step 1 — Revoming the Camera



- Use the [Camera Replacement Guide](#)

Step 2 — Taking Out the First Screw



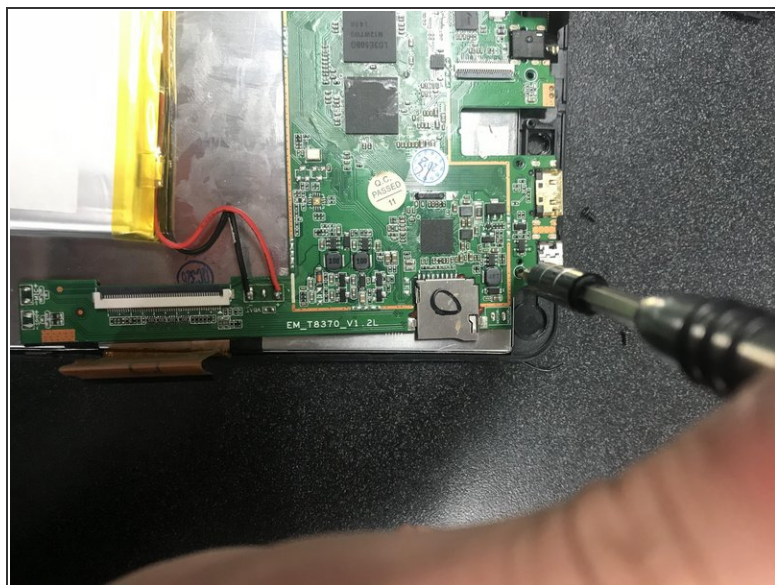
- Find the first screw at the top left underneath the gold film and use a J0 Phillips Head screwdriver to unscrew it.

Step 3 — Taking Out the Second Screw



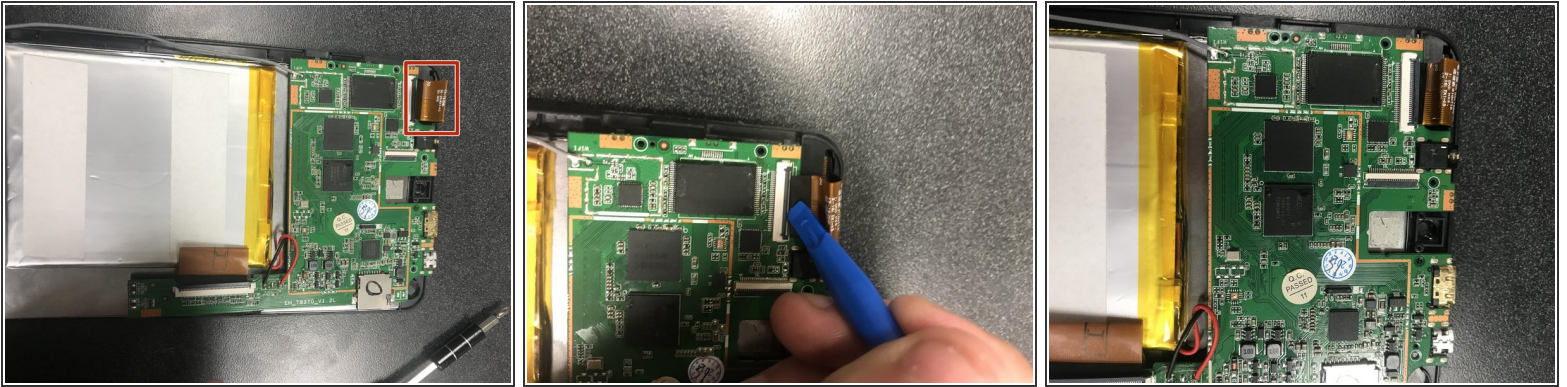
- Find the second screw located above the white and grey box for the film for the camera and use the same screwdriver from step two to unscrew it.

Step 4 — Taking Out the Third Screw



- Find the third screw at top right corner below the USB port and use the same screwdriver from the previous two steps.

Step 5 — Removing Gold Film Pt. 1



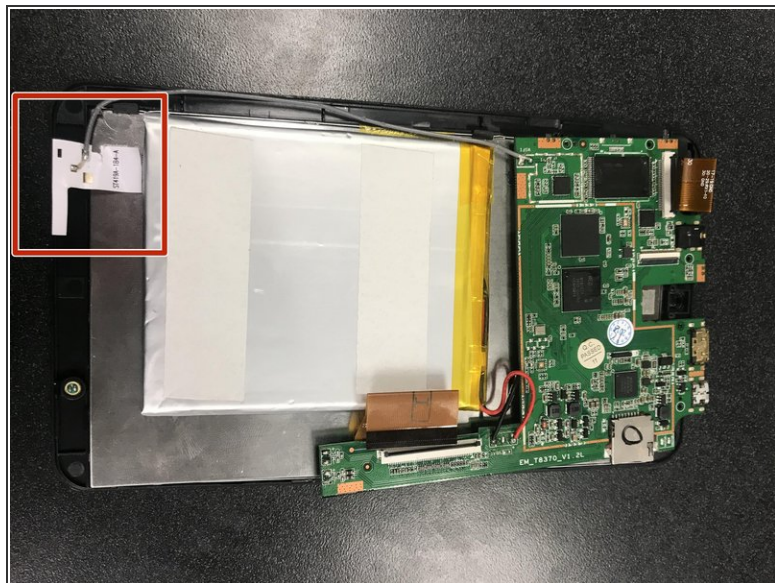
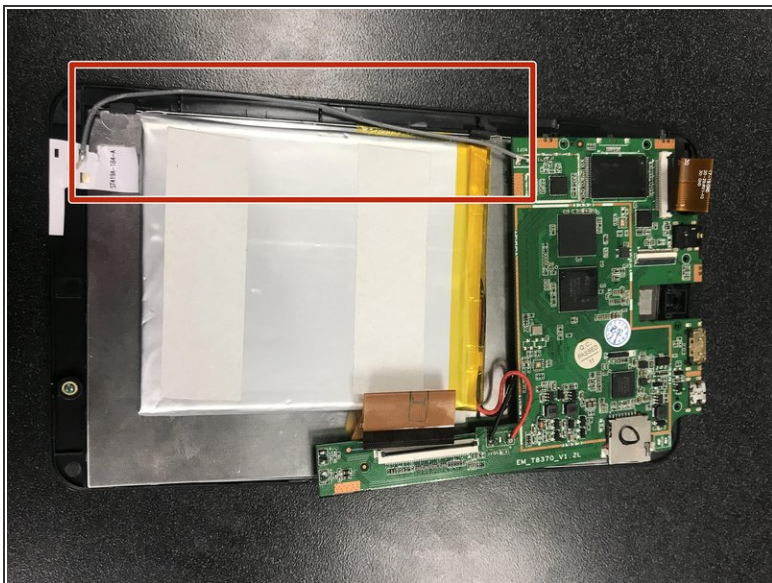
- Find the gold film at the top left of the tablet, connect to the screen.
- Refer to step six in the [camera replacement guide](#) to remember how to open and pull out the gold film

Step 6 — Removing Gold Film Pt. 2



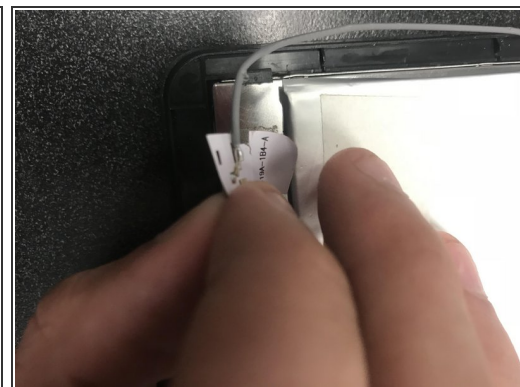
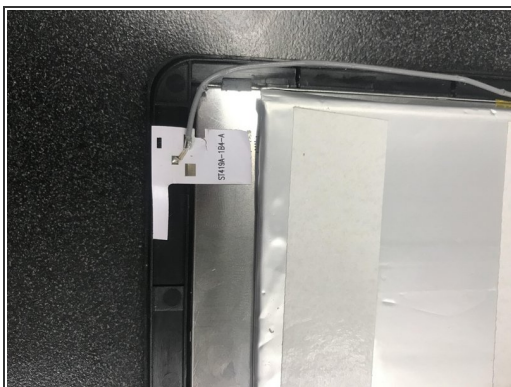
- Find the gold film on the bottom right, connected to the screen sensor.
- Use the method from the previous step to disconnect the gold film.

Step 7 — Finding the Grey Wire



- Find the grey wire that connects at the green plate (The Motherboard) and at the bottom of the Screen Sensor.
- The wire is connected by a white sticker to the Screen Sensor

Step 8 — Peeling the Sticker Off



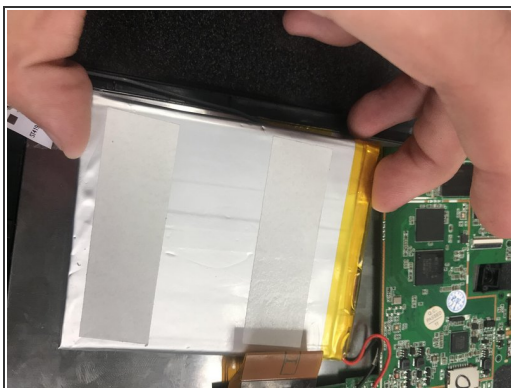
- Carefully peel the sticker off the back of the screen sensor. DO NOT RIP THE STICKER!!

Step 9 — Finding the Battery



- Look under the motherboard to find the battery. There will be yellow tape and black and red wires on the top of the battery.

Step 10 — Removing the Battery



- Carefully pull up on the edges of the battery with your hands. The motherboard will come with it.

Step 11 — Removing the Screen Sensor



- Use the wedge from the camera replacement guide to go in between the silver lining of the Screen Sensor and Screen of the tablet.

To reassemble your device, follow these instructions in reverse order.