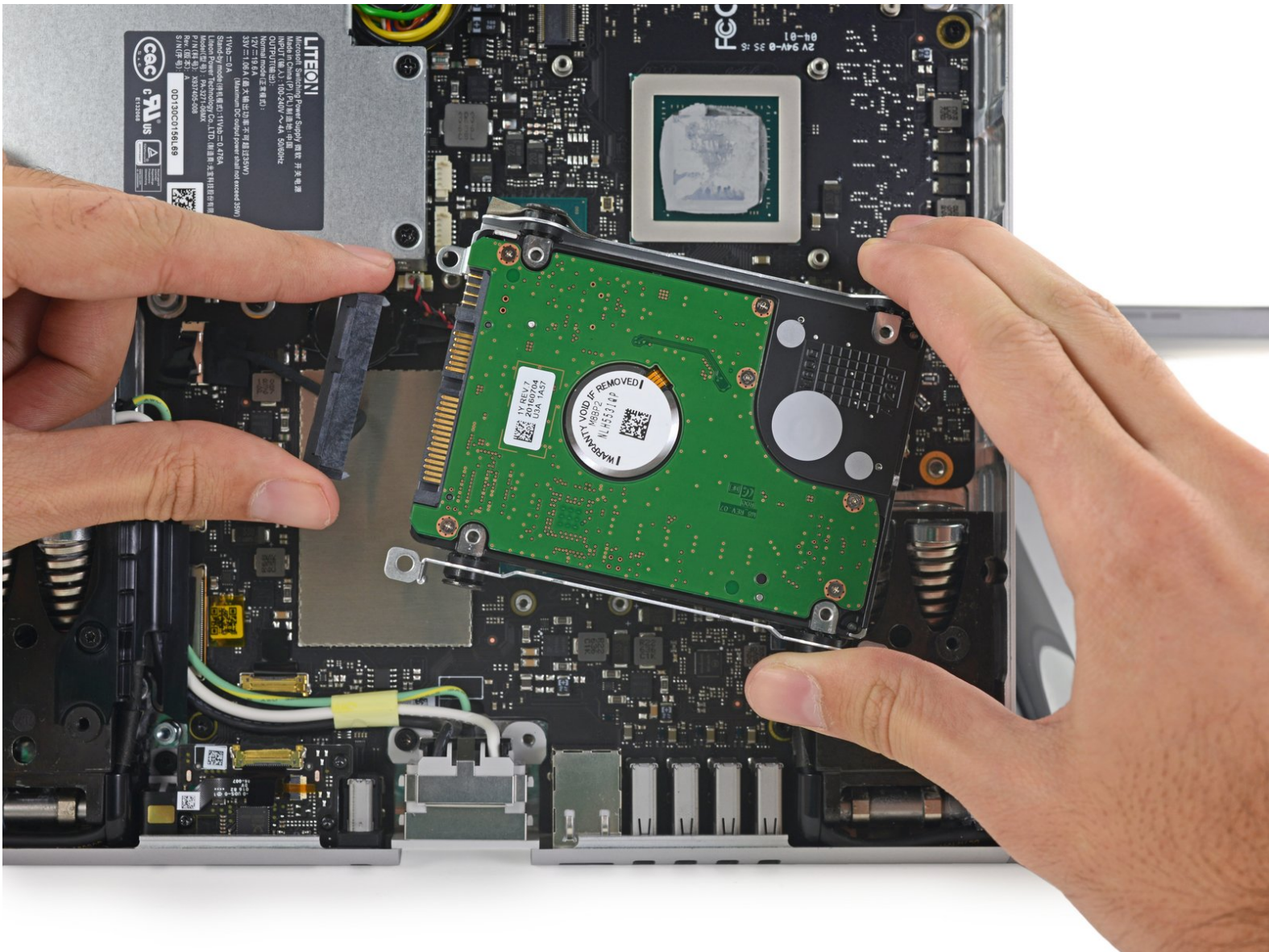




Surface Studio 2.5" Hard Drive Replacement

This guide shows you how to replace the 2.5" hard drive in the Surface Studio

Written By: The Raptor



INTRODUCTION

Do you want a bigger hard drive or a second SSD? Follow this guide to replace your hard drive.



TOOLS:

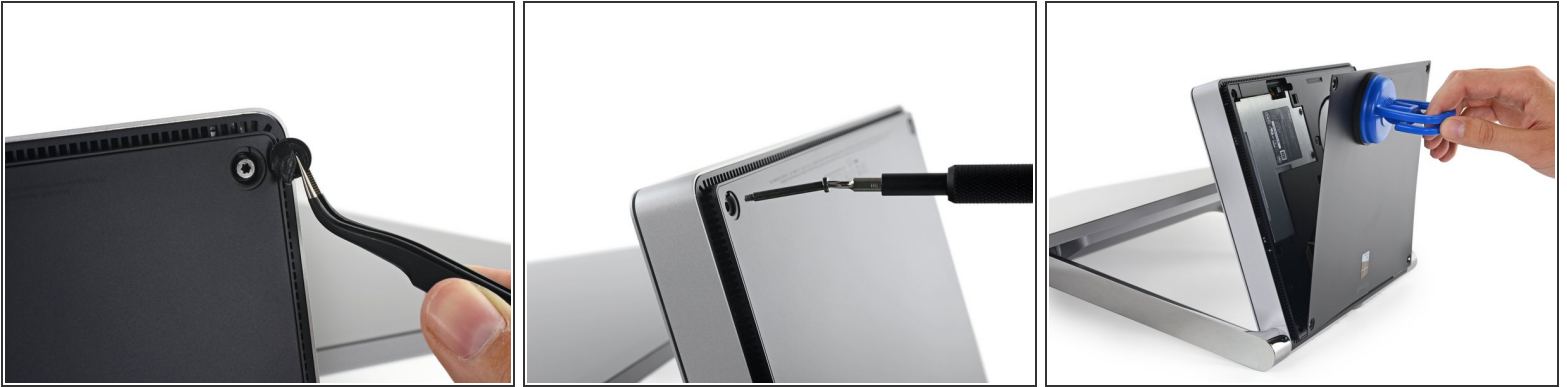
- [Tweezers](#) (1)
- [T6 Torx Screwdriver](#) (1)
- [T8 Torx Screwdriver](#) (1)
- [5mm Nut Driver](#) (1)
- [Heavy-Duty Suction Cups \(Pair\)](#) (1)
- [iFixit Opening Tools](#) (1)




PARTS:

- [1 TB SSD / Upgrade Bundle](#) (1)
- [250 GB SSD / Upgrade Bundle](#) (1)
- [500 GB SSD / Upgrade Bundle](#) (1)
- [2 TB SSD / Upgrade Bundle](#) (1)

Step 1 — 2.5" Hard Drive

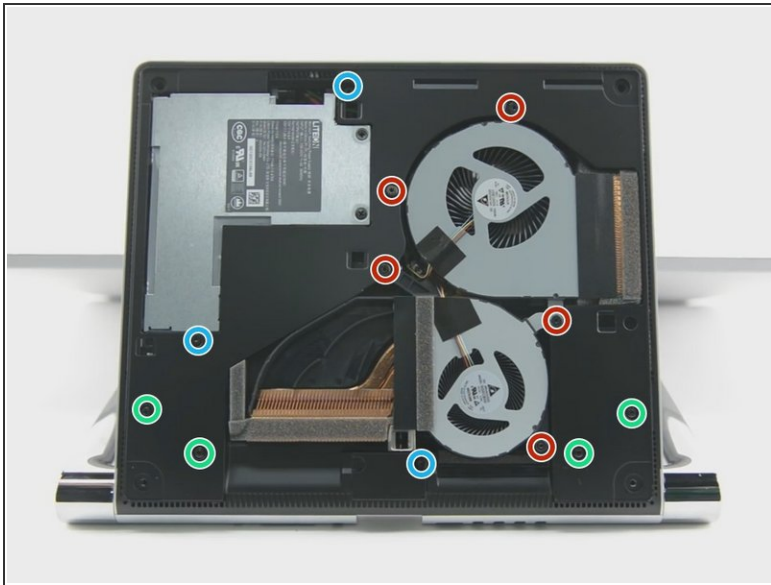


- Lay the Surface face down on a padded surface

 Be careful not to scratch the screen when laying it face down

- Remove the four rubber feet at each corner concealing the Torx screws
- Remove the four Torx screws under the rubber feet.
- Two screws on the upper corners are longer than two screws on the lower corners.
- Attach suction cups to the bottom cover and then pull on the suction cups to free the bottom cover.

Step 2



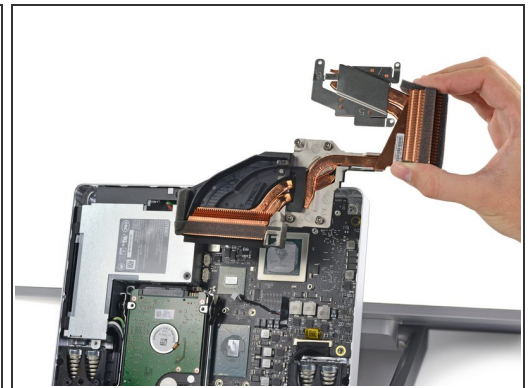
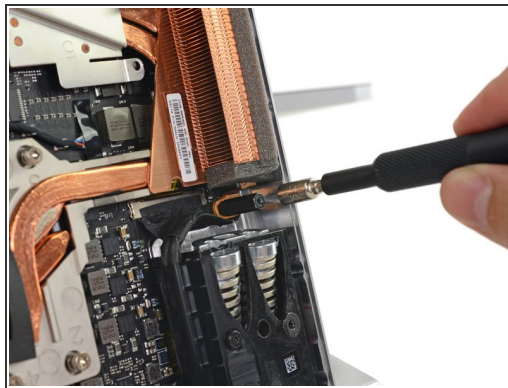
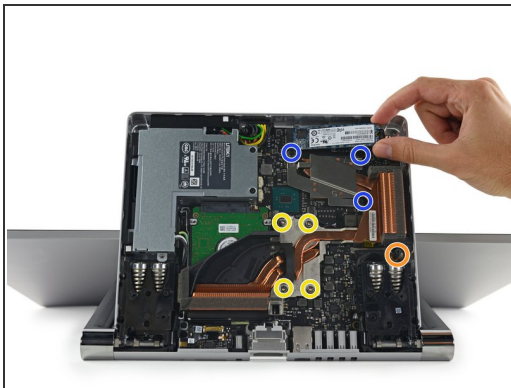
- Remove five torx screws holding the two fans to the midframe
- Remove the two fans
- ⓘ The fan connectors are behind the midframe and not yet accessible. Let the fans hang loosely until you can access the connectors.
- ⓘ Four large torx screws and four small torx screws hold the midframe to the upper frame.
- Remove four large torx screws holding the midframe
- Remove four small torx screws holding the midframe

Step 3



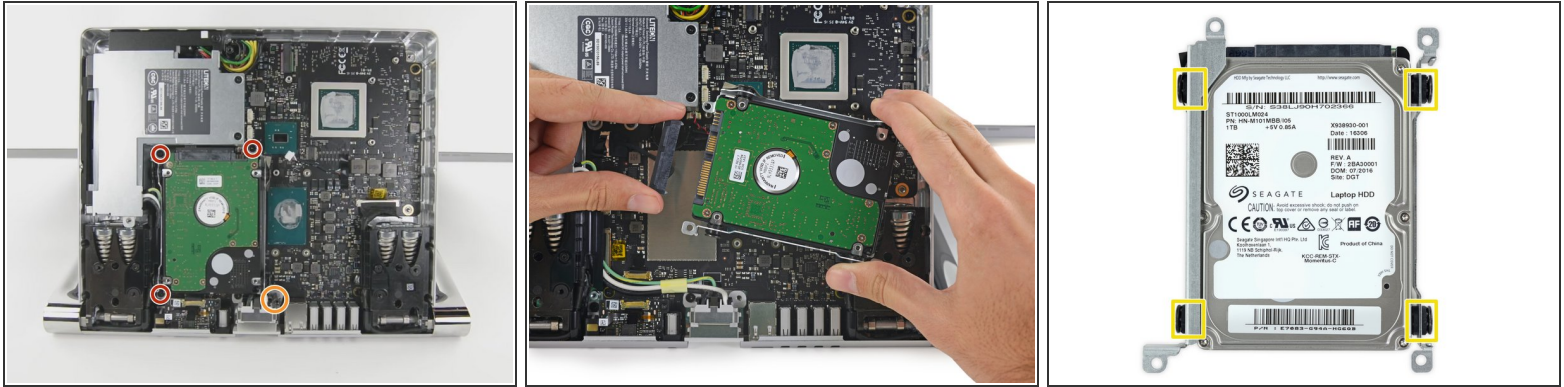
- Slowly remove the midframe
- ⚠ Be careful: the speaker on the midframe is still attached to the motherboard
- Detach the connectors for the two fans and the speaker

Step 4



- ⓘ With the midframe removed, it is also possible to replace the M.2 SSD during this step
- ⓘ The hard drive is underneath the heatsink so the heatsink must be removed
- Remove four spring loaded torx screw labeled 1 to 4
- Remove three torx screw labeled 5 to 7
- Remove 5mm hex mounting post
- Use a spudger to remove the heatsink assembly from the motherboard

Step 5



- Remove three torx screws holding the hard drive brackets
 - Remove 5mm hex mounting post
 - Remove the hard drive and disconnect the SATA/SATA power cable
 - Remove four torx screws holding the hard drive brackets to the hard drive
- ★ On reassembly, be sure to clean the CPU and GPU and heat sink and reapply thermal compound to the CPU and GPU

To reassemble your device, follow these instructions in reverse order.