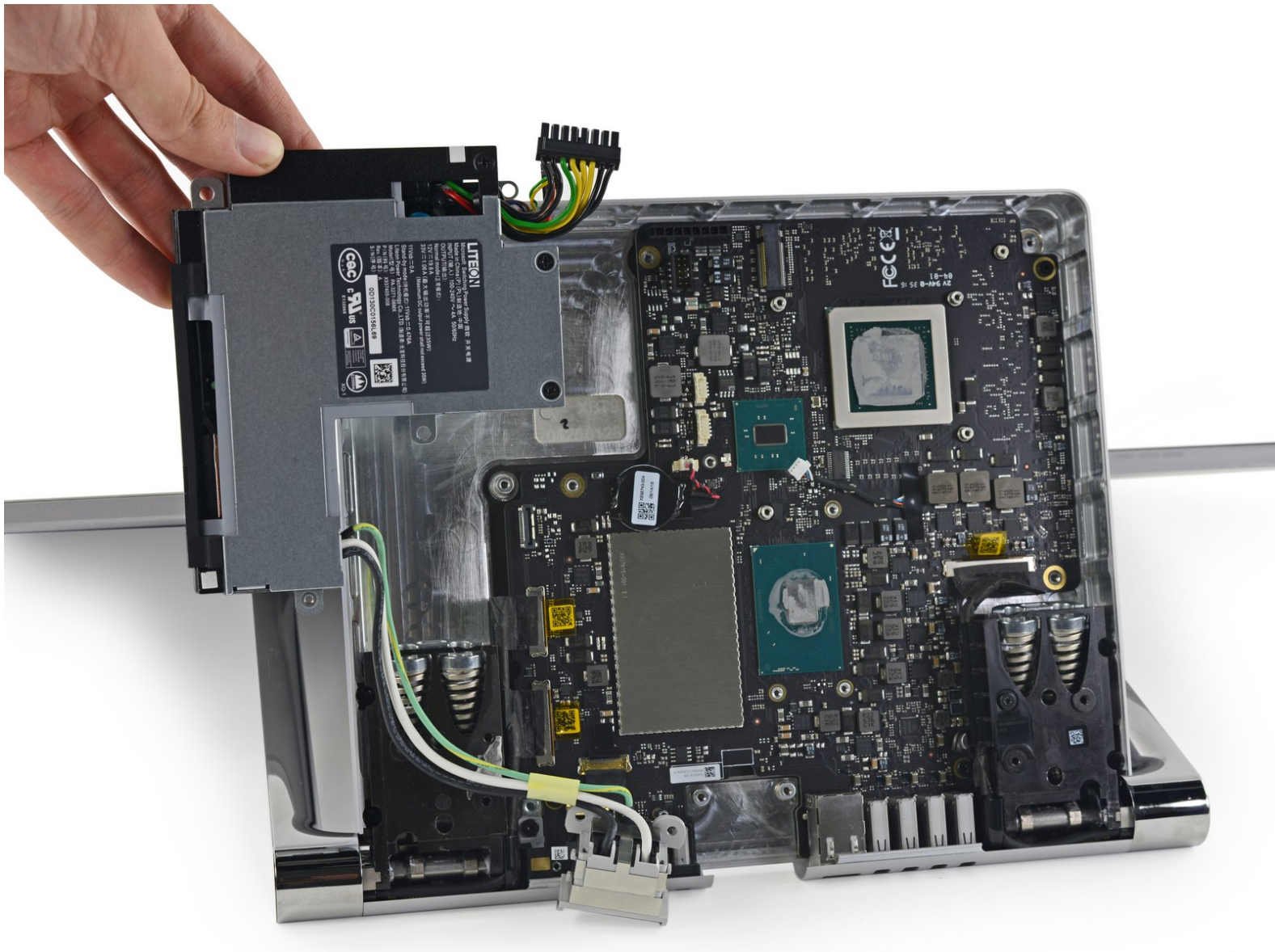




Surface Studio Power Supply Unit Replacement

This guide shows you how to replace the power supply unit in the Surface Studio

Written By: The Raptor



INTRODUCTION

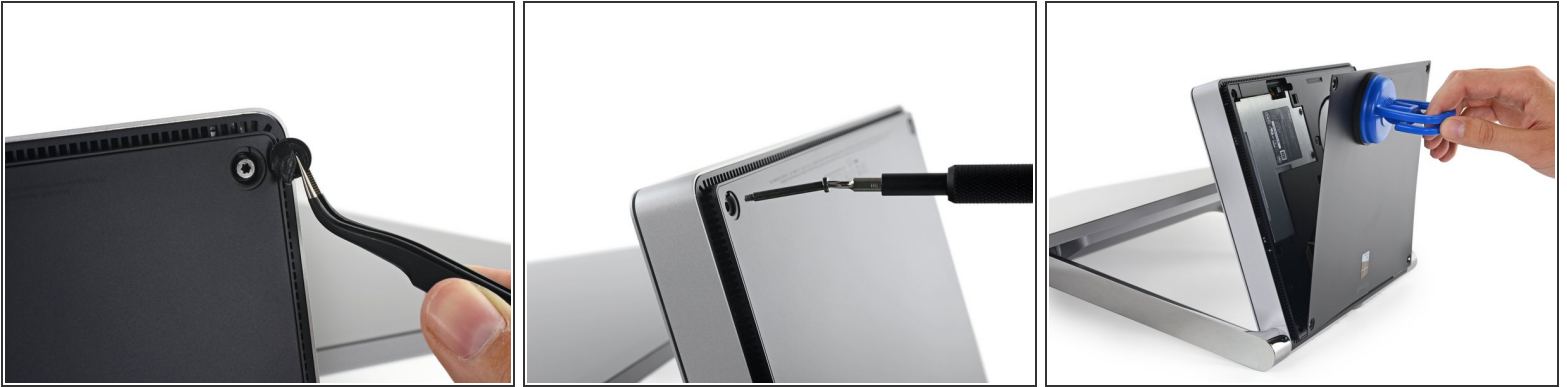
Follow this guide to replace your power supply unit




TOOLS:

- [Tweezers](#) (1)
 - [T6 Torx Screwdriver](#) (1)
 - [T8 Torx Screwdriver](#) (1)
 - [5mm Nut Driver](#) (1)
 - [Heavy-Duty Suction Cups \(Pair\)](#) (1)
 - [iFixit Opening Tools](#) (1)
 - [Phillips #0 Screwdriver](#) (1)
-

Step 1 — Power Supply Unit

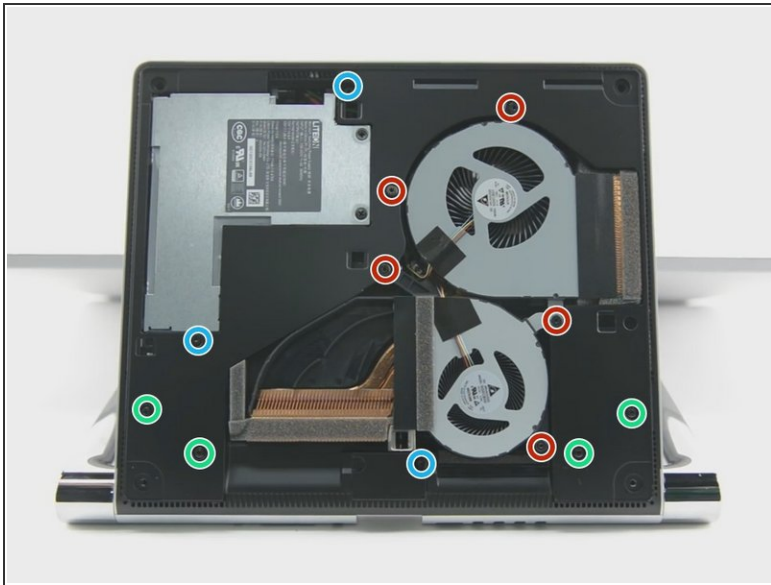


- Lay the Surface face down on a padded surface

 Be careful not to scratch the screen when laying it face down

- Remove the four rubber feet at each corner concealing the Torx screws
- Remove the four Torx screws under the rubber feet.
- Two screws on the upper corners are longer than two screws on the lower corners.
- Attach suction cups to the bottom cover and then pull on the suction cups to free the bottom cover.

Step 2



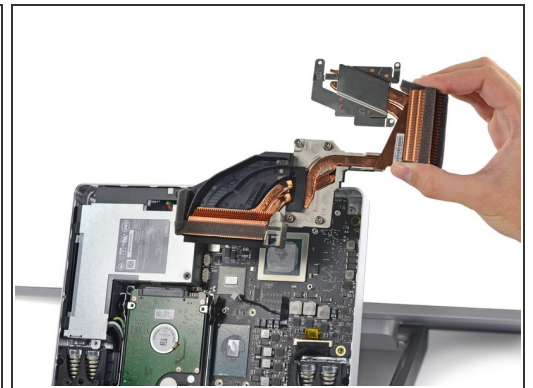
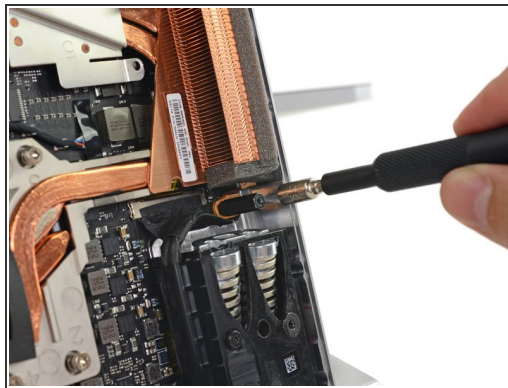
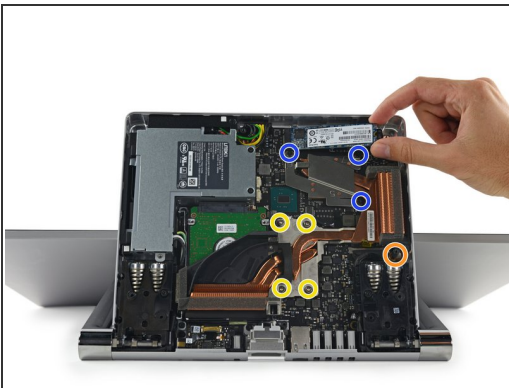
- Remove five torx screws holding the two fans to the midframe
- Remove the two fans
- ⓘ The fan connectors are behind the midframe and not yet accessible. Let the fans hang loosely until you can access the connectors.
- ⓘ Four large torx screws and four small torx screws hold the midframe to the upper frame.
- Remove four large torx screws holding the midframe
- Remove four small torx screws holding the midframe

Step 3



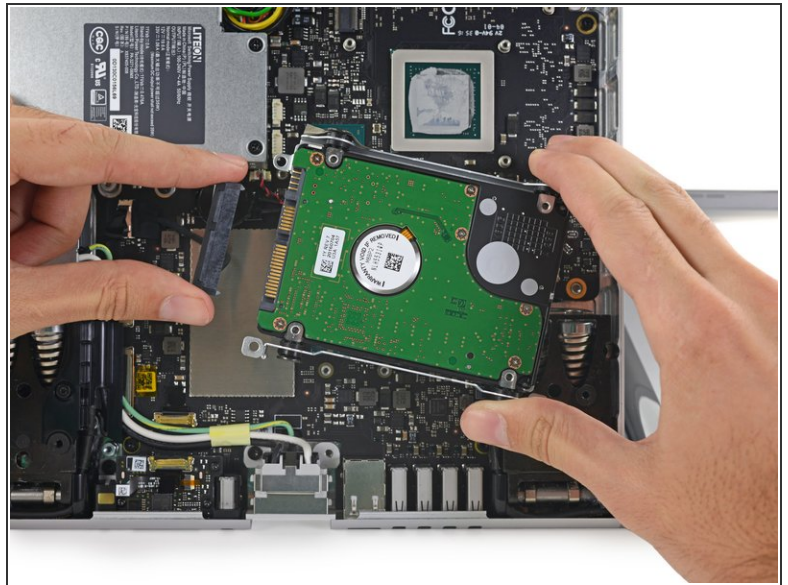
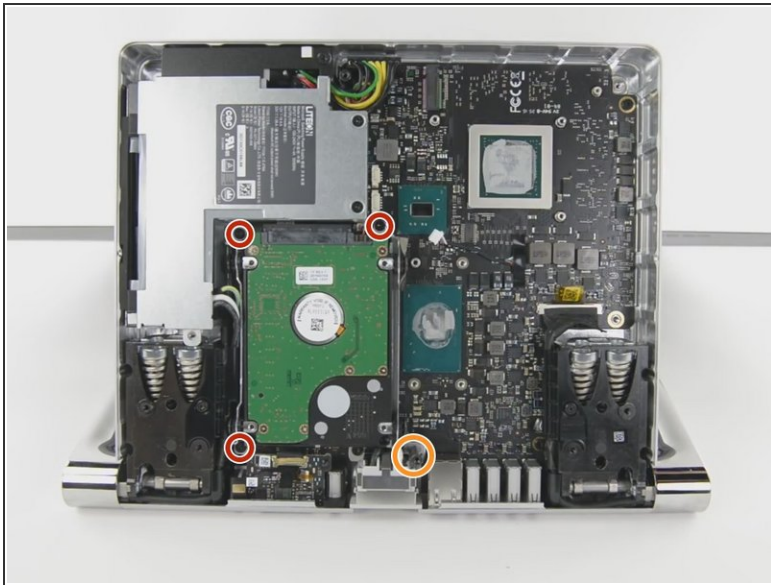
- Slowly remove the midframe
- ⚠ Be careful: the speaker on the midframe is still attached to the motherboard
- Detach the connectors for the two fans and the speaker

Step 4



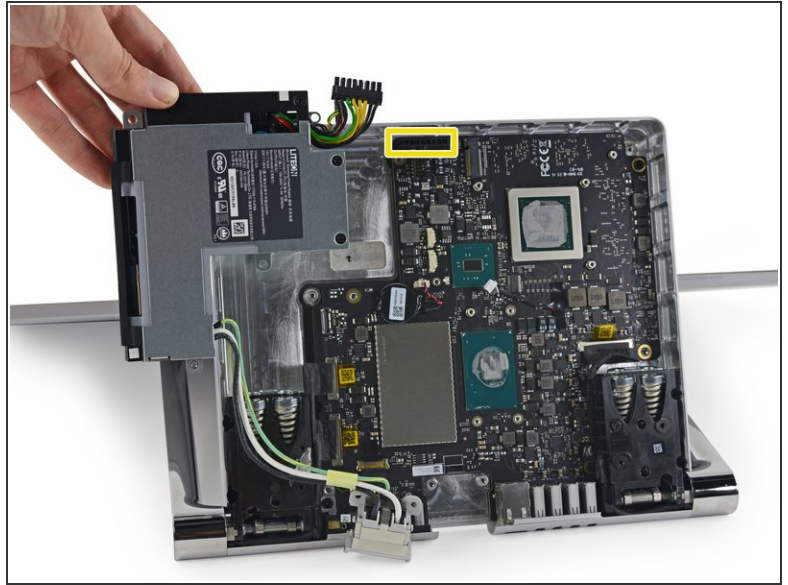
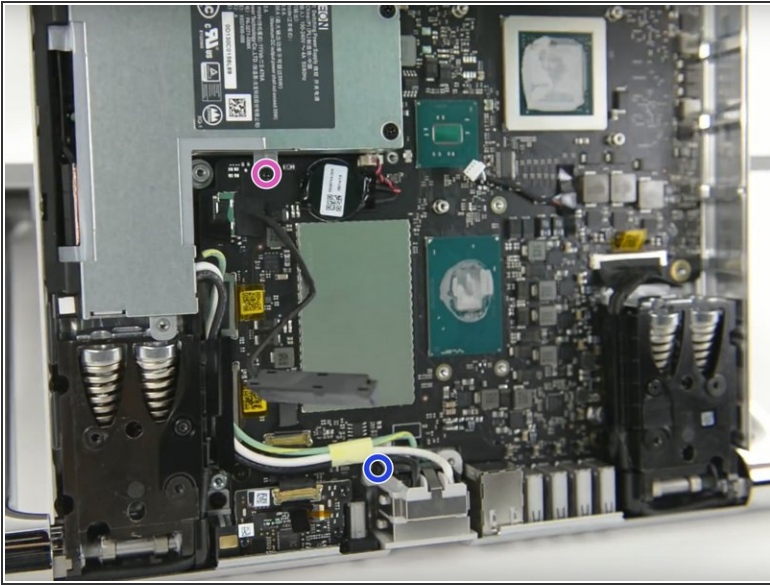
- ⓘ A screw retaining the power supply is under the hard drive so both the hard drive and the heat sink assembly must be removed
- Remove four spring loaded torx screw labeled 1 to 4
- Remove four torx screw labeled 5 to 7
- Remove 5mm hex mounting post
- Use a spudger to remove the heatsink assembly from the motherboard

Step 5



- Remove three torx screws holding the hard drive brackets
- Remove 5mm hex mounting post
- Remove the hard drive and disconnect the SATA/SATA power cable

Step 6



- Remove a Phillips screw still retaining the power supply
- Remove a torx screw retaining the power supply cable
- Unplug the power supply from the motherboard
- Lift the power supply up and away from the base unit

To reassemble your device, follow these instructions in reverse order.