



Surfboard Fin Replacement

Replace a broken box fin on a surfboard.

Written By: Hudson Albert



INTRODUCTION

Does your surfboard have a broken or loose fin? This guide will help you replace your surfboard fin to get you back on the water in no time!



TOOLS:

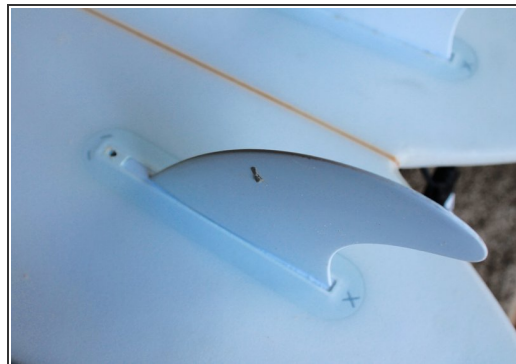
- [Surfboard Fin Key](#) (1)



PARTS:

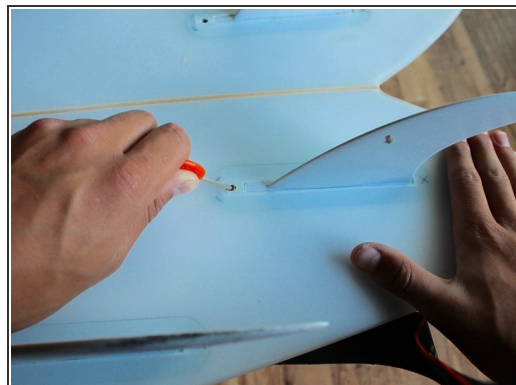
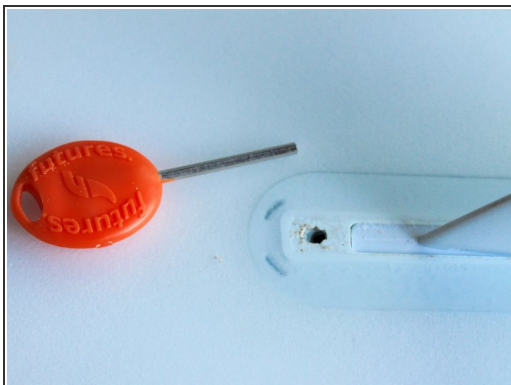
- [Surfboard Fin](#) (1)

Step 1 — Fin



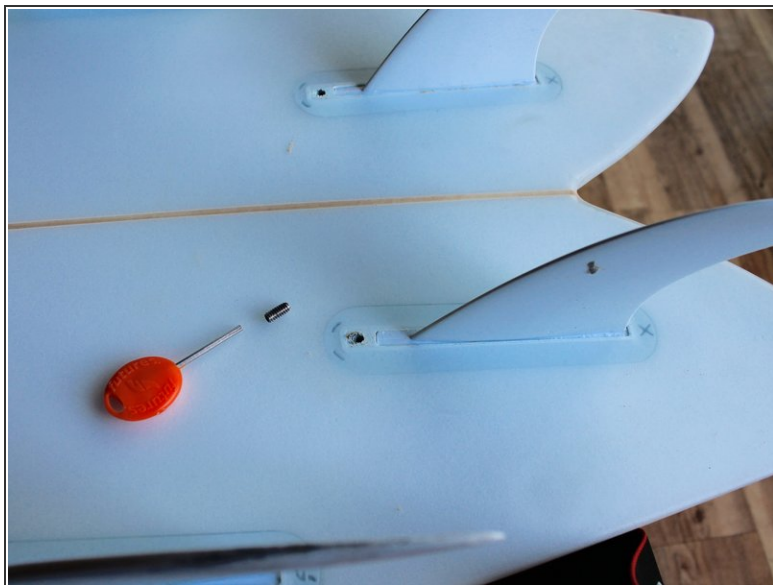
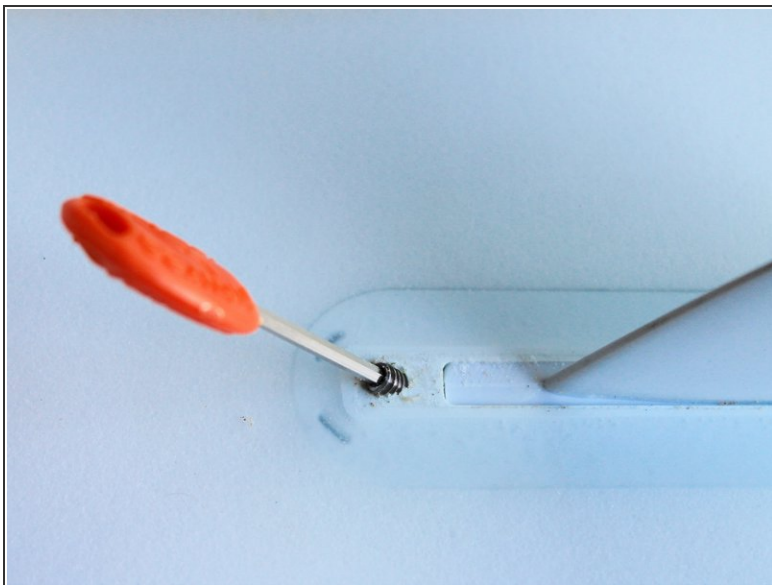
- Lay your surfboard down on a flat, durable surface long enough to support the length of your board.

Step 2



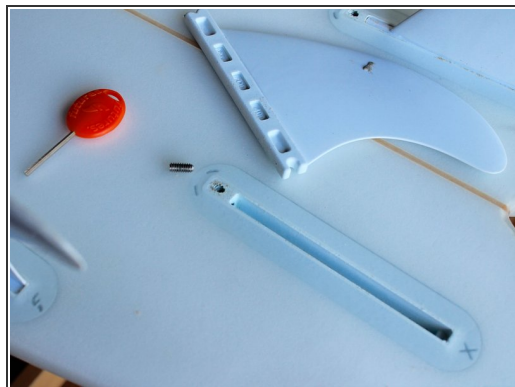
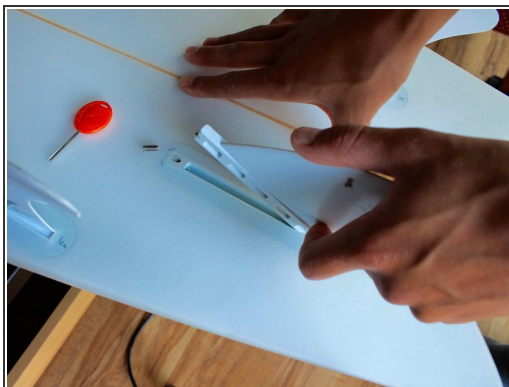
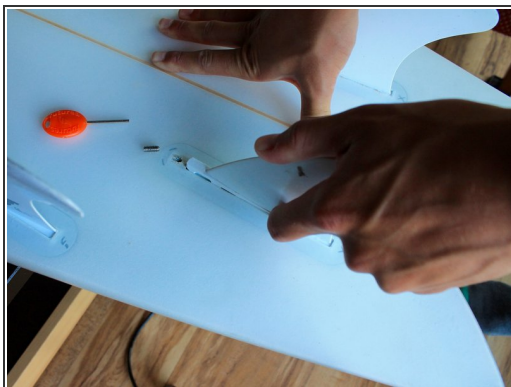
- Make sure the small screw hole in front of the fin is free of debris and sand.
- Insert the key into the hole and begin turning counter-clockwise to loosen the screw inside.

Step 3



- Continue turning counter-clockwise until the screw is free.

Step 4



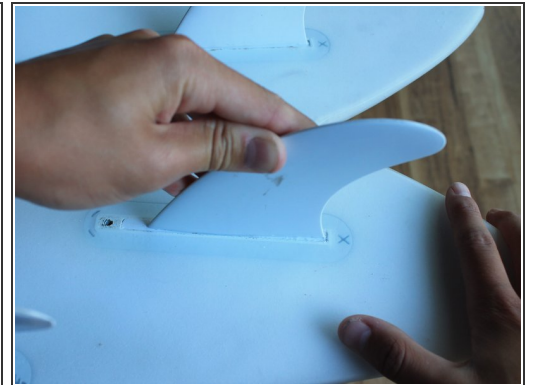
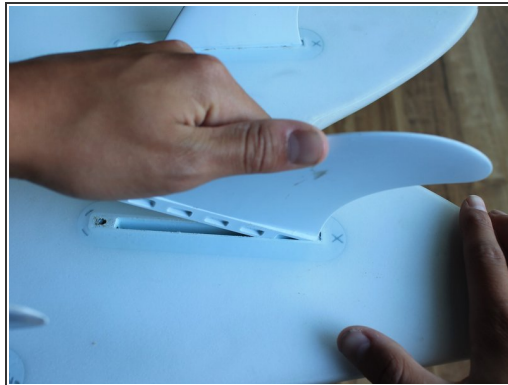
- Firmly grasp the fin with one hand and place your other hand on the surfboard for stabilization.
- Simultaneously lift the fin while tilting it backwards to remove the fin.

Step 5



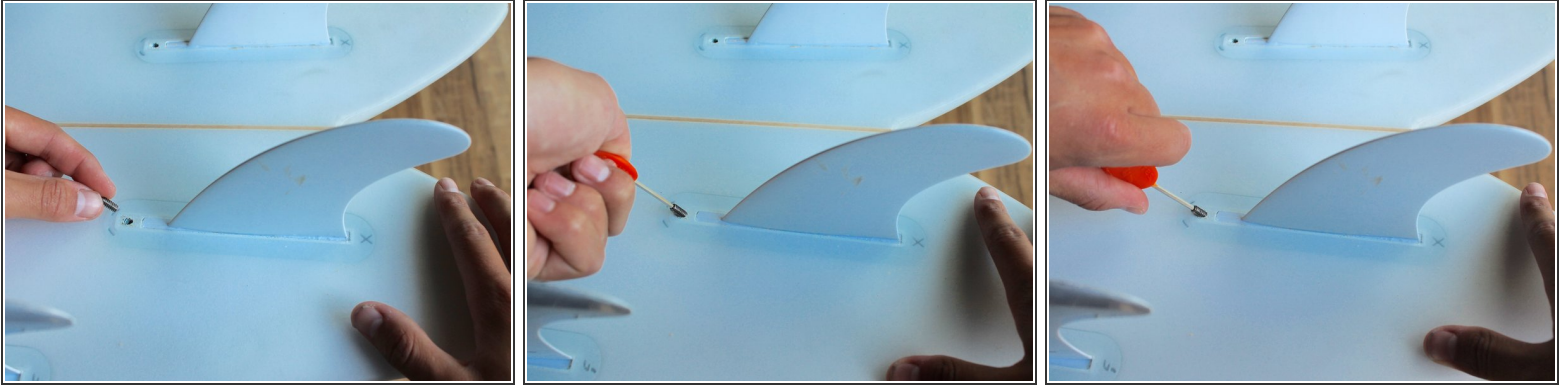
- i** Notice the circular inlet on the rear bottom side of the fin. This inlet of the fin fits snugly into the little rod located in the back of the fin slit on the board, much like a puzzle.

Step 6



- With your new or repaired fin, insert the back in first so that you feel the inlet on the fin clip into the little rod in the slit.
- Once you feel the back secure, bring the front of the fin down into the slit.

Step 7



- Place the screw back into the hole and begin turning clockwise using the key.
 - Continue turning until the screw is tight and won't turn any more.
- ⚠ Once the screw stops turning, do not continue to tighten or you may damage the screw or fin.

Step 8



- ⓘ Make sure the screw can no longer be seen.
- Wiggle your fin gently to test for looseness, and you have successfully replaced your surfboard fin.