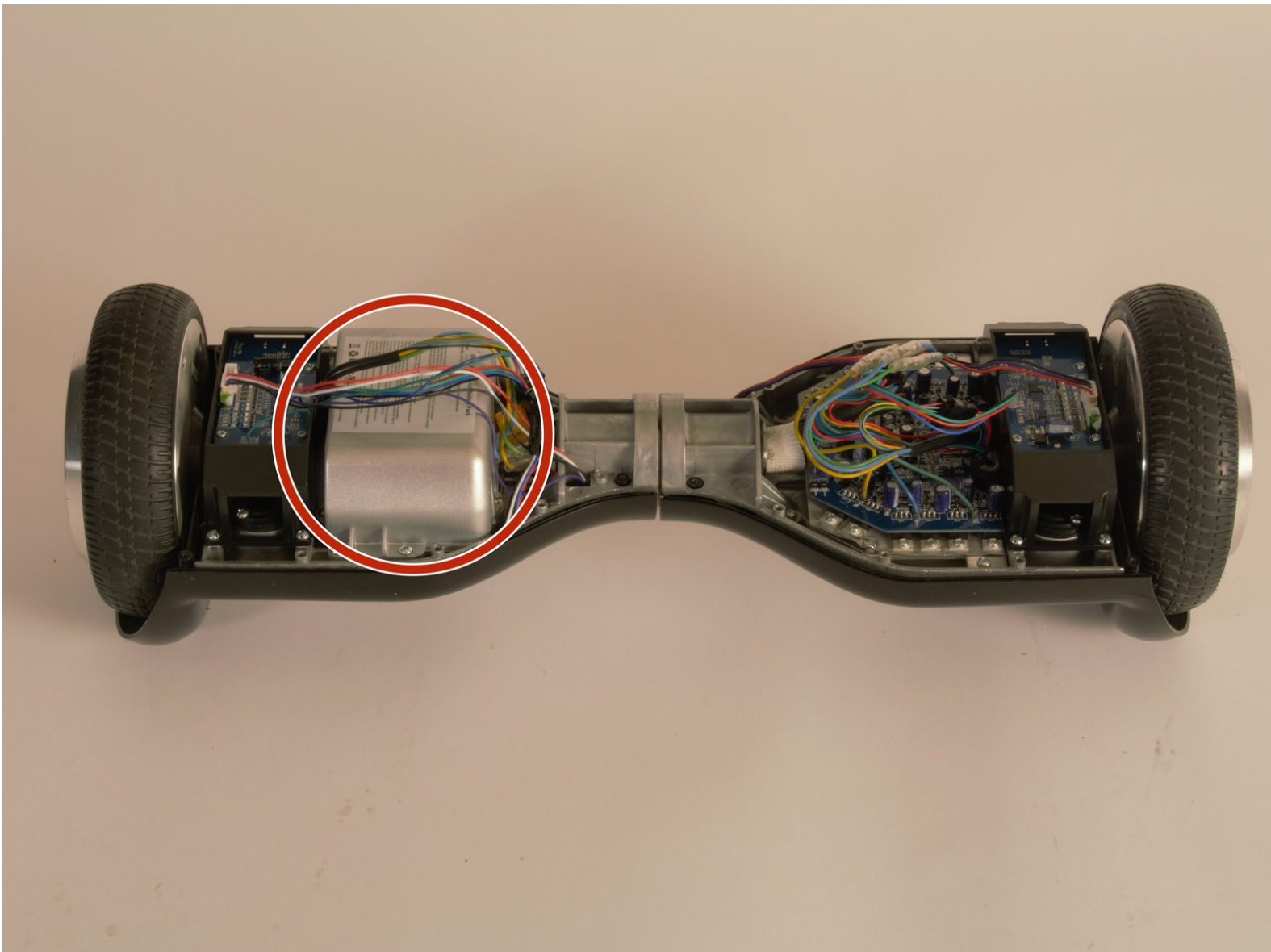




# SwagTron T1 Battery Replacement

How to replace the battery of a SwagTron T1 hoverboard.

Written By: Adrian Abarca



## INTRODUCTION

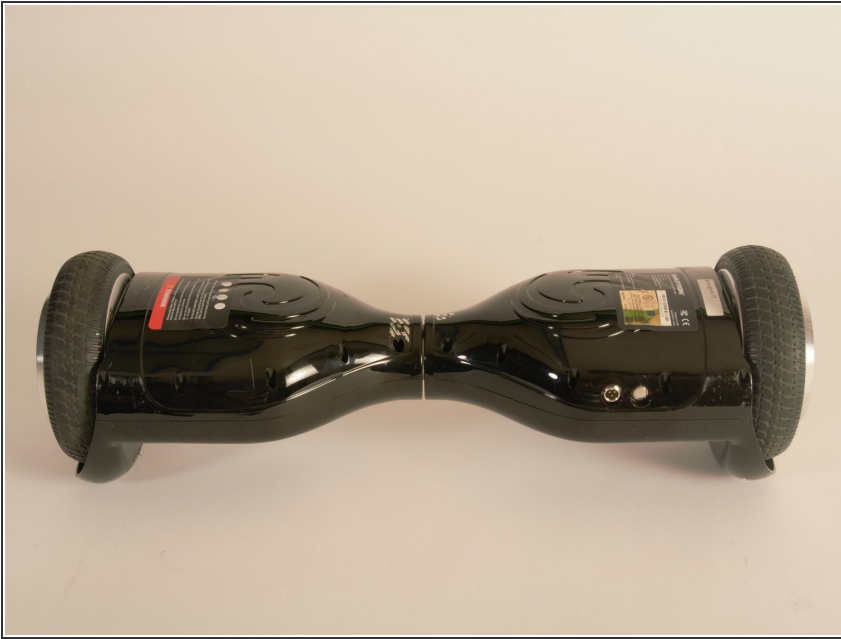
This guide will outline how to replace the battery of your SwagTron T1 Hoverboard. This may be necessary if the battery is defective or worn out. **Before attempting this replacement, recalibrate your hoverboard.** If the issue persists, continue with this replacement.



### TOOLS:

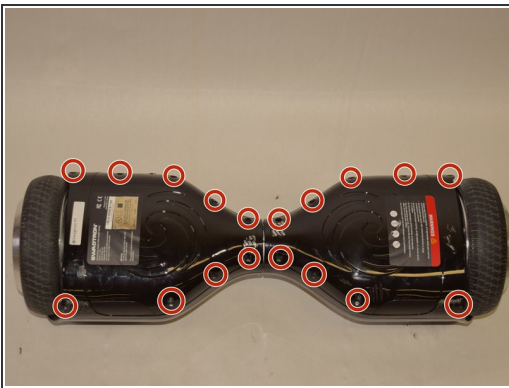
- [Phillips #2 Screwdriver](#) (1)
-

## Step 1 — Back Panels



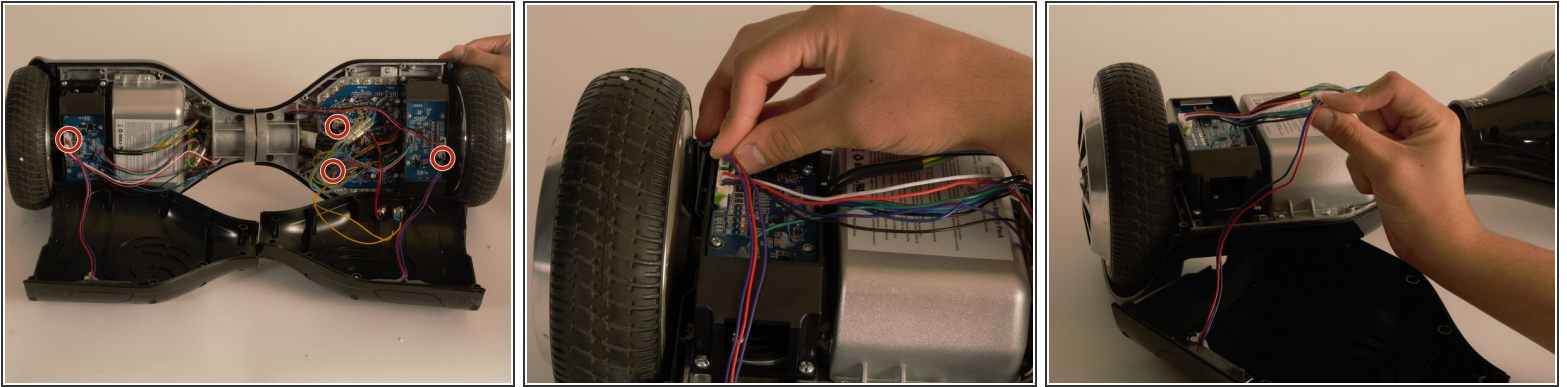
- ⚠ Ensure that the SwagTron is off.
- Turn the SwagTron upside down to see the underside.

## Step 2



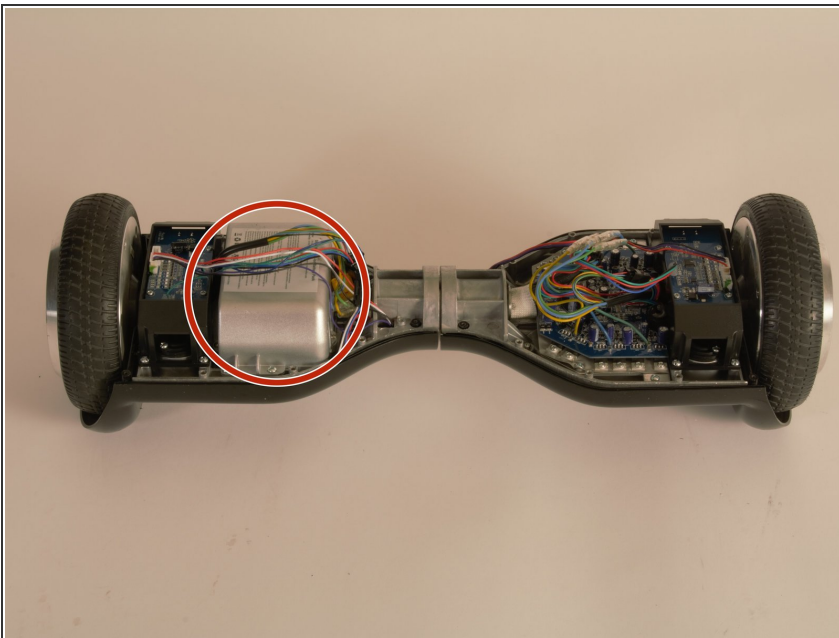
- Unscrew the eighteen 10mm screws that secure the back panels using a Phillips #2 screwdriver.
- ⓘ The screws are tightly in place. It will take effort to screw them out.
- ⚠ The panel is still attached to the SwagTron by wires that go to the motherboard.
- Carefully lift the panels off

### Step 3



- Follow the wires from the panels to the motherboard.
  - You may need to cut any zip ties that are holding the wires together.
  - There is one connection on the battery side and three on the other side that must be removed.
- ⚠ These connections may be difficult to remove. Try to securely press the connection and pull firmly.
- Your back panels are now completely removed.

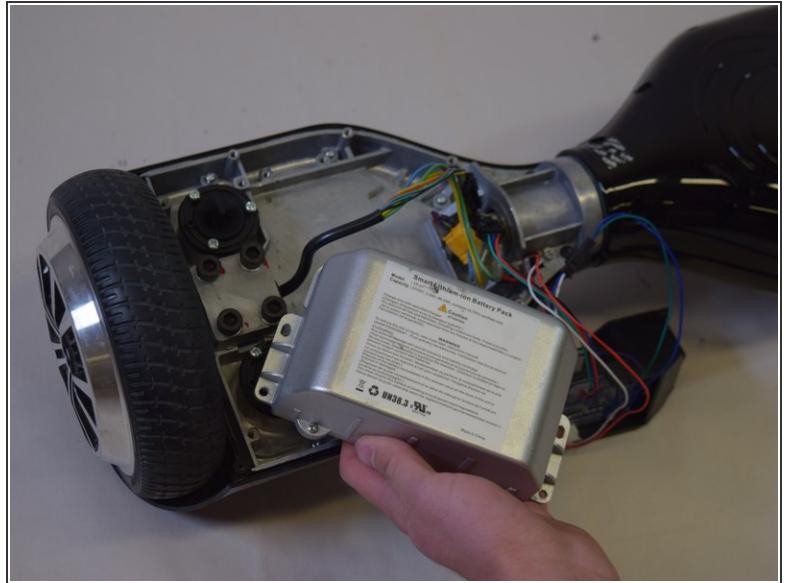
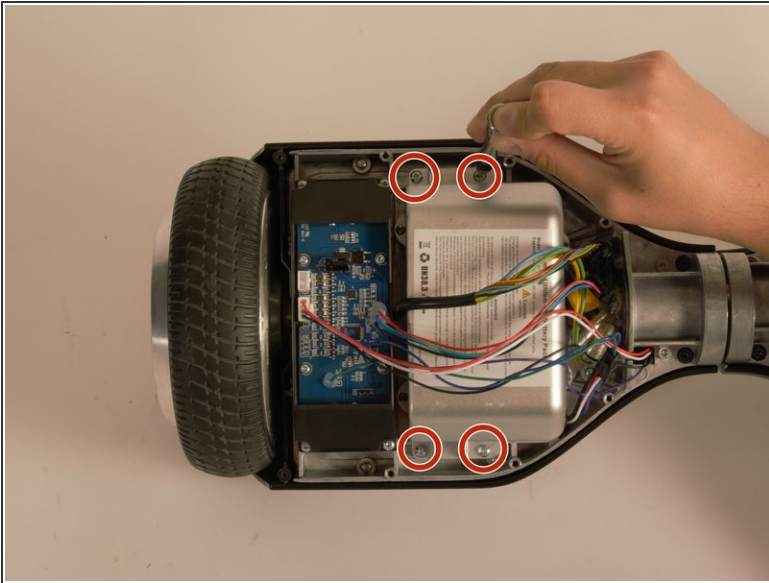
### Step 4 — Battery




- Your SwagTron should look like this once the back panels are removed.
- The battery is located on the left side as shown.




## Step 5

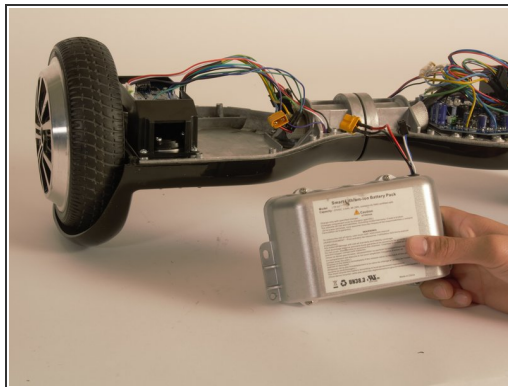
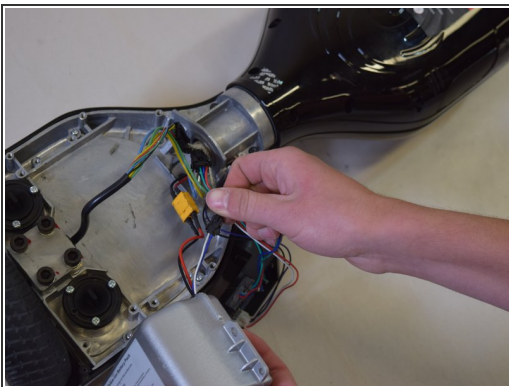


- Unscrew the four 10mm screws that secure the battery using a Philips #2 screwdriver.

 The screws may be tightly in place. If so, use some effort to unscrew them.

 The battery is still connected to two wires that go to the motherboard.

## Step 6



- Disconnect the two wires that come from the battery from the wires coming from the hoverboard.
- There are only two connections that need to be separated.
- The battery should be completely removed from the hoverboard.

To reassemble your device, follow these instructions in reverse order.