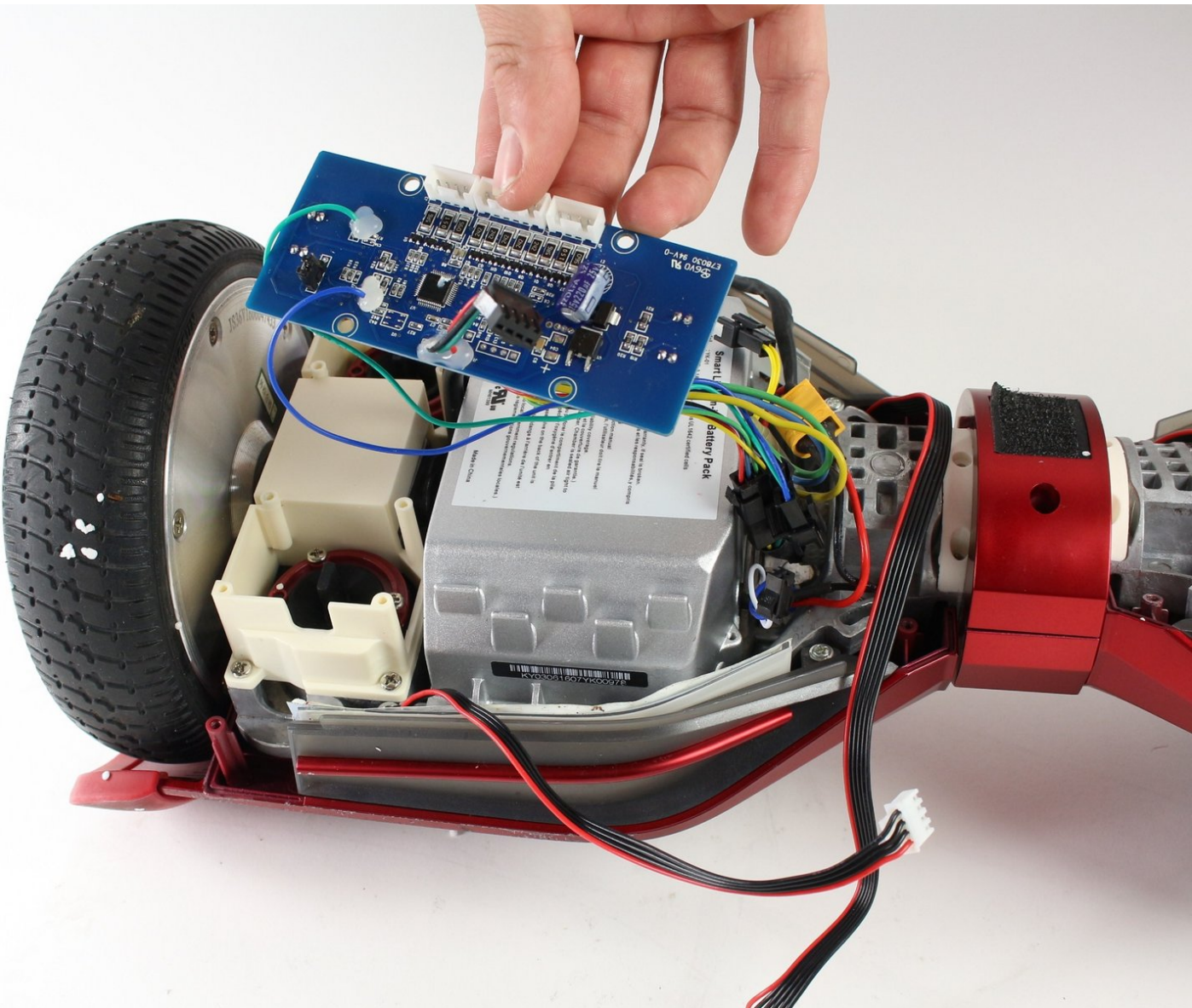




# Swagtron T3 Gyroscope Replacement

Replace the gyroscope so the Swagtron T3 will balance properly.

Written By: Emily Richter



## INTRODUCTION

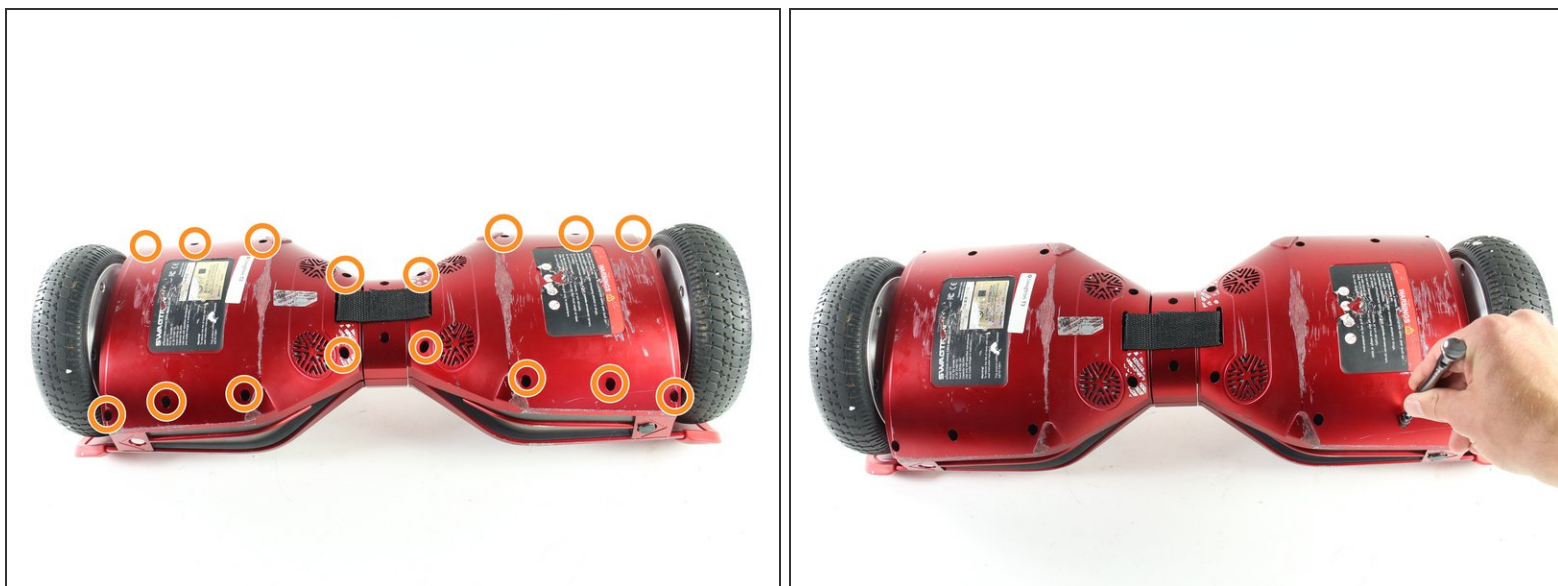
This guide will show you how to replace the gyroscope when your Swagtron T3 is not balancing properly. To avoid electric shock, discharge the capacitors using the capacitor discharge tool before making any changes to your Swagtron.




### TOOLS:

- [Capacitor Discharge Tool](#) (1)
  - [Phillips #1 Screwdriver](#) (1)
  - [Utility Scissors](#) (1)
-

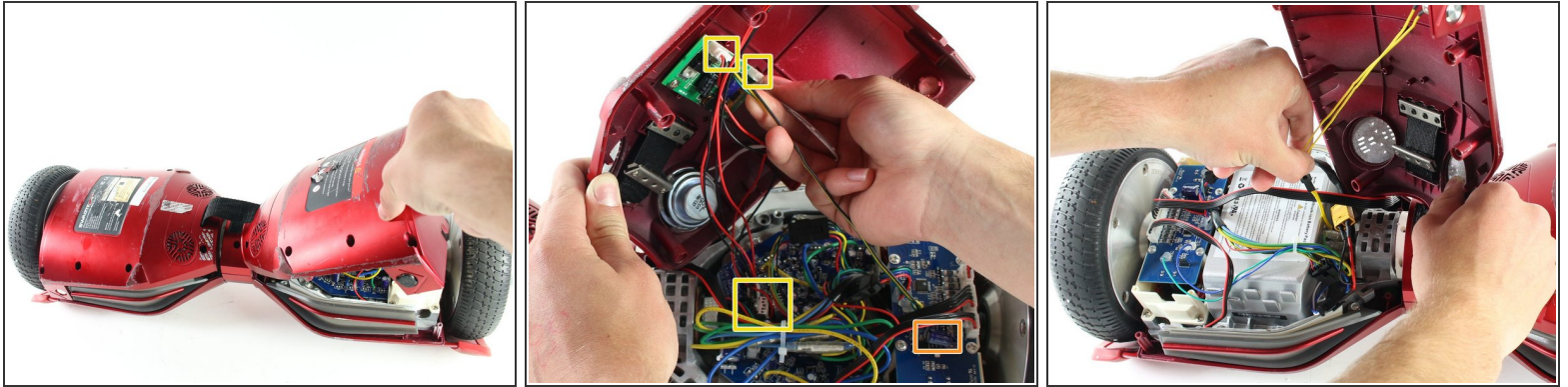
## Step 1 — Cover






 Make sure the hoverboard is completely powered off and unplugged from any outlets.

- Flip the Swagtron so that the footpads are facing the ground.
- Unscrew the sixteen 9.4 mm Phillips #1 machine screws on the side of the Swagtron that is now facing upwards.

## Step 2

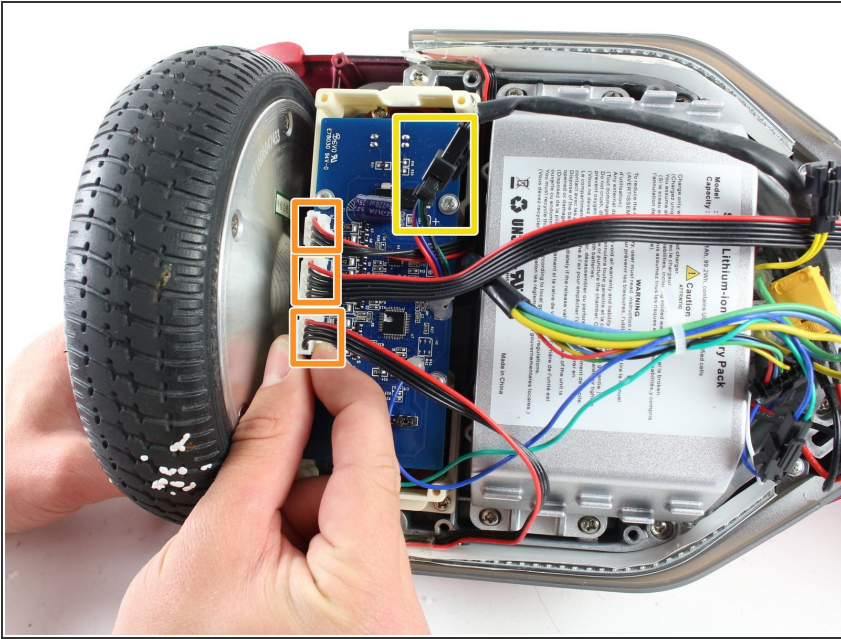


 Be careful with the small blue capacitors indicated by the orange box. There are many of these capacitors in the device.

- Slowly lift the backside cover.
-  Both sides lift up the same way, but the motherboard is under one side and the battery is under the other.
- Detach the four cables connected to the cover by pinching the connector clips and pulling the cables out:
  - Three cables on the motherboard side.
    - Two red cables with white connectors and one white cable with a white connector.
  - One yellow cable with a black connector on the battery side.
-  After detachment, you should be able to completely remove the backside cover.

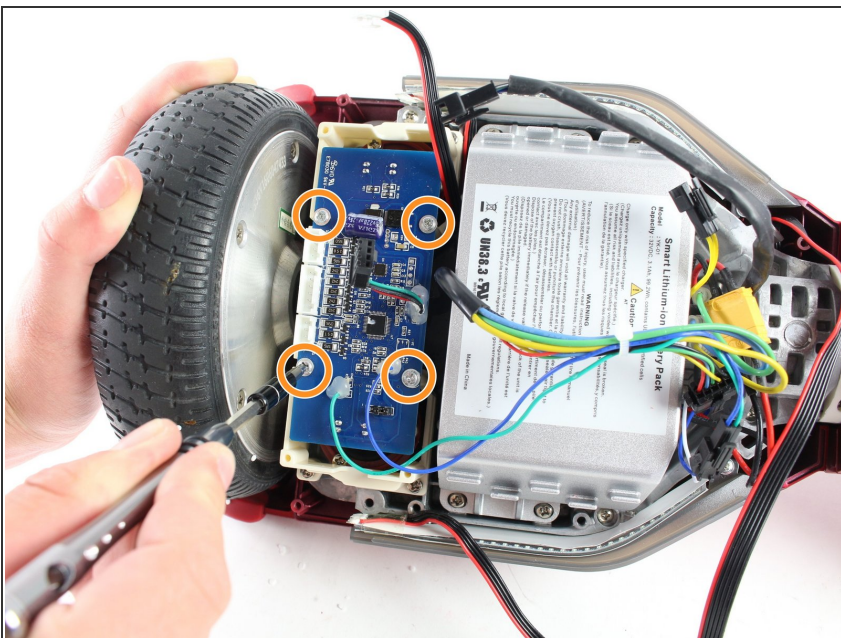


## Step 3 — Gyroscope



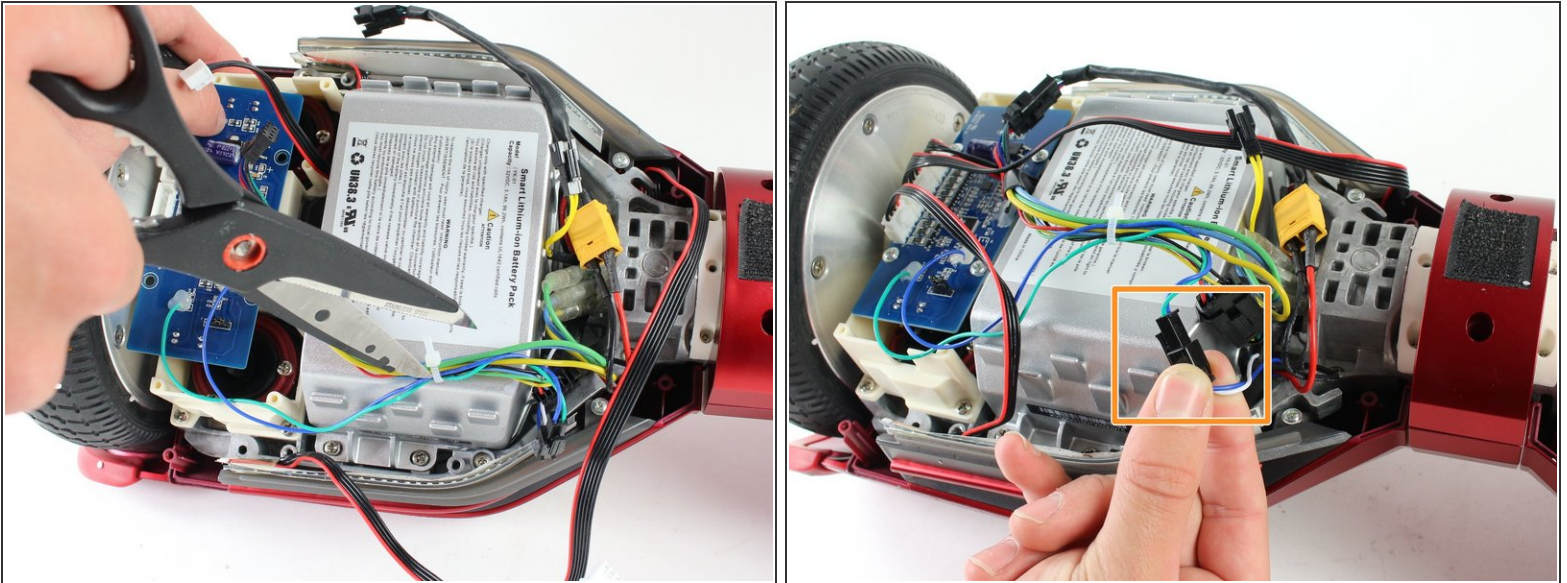
- ❗ The gyroscope is a blue rectangular circuit board on top of a white base and is closest to the wheel.
- Detach the four cables connecting the gyroscope to the hoverboard by pinching the connector clips and pulling the cables out:
  - Three red and black cables with white connectors.
  - One multicolored cable with a black connector.

## Step 4



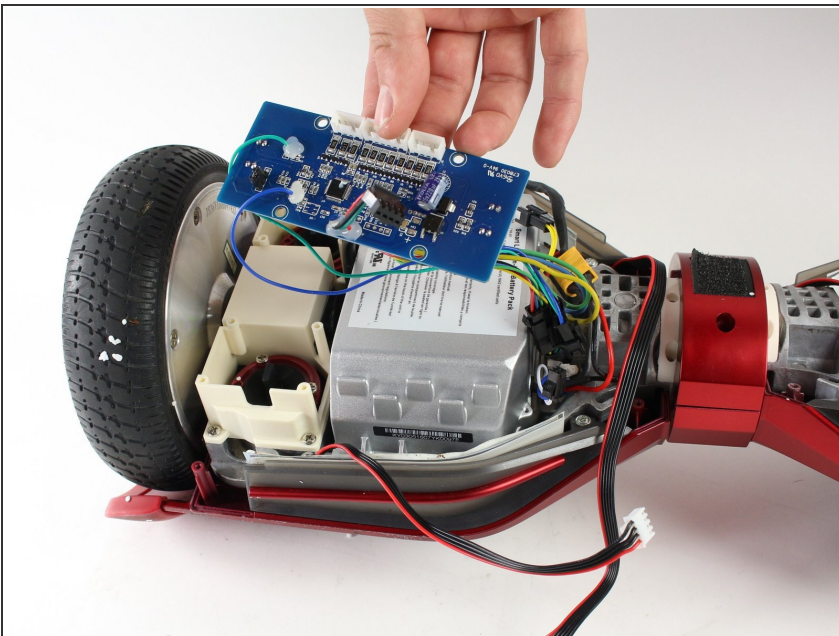
- Unscrew the four 7.2 mm Phillips #1 self-drilling screws connecting the blue gyroscope to the white plastic holding piece.

## Step 5



- Cut the plastic cable tie holding the cables together with utility scissors.
- Disconnect the blue/green cable from the blue/white cable by pinching the connector clips and pulling the cables apart.

## Step 6



- Gently lift the blue gyroscope off of the white plastic holder piece.
- ☑ After reassembling the Swagtron with the new gyroscope, check to make sure your Swagtron is balancing properly.
- ☑ If it is still unbalanced, repeat all steps in this guide with the gyroscope by the other wheel.

To reassemble your device, follow these instructions in reverse order.