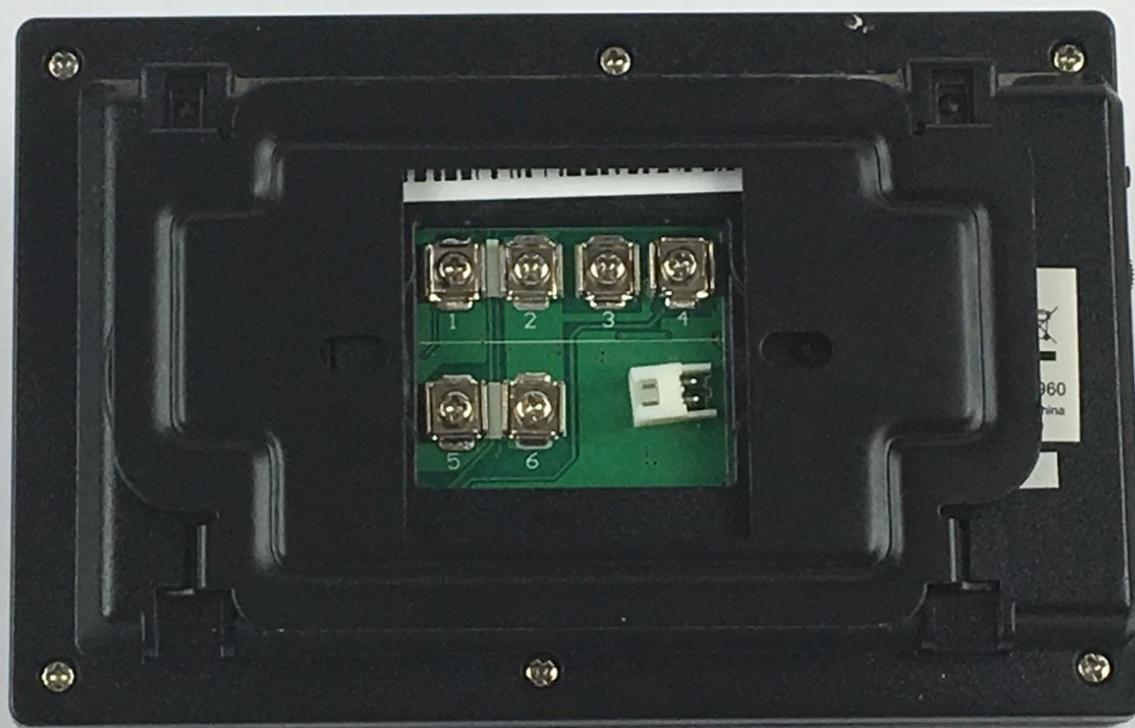




# Swann Doorphone Video Intercom Wall Mount Replacement

Replace your wall mount to mount the Swann Doorphone Video Intercom to your wall.

Written By: Emily Stenke



---

## INTRODUCTION

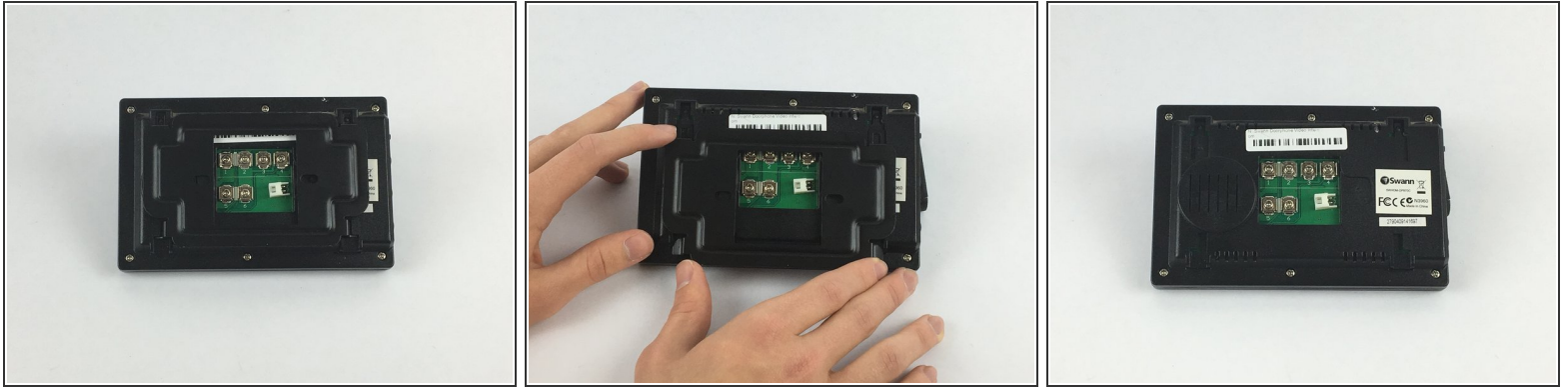
This guide will help you replace the wall mount of the Swann Doorphone Video Intercom. The wall mount is what is connected to your inside and outside walls.



### TOOLS:

- [JIS #0 Screwdriver](#) (1)
-

## Step 1 — Wall Mount



- Flip the monitor of the Swann Doorphone over so that the underside is facing up.
- Grip the sides of the rectangular frame where they extend outwards and slide it down.
- After sliding down, pull the frame towards you to remove it from the monitor.

## Step 2



- Flip the outdoor camera over so that the underside is facing up.
- Remove the back cover by grabbing the sides of the camera and pulling towards your body.

To reassemble your device, follow these instructions in reverse order.