

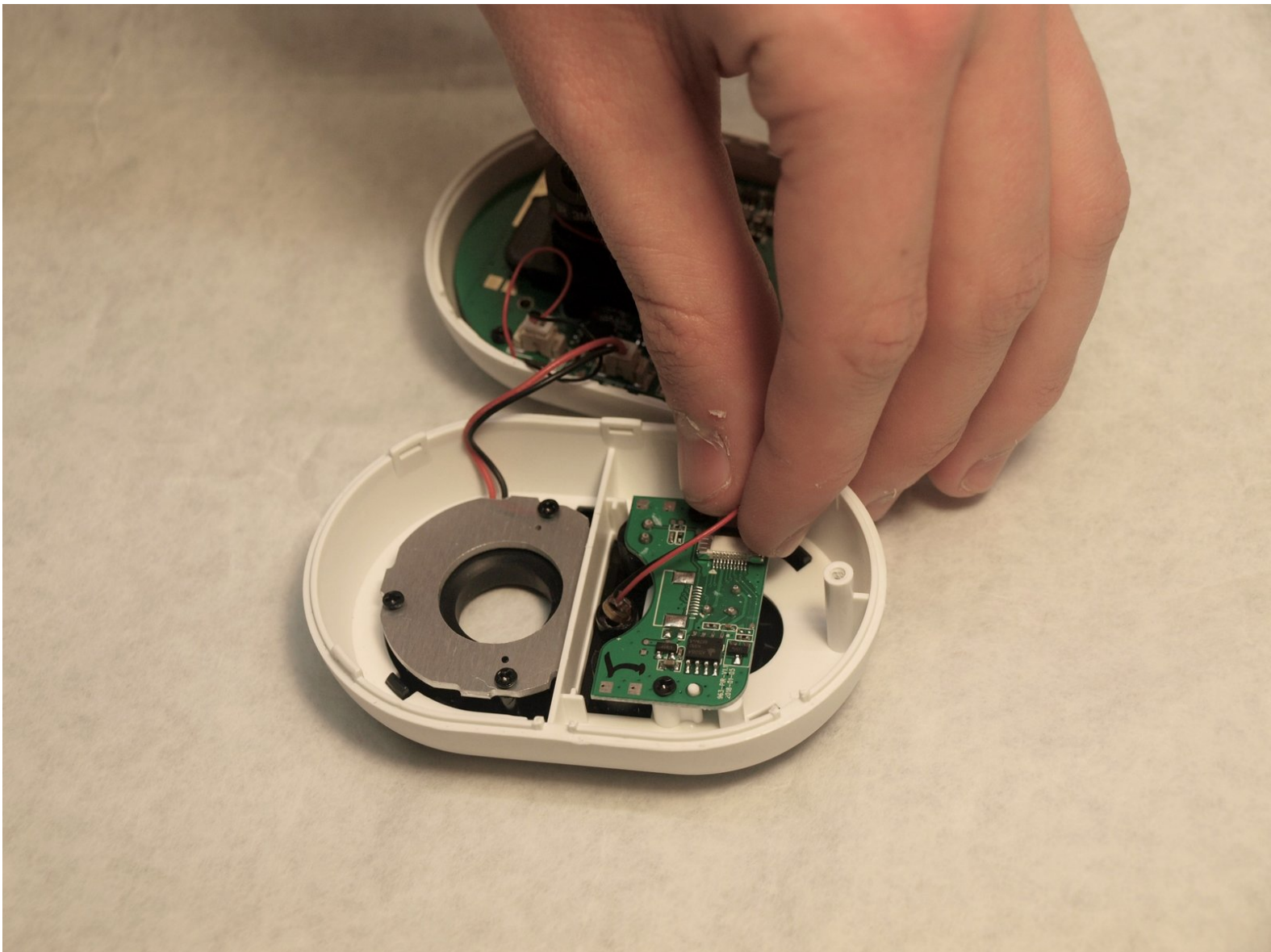


# Swann Wi-Fi Indoor Security Camera

## Microphone Replacement

This guide will explain the process of removing and replacing the internal microphone of the Swann Wi-Fi Indoor Security Camera.

Written By: Logan Sluder



---

## INTRODUCTION

This repair guide is to replace the microphone for the Swann Wi-Fi Indoor Security Camera. Common symptoms of a faulty microphone can be found in the troubleshooting page for the device [here](#). It is recommended to use a Phillips #0 screwdriver to remove the screws.

This repair guide requires the handling of electrical components that may be sensitive to ESD (Electrostatic Discharge), so proper ESD protection is also advised.



### TOOLS:

- [Phillips #0 Screwdriver](#) (1)
  - [iFixit Opening Tools](#) (1)
  - [Anti-Static Wrist Strap](#) (1)
-

## Step 1 — Case



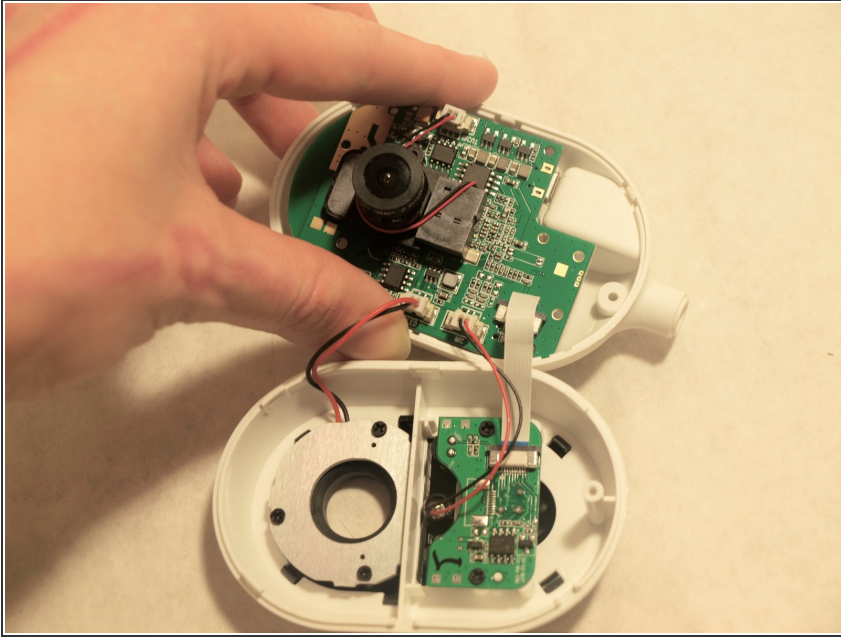
- Use the Phillips #0 to remove the screw located on the back of the camera above the mount.
- Slide the mount out from the bottom of the device.

## Step 2



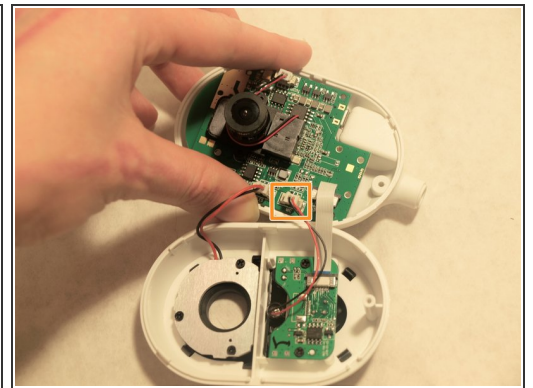
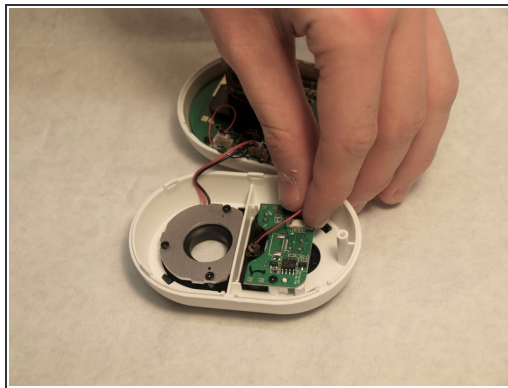
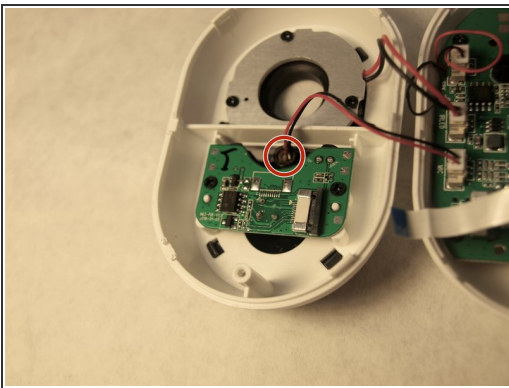
- Remove the back of the case by placing a iFixit opening tool underneath the edge of the case and prying it up.

### Step 3



- Carefully remove the back of the case without pulling the cables connected to the motherboard and the speaker on the back of the case.

### Step 4 — Microphone



- Locate microphone and pull to dislodge from the holder.
- Disconnect the connector located on the main board to finish disconnecting the microphone.

To reassemble your device, follow these instructions in reverse order.