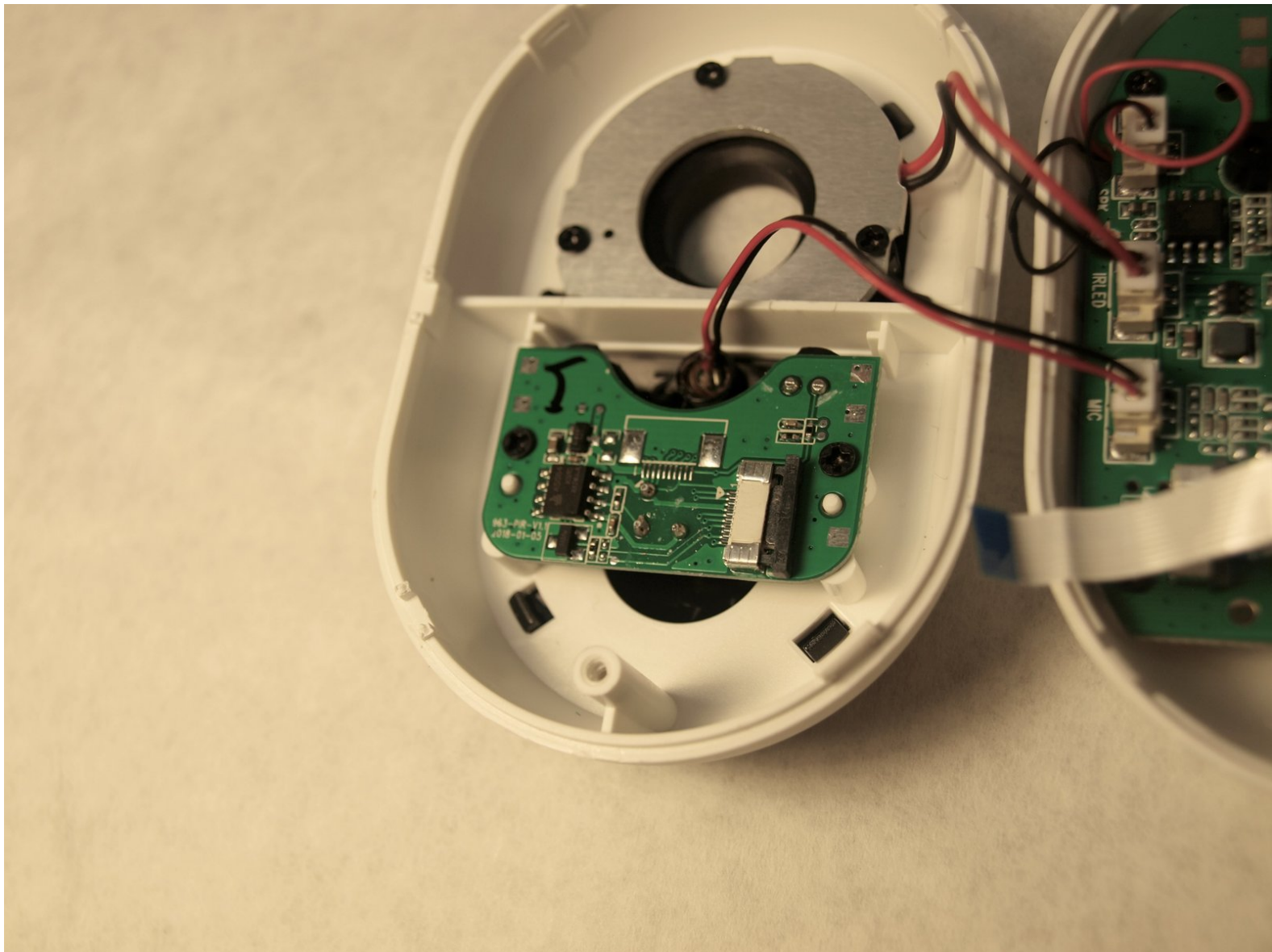




# Swann Wi-Fi Indoor Security Camera Motion Sensor Replacement

Follow this guide if you want to replace the motion sensor of your Swann Wi-Fi Indoor Security Camera.

Written By: Logan Sluder



---

## INTRODUCTION

This repair guide will provide steps to replace the motion sensor on a Swann Wi-Fi Indoor Security Camera. The motion sensor is what triggers the camera to begin recording. If your device matches the symptoms reported in [the troubleshooting guide](#) this repair guide will help remedy the issue further.

This guide requires the use of a [soldering](#) iron, proper safety and usage are advised to avoid injury. In addition, this repair guide requires the handling of electrical components that may be sensitive to ESD (Electrostatic Discharge), so proper ESD protection is also advised.



### TOOLS:

- [iFixit Opening Tools](#) (1)
  - [Phillips #0 Screwdriver](#) (1)
  - [Soldering Iron](#) (1)
  - [Soldering Workstation](#) (1)
  - [Anti-Static Wrist Strap](#) (1)
-

## Step 1 — Case



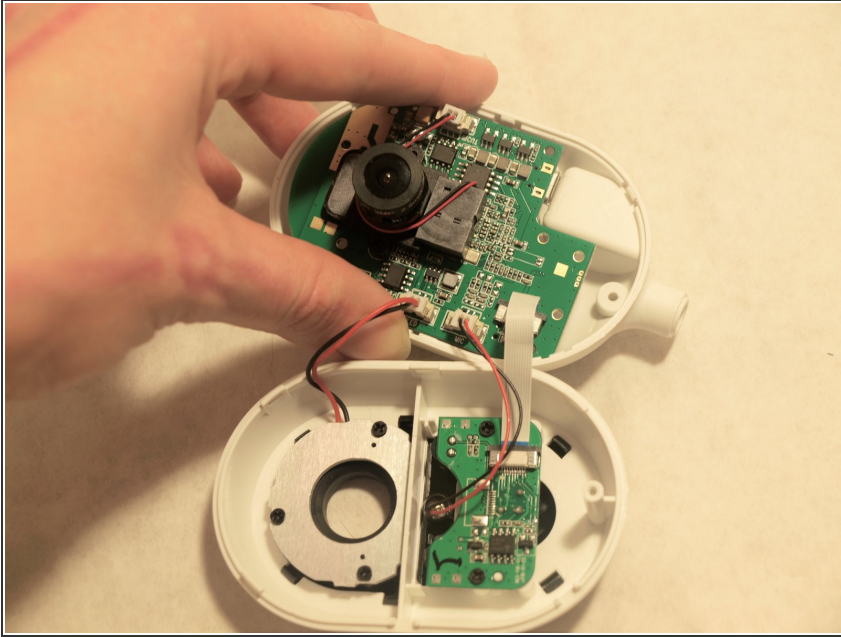
- Use the Phillips #0 to remove the screw located on the back of the camera above the mount.
- Slide the mount out from the bottom of the device.

## Step 2



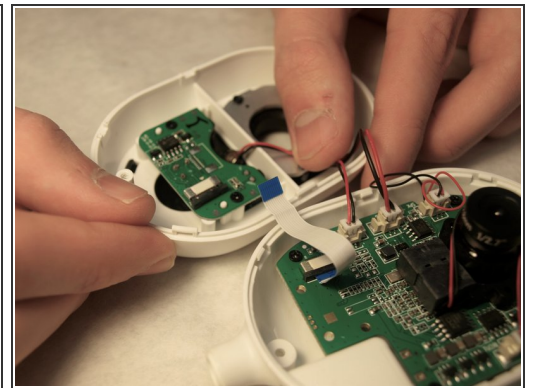
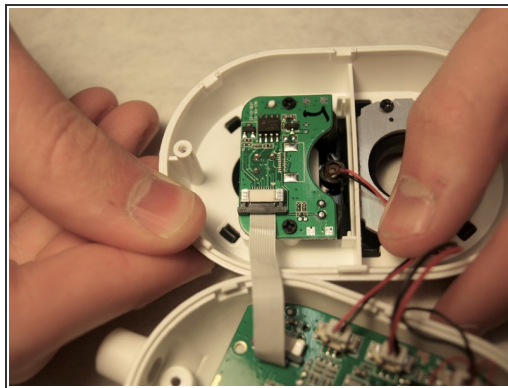
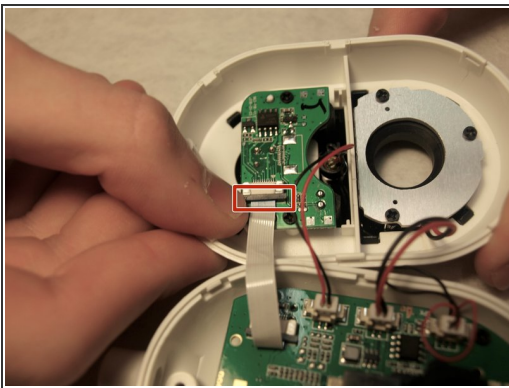
- Remove the back of the case by placing a iFixit opening tool underneath the edge of the case and prying it up.

### Step 3



- Carefully remove the back of the case without pulling the cables connected to the motherboard and the speaker on the back of the case.

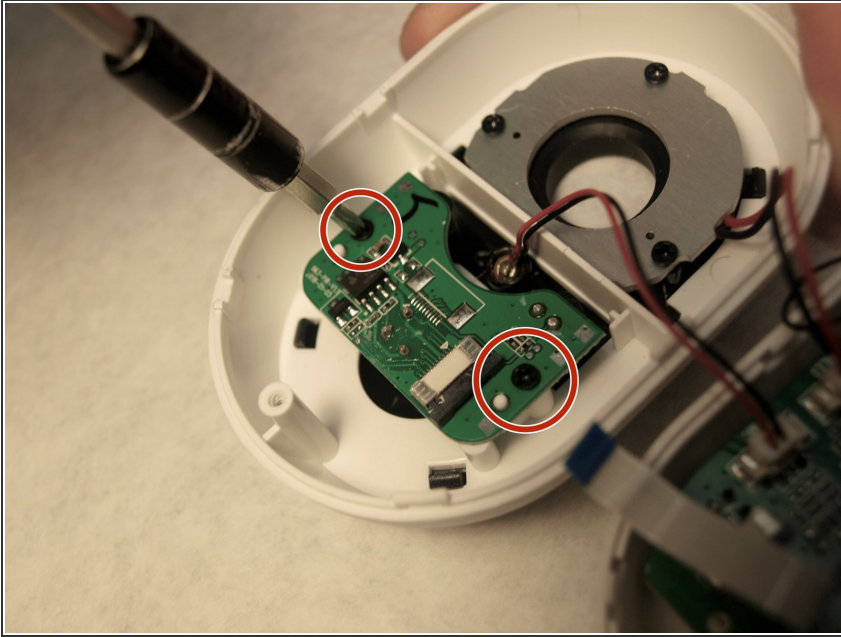
### Step 4 — Motion Sensor



- Facing the inside of the front of the case, release the white ribbon cable by pulling the black rectangular connector at the end of the connection
- Once the black holder is opened, gently pull the cable out of the holder.

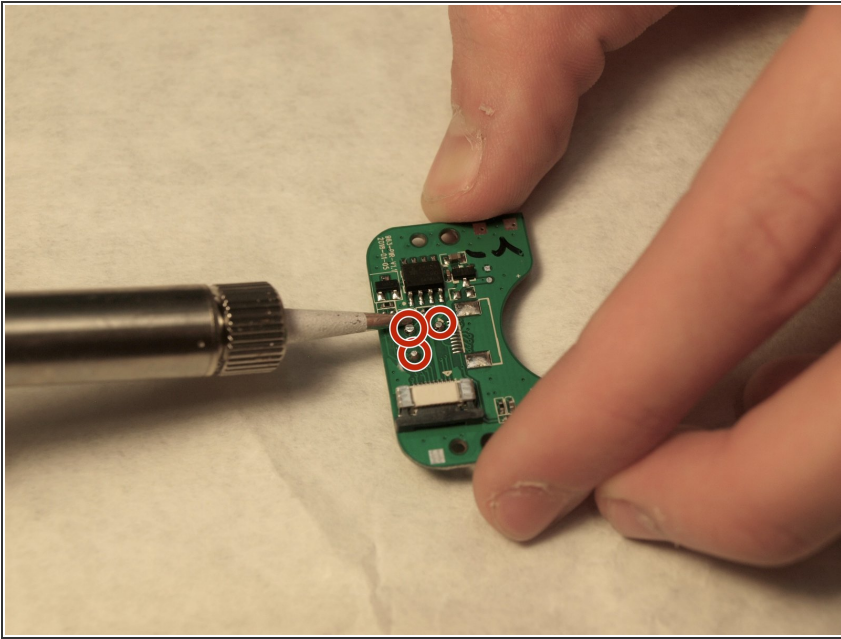


## Step 5



- Facing the back of the small board, remove the two 2.0 mm Phillips #0 black screws that connect it to the back of the case.

## Step 6



⚠ Carefully use a soldering iron to melt the solder in three places that connect the motion sensor. For more information on soldering follow this helpful [guide](#).

- Pull the sensor out from the motherboard.

To reassemble your device, follow these instructions in reverse order.