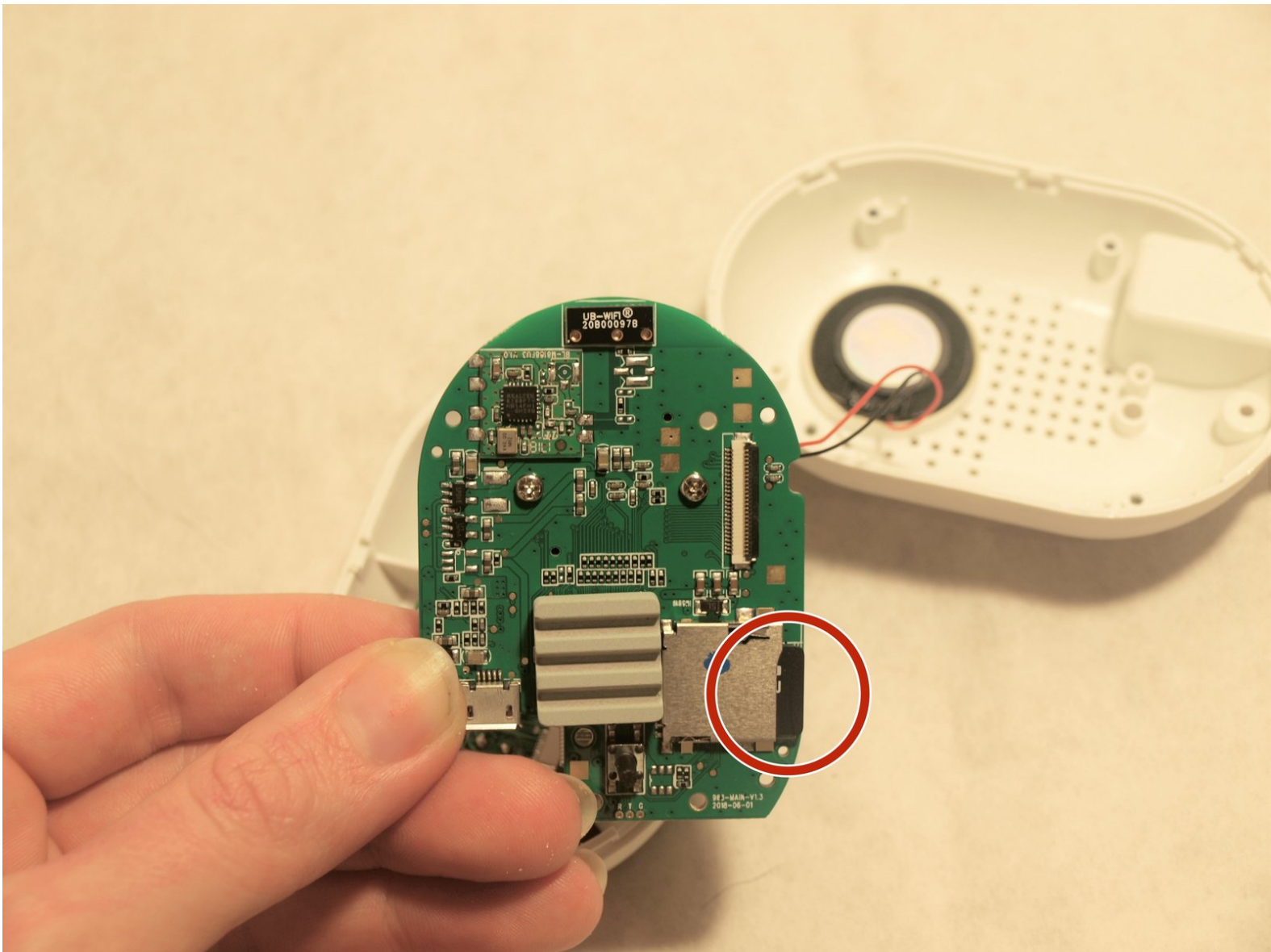




Swann Wi-Fi Indoor Security Camera SD Card Replacement

This guide will explain the process of removing and replacing the SD card in the Swann Wi-Fi Indoor Security Camera.

Written By: Logan Sluder



INTRODUCTION

This repair guide shows how to access the micro SD card on the Swann Wi-Fi Indoor Security Camera in order to replace it. In addition to the server storage of all security camera recordings, the camera has an SD card to store video for longer periods. Common problems with the SD card reader are failure to save video and corrupted videos. More in-depth symptoms can be read about in the troubleshooting page [here](#).

This repair guide requires the handling of electrical components that may be sensitive to ESD (Electrostatic Discharge), so proper ESD protection is also advised.



TOOLS:

- [Phillips #0 Screwdriver](#) (1)
 - [iFixit Opening Tools](#) (1)
 - [Anti-Static Wrist Strap](#) (1)
-

Step 1 — Case



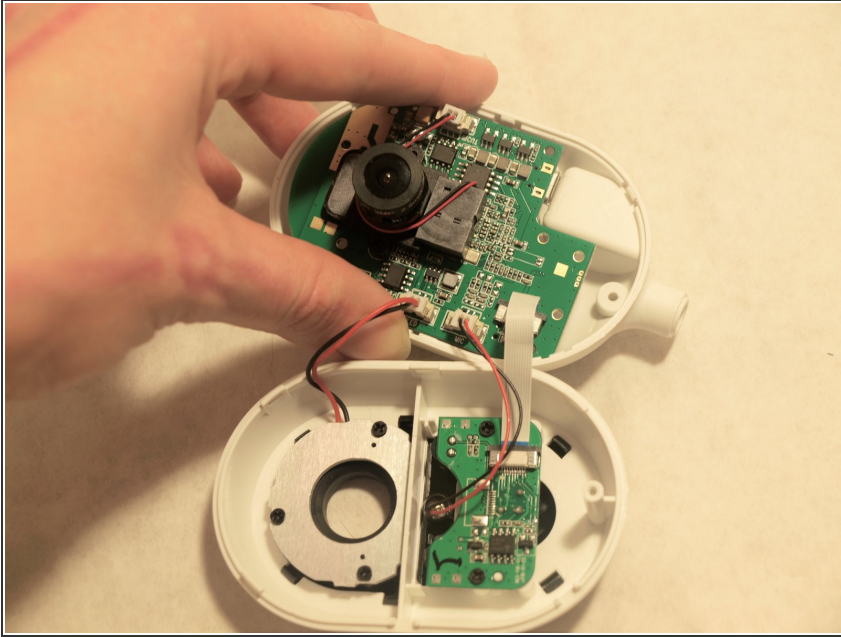
- Use the Phillips #0 to remove the screw located on the back of the camera above the mount.
- Slide the mount out from the bottom of the device.

Step 2



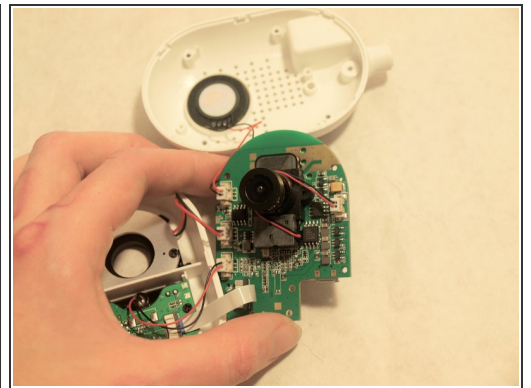
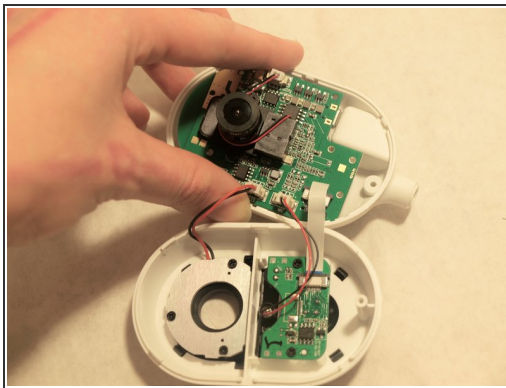
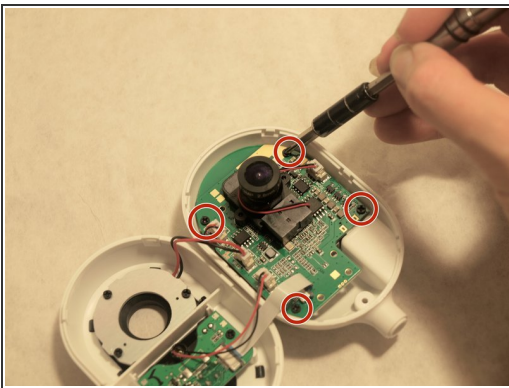
- Remove the back of the case by placing a iFixit opening tool underneath the edge of the case and prying it up.

Step 3



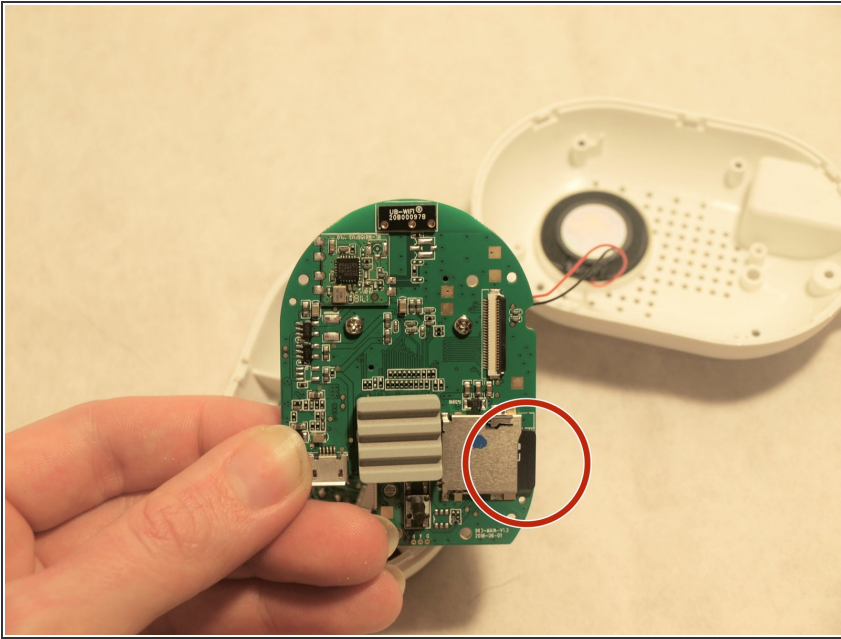
- Carefully remove the back of the case without pulling the cables connected to the motherboard and the speaker on the back of the case.

Step 4 — SD Card



- Facing the front of the camera, remove the four 2.0 mm Phillips #0 black screws that hold the back of the motherboard to the case.

Step 5



- With the motherboard removed, flip it over and remove the SD card by pushing in the SD card, releasing it.

To reassemble your device, follow these instructions in reverse order.