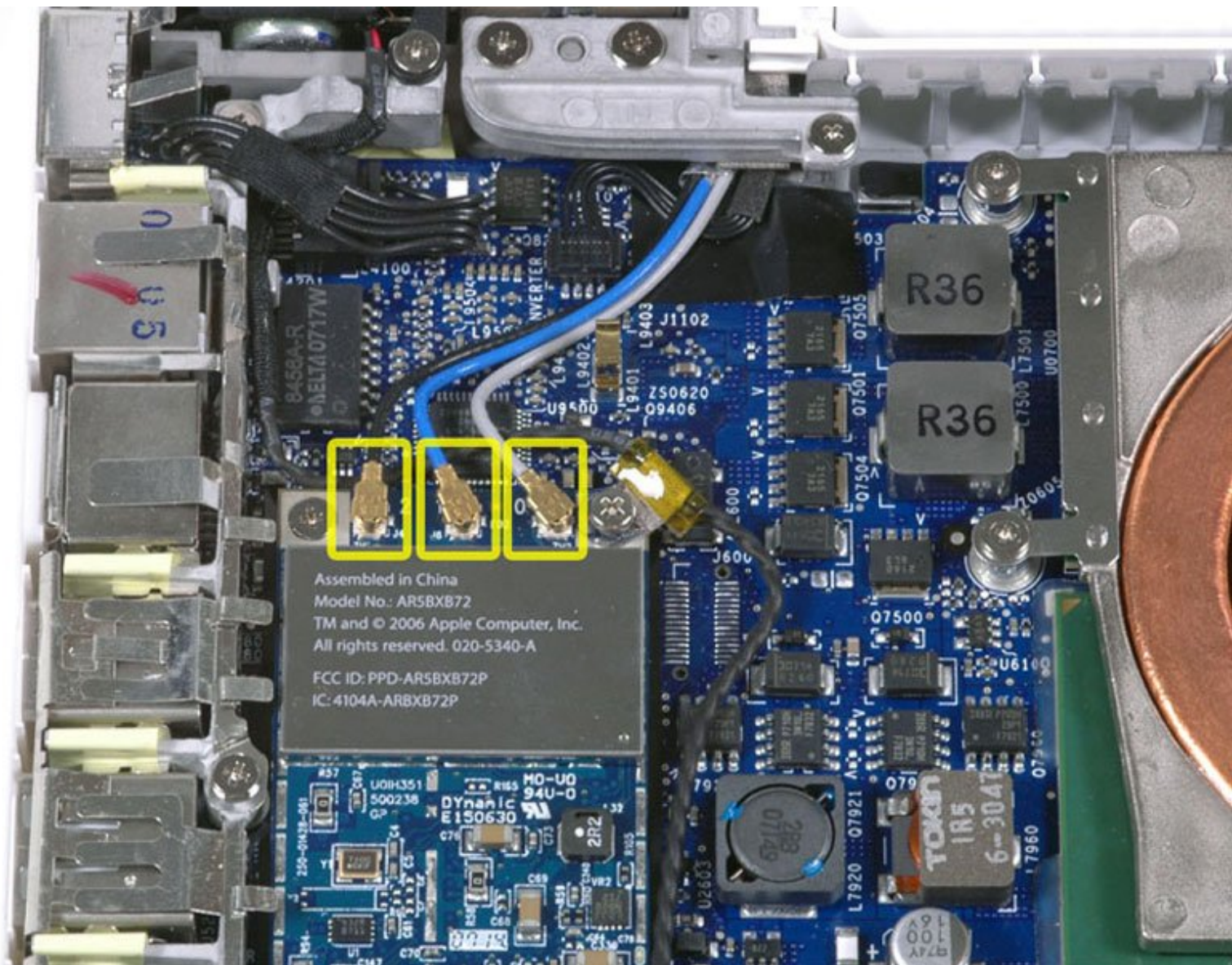




Switching the MacBook Core 2 Duo AirMac Extreme Card

Written By: Uhucream



INTRODUCTION

Built-in AirMac Extreme 802.11g card instructions

Overseas this is sold under the name of AirPort, but in Japan it is known as AirMac. The reason for this difference in names is the difference in trademark registration overseas versus Japan.



TOOLS:

- [Coin](#) (1)
- [Phillips #0 Screwdriver](#) (1)
- [Phillips #00 Screwdriver](#) (1)
- [Phillips #000 Screwdriver](#) (1)



PARTS:

- [MacBook Core 2 Duo Santa Rosa/Penryn 802.11n Airport Extreme Card](#) (1)
- [MacBook Core 2 Duo 802.11n Airport Extreme Card](#) (1)
- [MacBook \(Early Mid 2009\) 802.11n Airport Extreme Card](#) (1)

Step 1 — Battery



- Rotate the battery latch 90° in clockwise with a coin.

Step 2



- Lift the hatch, and remove it from the laptop

Step 3 — RAM cover



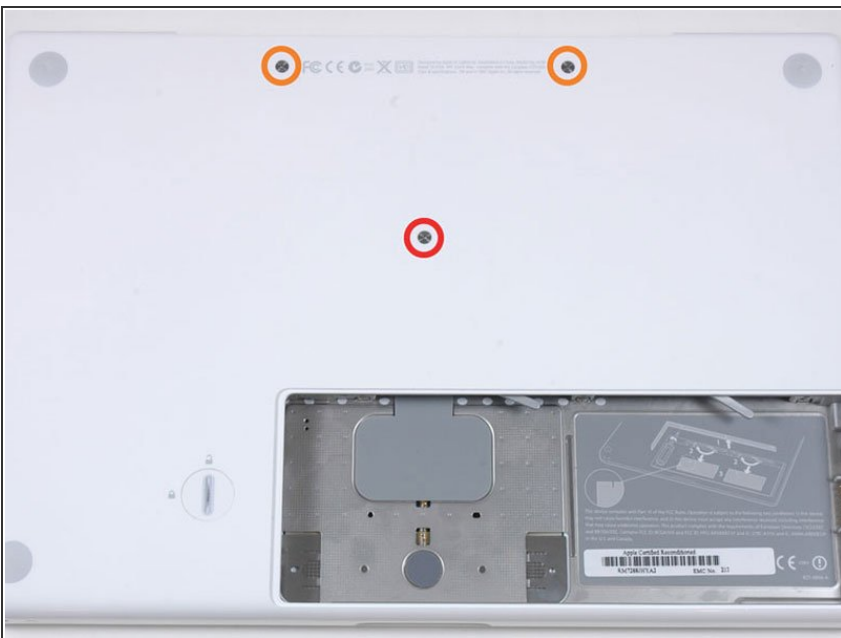
- Please remove the three Phillips screws equally spaced on the partition of the battery on the back side of the main unit.
- ✪ Since the screw is fixed to the metal memory cover, there is no worry of losing it.
- ⚠ (Translator's Comment) Although I am unable to turn Phillips (Phillips) screws in accordance with the JIS standards sold in Japan, since it does not mean that the shapes are perfectly matched, There is a possibility that it may not be possible to reassemble in the worst case because it is scraped.
- Drivers for Phillips screws are sold with the notation PHxxx or PH # xxx if going to a home center etc. (x is a number, it is like 000, 00, 0, 1, 2 ... from the smallest tip order). Or you can also purchase it at the iFixit store because it is sold.

Step 4



- Pull the L-shaped RAM cover towards you and remove it from the laptop.

Step 5 — Top board



- Please remove the following three screws:
 - One Phillips # 000 screw (screw head: diameter 5 mm, thickness 0.75 mm) of 11 mm in length in the middle of the case is one
 - Two Phillips # 000 screws (screw head: diameter 5 mm, thickness 0.75 mm) with a length of 14.5 mm are two
- ⓘ If the screw will get stuck to the case, you can remove the screw by sticking with a magnetic driver.
- ★ The shortest screw among the three comes in the middle.

Step 6



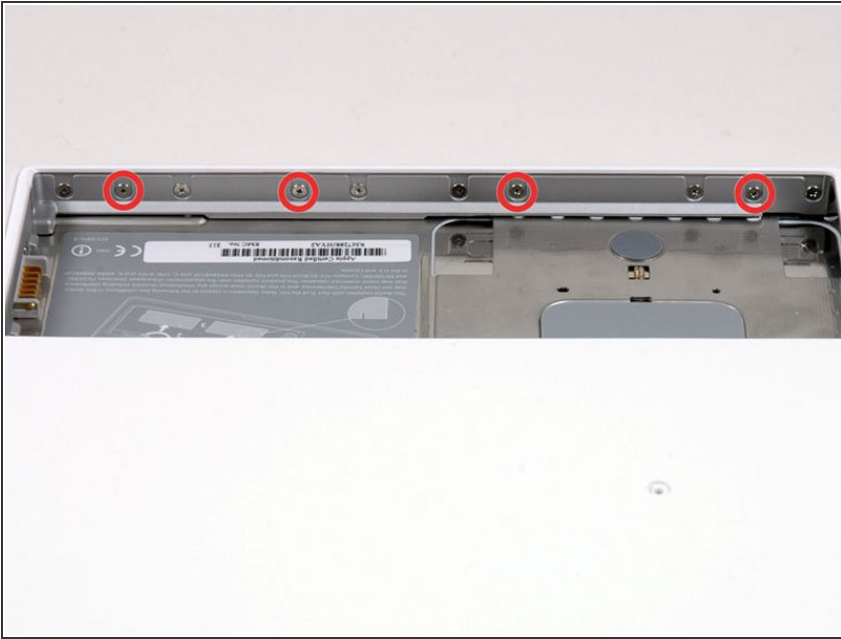
- Take out the battery and the 3 screws inside the battery compartment.
 - One 3mm long phillips head #0 screw (Screw diameter: 2.75mm)
 - On either side there are two 4mm long Phillips head #0 screws. (Screw head diameter is 2.27mm)

Step 7



- Please remove the following two screws at both ends of the partition on the right side of the battery. (The screw closer to the battery connector is only fixing the battery connector, so it is not necessary to remove it.)
 - Two Phillips # 000 screws (screw head: diameter 4 mm, thickness 0.5 mm) with a length of 6.25 mm are two

Step 8



- Please remove the four screws indicated by the red circle of the image on the partition of the battery on the front side of the main unit. It is the 2nd, 4th, 7th, 9th screw from the left.
- Four Phillips # 000 screws (screw head: 4 mm diameter, 0.4 mm thickness) with a length of 3.25 mm

Step 9



- Please remove the following four screws on the back side of the computer:
- The long screws are inside and the short screws are outside both ends.
- There are two Phillips # 00 screws (shank dimension: 2.2 mm in diameter, 2 mm in length) (screw head: 3.2 mm in diameter, 0.5 mm in thickness) with a long 11 mm shank
- There are two Phillips # 00 screws (shank dimension: 2 mm in diameter, 3.75 mm in length) (screw head: 3.2 mm in diameter, 0.5 mm in thickness) with a shank of 7.25 mm in length

Step 10



- Please remove the two screws on the optical drive side of the computer.
 - Phillips # 00 screw with shank of 5.2 mm in length (Shank dimensions: diameter 2.3 mm, length 3.5 mm) (screw head: diameter 3.2 mm, thickness 5 mm)
- ⓘ The same screw on the opposite side of the optical drive is the decorative so you do not have to remove it.

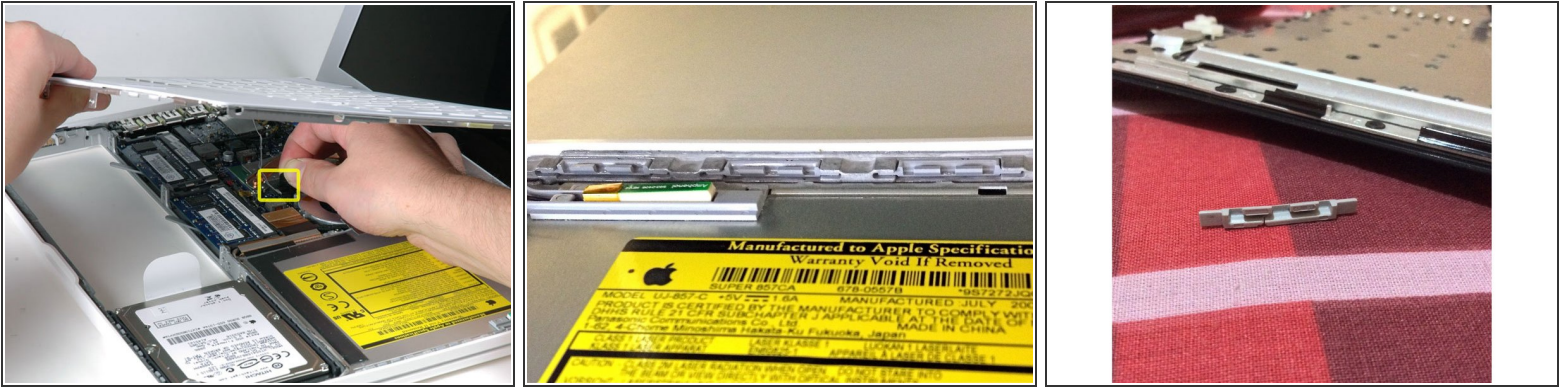
Step 11



⚠ Since the keyboard and the track pad of the top board are connected with the logic board with the ribbon cable, please never forcibly pull out. The ribbon cable may be torn down.

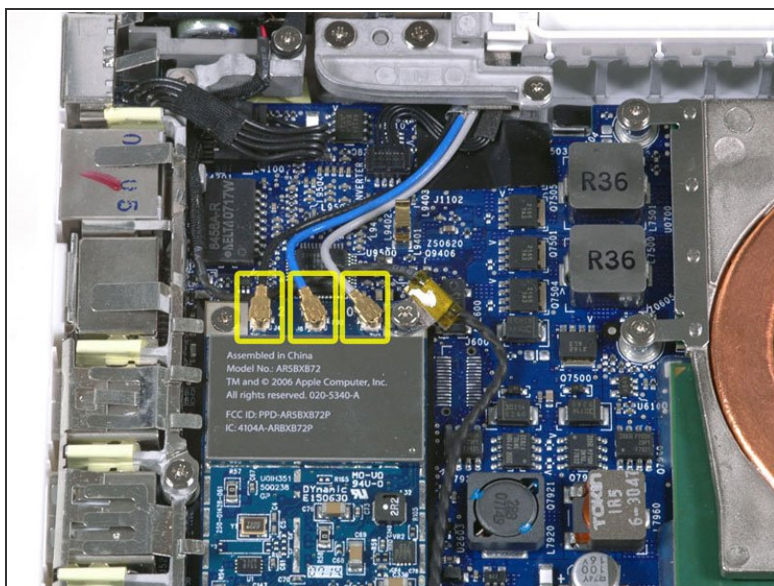
- Let's detach the top board on the principle of lever (lever) so that it goes around from the screen side to the front side of the computer. If you use the [plastic opening tool](#) or a stiff guitar pick, you can easily remove it.
- i** As the top of the optical drive top seems to stick together, please put a guitar pick etc. on both sides of the optical drive that is not sticking first and remove the top board with a lever.
- i** After removing the work, the four gray plastic clips holding the keyboard may be disengaged, but please do not rush. There is a part where you put the clip in the corner of CD drive periphery right side corner and there is no problem if you slide the clip into it and set it there.

Step 12



- While lifting the top board, please pull the black tab on the connector part of the silver cable upwards and remove the connector.
- ⓘ If there is no black tab it is possible to remove the connector from the connector housing by using the spatger with the lever principle. Because this connector is long, please be sure to remove it straight up.
- ⓘ Even if you disconnected the cable attached to the top board when removing the top board, please be assured that iFixit sells the [cables](#) individually. There is an [exchange guide](#), it can do easily.
- How about trying as an opportunity to remove dust, hair, etc while removing the top board? The best is to use a can containing compressed air. If you do it with a solid brush made of building materials (using common animal hair), static electricity will be generated and you can destroy your computer.
- ⓘ In reassembling, please confirm that the four gray plastic clips are on the optical drive side of the keyboard. (Please refer to the second image.) Please firmly attach the clip so that the keyboard is securely fixed.
- ⓘ To ease the reassembly process, it is better to clip the clip part. Please note that doing with a strong force may cause damage.
- ⓘ (Translator's comment) Since it will not be fixed unless you attach it with a strong force when fixing the keyboard, the insertion opening of the optical drive may be distorted with a strong force.
- ⓘ There is no worry about being distorted if you put half of the disc such as a DVD and the credit card etc which you no longer need into the insertion opening in half.

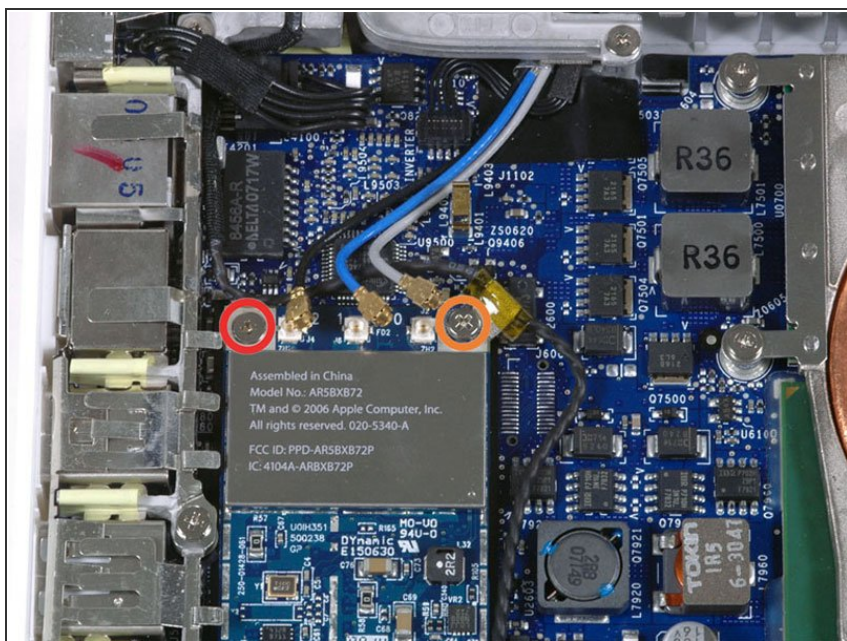
Step 13 — AirMac Extreme Card



**Alternate Layout:
Santa Rosa/Penryn**

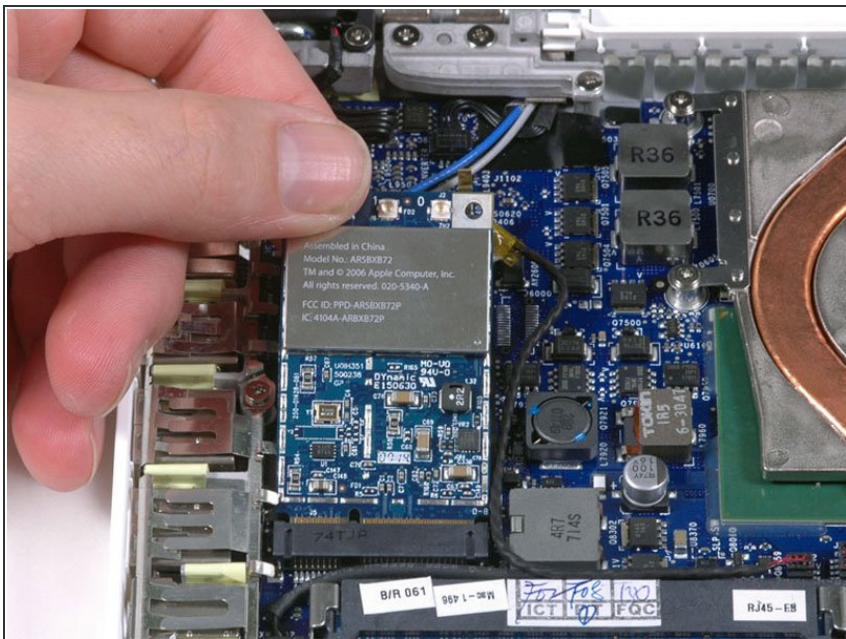
- Gently remove the 3 signal wires shown in the yellow box
- ✦ First, disconnect the black wire, then the blue wire, then the grey wire.
- ❗ If your MacBook is a Core 2 Duo Santa Rosa or Penryn core loaded model, there are only two antenna cables. Remove the black wire, then the grey wire.

Step 14



- Remove the following two screws from the AirPort Card:
 - One 3mm long Phillips screw
 - One 8mm long Phillips screw

Step 15



- Holding the top of the AirPort Card firmly, remove it by slide it out in the direction towards the screen of the computer.