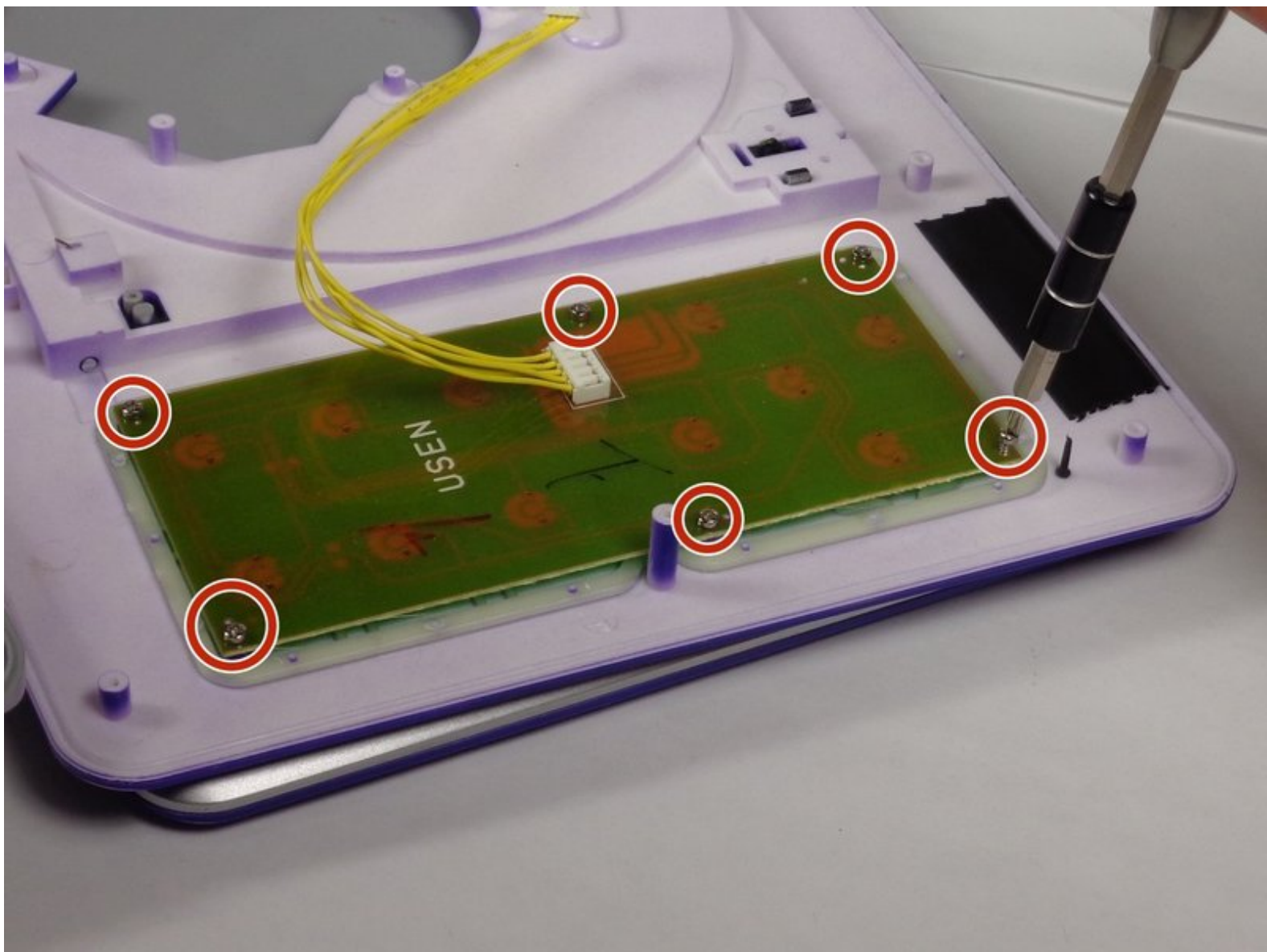




Sylvania SDVD9004 Control Pannel Replacement

Written By: Sarah Henry





TOOLS:

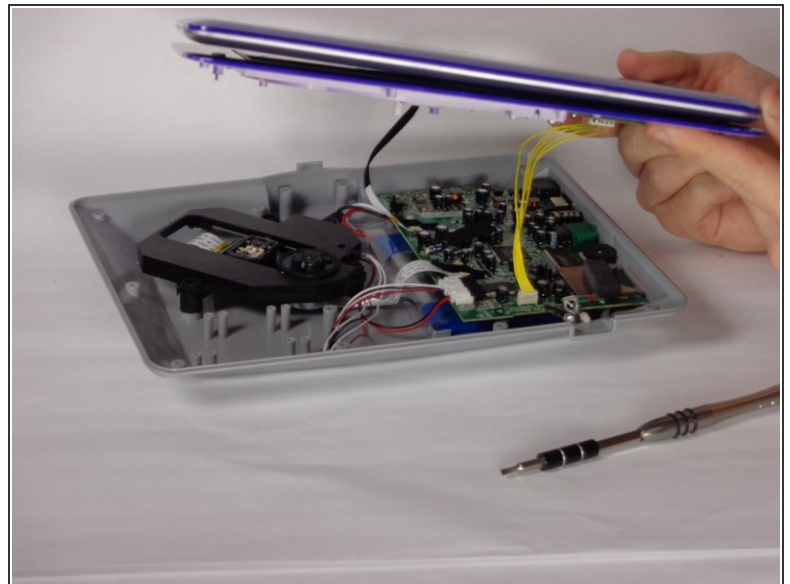
- [Heavy-Duty Spudger](#) (1)
 - [Phillips #0 Screwdriver](#) (1)
-

Step 1 — Back cover



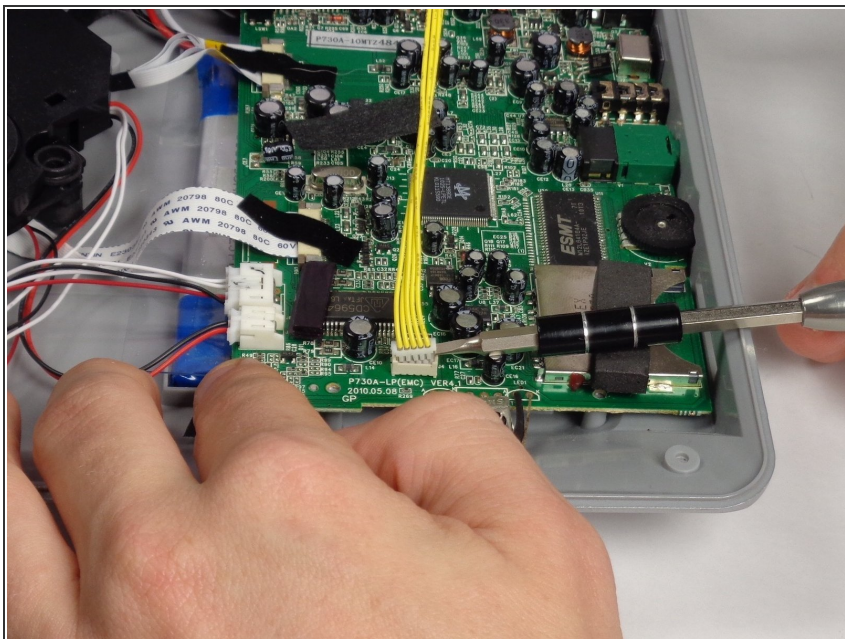
- Remove ten 7mm Phillips #0 screws.
- Remove four 5mm Phillips #0 screws.


Step 2



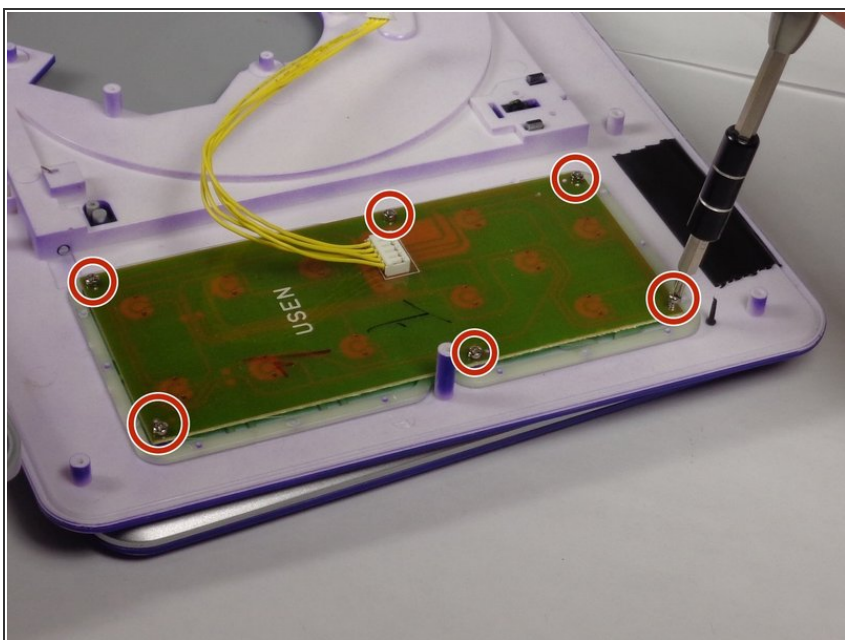
- Flip the device over.
- Lift the top.

Step 3



 This guide uses incorrect tools. Use an ESD safe tool, such as a nylon spudger, to complete this step.

Step 4 — Control Pannel



- Use a Philips Head screwdriver to remove six 5mm screws.

To reassemble your device, follow these instructions in reverse order.