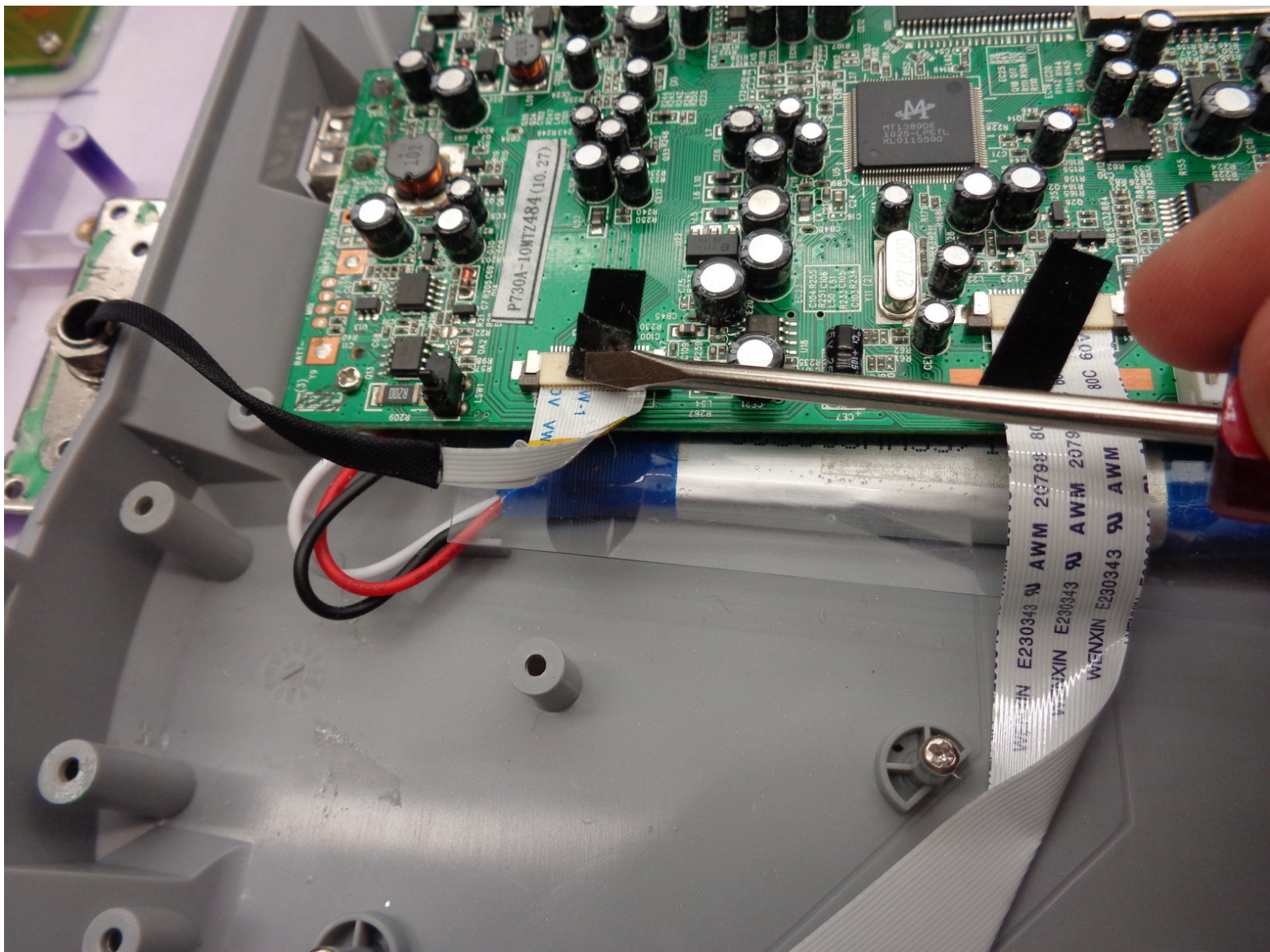




Sylvania SDVD9004 Screen Replacement

A step by step guide on how to replace a malfunctioning screen.

Written By: Sarah Henry



INTRODUCTION

This guide uses incorrect tools. Use an ESD safe tool, such as a nylon spudger, to complete steps that involve delicate internal components.

TOOLS:

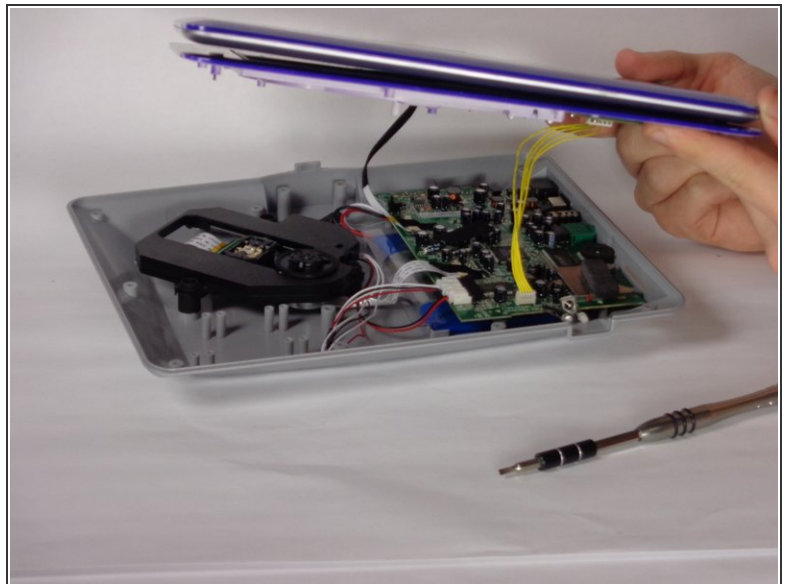
- [Phillips #0 Screwdriver](#) (1)
 - [Heavy-Duty Spudger](#) (1)
 - [Phillips #00 Screwdriver](#) (1)
-

Step 1 — Back cover



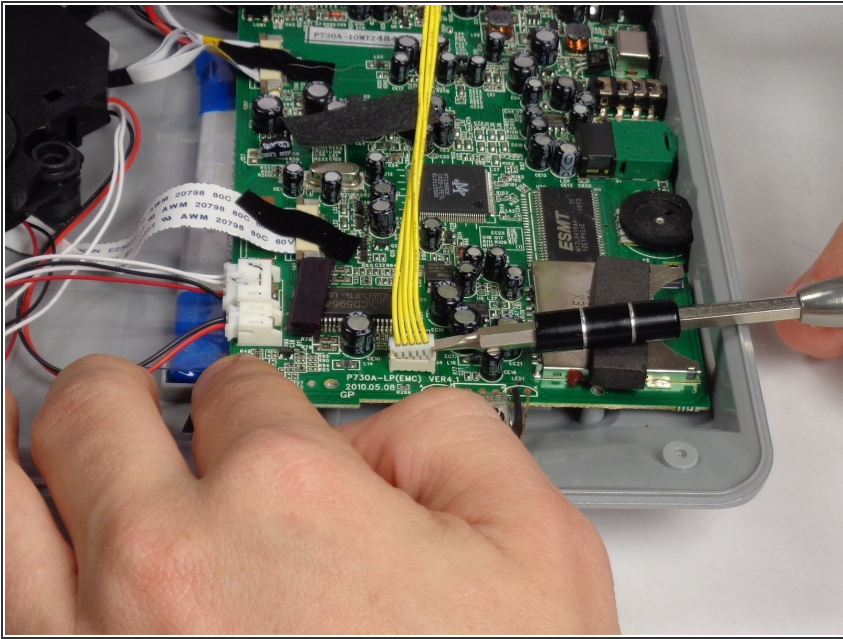
- Remove ten 7mm Phillips #0 screws.
- Remove four 5mm Phillips #0 screws.


Step 2



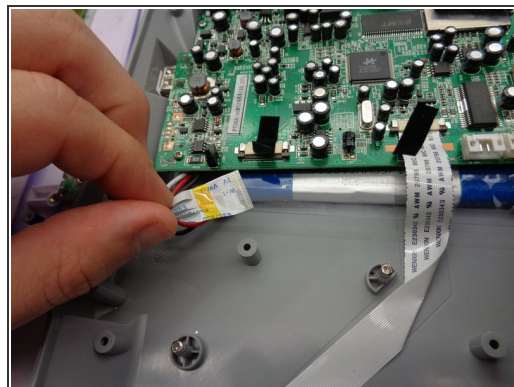
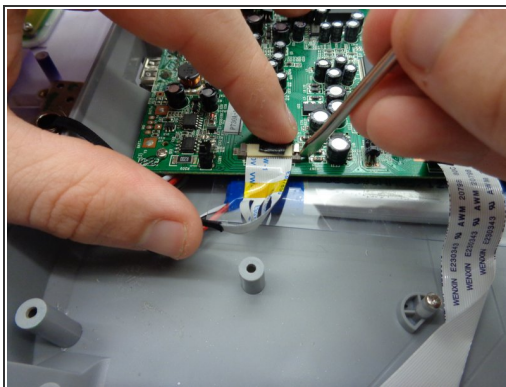
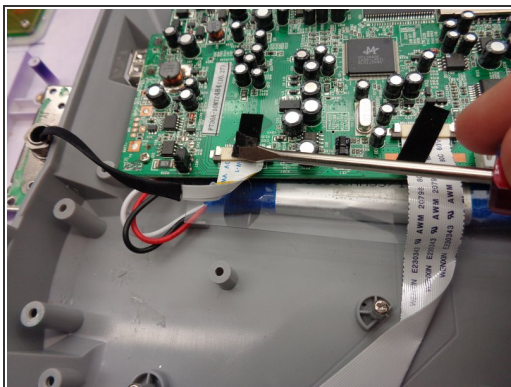
- Flip the device over.
- Lift the top.

Step 3




 This guide uses incorrect tools. Use an ESD safe tool, such as a nylon spudger, to complete this step.

Step 4 — Screen

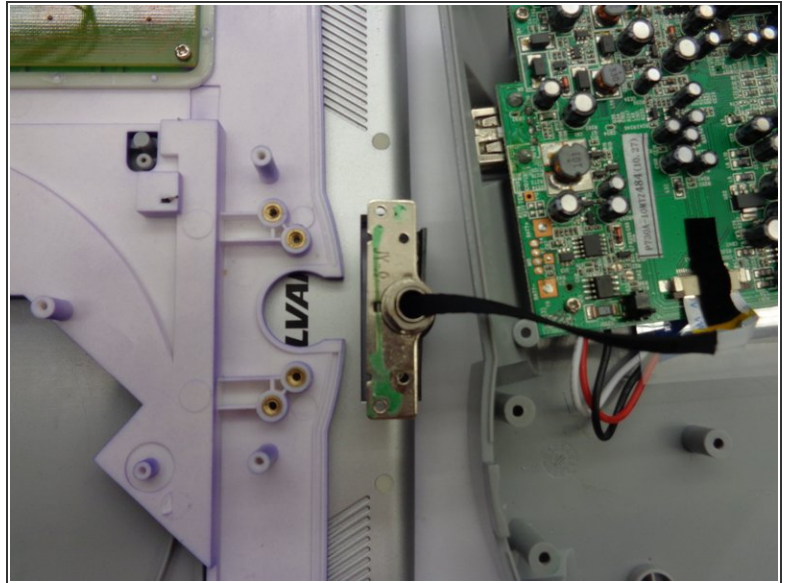
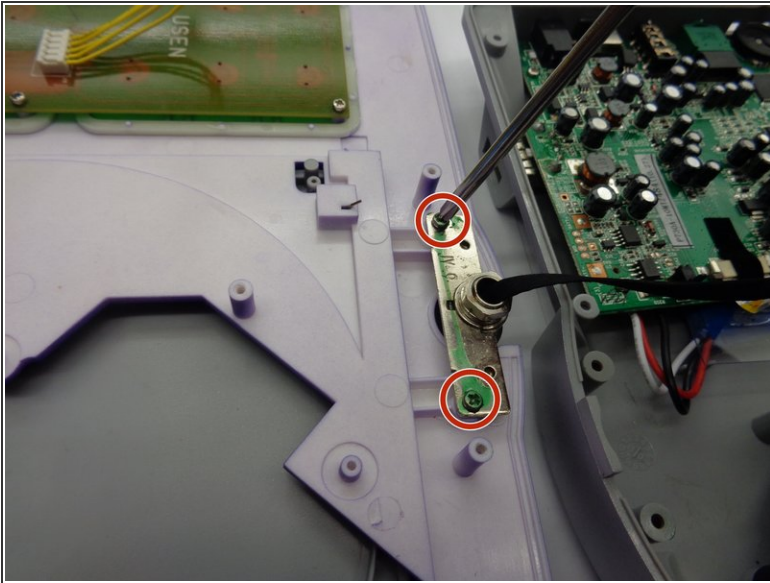


- Disconnect ribbon

 This guide uses incorrect tools. Use an ESD safe tool, such as a nylon spudger, to complete this step.

- Rotate screwdriver to peel sticker from ribbon.
- Place spudger head behind gray tabs on port.
- Press outward to disengage tab.
- Repeat on other side.
- Slide out ribbon.

Step 5



- Using Philips head screwdriver, remove the two 7 mm screws.
- Slide off top panel.

To reassemble your device, follow these instructions in reverse order.