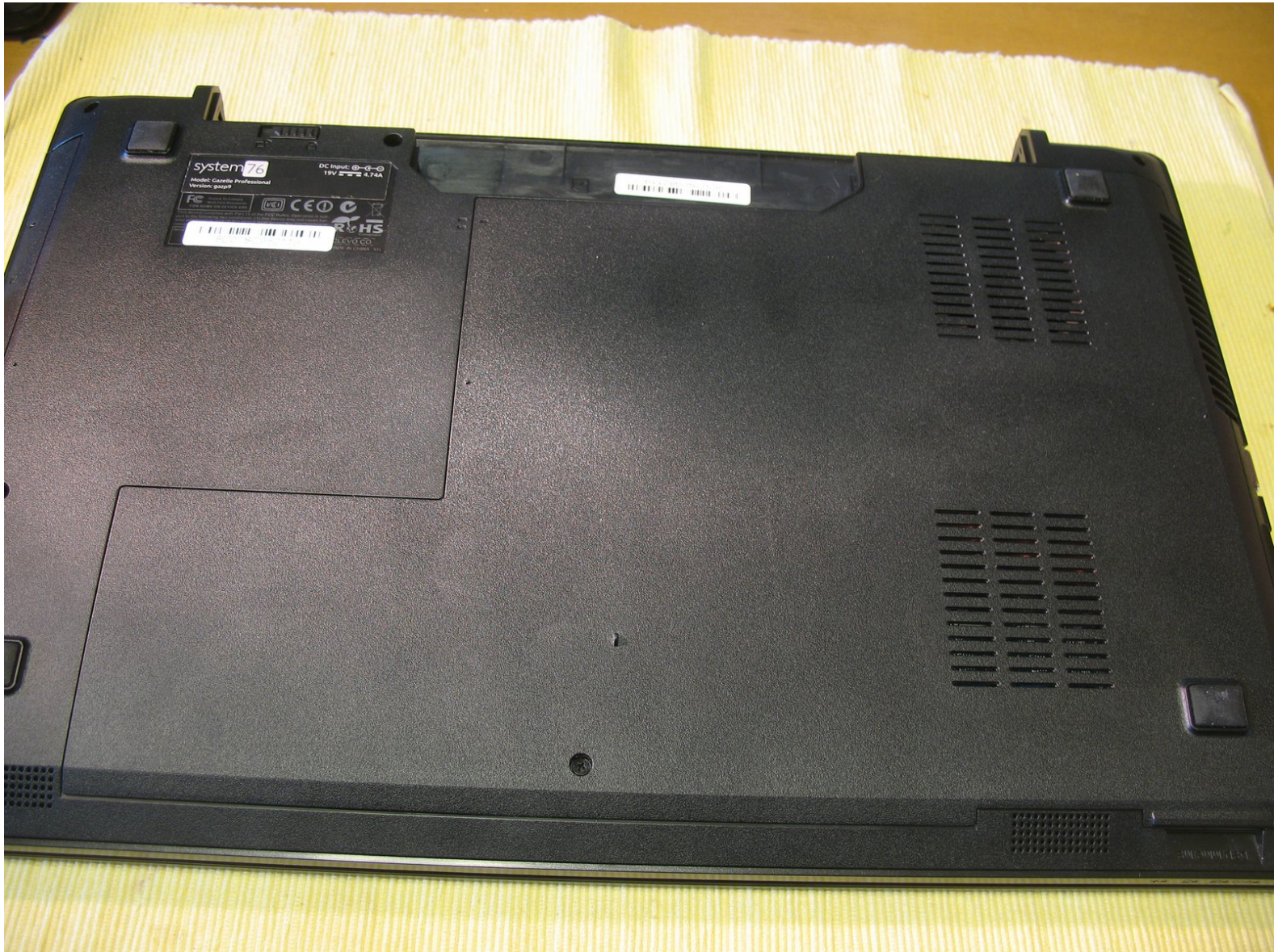




System76 Gazelle Professional 9 mSATA SSD Replacement

How to replace an mSATA drive in a System76 GazP9

Written By: James Dearing





TOOLS:

- [Phillips #0 Screwdriver](#) (1)
-

Step 1 — mSATA SSD



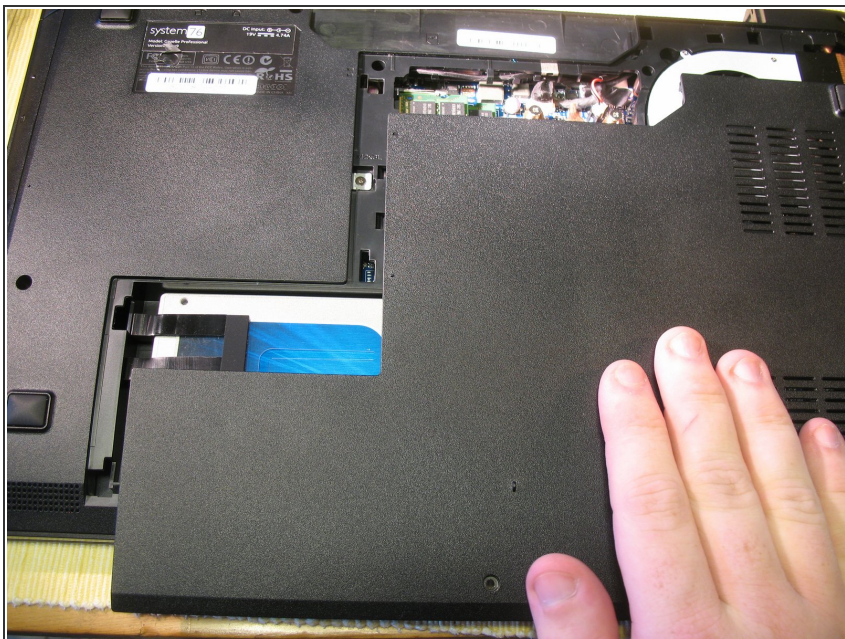
- Disconnect the battery and power cord from the computer.

Step 2



- Remove the two 5mm screws near the front of the computer

Step 3



- Slide the panel towards the front of the computer; it will come off easily.

Step 4



- If you have not already, be sure to ground yourself before touching any internal parts.
- Remove the single 3mm screw holding down the SSD.

The image consists of two side-by-side photographs of a laptop's internal components, specifically the battery and motherboard.

Left Photo (Battery): Shows the battery with a white label containing the following information:

- SN: CUL308307X22403
- Model: 3S30NCEC240B3
- PBA: G7750-200
- Capacity: 2400B
- RATED DC 3.3V 1
- WARRANTY VOID IF REMOVED
- FW: LLL
- Pch/rev: 2L1
- TA: G25304-011
- WFM: B4B6765D0B01
- BOM: B4B6765D0B05
- WWN: 50015178758DC423

A handwritten label "AS62573" is visible on the battery label.

Right Photo (Motherboard): Shows the motherboard with an Intel Centrino Advanced-N 6250 label and another handwritten label "AS62573". The label also contains the following information:

- SN: CUL308307X22403
- Model: 6235ANHMMW
- FCC ID: PDH6235ANH
- IC: 16008-6235ANH
- SPS: 670292-001 0B
- TA: G25304-011
- WFM: B4B6765D0B01
- BOM: B4B6765D0B05
- WWN: 50015178758DC423

A handwritten label "AS62573" is visible on the motherboard label.

- To reassemble your device, follow these instructions in reverse order.

Page 5 of 5