



T-Mobile Huawei Prism U8651T MicroSD Card Replacement

How to install or replace the SD card in your phone.

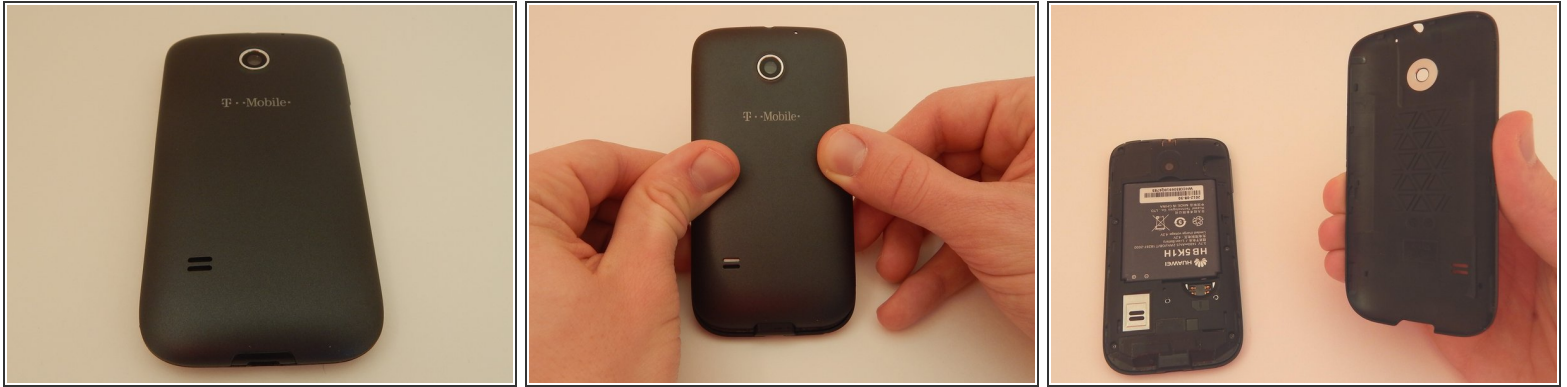
Written By: Dillon



INTRODUCTION

If you are running into memory issues with your T-Mobile Huawei Prism U8651T, installing or replacing an SD card may be necessary. This guide will show how to install/replace the SD card in your phone.

Step 1 — Remove Back Cover Panel



- Place the phone face down.
- Slide the back cover panel away from you, until you hear a click.
- Lift the back cover panel.

Step 2 — Inserting the SD Card.



- Locate the SD card port.
- Orient the SD card as shown.
- Insert the SD card into the SD card port.

To reassemble your device, follow these instructions in reverse order.