



T-Mobile Huawei Prism U8651T Teardown

This teardown will serve as a guide to show the complete disassembly of your phone.

Written By: Dillon



INTRODUCTION

In this guide, the complete disassembly of the T-Mobile Huawei Prism U8651T will be shown. This will show the removal of the battery, plastic mid frame, LCD, and the digitizer.



TOOLS:

- [iFixit Opening Tools](#) (1)
 - [T4 Torx Screwdriver](#) (1)
-

Step 1 — Remove Back Cover Panel



- Place the phone face down.
- Slide the back cover panel away from you, until you hear a click.
- Lift the back cover panel off.

Step 2 — Remove Battery



- Place the [plastic opening tool](#) in the gap between the camera and battery.
- Pry the battery up.
- Remove the battery.

Step 3 — Torx Screws



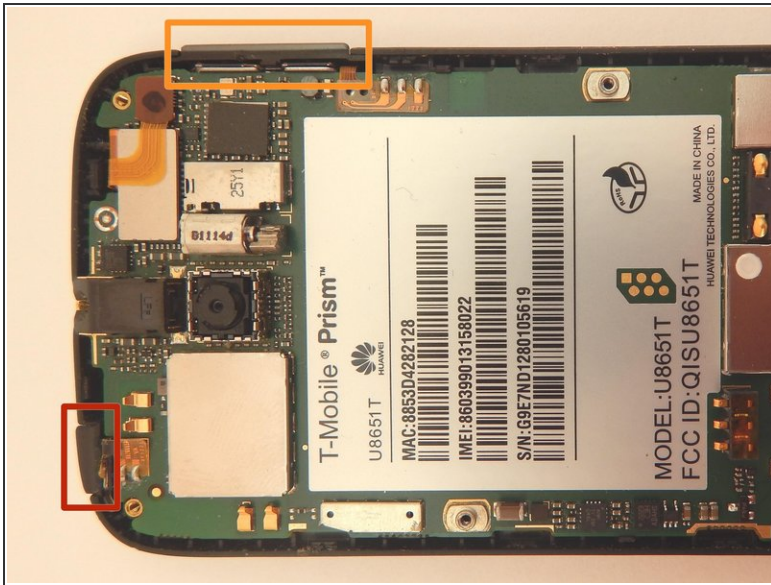
- Locate the six 3mm torx screws holding the plastic mid frame in place.
- Remove the six torx screws with the [T4 torx screwdriver](#).

Step 4 — Remove Plastic Mid Frame



- Place the [plastic opening tool](#) in the charging port.
- Pry up to loosen the bottom edge of the plastic mid frame.
- Work the [plastic opening tool](#) along the seam, until the the plastic mid frame is detached.
- Remove the plastic mid frame.

Step 5 — Remove Power and Volume Buttons



- Locate the power button.
 - Locate the volume button.
 - Slide the two buttons up and out of the phone.
- ⚠ The removed buttons are incredibly easy to lose, so be sure to keep an eye on them.

Step 6 — Remove Power Button Sensor Strip



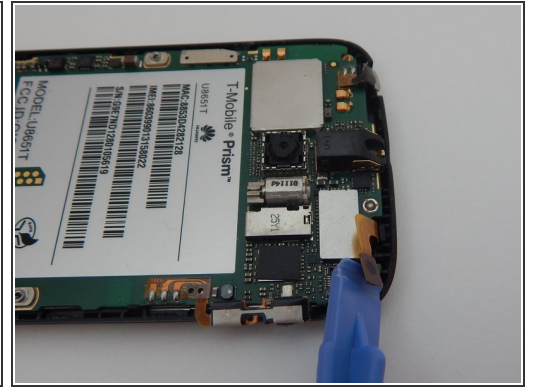
- Locate the power button sensor strip.
- Place the [plastic opening tool](#) under the sensor strip.
- Pry the sensor strip up.

Step 7 — Remove Volume Button Sensor Strip



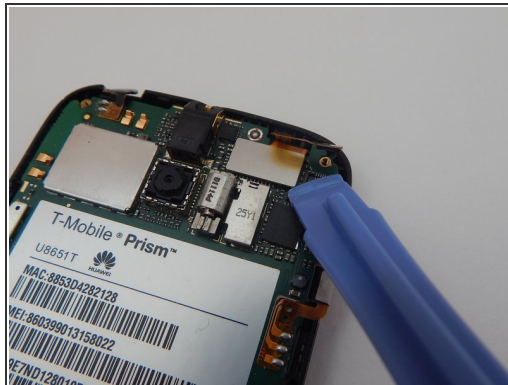
- Locate the volume button sensor strip.
- Place the [plastic opening tool](#) under the sensor strip.
- Pry the sensor strip up.

Step 8 — Remove Outer Screen Connector



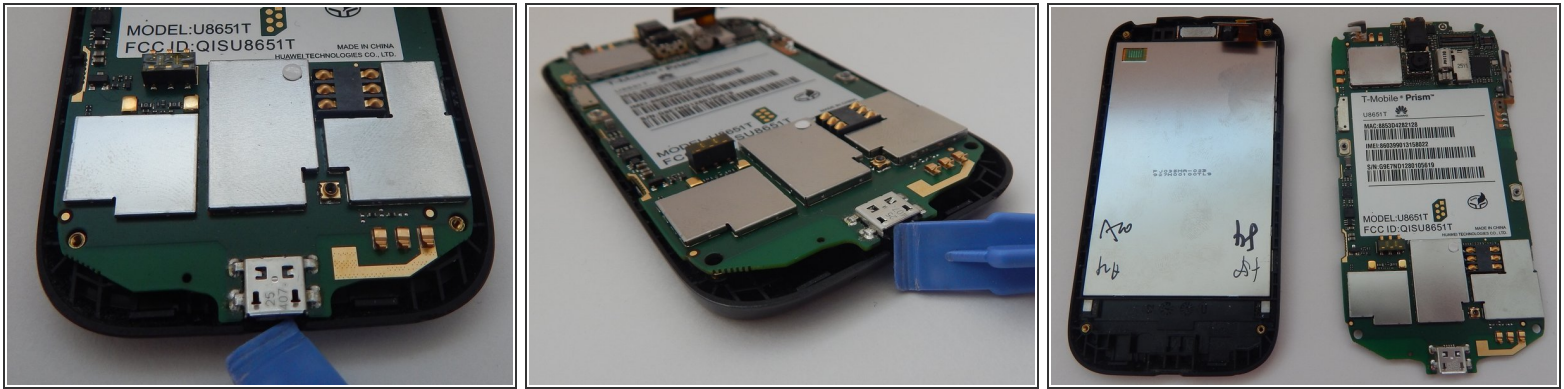
- Locate the outer screen connector.
- Place the [plastic opening tool](#) under the screen connector.
- Pry the screen connector up.

Step 9 — Remove Inner Screen Connector



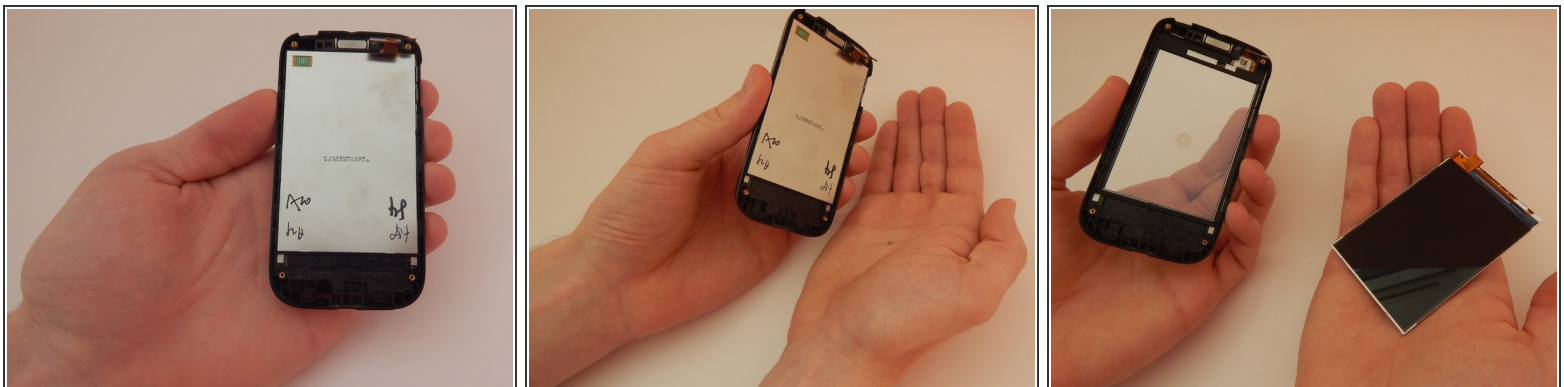
- Locate the inner screen connector.
- Place the [plastic opening tool](#) under the screen connector.
- Pry the screen connector up.

Step 10 — Remove Motherboard



- Place the [plastic opening tool](#) in the charger port.
- Pry the motherboard up.
- Remove the motherboard.

Step 11 — Remove Screen



- Pick up the front half of your phone with your left hand.
- Slowly rotate the phone so the screen falls into your right hand.

⚠ Be extremely careful not to drop the screen.

Step 12



- Teardown complete

To reassemble your device, follow these instructions in reverse order.