



# T-Mobile REVVL Plus Battery Replacement

This guide will show you how to replace the battery on the T-Mobile REVVL Plus.

Written By: Patrick

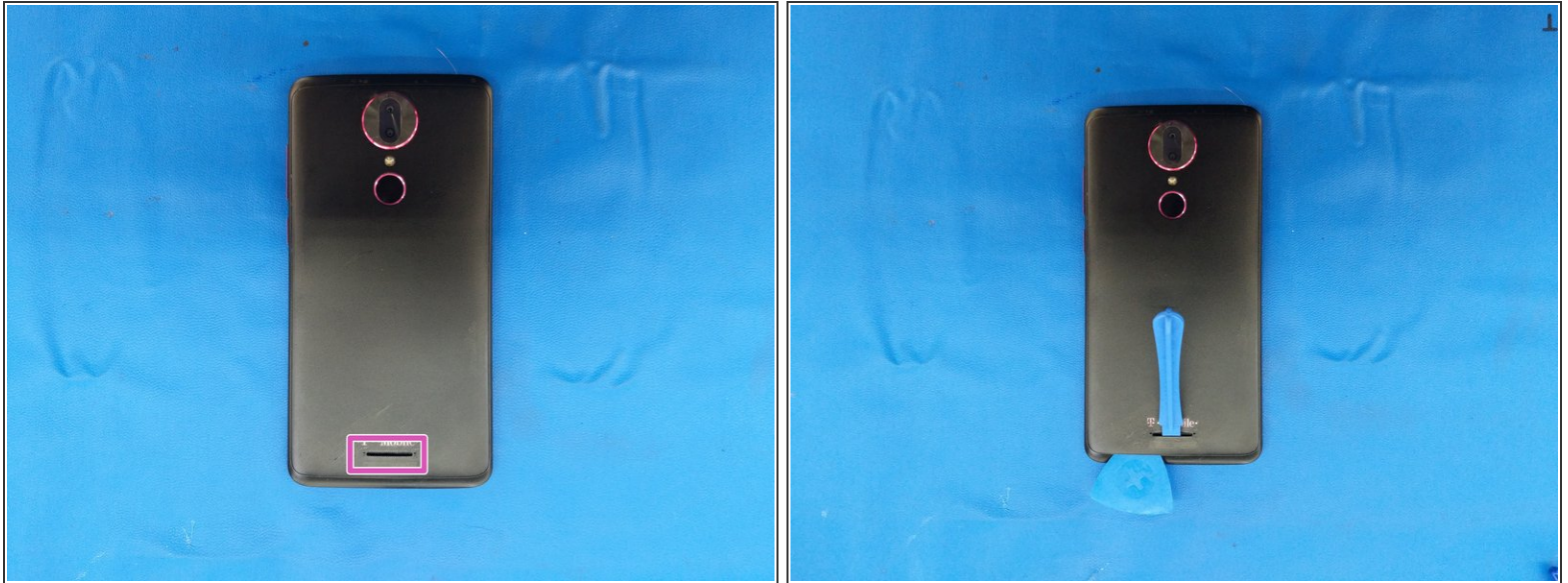




## TOOLS:

- [Phillips #00 Screwdriver](#) (1)
- [iFixit Opening Tools](#) (1)
- [iFixit Opening Picks set of 6](#) (1)
- [Halberd Spudger](#) (1)
- [Tesa 61395 Tape](#) (1)

## Step 1 — Removing the back



- The back of the phone is held on with a combination of plastic clips and adhesive.
- The entry point is the speaker grille near the bottom of the phone. Be careful not to insert the opening tool directly downward to avoid damaging the speaker.
- Insert a plastic opening tool in the hole in the back of the phone as shown to lift the back cover.
- Insert a guitar pick to keep the plastic cover lifted.

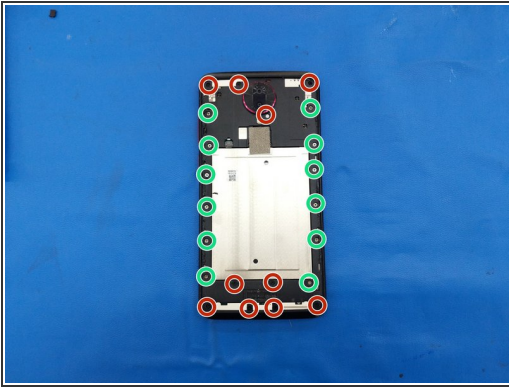


## Step 2



- Work a guitar pick or opening tool around the edges of the back panel to disengage all clips.
- There is adhesive around the edges of the back panel as well as around the camera.
- ⚠ The fingerprint sensor is attached to the back panel of the phone. Be careful not to rip the flex cable!
- Insert the hook of a Halberd spudger into the small opening above the plastic part covering the fingerprint sensor and pry it off while covering it so it doesn't go flying away.
- Disconnect the fingerprint sensor flex cable with the flat end of a Halberd spudger or an opening pick and set the back panel aside.

### Step 3 — Removing the midframe



- Remove 10 black Philips screws (including one covered by a white sticker below the camera lens).
- Remove 12 silver Philips screws.
- Gently peel up the bottom half of the metal tape to reveal...
- Two more black Philips screws to remove.

### Step 4



- The midframe is held on by strong plastic clips around the edges of the phone. Insert an opening tool or pick as shown near the SIM card slot
- Ensure that all screws have been removed, then work your way around the edges of the phone.
- Clips near the corners are particularly strong.

## Step 5 — Remove the battery



- Disconnect the battery flex cable.
- The battery is held in by 3 vertical strips of adhesive. Use rubbing alcohol and/or heat to soften the adhesive.
- ⓘ If you are replacing the screen, skip this step and remove the battery last.

To reassemble your device, follow these instructions in reverse order.