



T-Mobile SDA (HTC Tornado) SD Card Replacement

This guide will show how to install an SD card in the T-Mobile SDA.

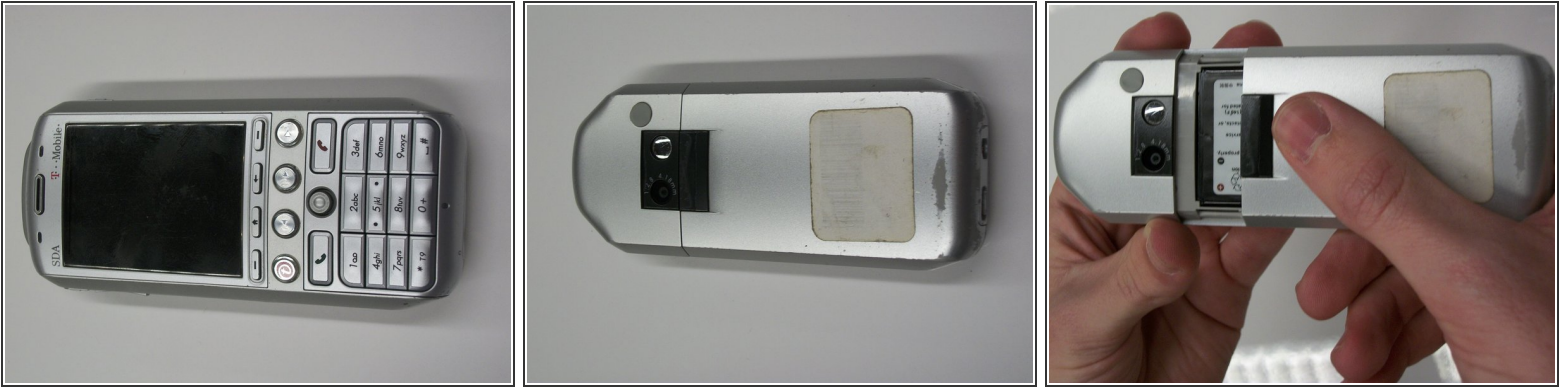
Written By: Colin Horgan



INTRODUCTION

This guide is useful if the SD card in the device is not working or properly installed.

Step 1 — Battery



- To remove the battery cover, first turn the phone so that the keypad is face down.
- While holding the phone with one hand, place the thumb of the other hand at the top of the battery cover.
- Slide the battery cover toward the bottom of the phone to remove.

Step 2



- To remove the battery, first grab it using a finger on either side.
- Pull the battery upward, while securing the phone with your other hand.
- Gently remove the battery and place it to the side of the phone.

Step 3 — SD Card



- Locate the slot for the SD card on the back of the phone. Insert the SD card so that the copper connectors on the card line up with the connectors on the phone (no card pictured).

Step 4



- Secure the SD card in place by sliding the silver tab over it (SD card not pictured).

To reassemble your device, follow these instructions in reverse order.