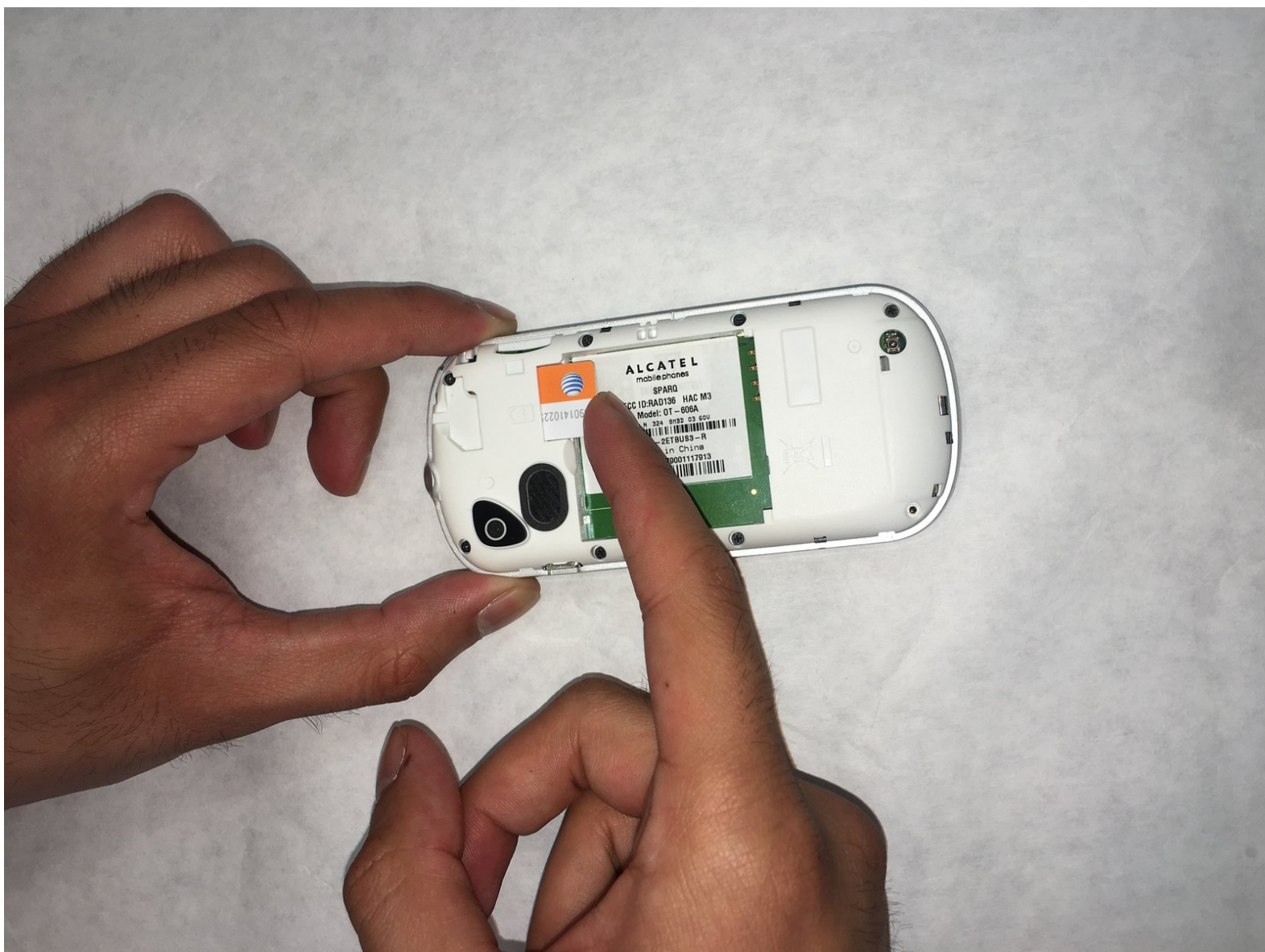




# T-Mobile Sparq SIM Card Replacement

How to replace the SIM card on a T-Mobile Sparq / Alcatel 606a.

Written By: LeAnn Lewis



---

## INTRODUCTION

This guide will show you how to replace the SIM card in a T-Mobile Sparq (or Alcatel 606a). It's a pretty simple process that involves removing the back cover of the phone, removing the battery and then taking out the SIM card for replacement - no serious disassembly required!

---

### **TOOLS:**

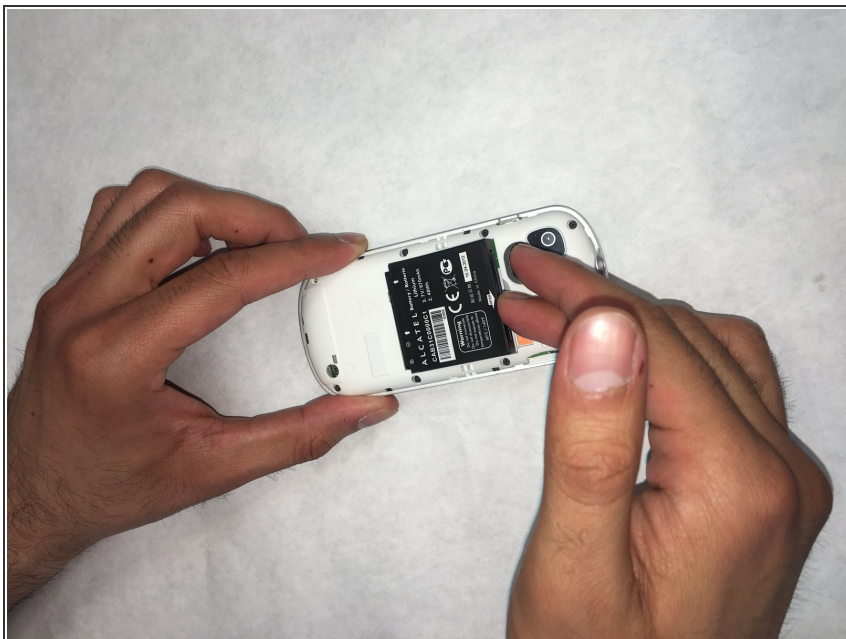
- [Spudger](#) (1)
-

## Step 1 — Battery



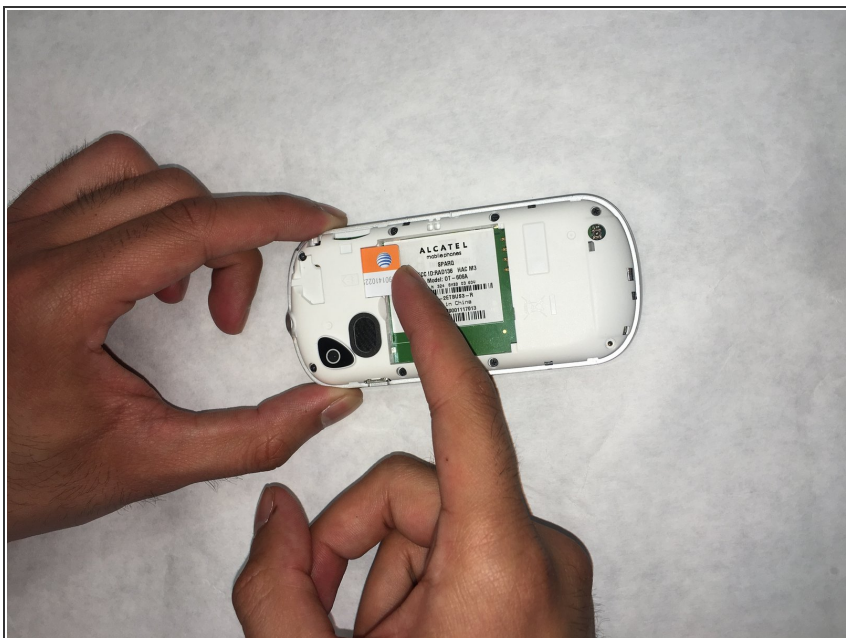
- If you're looking at your phone from the front, feel the upper left hand rounded corner. You'll notice a thin opening between the front of the phone and the back cover.
- Flip the phone over (as in the picture) and use a spudger or your finger to gently separate the back cover from the phone.

## Step 2



- Once the back cover has been removed you can see a small groove above the center of the battery. The arrow on the battery is pointing to it.
- Insert the tip of your finger into the groove and gently lift the battery from the case.

## Step 3 — SIM Card



- Once the battery has been removed the SIM card is easily accessible. Press your finger gently on top of

---

the exposed SIM card and slide it in the direction of the battery compartment until it comes out.

---

To reassemble your device, follow these instructions in reverse order.