



# TC-WE825S Power Button Replacement

Replace the power button on your TC-WE825S cassette player.

Written By: Cameron



---

# INTRODUCTION

Use this guide to replace the power button of your TC-WE825S cassette player.

---



## TOOLS:

- [Phillips #1 Screwdriver](#) (1)
  - [Forceps](#) (1)
  - [Soldering Iron](#) (1)
-

## Step 1 — TC-WE825S Power Button



- Unscrew the 8mm Phillips head screws from the left and right sides of the cassette player.

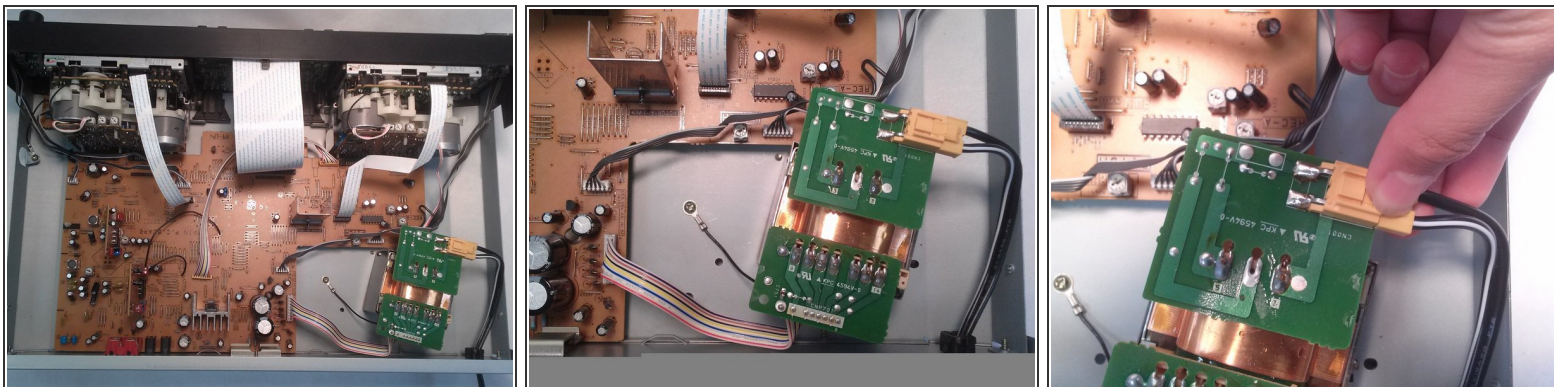
## Step 2



- Unscrew the 8mm Phillips head screw from the back of the cassette panel. Remove the cover.

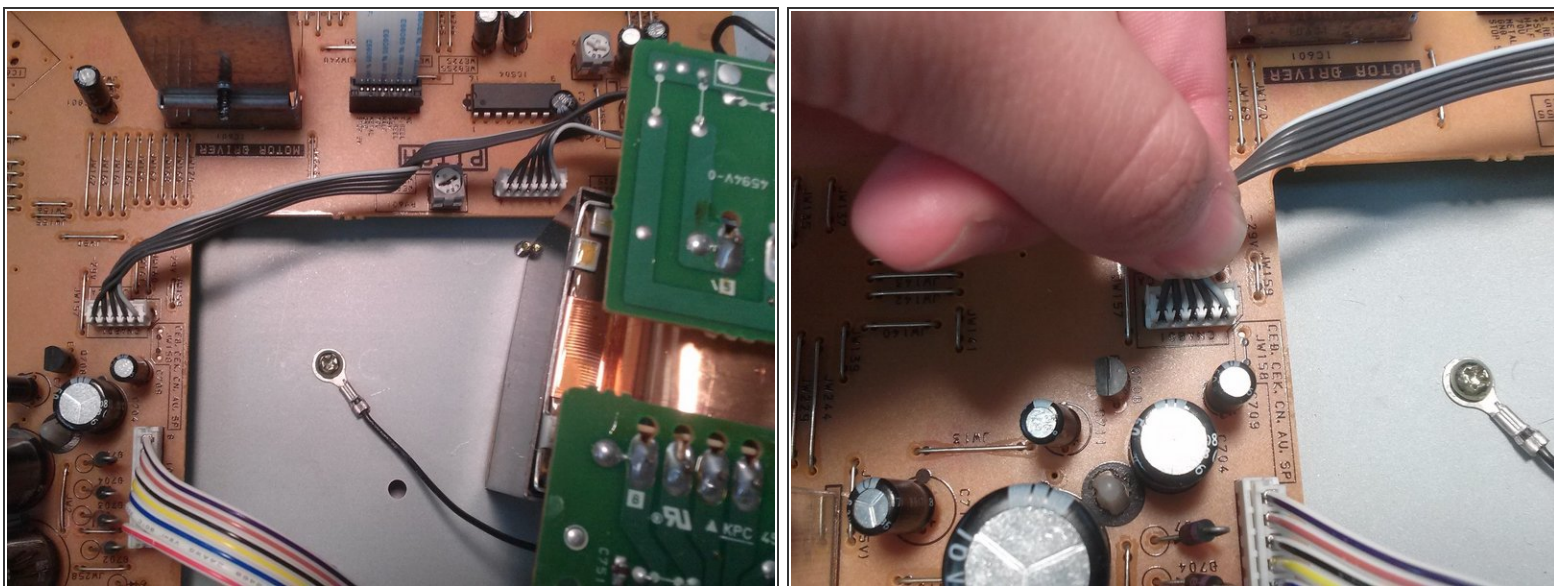


### Step 3



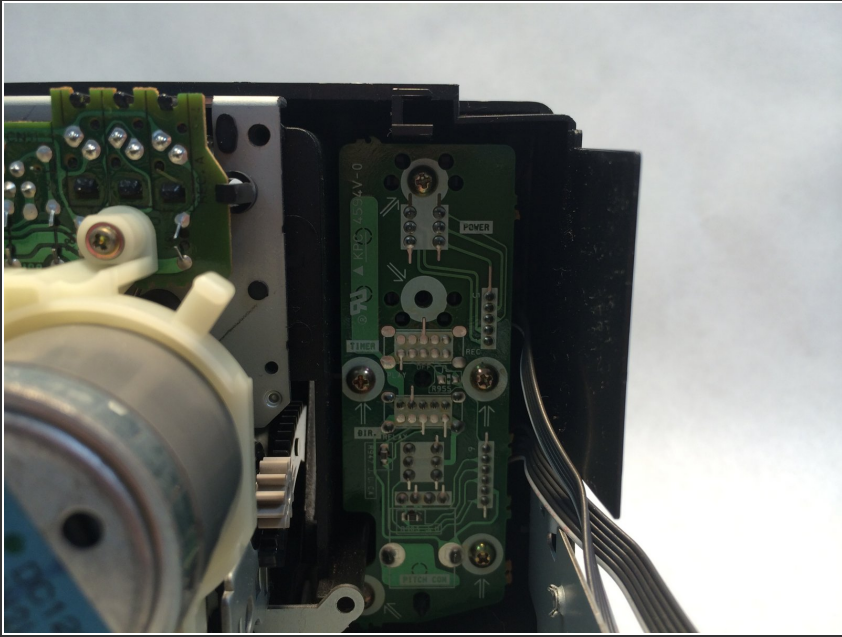
- Locate the power cord connection and disconnect it. To remove it, press down on the plastic tab and slowly slide it out of the socket.

### Step 4



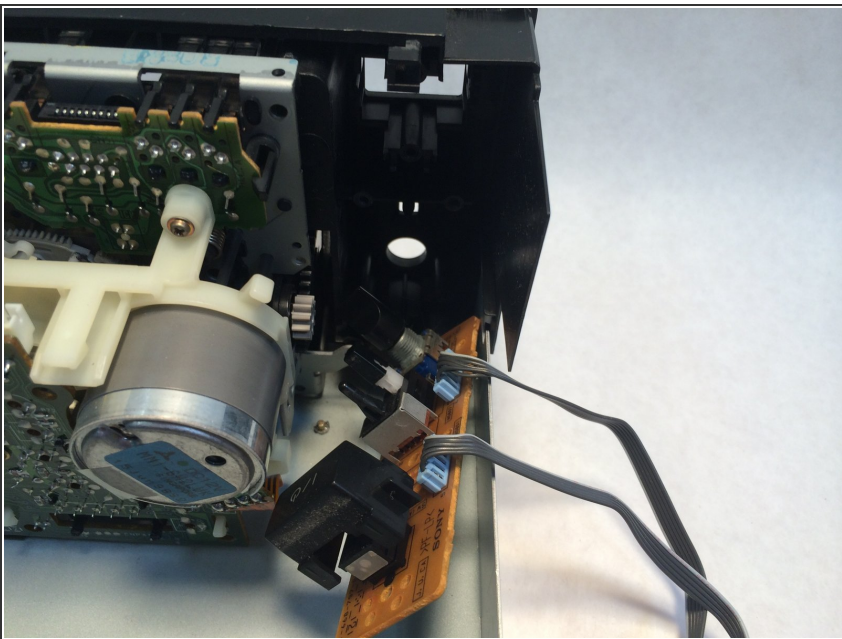
- Locate the cords that are connected to the power button. Remove the connection by tugging on the cords gently, releasing them from the main PC board.

## Step 5



- Unscrew all five 7.5mm Phillips head screws from the PCB (printed circuit board) behind the power switch.

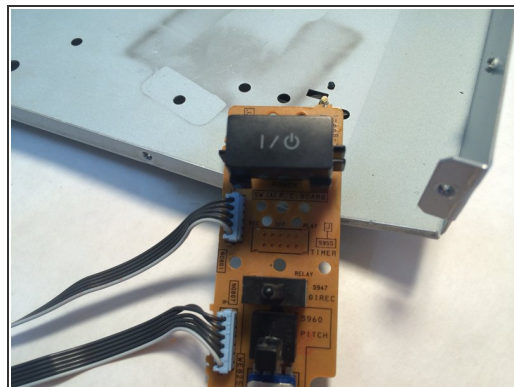
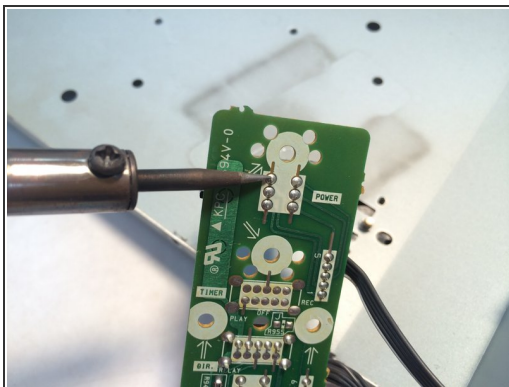
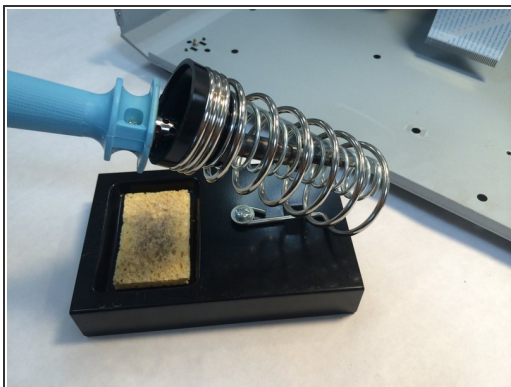
## Step 6



- Use forceps to gently pry the PCB from the frame of the cassette player.



## Step 7



- Use a soldering iron to desolder the power switch's terminals and connections. Remove the power switch, replace it, and solder it back together. Repeat these steps in reverse order to put the cassette player back together.

To reassemble your device, follow these instructions in reverse order.