



# TI-36X Pro Front Cover Replacement

This guide gives instructions on replacing the front cover for a TI-36X Pro

Written By: Robert Sekerak



# INTRODUCTION

For this guide you will remove all of the internal components in order to access the front cover.

---

## TOOLS:

- [Phillips #0 Screwdriver](#) (1)
  - [Phillips #00 Screwdriver](#) (1)
  - [Chisel](#) (1)
  - [Spudger](#) (1)
-

## Step 1 — Back Cover



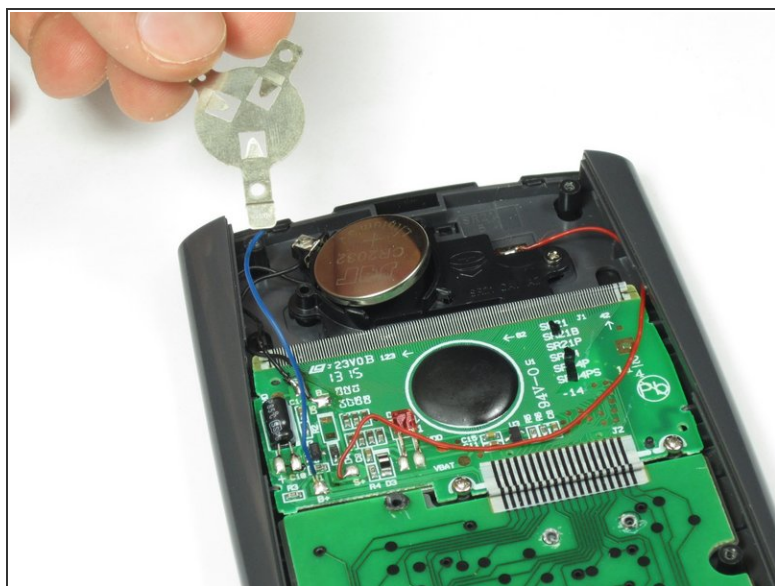
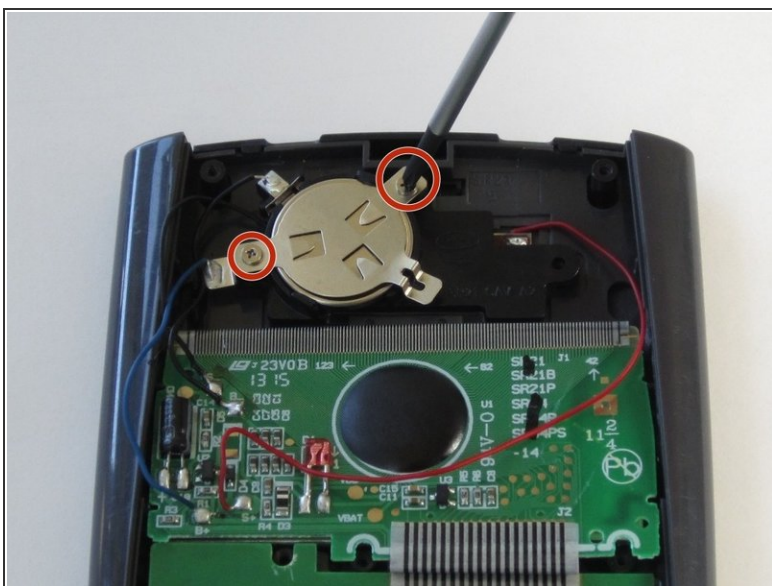
- Remove the calculator's protective cover.
- Place the calculator face down.

## Step 2



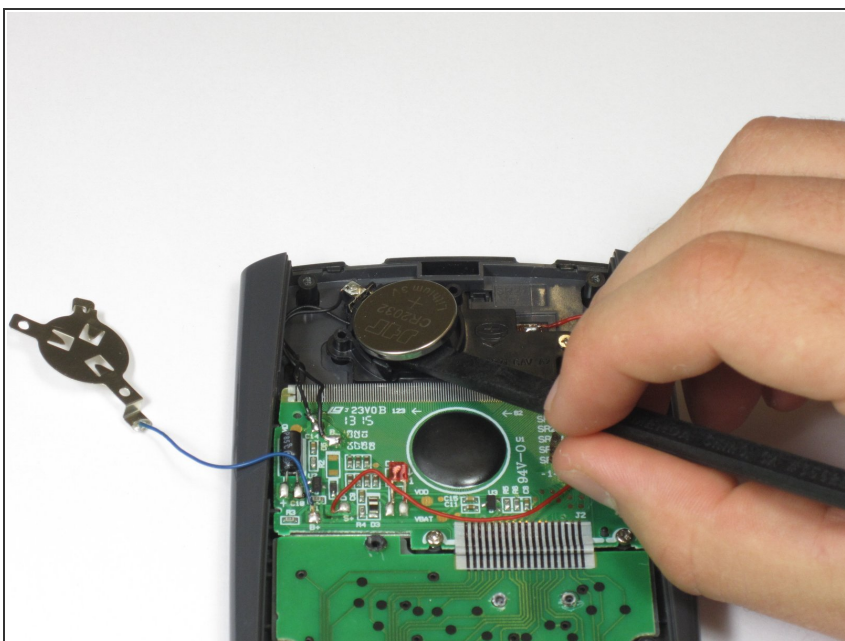
- Using a Phillips #1 screwdriver, remove the six 6mm screws from the back of the case and place them to the side.
- Start from the notches on the top edge and use your fingers or a prying tool to carefully pry the back cover from the calculator.

## Step 3 — Battery



- Use a Phillips #00 screwdriver to remove the two 7.5 mm screws holding the battery cover to the case.
- ⚠ Remove the battery cover without disconnecting either end of the blue wire.
- Use your finger to move the battery cover to the side.

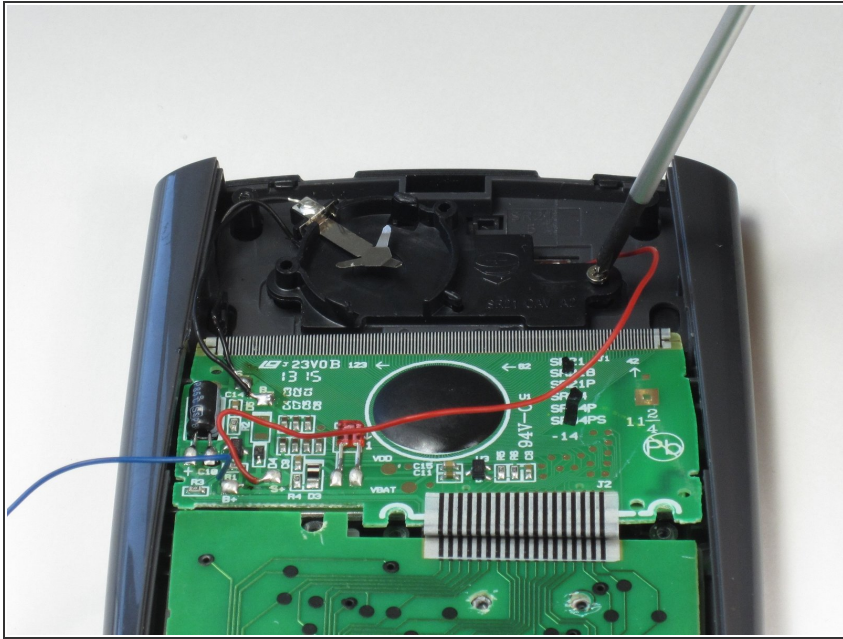
## Step 4



- Use the flat side of a spudger to remove the battery by lifting the bottom edge.
- ☑ When inserting a new battery, check the polarity (+ or -) and insert the new battery with the + side on top.

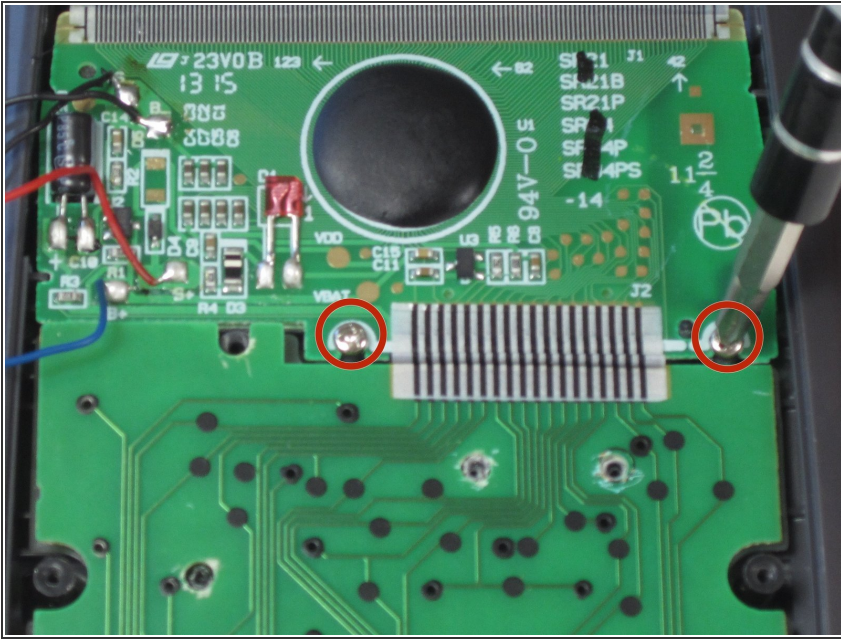


## Step 5 — Button



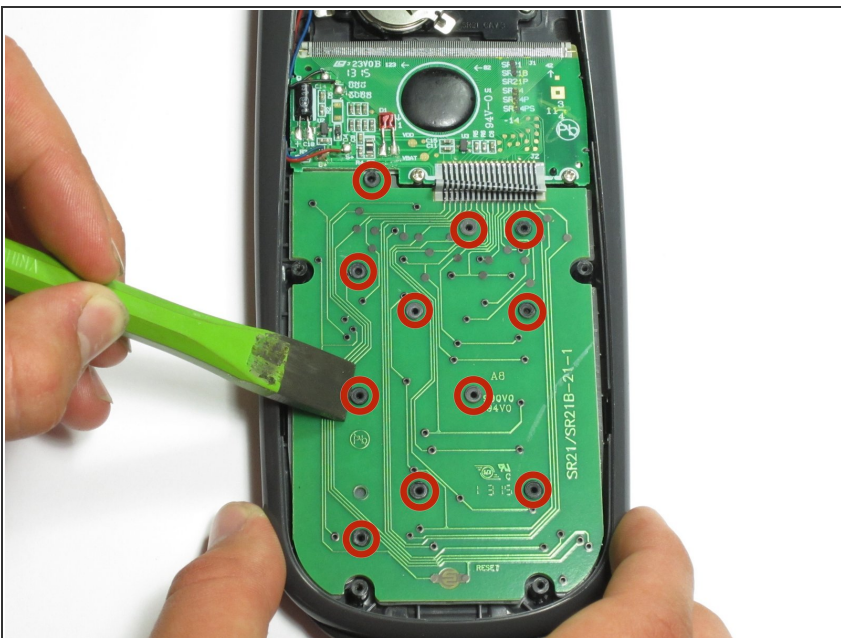
- After removing the battery, use a Phillips #00 screwdriver to take out the 4.5mm screw directly to the right of the solar panel.
- ⚠ Do not disconnect any wires or you will need to solder them back on.

## Step 6



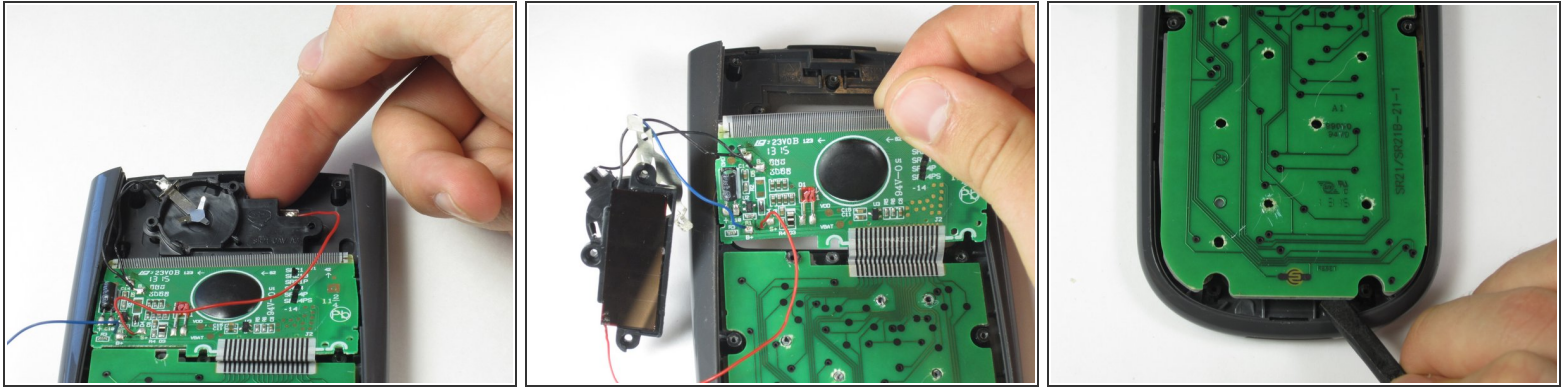
- Next, use a Phillips #00 screwdriver to remove the two screws located on each side of the striped ribbon between the two green circuit boards.

## Step 7



- ⚠ Be careful not to scratch the gold lines on the circuit board since it may damage the circuit.
- Carefully chisel off the 11 circular pieces that connect the lower circuit board to the calculator.
- ★ When reassembling the calculator, glue the lower circuit board back in place by dabbing glue into the holes that you chiseled.

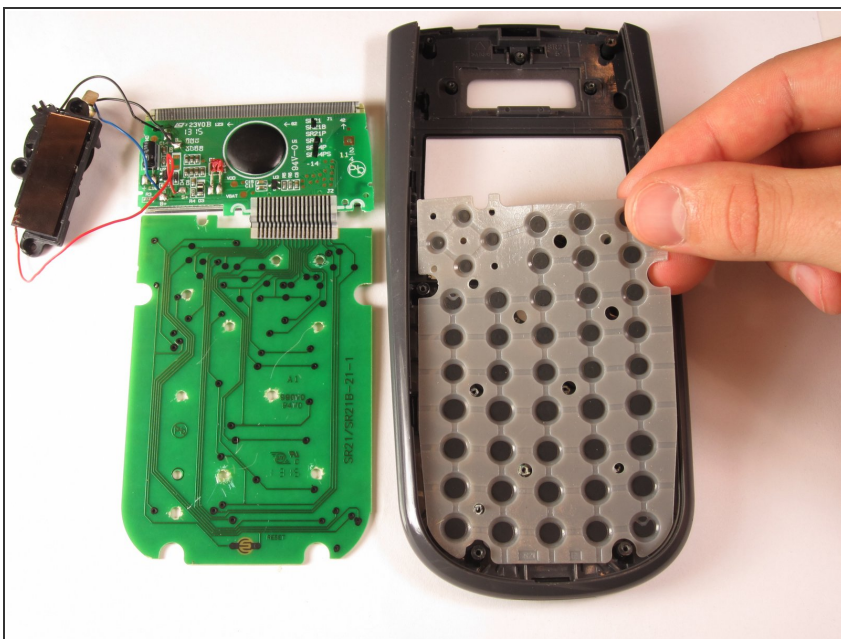
## Step 8



**⚠** When removing the parts from the calculator be careful not to break any wires or ribbons. The solar panel, screen, and lower circuit board should remain connected throughout this guide.

- Lift the top edge of the solar panel with a finger and slide it away from the circuit board to disconnect it from the calculator.
- Carefully pry the screen out of the calculator with a prying tool or spudger.
- Pry the lower circuit board from the calculator by inserting a prying tool between the base of the calculator and the circuit board.

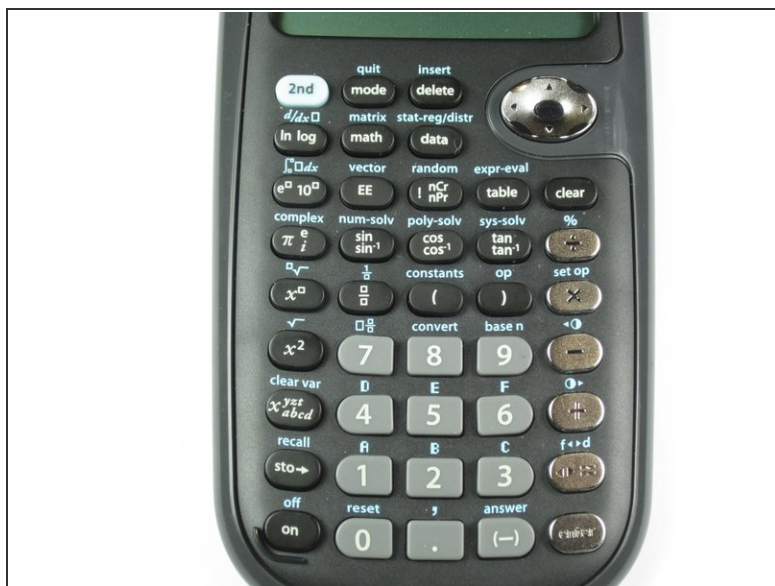
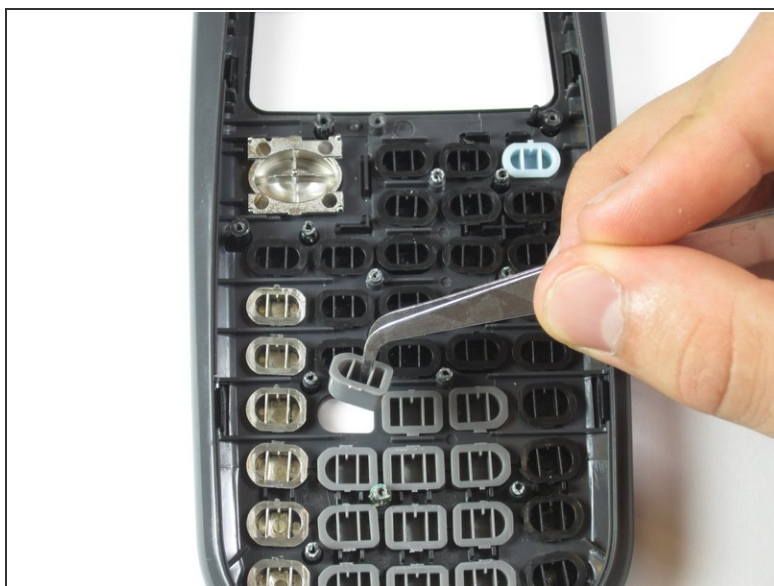
## Step 9



- Grab one of the top corners of the gray rubber button pad and peel it off of the buttons.
- i** If you turn the calculator over, all of the buttons will fall out.



## Step 10



- Locate the button that needs replacement and lift it out of the calculator with tweezers.

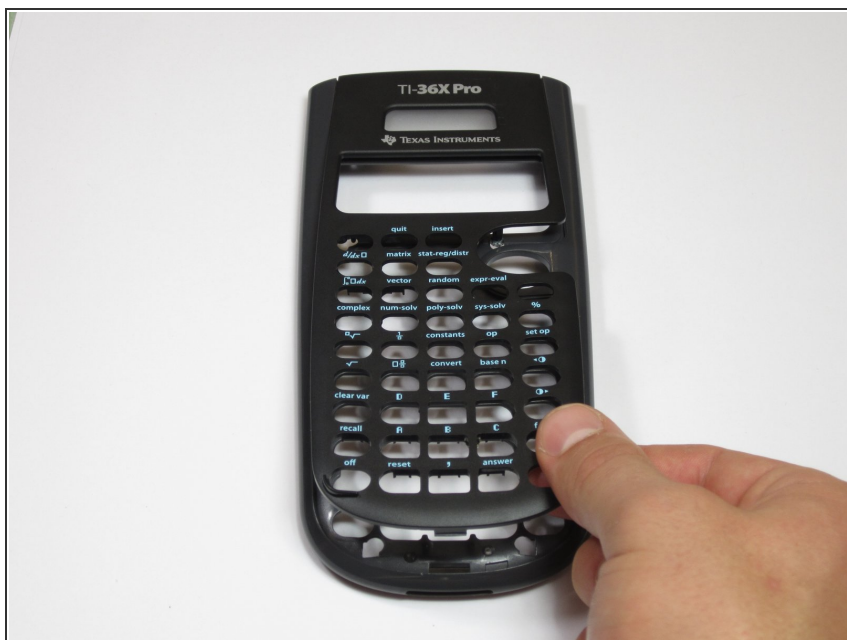
☛ If the buttons do fall out, use the second picture to put them back properly.

## Step 11 — Front Cover



- Empty the buttons into a bag or place them somewhere that they will not be lost.
- Using a spudger, undo the 5 clips around the edge of the casing that connect the front cover to the calculator.

## Step 12



- Pry the front cover off of the calculator with a prying tool from the bottom up.

To reassemble your device, follow these instructions in reverse order.