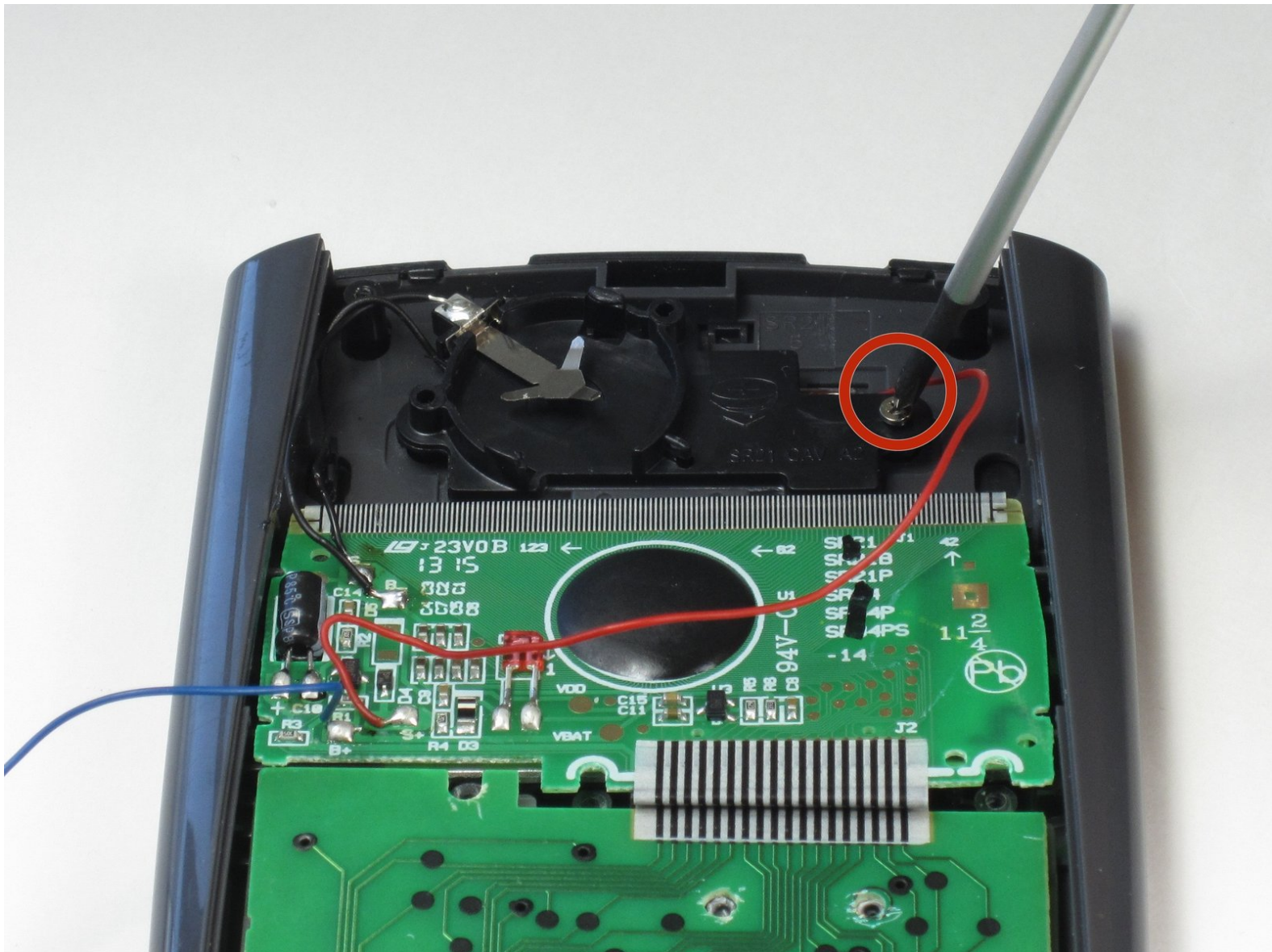




TI-36X Pro Solar Panel Replacement

This guide will give instruction on how to replace the solar panel.

Written By: James Roslund



INTRODUCTION

For this guide you will remove the back cover, battery cover, and battery in order to replace the solar panel.



TOOLS:

- [Phillips #1 Screwdriver](#) (1)
 - [Phillips #00 Screwdriver](#) (1)
 - [Spudger](#) (1)
 - [Soldering Iron](#) (1)
 - [Solder](#) (1)
-

Step 1 — Back Cover



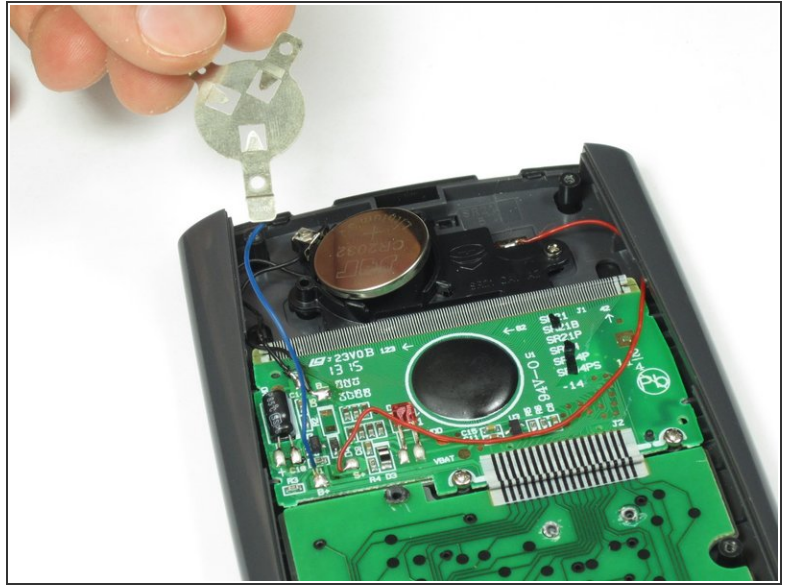
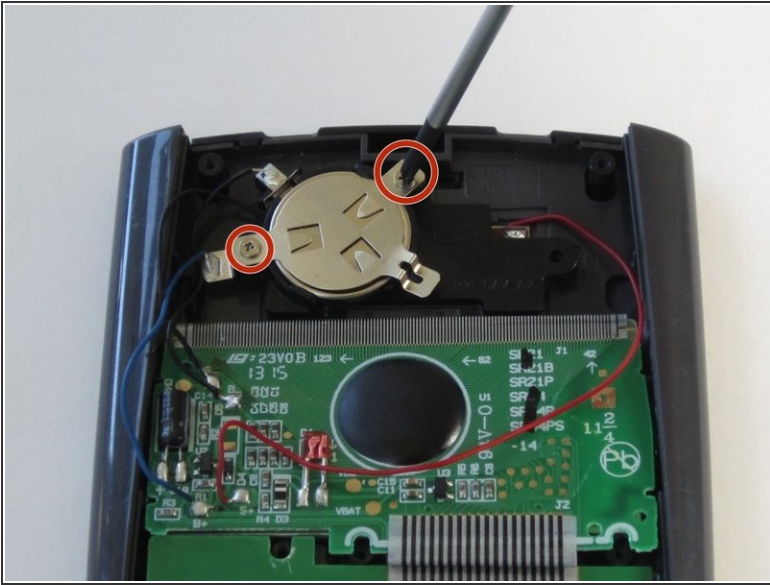
- Remove the calculator's protective cover.
- Place the calculator face down.

Step 2



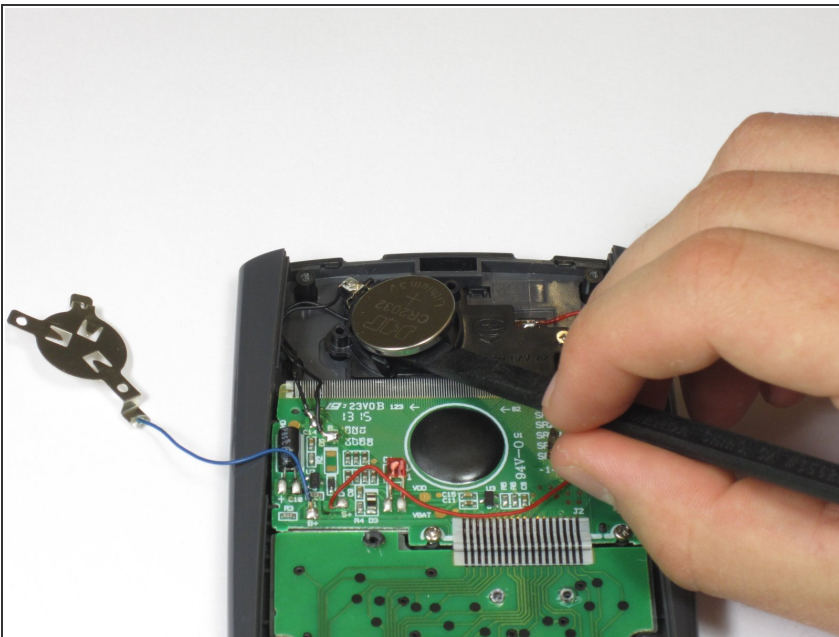
- Using a Phillips #1 screwdriver, remove the six 6mm screws from the back of the case and place them to the side.
- Start from the notches on the top edge and use your fingers or a prying tool to carefully pry the back cover from the calculator.

Step 3 — Battery



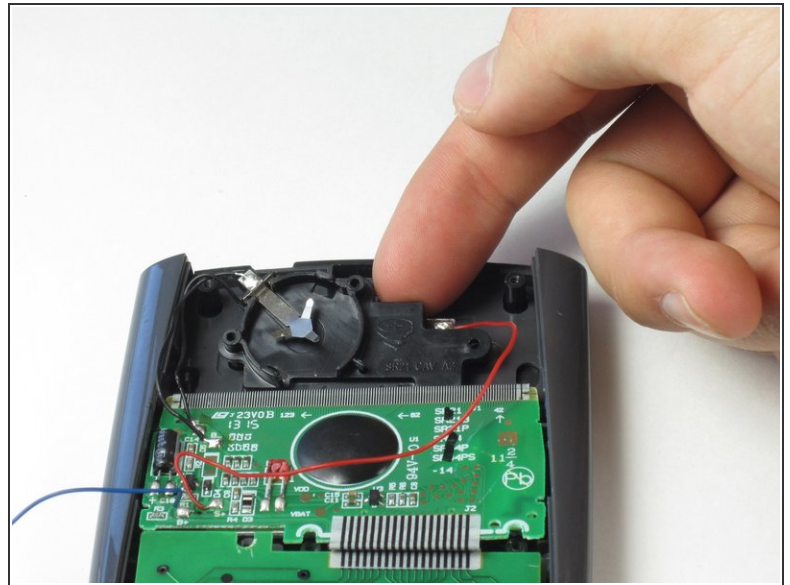
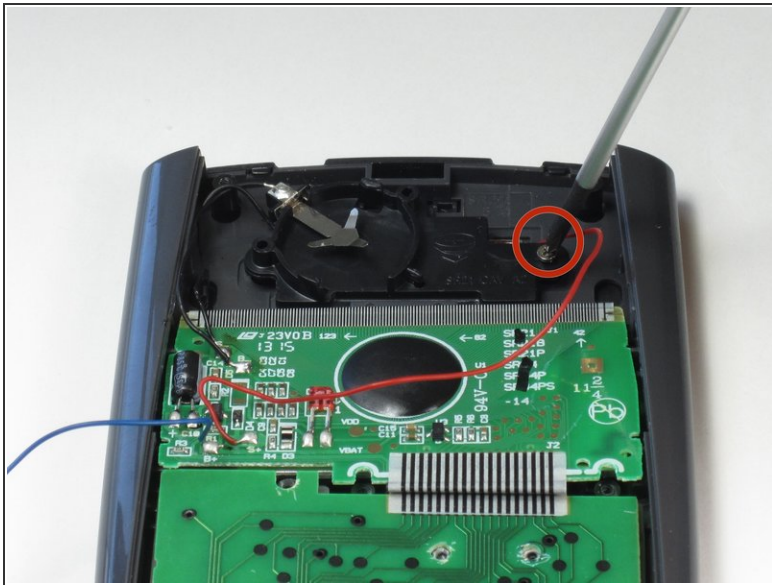
- Use a Phillips #00 screwdriver to remove the two 7.5 mm screws holding the battery cover to the case.
- ⚠ Remove the battery cover without disconnecting either end of the blue wire.
- Use your finger to move the battery cover to the side.


Step 4



- Use the flat side of a spudger to remove the battery by lifting the bottom edge.
- ☑ When inserting a new battery, check the polarity (+ or -) and insert the new battery with the + side on top.

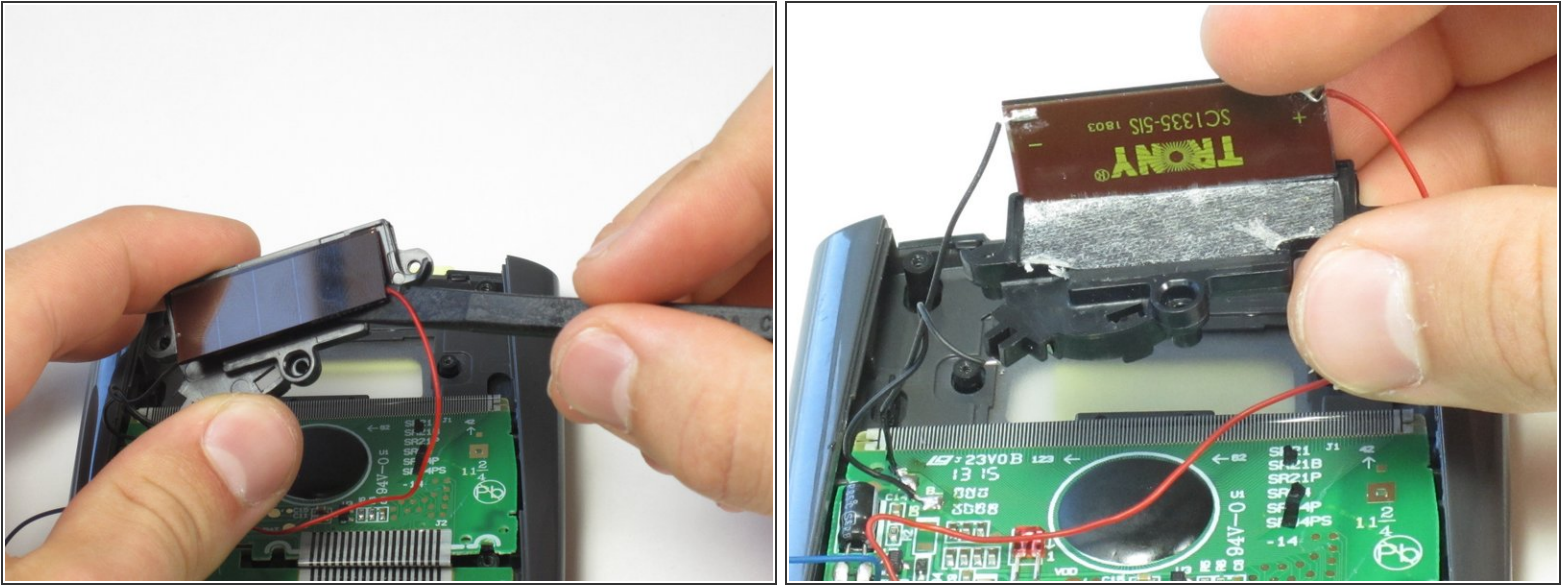
Step 5 — Solar Panel



 Be careful not to disconnect any wires when removing parts from the calculator.


- To detach the solar panel, use a Phillips #00 screwdriver to remove the 4.5mm screw that connects the solar panel to the calculator.
- Once the screw has been removed, you may lift the top of the black solar panel cover with your finger and gently pull away from the green circuit board.

Step 6

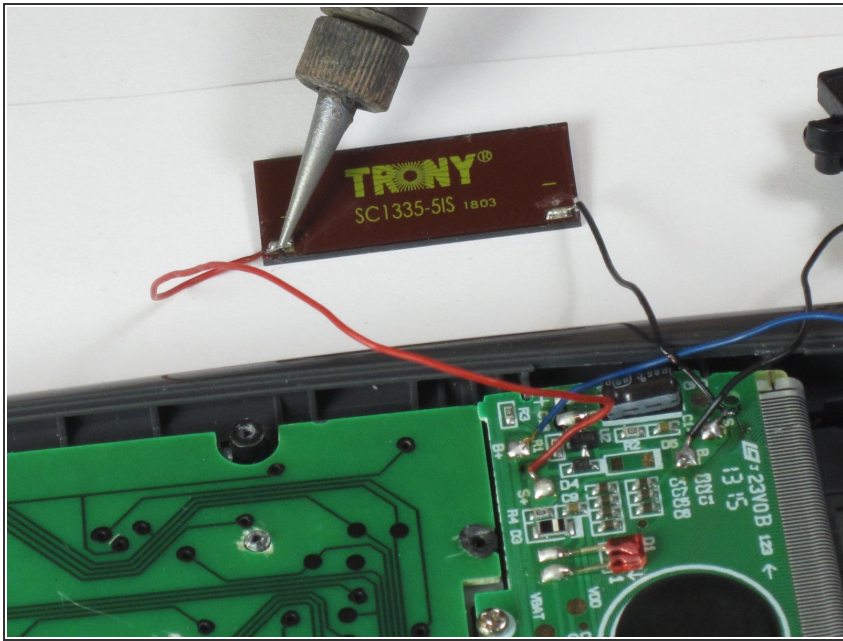


- Turn the black cover so the solar panel is facing you.

 Do not use a prying motion when removing the solar panel as this might break it.

- Insert the flat end of the spudger between the solar panel and the black cover at the corner where the red wire connects.
- Carefully slide the spudger all the way underneath the solar panel until it detaches from the tape.
-  If the solar panel does not completely disconnect once you have fully inserted the spudger, you can gently pull or pry it the rest of the way off.

Step 7



- De-solder and disconnect the red and black wires from the solar panel.

⚠ You may irreperably damage your calculator if you connect the black and red wires to the wrong sides. Red connects with the "+" and black with the "-" sign.

To reassemble your device, follow these instructions in reverse order.