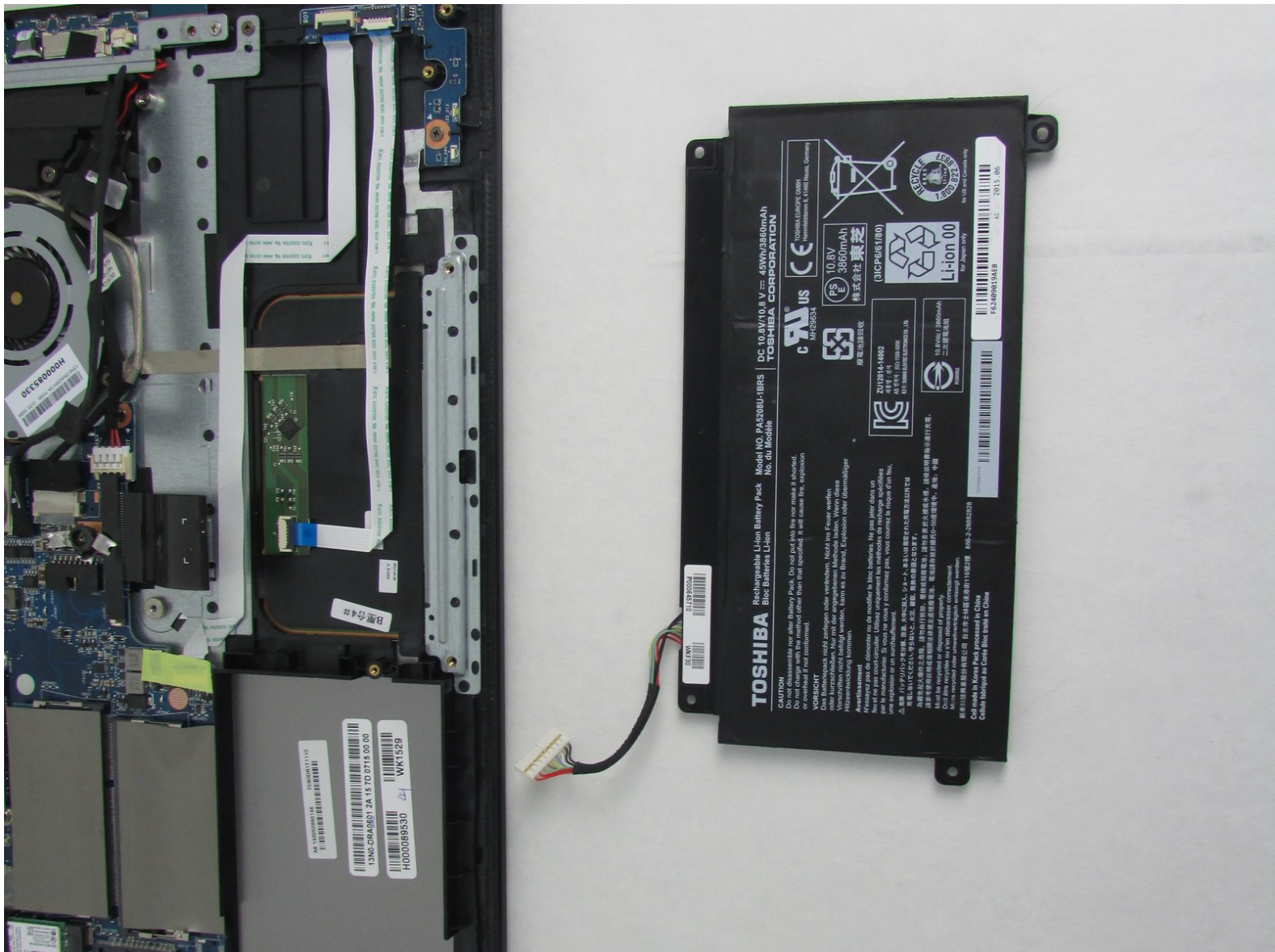




# TOSHIBA Satellite E45W-C4200X Battery Replacement

How to replace the battery pack in a Toshiba Satellite Radius 14", model number E45W-C4200X.

Written By: John Tangney



## INTRODUCTION

This guide will walk you through the necessary steps for replacing the battery pack in your Toshiba Satellite E45W-C4200X.

The battery is a vital piece of hardware that allows the laptop to run when not plugged in. A defective battery can prevent the laptop from turning and can result in longer charging times or short battery life.

Before using this guide, make sure to review the [troubleshooting page](#) oftentimes, the battery can be fixed without replacing it.

Make sure to power off your laptop completely and disconnect from any external power source prior to beginning the process.



### TOOLS:

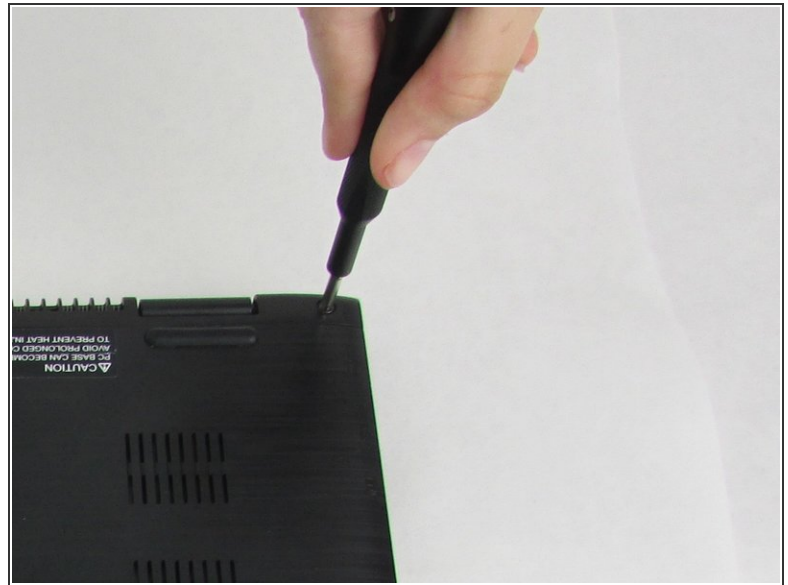
- [Phillips #1 Screwdriver](#) (1)
- [iFixit Opening Tools](#) (1)



### PARTS:

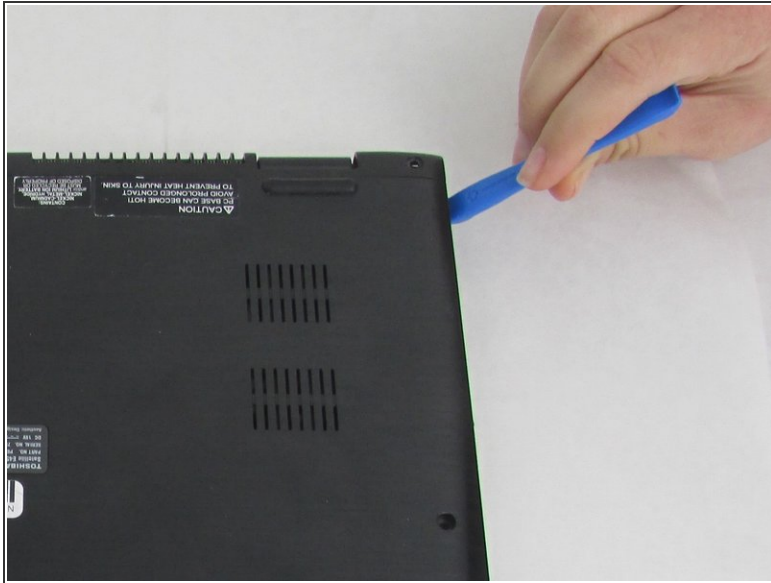
- [Toshiba Satellite E45W-C4200X battery](#) (1)

## Step 1 — Battery



- Remove the ten 1 mm screws that secure the back cover using a Phillips #1 screwdriver.

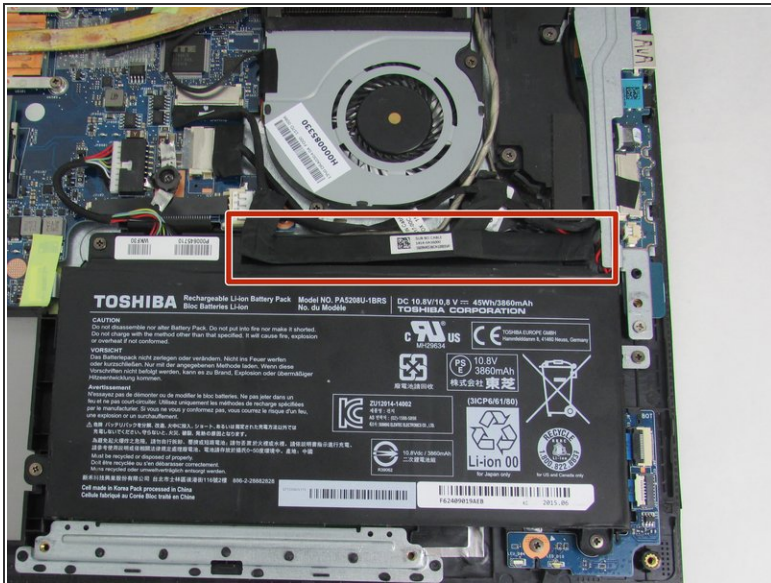
## Step 2



- Use plastic opening tool to separate the back cover from the laptop.
  - ⚠ Go slowly and be careful as the plastic can crack.
  - ℹ It is recommend that you start from a corner and run the tool along the edge.
- Lift and remove the casing.



## Step 3



- Gently lift the flap covering the top side of the battery.

## Step 4



- Remove the four 0.5 mm screws that hold the battery in using the Phillips #1 screwdriver.



## Step 5



- Unplug the battery from the motherboard.

## Step 6



- Remove the battery from the laptop.

To reassemble your device, follow these instructions in reverse order.