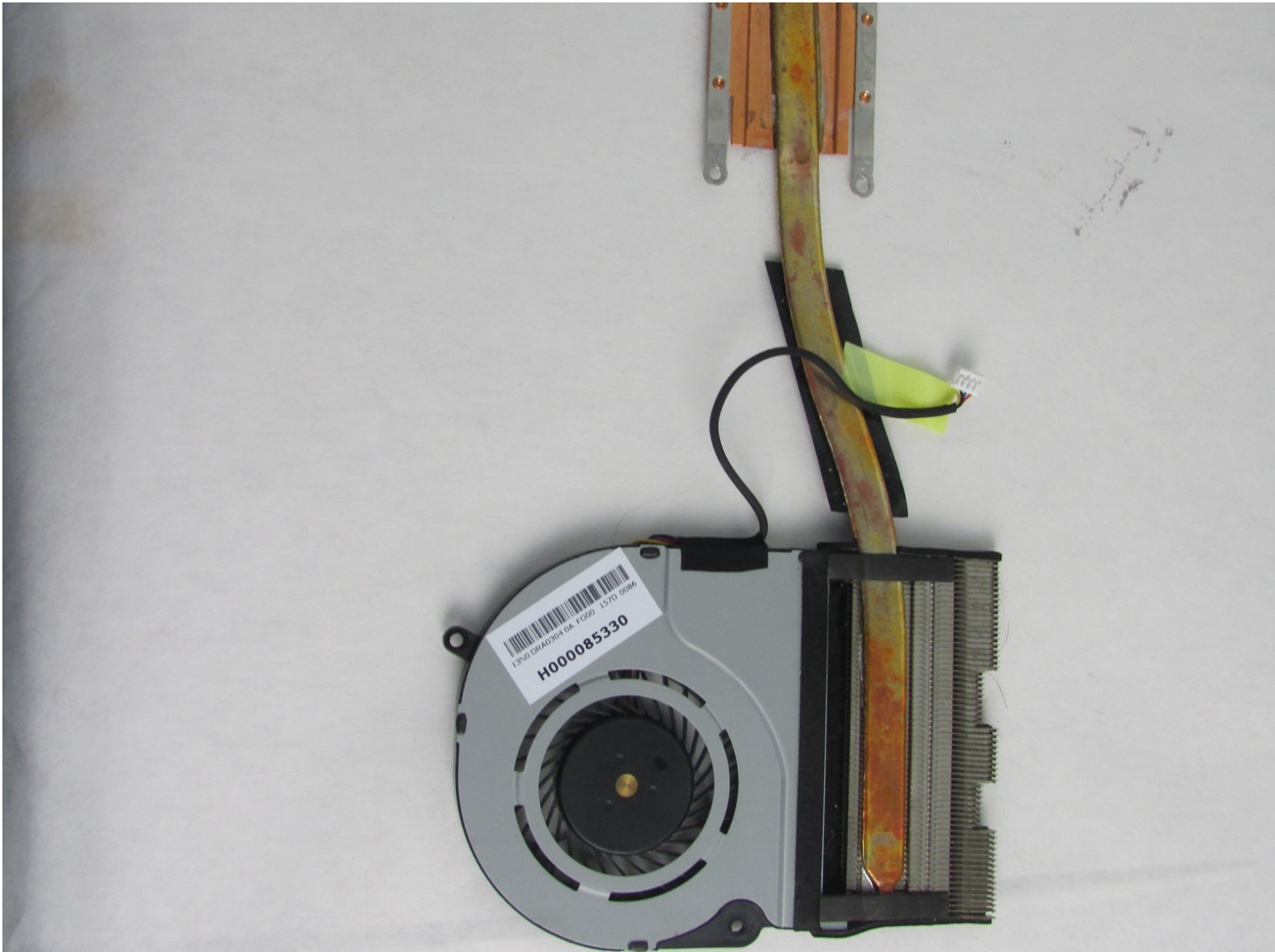




# TOSHIBA Satellite E45W-C4200X Cooling Fan Replacement

How to replace the cooling fan in a Toshiba Satellite Radius 14", model number E45W-C4200X.

Written By: John Tangney



## INTRODUCTION

This guide will walk you through the necessary steps for replacing the cooling fan in your Toshiba Satellite E45W-C4200X.

The cooling fan is a vital piece of hardware that prevents the computer from overheating and damaging the motherboard.

Before using this guide, make sure to review the [troubleshooting page](#) to ensure the fan will need to be replaced.

Make sure to power off your laptop completely and disconnect from any external power source prior to beginning the process.



### TOOLS:

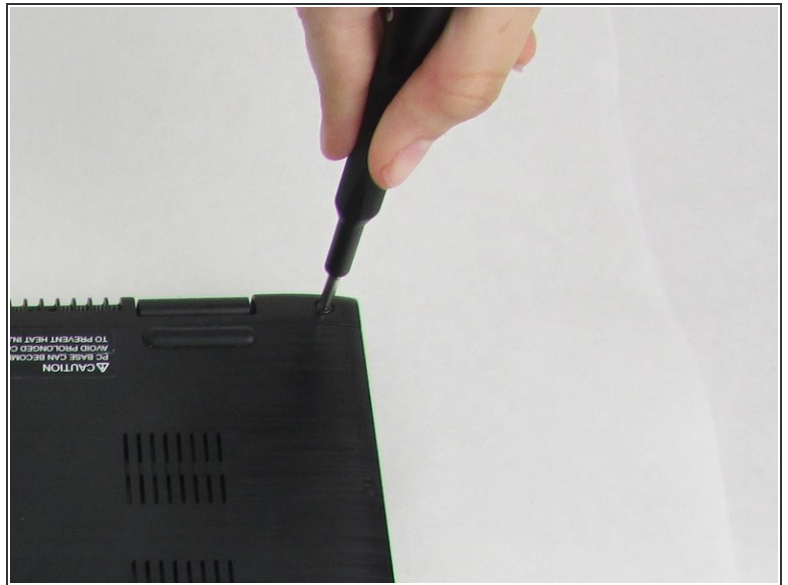
- [iFixit Opening Tools](#) (1)
- [Phillips #1 Screwdriver](#) (1)



### PARTS:

- [Toshiba satellite E45W-C4200X Cooling Fan](#) (1)

## Step 1 — Cooling Fan



- Using the phillips #1 screwdriver, remove the ten 1 mm screws from the back panel of the device.

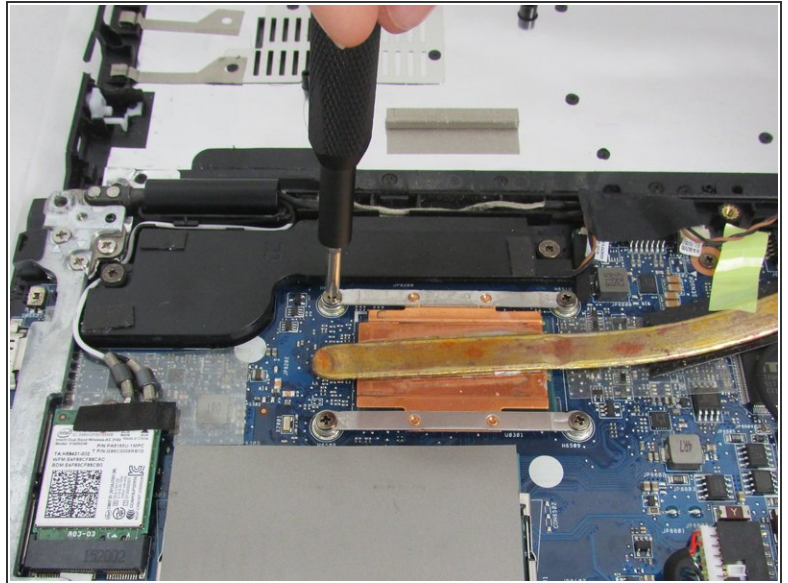
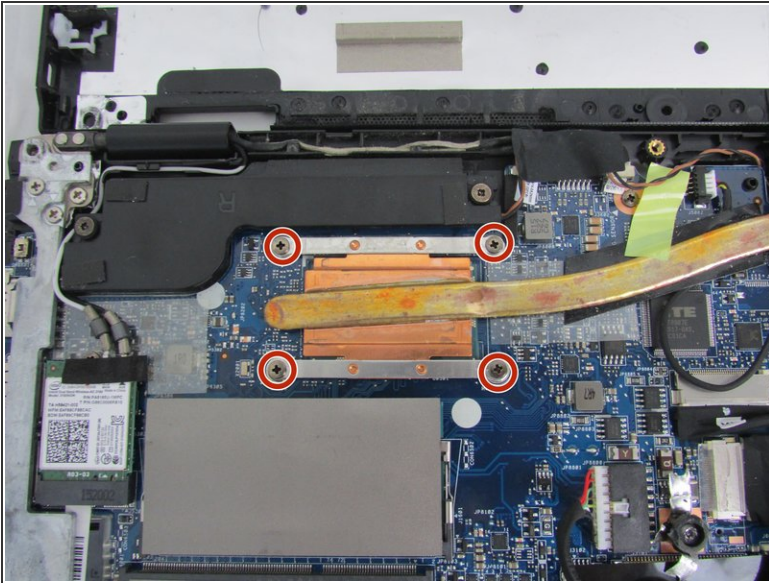
## Step 2



- Use plastic opening tool to separate the back cover from the laptop.
- ⚠ Go slowly and be careful as the plastic can crack.
- ℹ It is recommend that you start from a corner and run the tool along the edge.

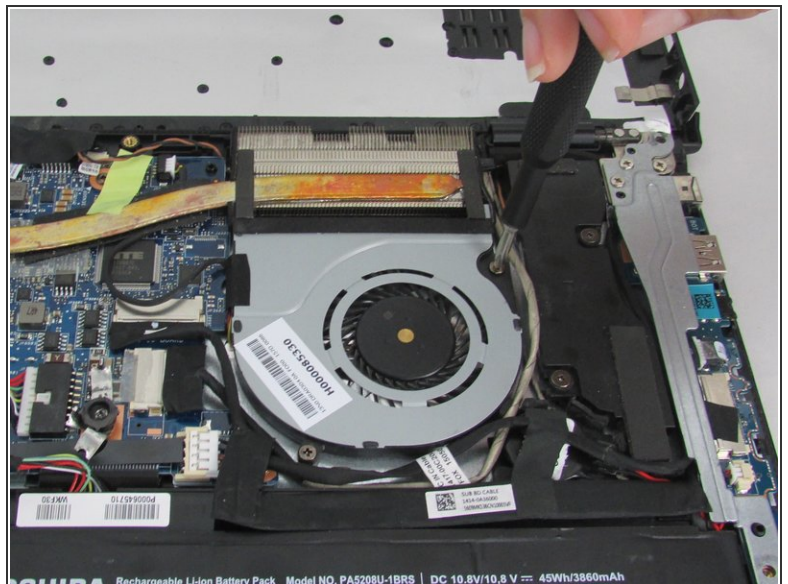


### Step 3



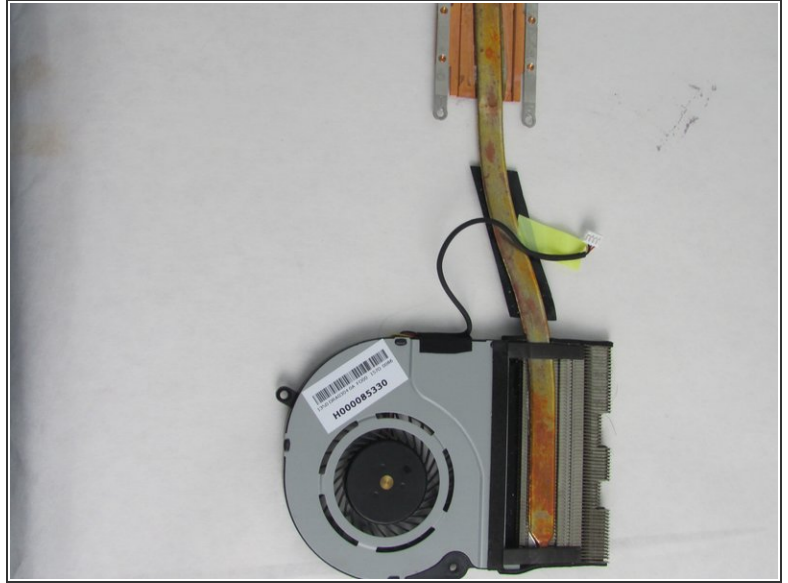
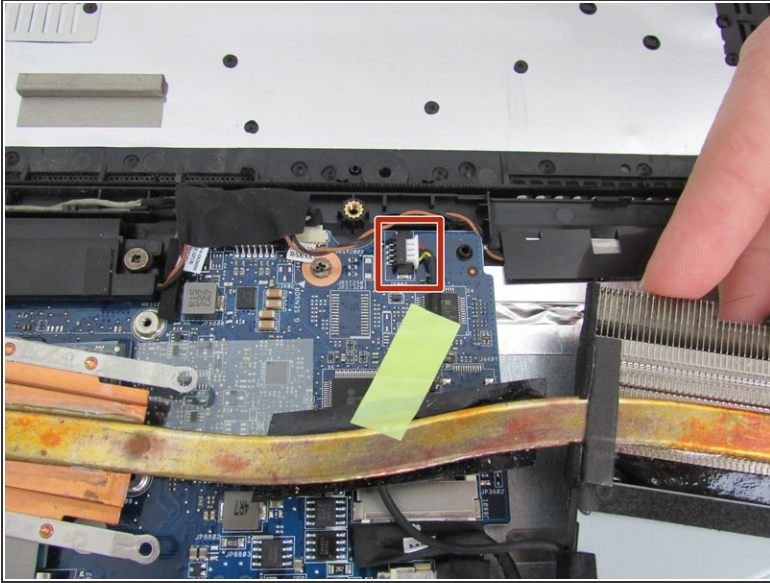
- Remove the four .5 mm screws that secure the heat sink using a Phillips #1 screwdriver.

### Step 4



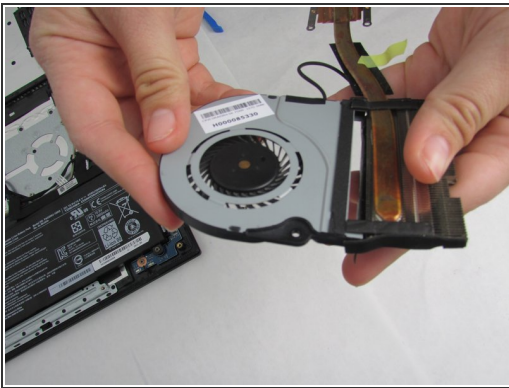
- Remove the two 1 mm screws that secure the cooling fan using a Phillips #1 screwdriver.

## Step 5



- Disconnect the fan cord from the harness.
- Remove the cooling fan and heat sink from the laptop.

## Step 6



- Carefully peel off the tape holding the heat sink onto the cooling fan.
  - ⚠ Peel carefully as the tape goes around all four sides.
- Remove the cooling fan from the heat sink.

To reassemble your device, follow these instructions in reverse order.

