



# TOSHIBA Satellite E45W-C4200X Motherboard Replacement

This guide will assist in the replacement of the motherboard for the Toshiba Satellite E45W-C4200X.

Written By: Tim Guilbeault



## INTRODUCTION

This guide will walk you through the necessary steps for replacing the motherboard in your Toshiba Satellite E45W-C4200X.

The motherboard is arguably the most important component in the laptop. This printed circuit board contains all the main components that operate your computer.

Before using this guide, make sure to review the troubleshooting page oftentimes, the battery can be fixed without replacing it.

If possible, back up your computer to an external hard drive before this replacement. Make sure to power off your laptop completely and disconnect from any external power source prior to beginning the replacement.



### TOOLS:

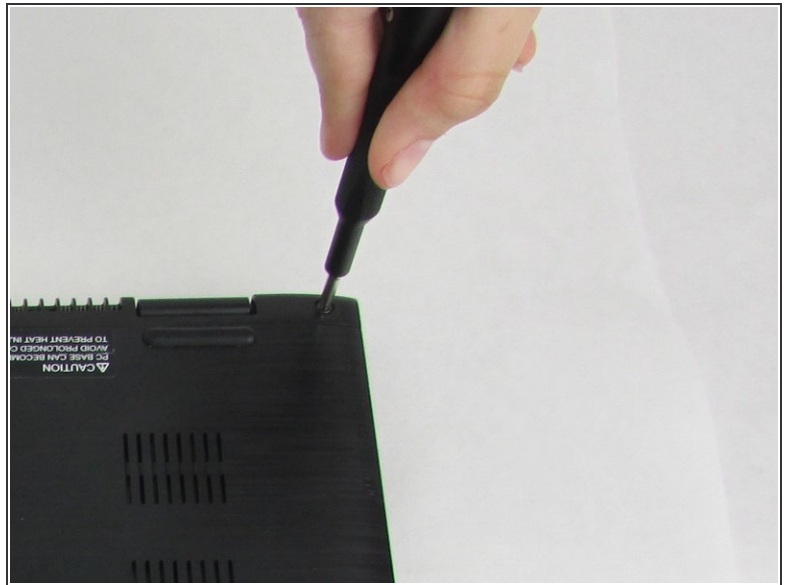
- [Phillips #1 Screwdriver](#) (1)
- [iFixit Opening Tools](#) (1)
- [Anti-Static Wrist Strap](#) (1)



### PARTS:

- [Toshiba Satellite E45W-C4200X Motherboard](#) (1)

## Step 1 — Cooling Fan



- Using the phillips #1 screwdriver, remove the ten 1 mm screws from the back panel of the device.

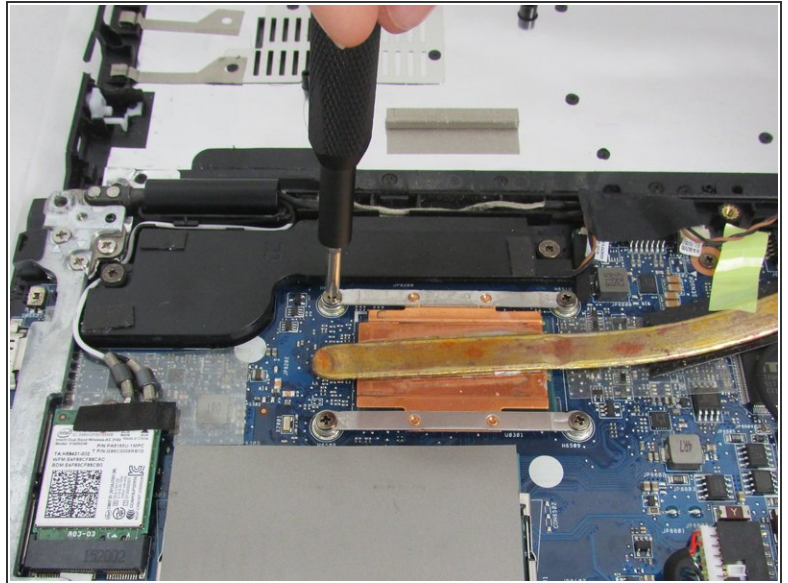
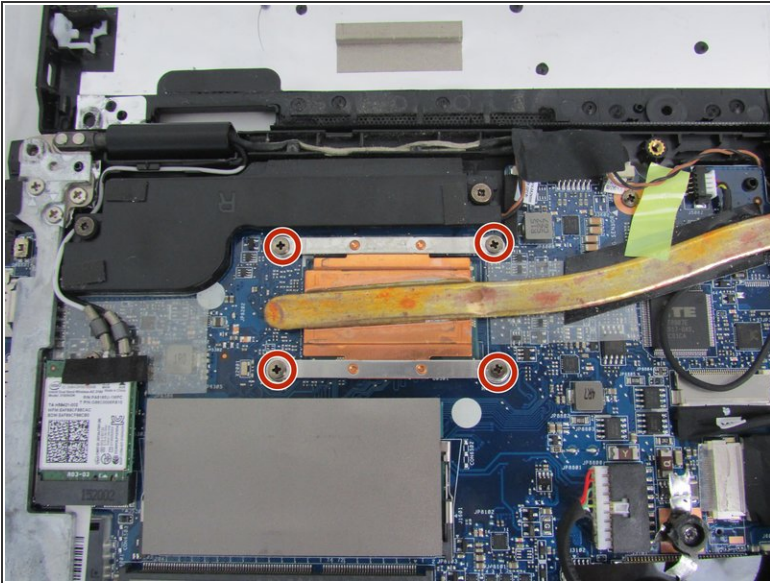
## Step 2



- Use plastic opening tool to separate the back cover from the laptop.
- ⚠ Go slowly and be careful as the plastic can crack.
- ℹ It is recommend that you start from a corner and run the tool along the edge.

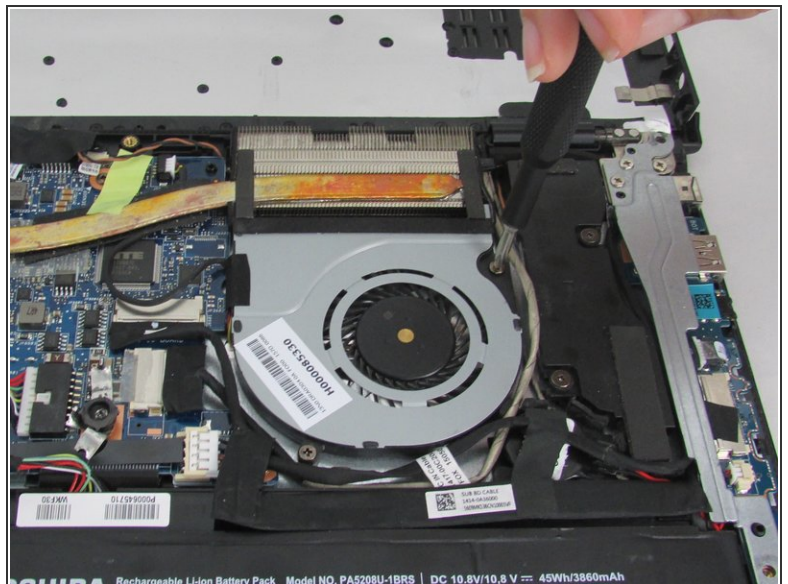
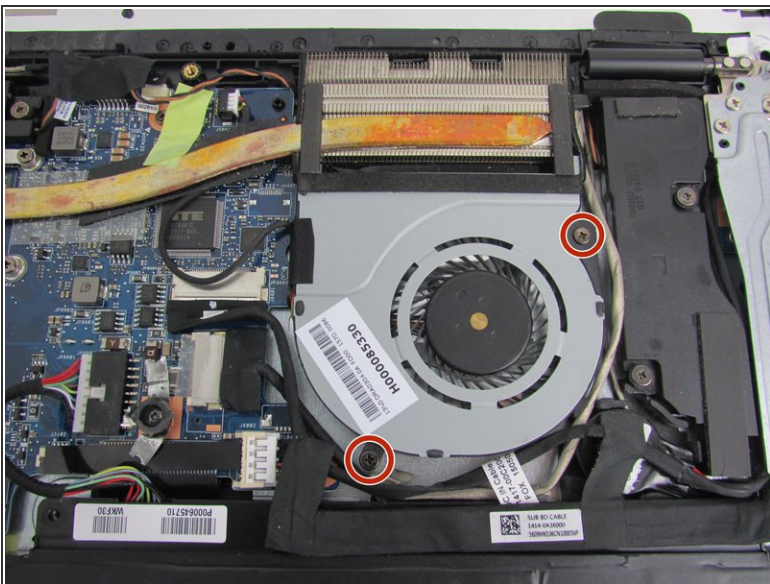


### Step 3



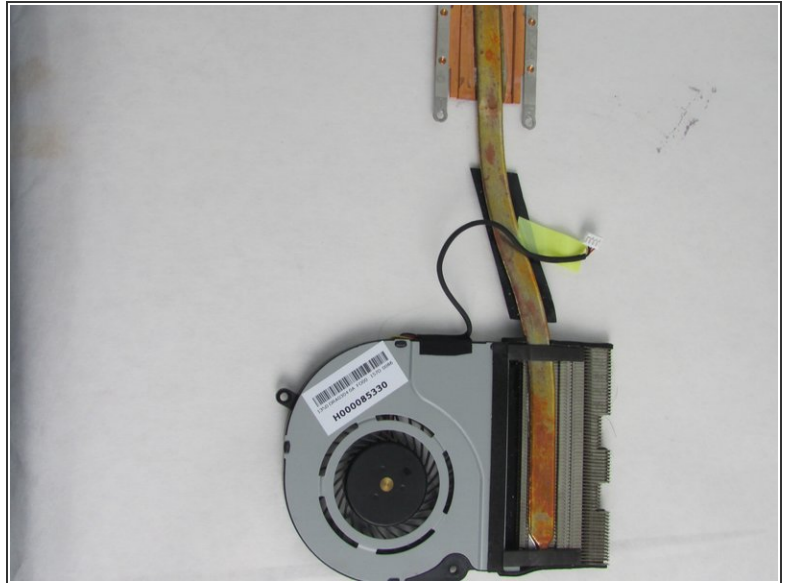
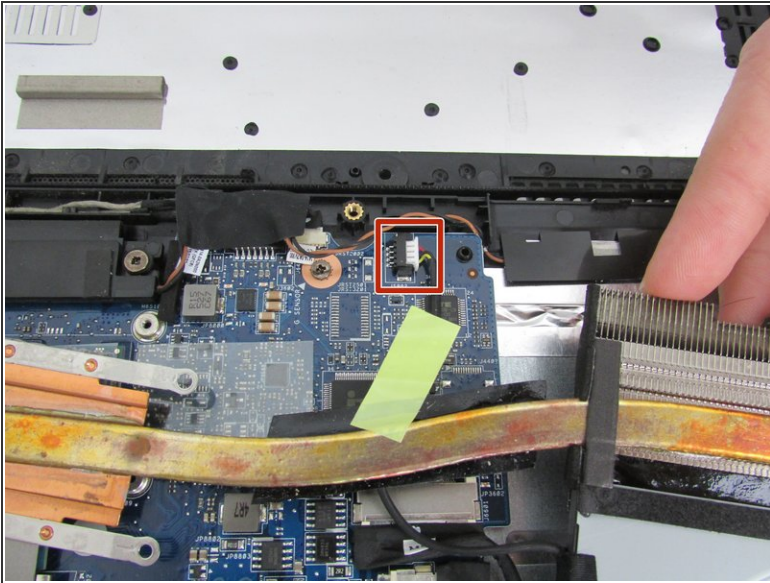
- Remove the four .5 mm screws that secure the heat sink using a Phillips #1 screwdriver.

### Step 4



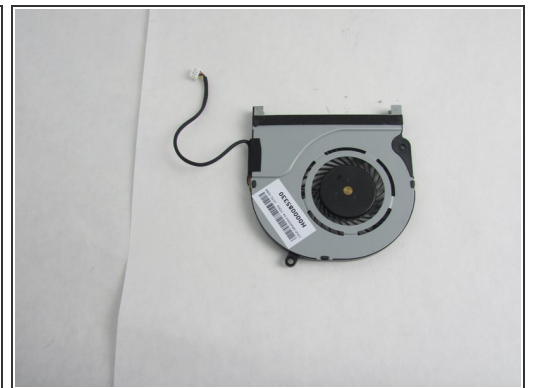
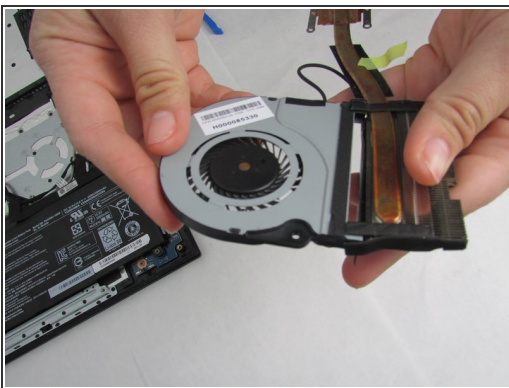
- Remove the two 1 mm screws that secure the cooling fan using a Phillips #1 screwdriver.

## Step 5



- Disconnect the fan cord from the harness.
- Remove the cooling fan and heat sink from the laptop.

## Step 6



- Carefully peel off the tape holding the heat sink onto the cooling fan.
  - ⚠ Peel carefully as the tape goes around all four sides.
- Remove the cooling fan from the heat sink.



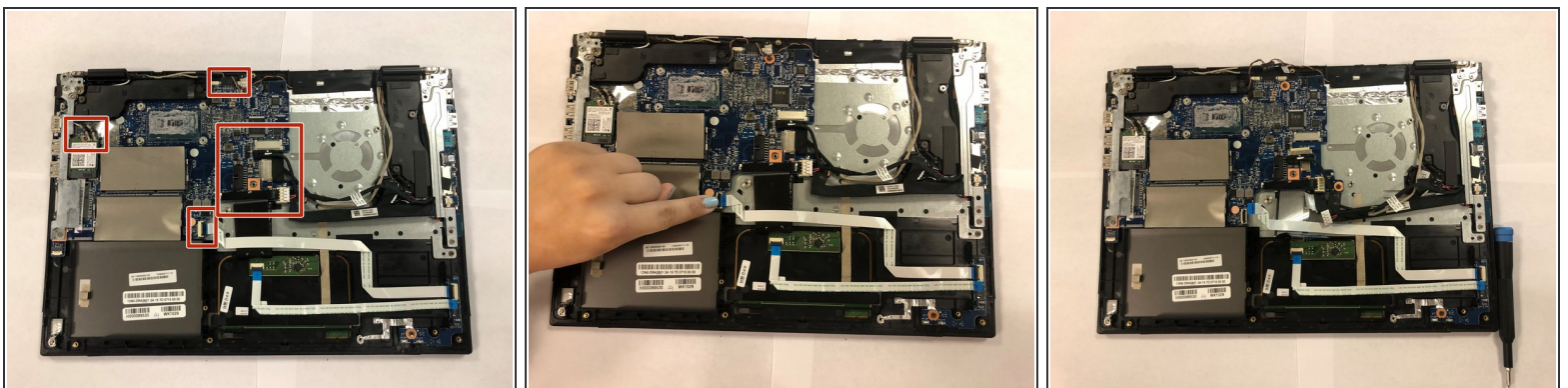
## Step 7 — Motherboard



- Unplug the connection to the battery.

⚠ Mark sure you are using the anti-static wrist strap for the duration of this replacement.

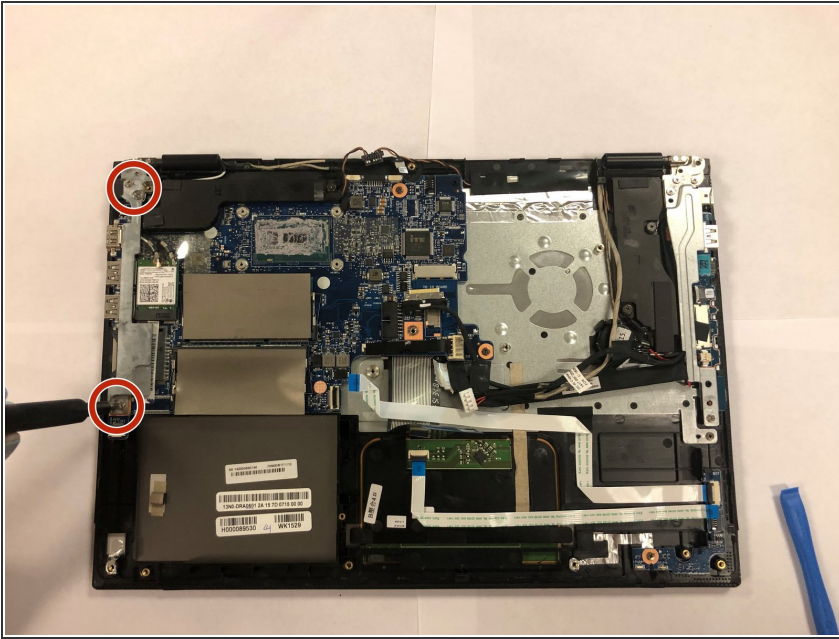
## Step 8



- Remove all remaining external wire harnesses from the circuit board.

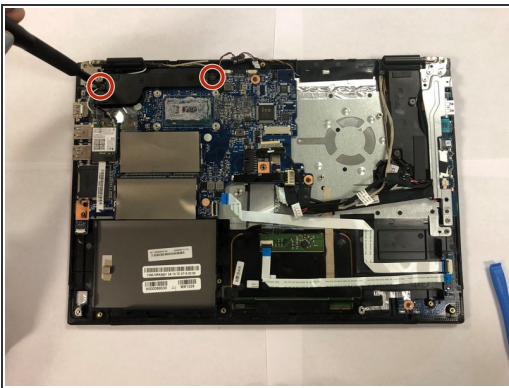
ⓘ It is recommended that you use labels or take pictures of the wires you remove to assist in the re-connection.

## Step 9



- Remove the three screws from the metal bracket on the left side of the circuit board using a Phillips #1 screwdriver.
- Remove the bracket.

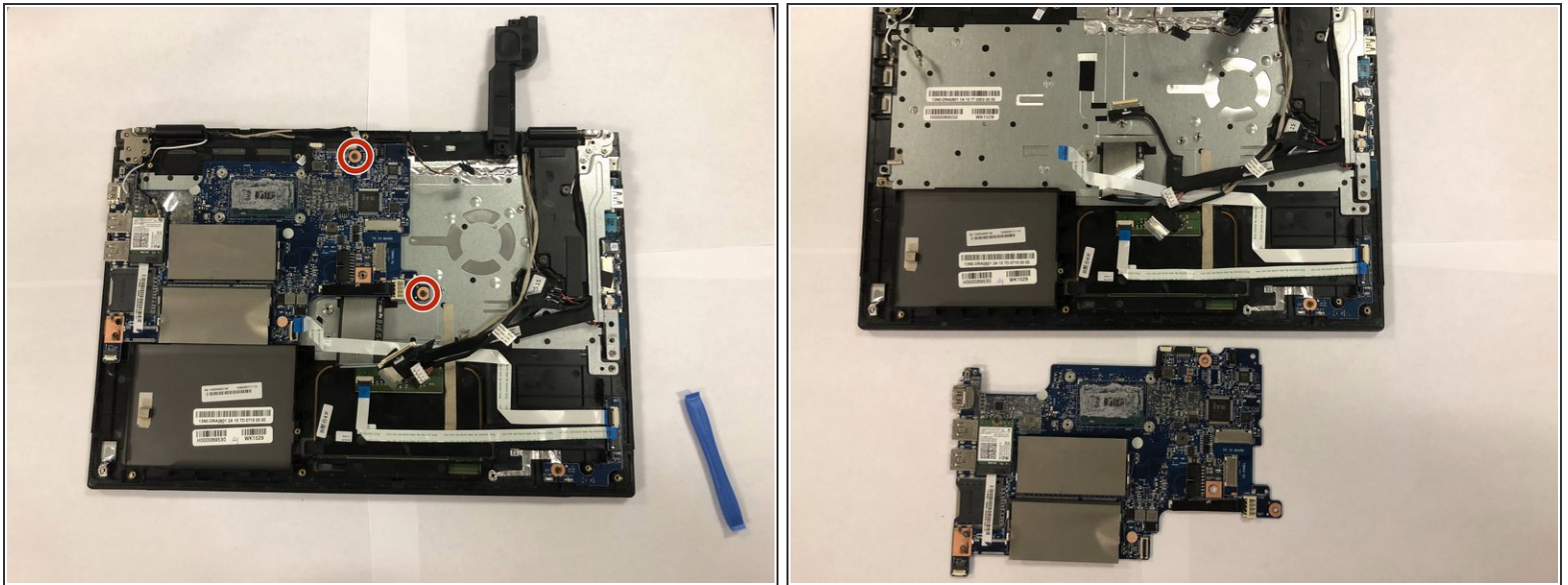
## Step 10



- Remove the two screws from the black plastic cover using a Phillips #1 screwdriver.
- Remove the black plastic cover.



## Step 11



- Using a Phillips #1 screwdriver, remove the remaining two screws holding the circuit board in place.
- Carefully remove the motherboard from the device.

To reassemble your device, follow these instructions in reverse order.